



ANNOUNCING THE BIRTH OF A DREAM HOME. Just in time to choose your own finishing touches. 5 bedrooms with master on main floor. 2 story living room. Library with wood paneling & fireplace. Family room off side of the kitchen. Finished walkout lower level with 2nd kitchen. \$1,590,000 (D-B-110SC0) 731401 Call 644-6700



THE ULTIMATE GIFT: PRIVACY! 1.85 acres in the City of Bloomfield Hills. Indoor basketball court, sauna, hot tub. Four furnaces. Over 6000 square feet. Four bedrooms. Birmingham schools. \$695,000 (ED-B-74C7A) 702265 Call 644-6700



SMALL SENSATION. Impeccably clean, meticulously maintained, fully upgraded prime lakefront Country French style home. Birmingham schools. Low maintenance brick, stone and cedar exterior. \$550,000 (ED-B-35PUT) 743037 Call 644-6700



LOVELY NEWER HOME IN TROY near Somerset. New Troy High and Bernia Elementary. Wonderful open floor plan. Large family room with fireplace. Den, four bedrooms, 2 1/2 baths. Neutral decor. Three car garage. Alarm and sprinkler. \$349,000 (ED-B-99PHO) 735055 Call 644-6700



CLARKSTON - WYNGATE. A beautiful new home, less than a year old, with all the amenities you want. 4 bedrooms, 2 1/2 baths, formal Living & Dining Rooms plus Family Room with fireplace, designer all-white kitchen with center island & Butler's Pantry, full basement, 3-car garage, professionally landscaped. \$359,900 Call 625-9300



NEW LAKEFRONT HOME in an exclusive area. 3 bedroom, 2 1/2 bath ranch with numerous amenities including Great Room with cathedral ceiling, fireplace, & down to lake, designer kitchen with cherry cabinets and Corian countertops, hardwood floors, Master Suite with walk-in closets & spacious walk-out. \$399,900 Call 625-9300



FAMILY COLONIAL with new furnace, roof, six panel doors, landscaping, brick patio. 5 bedrooms, 2 1/2 baths, family room with hardwood flooring and brick walled fireplace. Located on cul-de-sac. \$324,000 (ED-H-91COV) 741920 Call 646-1400



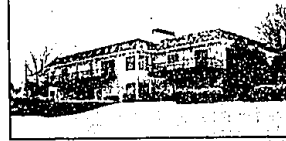
BLOOMFIELD - CLASSIC BRICK RANCH on 2.36 ACRES IN THE CITY. 4 bedrooms, 3 baths, Family Room, 2 fireplaces, formal dining room with bay window, kitchen with indoor grill, huge, sunny Florida Room. \$595,000 (EDH-052THE) 736024 Call 646-1400



BLOOMFIELD ADAMS WOODS TOWNHOUSE. Great neutral three bedroom unit with redone kitchen and baths. Finished lower level. Large brick courtyard entrance, private deck off back. New A/C & Hot water heater. \$238,000 (ED-H-63KOV) 738400 Call 646-1400



UPPER STRAITS LAKE - 103' OF WATERFRONT. Elegant Elongate Drive. Fabulous home on deadend street with southern exposure. Full walkout ranch renovated in 1996. 4 bedrooms, 3 baths. Exquisite landscaping. \$1,349,000 (ED-H-23ELM) 725309 Call 646-1400



BLOOMFIELD HILLS - PEACE & SERENITY. Beautiful ranch sits way back on 3 acres. 5 bedrooms, 3 full & 2 half baths, walkout leading to pool, lush grounds, and natural pond. \$849,000 (ED-H13MAP) 726420 Call 646-1400



CITY OF BLOOMFIELD HILLS - Beautiful lot over two acres. Living Room with marble fireplace, 3 bedrooms on upper level, family room w/parquet flooring, beamed ceiling and brick walled fireplace. 1st floor bedroom or den. \$825,000 (ED-H-21PEM) 741946 Call 646-1400



A HOME WITH DRAMATIC FLAIR. Extra large formal kitchen with additional sitting room off breakfast room. Living room with fireplace and vaulted ceiling. Warm comfortable family room w/built-in cabinets and fireplace. 4 bedrooms, three full baths. Situated on a cul de sac in Farmington Hills. \$319,000 (ED-B-01WN) 742402 Call 644-6700



LIVE IN BIRMINGHAM. Three bedrooms, 2 1/2 bath home on two lots with room to expand. Large kitchen and breakfast room. Living room with fireplace. Finished basement with rec room, lav, and office. \$269,500 (ED-B-09LAT) 727308 Call 644-6700



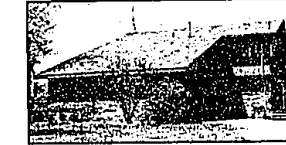
SOUGHT AFTER SHIRINE AREA. Large four bedroom family home in great neighborhood. Hardwood and/or parquet floors thru out. Huge screened porch overlooks private fenced yard. \$239,900 (ED-B-27HOU) 742153 Call 644-6700



SHIRINE AREA OF ROYAL OAK. Warning! This house is actually larger than it appears. Renovated for the 80's with 4th & 5th chams. Hardwood floors, fireplace, a new white kitchen, updated baths and mechanicals. Four bedrooms, two baths, dining room and family room. \$229,900 (ED-B-37RDS) 742937 Call 644-6700



IN-TOWN CHARMER with good curb appeal. Fireplace in living room. Two full baths, family room and bedroom on first floor. Breakfast room with bay window. Exposed hardwood floors on first floor. Large decks front and back. \$211,900 (ED-B-11HAZ) 716204 Call 644-6700



OSBOW LAKE FRONT! Sit back over 225' from Elizabeth Lake Rd! Over 1 acre sitting on all sports Osbow Lake! Vaulted ceiling w/2 story see-thru fireplace in great room & formal dining room. Remodeled island kitchen w/lots of storage, 1st floor master, 3 bdrms, 2 1/2 baths. \$299,900 (EDW-30EJL) 701978 Call 646-4000



ORCHARD LAKE FRONT ESTATE - Magnificent 2 acre estate. 13,000 SF of elegance. This custom contemporary features the best of everything - 2 master suites, 2 exceptional gourmet kitchens, 3 story rock garden & waterfall, 210' lake frontage, 3 for pool & 3 car garage. \$3,250,000 (EDW-30EJL) 701978 Call 626-4000



CASS LAKEFRONT! One of the most magnificent lots on Prestigious Erie Drive. Wooded private setting on hill top complete with boat house. Features hardwood & ceramic floors, cove ceilings, huge kitchen & nook, 2 1/2 baths, 3 large bedrooms, spa room, Birch Paver patio & garage. \$999,000 (EDW06ERI) 741136 Call 626-4000



GORGEOUS WILLIAMSBURG CAPE COD. Located on Prime 2.16 Ac w/spectacular View offering solitude. This charming home offers a wonderful large kitchen, 1st flr master bdrm w/huany marble bath, 4 fireplaces, hardwood & teak floors, & screened porch. living & dining rooms w/Crown moldings. \$525,000 (OE-R-01WAS) Call 656-6500



SHADOWS WOODS RANCH, with walk-out basement backs to forest for privacy. Dream family room w/vaulted ceiling, fireplace and wet bar. Master suite bath views woods from jettied rub. Spacious kitchen. \$257,700 (AR-R-37STE) 726650 Call 656-6500



VHAY LAKE FRONTAGE! Historic Quartermore Estate. English Tudor boasts terraces, private courtyard with aquatic terrarium, diversified floor plan, 4 bedrooms, 4 1/2 baths, leaded glass windows, panel doors and more. \$995,000 EDW-00LOH 727828 Call 626-4000



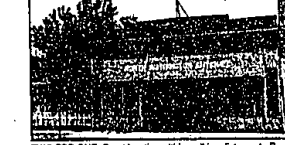
SPACIOUS. Beautiful transitional 2 story 3452 sq. ft. Features include 15x12 foyer with winding staircase, dental moldings, atrium off kitchen, vaulted ceilings, bridge on second floor. Master Suite with jacuzzi. \$339,000 (EDW-41GLE) 726384 Call 626-4000



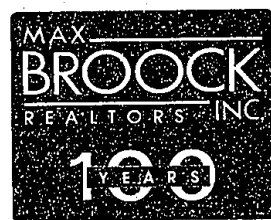
CONTEMPORARY IN FARMINGTON HILLS. 4 Bedrooms, 2 1/2 baths, family room, dining room and finished basement w/library. Large Master Suite w/vaulted ceiling. White kitchen cabinets, ceramic foyer, hallways and baths. \$304,900 (EDW-84HOR) 733725 Call 626-4000



HOME OWNERS DELIGHT - Spacious contemporary. 4000 sq ft in a natural setting. 4 bdrms, 2 full & 2 half baths, 3+ side entry garage. Skylights and wet bar in very large great room. Island kitchen. Master suite with jacuzzi. \$449,000 (EDW17CHE) 725828 Call 626-4000



TWO FOR ONE. Great location within walking distance to Royal Oak. Business opportunity or multi-family housing. Two buildings now used as a gift shop and antique store. \$184,900 (ED-B-29WAS) 742308 Call 644-6700



BIRMINGHAM
300 South Woodward
(248) 644-6700

BLOOMFIELD HILLS
1133 West Long Lake Road
(248) 646-1400

CLARKSTON
27 South Main
(248) 625-9300

ROCHESTER
850 West University Drive
(248) 656-6500

WEST BLOOMFIELD
7011 Orchard Lake Rd.
(248) 626-4000

CORPORATE/RELOCATION
74 West Long Lake Road
Bloomfield Hills
(248) 647-2200
1-800-356-2130

Results!
SINCE 1895



BLOOMFIELD HILLS - UPPER LONG LAKE FRONTAGE. 4 bedrooms, 3 1/2 baths, Family Room, Library, Euro-style neutral kitchen with island cooktop, new custom master bath, new cedar deck with hot tub, new brick patio. \$649,000 (ED-H-93LOH) 727548 Call 646-1400



ORCHARD LAKE - 370 FEET OF ORCHARD LAKE & DOW WATERFRONT. Contemporary with 4 bedrooms, 4 1/2 baths, Family Room, custom built deck house. Three acres of woods & water. Canal access to Cass Lake. \$599,000 (ED-H-80COM) 704458 Call 646-1400



COMMERCE TWP. - LOWER STRAITS LAKEFRONT. Soft contemporary with sunset views, professional landscaping, tiered decking, boulder sea wall, sandy beach, and finished lower level. \$569,000 (ED-H-04LAK) 732383 Call 646-1400



SOUTHFIELD - GREAT 4 BEDROOM COLONIAL. 4 bedrooms, 2 1/2 baths, Family Room, master suite with jet tub. Updates include kitchen cabinets, countertop, appliances, ceramic tile in foyer. \$139,900 (ED-32MAR) 741501 Call 646-1400



BLOOMFIELD - TOBOCAN DESIGNER'S CONDO. Spacious open floor plan. Skylights in kitchen and bath, covered balcony off great room. Two bedrooms, or one bedroom and den. Small quiet complex. \$119,900 (H-41MAP) 727430 Call 646-1400



ADORABLE WITH UPDATES. Mostly renovated Berkley ranch with hardwood floors. Possible two additional bedrooms in basement. Two bedrooms, two baths. \$95,000 (ED-B-60CUM) 736942 Call 644-6700