

MARKET

http://www.realestate.com

from

Our
68thReal
Estate
One, Inc.

and growing faster than ever

The Real Estate One Family of Companies
Bridges & Morrison • Johnson & Johnson • Ralph & Ralph

Real Estate One

Is ranked #1 in Michigan by

- National Real Estate and Real Estate Magazine
- Real Trends
- Chain's Detroit Business
- The Real Estate Professional



BLOOMFIELD

PRESTIGIOUS ISLAND LAKE 149' frontage, elevated wood ed setting with southern exposure. Spectacular views, charming older home. Renovate to your taste. Great investment potential. Nestled among multi-million dollar homes. \$1,250,000 (7236054) 248-644-4700



BLOOMFIELD HILLS

OLD WORLD CHARM & CRAFTSMANSHIP Best describes this original Tudor, secluded on heavily treed 1/2 acre lot on a private road. Finished walk-out with our own quarters. \$749,900 (740805) 248-644-4700



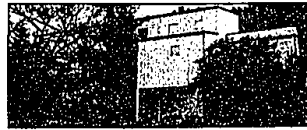
BLOOMFIELD

BLOOMFIELD HILLS SCHOOLS and mailing address. Great room, family room, library, 4 bedrooms with their own baths, 3 car garage, complete walk-out with in-law/mid quarters. \$599,000 (737653) 248-644-4700



BLOOMFIELD HILLS

SHARP RANCH Picturesque hilltop setting. Featuring skylights, updated baths and kitchen, in ground pool, fabulous master with walk-in closet, over 3,000 square feet on an acre-plus lot. \$499,990 (724432A) 248-644-4700



CLARKSTON

DYNAMIC ULTRA-CONTEMPORARY on a breathtaking wooded lot. Home boasts an artistic flair and looks onto gorgeous in ground pool. Four bedrooms, 4 full and one half bath. Private neighborhood beach. \$450,000 (703DEE) 248-652-6500



ORCHARD LAKE

SPECTACULAR TUDOR on incredible park like lot located on private cul-de-sac. Almost totally redone with custom kitchen, Great room with stone fireplace, hardwood floors and 2 story foyer. \$439,900 (PINE LA) 248-651-1900

Rank of company	
Real Estate One	10,172
Century 21 Town & Country	7122
Westside Better Homes & Gardens	5829
Coldwell Banker Schweitzer	5617
Century 21 Associates	5500
Greenridge Realty, Inc.	5030
Coldwell Banker Schmidt	3818
Prudential Great Lakes	2442
Century 21 Today	2328
Prudential Hubbell	1784
Preferred Carlson Realtors	1689
Edward Surovell	1594
B.F. Chamberlain	1551
Robert Garrow & Associates	1435
Charles Reinhart	1421
RE/MAX Suburban, Inc.	1401
Jack Christenson, Inc.	1294
RE/MAX East, Inc.	1278

National ranking of Michigan Real Estate Brokers as listed in Real Trends Magazine, April 1997.



BIRMINGHAM

BIRMINGHAM CHARMER Great family home, over 2,000 square feet not including finished lower level. Rare 2 car attached garage. Master suite. \$374,900 (712176B) 248-644-4700



BLOOMFIELD HILLS

COLONIAL 5 bedrooms, 3 baths, 20 x 40 in ground sunlit pool, oak kitchen, 2 fireplaces, hardwood floors, finished basement, workshop, possible 6th bedroom or office. Birmingham schools, lake privileges, home/pool warrant. \$349,900 (707042A) 248-644-4700



FARMINGTON HILLS

ONE OF A KIND Dramatic high ceilings greet you at your entrance to this custom one of a kind in Stratmore sub. Exceptionally large finished lower level. Located on cul-de-sac. \$339,900 (ENP) 248-651-1900



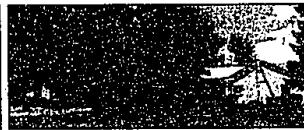
WEST BLOOMFIELD

OPEN SUNDAY 2-4, 3854 VALLEYVIEW LANE. Spacious and special dramatic contemporary interior. Stunning updates featuring all-white island kitchen, newer vinyl floor, roof, granite pool, Bloomfield Hills schools! \$334,900 (WAVI) 248-651-1900



ROCHESTER HILLS

PERFECT HOME for the buyer who appreciates quality. Amenities include oak floors, whirlpool tub, gourmet kitchen, bridge overlooking 2-story foyer and high ceilings in family room. \$320,000 (WHI136) 248-652-7500



BLOOMFIELD

ON ALMOST 1 ACRE of spectacular grounds. Ranch has many recent improvements, 3 bedrooms, 3 1/2 baths. White island kitchen, hardwood floors & finished basement. Lake privileges on Meadowlake & Birmingham schools. \$345,000 (WHY) 248-651-1900



FARMINGTON HILLS

PEBBLEBROOK ESTATES Immaculate 4 bedroom ranch on an acre lot backing to stream & woods. 3 bedrooms plus library. Finished basement. Fabulous house! Fabulous setting! \$279,900 (HRN) 248-641-2900



LAKE ORION

MANY "BAMBI" SIGHTINGS! from the rear of this 2,700 square foot home. Soft contemporary with vaulted ceilings and unique windows. Neutral tones throughout. \$274,500 (733901B) 248-644-4700



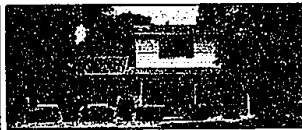
FARMINGTON HILLS

NATURE LOVERS DREAM. Contemporary walk-out ranch nestled amongst the pines on a 3 acre pond. Features cathedral ceilings, skylites, 2 fireplaces, 1st floor laundry, 5 bedrooms & 4 1/2 baths. \$269,900 (HIG) 248-651-1900



WEST BLOOMFIELD

EXQUISITE RANCH on spectacular 1/2 acre lot. Totally updated with 3 bedrooms, 2 baths, light kitchen with 2-way fireplace opens to huge skylight family room. West Bloomfield schools! \$219,900 (TAM) 248-651-1900



WEST BLOOMFIELD

BEAUTIFUL FAMILY RANCH immaculate 4 bedroom beauty. Formal dining room, family room opens to large Florida room. Finished lower level. Gorgeous landscaping. Lake privileges. West Bloomfield schools. \$219,900 (GRE) 248-651-1900



TROY

FOR THE VALUE SEEKER! Spacious 3 bedroom, 2 1/2 bath 2-story with treed lot, wood floors in library, foyer and kitchen. Newer furnace, professionally landscaped. Best price in sub! \$214,800 (69FOR) 248-952-5590



ROCHESTER HILLS

POOL - 2 story with traditional floor plan. 1st floor laundry - 4 bedrooms & 2 1/2 baths. Hardwood floors in upper level, newer central air, furnace & water heater. Circular drive. \$211,900 (SANG7) 248-652-5000



WASHINGTON

PICTURESQUE DOUBLE-WING COLONIAL backing to Story Creek Nature Center. On a premium lot. Outstanding floor plan with distinctive family room enriched by covey natural fireplace. \$209,900 (G16SPR) 248-652-6500



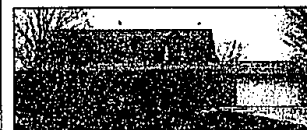
MILFORD

VILLAGE COLONIAL RANCH 2,200 square foot home is spacious island Foyer, pickled cabinetry, 3 bedrooms, 2 1/2 baths, 24'x12' deck, central air. Close to city conveniences. \$208,911 (14282) 248-684-1065



FENTON

COLONIAL BUILT IN 1993. 4 bedrooms, living room, family room concept with open floor plan. Great master suite. White kitchen with island, 1st floor laundry, fireplace, deck. Full basement. \$199,900 (QUA163) 248-652-6500



SOUTHFIELD

ENJOY SUMMER on large front porch with view of woods from rear deck. Almost 1/2 acre on private road. Oak kitchen, first floor laundry, bonus room on second floor. \$189,900 (ORM2) 248-477-1111



FARMINGTON HILLS

CALLAWAY GARDENS MIGHT COMPARE to the beauty of this home's backyard! Rolling lawn, ravine lot backs to wooded common area. Topped off with a gorgeous colonial with many custom features. \$194,000 (H29199) 248-281-0700



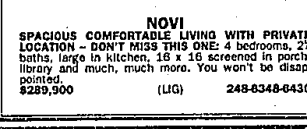
WEST BLOOMFIELD

DYNAMIC PEBBLE CREEK CONDO. Beautiful townhouse with 3 bedrooms, 3 1/2 baths & finished basement. Master suite has updated bath with jacuzzi tub. Private end unit. \$174,900 (BRID) 248-651-1900



SOUTHFIELD

FRAME THIS ADDRESS! Beautiful 4 bedroom Cape Cod. Home it and it's there. 3 baths, 3 car garage, 3 fireplaces, family room, dining room, deck, alarm, charm, personality and updated. Don't wait. \$168,850 (172MEL) 248-659-2300



NOVI

SPACIOUS COMFORTABLE LIVING WITH PRIVATE LOCATION - DON'T MISS THIS ONE! 4 bedrooms, 2 1/2 baths, large in kitchen, 16 x 16 screened in porch, library and much, much more. You won't be disappointed. \$289,900 (LIG) 248-6348-6430



TROY

POPULAR RAINBOW 4 bedroom quad, 2 full baths, family room with fireplace & blower insert, living room updated, kitchen, new furnace & roof, air conditioning. Many amenities. Move-in condition! \$277,900 (3700XL) 248-952-8500



ROCHESTER HILLS

FOUR BEDROOM RANCH with many additions including great room with wood fireplace, 1 car attached garage. Living room, basement and an extra, extra deep lot. \$174,900 (265E) 248-648-9100



LATHRUP VILLAGE

HONEY STOP THE CAR! The only new construction in Lathrup Village under \$200,000. Call about this all brick, three bedroom home to be built. Bargain priced at. \$169,900 (726652B) 248-644-4700

"Real Estate One Continued on Back of this Section"