

AUTOMOTIVE

SUNDAY, AUGUST 3, 1997 • PAGE 1 SECTION J

Classified Ad Index

CLASSIFICATION	NUMBER
■ Announcements	600-630
■ Merchandise	700-754
■ Autos/RVs	800-870
■ Autos By Make	834-874
■ Boats, Motors	882
■ Motor Cycles, Mini Bikes	897
■ Trucks	922
■ Vans	928

Our complete index can be found
in the Real Estate section

TO PLACE AN AD

DIAL CLASSIFIED DIRECT
Wayne County.....(313) 591-0900
Oakland County.....(810) 644-1070
North Oakland County.....(810) 475-4596
Rochester/Rochester Hills.....(810) 852-3222
Fax Your Ad.....(313) 953-2232

Walk-In Office Hours:
Monday - Friday, 8:30 am-5 pm
After Hours: Use our 24-Hour
Voice Mail System
(313) 591-0900

Deadlines: For placing, cancelling or
correcting of line ads.

Publication DayDeadline
SUNDAY REAL ESTATE5:00 P.M. THU.
SUNDAY5:30 P.M. FRI.
THURSDAY8:00 P.M. TUE.

You can view the Observer &
Eccentric Automotive Classifieds
on the web at:

<http://oeonline.com>

To order Observer & Eccentric On-Line! call 313-953-2266 and get the software that will open the doors to the web.

Mazda B4000 pickup pulls out all the stops

CARport



BY ANNE FRACASSA
AVANT NEWSFEATURES

I was able to pull every single bush out of my yard in a little less than two hours with the 1997 Mazda B4000 SE-5.

We counted them all afterwards. Pulled out, roots and all, were 22 mostly large shrubs and bushes. My two helpers saw me tear up the grass real good, but the truck pulled out all that overgrown foliage with little effort. One bush was particularly stubborn (it had been there more than 20 years, but it came out).

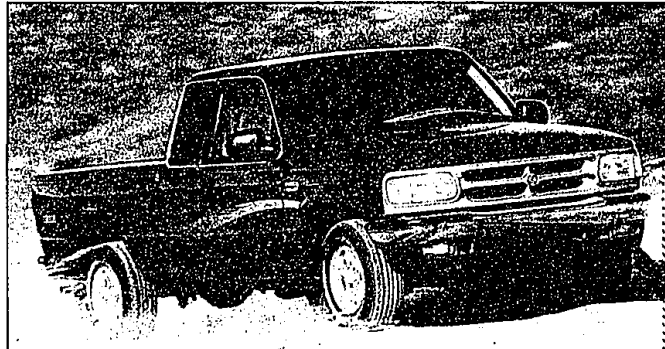
And you know what? I only put it in 4-wheel-drive once. Most of the bushes came out in 2-wheel-drive low.

This is one strong little truck. Kissin' cousin to the Ford Ranger, the Mazda B4000 is powered by a 160-horsepower 4-cyl V6 mated to a 5-speed drive transmission. The truck tested was the B4000 SE-5 Cab Plus (extended cab). This is a strong engine that can haul you know what. In fact, the engine is one of the largest and most powerful engines in its class.

It's got 220 pound-feet of torque. That means it's capable of towing up to 5,900 pounds. Or a few bushes around the yard.

After ripping up the yard, we took three trips to the city dump to dispose of all that brush we loaded onto the B4000's flatbed. That's what I call curb-to-curb service.

With the windows down and after a cold start, the B4000 roars to life and is quite noisy at first. It didn't bother me too much; trucks are supposed to



If you're considering a really strong truck that can take care of your trailering needs, this Mazda B4000 is an excellent option.

sound throaty.

But the most surprising thing about the B4000 is that it's a true truck in appearance, ride, handling and road feel, but it's so comfortable and livable on the inside.

Face it. A good majority of you commute pretty long distances to work or play, so in fact, you do live in your vehicle. I could live in this one.

Styling is superb on the SE-5. It's really sporty and features chrome front and rear bumpers (finally, a return to chrome) and bright door and tailgate handles. Pinstriping and accent striping is really well done, making it even sportier looking.

In the front, there is room for three passengers. In the rear, you can squeeze another two in the fold-down jumpseats. There's a lot of room back there without the passengers to hold a multitude of toys for your boating excursion. One unique feature is a cargo area cover for the rear to hide all your important belongings.

It's a treat to let the kids sit in the front seat, and I could let them in the B4000 because it comes standard with a key-operated deactivation switch on every truck outfitted with dual airbags.

It's not that important for me any longer, but it is for anyone who has to drive around a child in a rear-facing child safety seat. You can turn off the airbag with just a turn of the key just below the center of the instrument panel.

Another wonderful feature is the "shift-on-the-fly" 4-wheel drive. A small round switch, located on the right side of the steering wheel, can activate 4-wheel-drive high, low or back to 2-wheel-drive with just a flick of the wrist. The front hubs are locked automatically. Very convenient.

Just as an aside, the B-Series trucks that Mazda offers are B2300 and B4000. The B2300 is powered by a 112-horsepower 2.3-liter four-cylinder engine.

See Mazda B Series Truck, Next Page

The Summer Clearance Is On At CRESTWOOD DODGE Hurry! ONE WEEK ONLY!



1997 DODGE AVENGER

- Air Conditioning
- Automatic
- Power Windows
- Power Locks
- Tilt Wheel
- Cruise
- Cassette
- Alloy wheels

36 MO. LEASE	\$265* MO.	\$1800 DUE ON DELIVERY
	\$296* MO.	\$800 DUE ON DELIVERY

1997 DODGE INTREPID SPORT

- Air Conditioning
- Tilt Wheel
- Alloy Wheels
- 3.5 Engine
- Power Windows
- Cruise
- Cassette
- Power Locks
- Power Mirrors
- Power Seat

36 MO. LEASE	\$297* MO.	\$1500 DUE ON DELIVERY
	\$343* MO.	\$0 DUE ON DELIVERY-SKIN & DRIVE!



1997 DODGE CARAVAN

- Running Boards
- Driver Side Sliding Door
- Sunscreen
- 3.0 V6
- Air Conditioning
- Cruise
- Full Spare
- Roar Defrost
- Tilt Wheel

36 MO. LEASE	\$269* MO.	\$1900 DUE ON DELIVERY
	\$299* MO.	\$999 DUE ON DELIVERY



1997 DODGE STRATUS

- Power Mirrors
- Rear Defrost
- Floor Mats
- Air Conditioning
- Automatic
- Power Windows
- Power Locks
- Tilt Wheel
- Cruise

GENERAL PUBLIC	\$255* MO.	\$1800 DUE ON DELIVERY
36 MO. LEASE	\$285* MO.	\$800 DUE ON DELIVERY

1997 RAM PICKUP LARAMIE SLT

- Automatic
- Air Conditioning
- Power Windows
- Power Locks
- Power Mirrors
- Cruise
- Tilt Wheel
- Cassette
- Aluminum Wheels
- Floor Mats

GENERAL PUBLIC	\$249* MO.	\$1500 DUE ON DELIVERY
36 MO. LEASE	\$269* MO.	\$775 DUE ON DELIVERY
EMPLOYEE	\$219* MO.	\$249* MO.



1997 TIARA CONVERSION VAN

- Air Conditioning
- Power Windows
- Power Locks
- Aluminum Wheels
- Cassette
- 4 Captain Chairs
- Tilt Wheel
- Sofa Bed
- Cruise
- Running Boards

GENERAL PUBLIC	\$269* MO.	\$1900 DUE ON DELIVERY
36 MO. LEASE	\$299* MO.	\$999 DUE ON DELIVERY
EMPLOYEE	\$239* MO.	\$269* MO.



'97 Dodge 1500 4X4, Fiberglass Tonnau Cover	\$23,995
'96 Dodge Grand Caravan ES, green & loaded	\$20,995
'95 Dodge 1500 C/C SLT, real clean	\$18,995
'95 Dodge Neon Sport	\$9,995
'95 Dodge Stratus ES, moon roof, only 10,000 miles	\$14,995
'95 Dodge Intrepid, moon roof, lease turn in	\$14,995
'95 Dodge Intrepid, low miles	\$14,995
'96 Dodge 1500, 4x4, with fiberglass top	\$19,995
'94 Dodge 1500 4X4 SLT only 11,000 miles	\$18,995

USED CAR SPECIALS

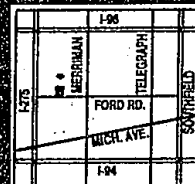
'94 Ford Explorer, 4x4, power everything	\$17,995
'95 Dodge Neon, auto., air	\$9,995
'96 Dodge B-250, work van, air, auto	\$15,995
'95 Dodge 1500, regular cab, 4x4	\$18,995
'96 Plymouth Grand Caravan, real nice	\$19,995

'94 Dodge Conversion Van, low miles & clean	\$12,995
'96 Chrysler Sebring convert., summer ready	\$17,995
'94 Chevy Club Cab, nicely equipped	\$16,995
'96 Dodge Stratus, loaded	\$13,995
'95 Plymouth Grand Caravan Sport, nice	\$16,995
'93 Pontiac Grand Am, power & clean	\$8,995
'95 Dodge 1500 SLT Clubcab, loaded	\$18,995
'94 Jeep Cherokee, 4x4, real clean	\$14,995
'95 Chrysler LHS, leather, roof	\$15,995



CRESTWOOD

D O D G E



32850 FORD ROAD
GARDEN CITY
421-5700

TOLL FREE 1-888-MY-DODGE
(693-6343)

Open Mon. & Thurs. 9-9
Tues., Wed., Fri. 9-6