

# DOG DAY DEALS

## 1400 Cars • Trucks • Vans Available

### ECLIPSE VAN CONVERSION SALE! THE BEST VAN AT THE BEST PRICE!

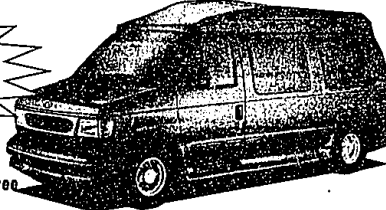
The very best in quality isn't just a marketing slogan, it's a commitment from all of us at Eclipse Conversions.

Eclipse Conversions is proud to have received these awards from Ford Motor Company: The Quality Excellence Award for exceptional quality and workmanship.

The Best In Class Award nine out of ten owners surveyed said they would definitely buy another Eclipse Conversion Van. The Top 10 Award for being one of Ford Motor Company's top volume manufacturer of conversion vans in the country.

Winner of the  
Ford Motor Company's  
Prestigious  
Quality Excellence  
Award

**YOU CAN COMBINE FACTORY  
REBATES UP TO \$2500 with free  
equipment from Eclipse and huge  
Bill Brown Ford discounts to offer you our lowest price and lowest lease payments.**



#### 1997 ESCORT LX 4 DOOR

317 Package, air conditioning  
five speed, cassette  
rear defrost.  
Stk. #73479



Was \$13,520

**\$10,899\***

YOU PAY

24 Month Lease	10% Down \$1089	Per Month \$169**
	0 Down	\$235**

#### 1997 TAURUS

Air, defrost, power windows.  
Was \$18,545



**\$14,299\***

YOU PAY

24 Month Lease	10% Down \$1499	Per Month \$219**
	0 Down	\$289**

#### 1997 F150 XLT

5-speed, air, power windows &  
locks, cassette, tilt, speed  
control, aluminum wheels.  
Stk. #73062



Was \$20,345

**\$15,375\***

YOU PAY

24 Month Lease	10% Down \$1537	Per Month \$179**
	0 Down	\$249**

#### '97 EXPLORER PREMIUM SPORT 4x4

934B pkg., premium sports pkg., chrome  
wheels, CD player, stop bar, auto-  
cruise, tilt, power  
windows/locks & seat.  
Was \$29,600



Four at this price.

**\$24,790\***

YOU PAY

24 Month Lease	10% Down \$2429	Per Month \$291**
	0 Down	\$399**

#### All New 1998 WINDSTAR

Family Security Package  
473A pkg., big door, top slide seat, hi cap air,  
privacy glass, power windows &  
locks, speed, tilt, cassette, 25 gal.  
tank, luggage rack & more.  
Stock #80615  
Was \$26,812



**\$21,140\***

YOU PAY

24 Month Lease	10% Down \$2114	Per Month \$294**
	0 Down	\$388**

#### 1997 RANGER XLT

5 speed, stereo,  
sliding rear window,  
P225OWL.



Was \$14,035

2 at this price

**\$9,989\***

YOU PAY

24 Month Lease	10% Down \$999	Per Month \$149**
	0 Down	\$188**

#### 1997 PROBE

Automatic, 253 Pkg.,  
spoiler, aluminum  
wheels, tilt, speed  
control, defrost,  
cassette, rear washer  
wiper, floor mats.

Stk. #70793

Was \$18,064

You Pay

**\$14,268\***

#### 1997 PROBE GTS

Black, automatic  
transmission, GTS Sports  
Group, ABS brakes, tilt  
wheel, speed, sunroof,  
stereo CD, power seat,  
power windows,  
power locks.

Stk. #71226

Was \$23,910

You Pay

**\$18,695\***

#### SPECIAL PURCHASE 6 ASPIRES

PRICED BELOW  
"A" PLAN

2 DOORS

③ 5 SPEED, DEFROST, STEREO

'6695'

② AIR, 5 SPEED, DEFROST, CASSETTE

'7695'

① AUTO, AIR, DEFROST, CASSETTE

'8295'

GAS  
SAVER

#### 1997 THUNDERBIRD

Chrome aluminum  
wheels, deck lid  
spoiler, trac lok axle,  
power windows and  
locks, cruise,  
tilt, defrost.  
Stk. #72420

Was \$19,730

You Pay

**\$16,595\***

#### 1997 AEROSTAR EXTENDED XLT

Cruise control,  
tilt wheel,  
defrost,  
stereo cassette,  
privacy glass.

Stk. #70923

Was \$22,320

You Pay

**\$17,995\***

#### 1997 CROWN VIC LX

113 package, cruise,  
tilt, power windows  
and locks, cassette,  
spare, wsw,  
aluminum wheels,  
white.

Stk. #70782

Was \$25,600

You Pay

**\$19,962\***

**THANK YOU!**  
For Making us Metro  
Detroit's #1 FORD DEALER

#1 Sales 1995  
#1 Sales 1996  
#1 Sales 1997 YTD

# BILL BROWN

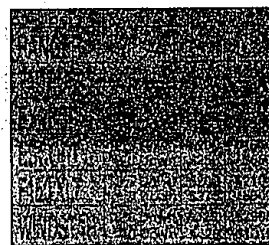


**313-421-7000**

Out of Town Call Toll Free 1-800-878-2658  
32222 PLYMOUTH ROAD • LIVONIA  
— Your Quality Commitment Dealer —

**LARGEST INVENTORY!**  
Highest Volume Used Car Lot!

**A-PLANNERS**  
We want your trade &  
we'll pay more for it!



\*Sale price includes assignment of any rebates and incentives to BDF. Don't forget to add tax, title and destination charges. All prior sales and adv. excluded. Includes assignment of rebates. \*\*Lease with down payment as shown, 15¢ per mile in excess of 12,000 miles per year. Lessee has no obligation to purchase car at lease end, but may arrange to purchase at a price to be negotiated with BILL BROWN FORD at lease inception. Subject to credit approval. Lessee is responsible for excess wear and tear. Payments do not include monthly use tax to figure total payments, multiply listed number of payments. Pictures displayed may not represent actual sale vehicles. Destination included with lease payments. Sale ends August 6, 1997.