

Common sense measures for safe use of pesticides

By DR. LEWIS NELSON
NEW YORK U. MEDICAL CENTER

AP - A lush green lawn can be a homeowner's pride and joy. But keeping a pest-free lawn may require using potentially toxic chemicals that must be handled carefully to prevent accidental poisonings.

The most common toxic chemicals used to kill unwanted pests are known as organophosphates and carbamates.

These chemicals are often available in hardware stores, supermarkets and plant stores. But just because organophosphates are available in familiar

■ Never smoke, eat or drink while applying pesticides. These chemicals can get into the air and land on a drink, sandwich or cigarette and be ingested or inhaled.

settings does not mean they are safe.

When used improperly, these chemicals can be hazardous to pets and people - especially children.

Here are some protective measures to take when using these materials.

■ Safety begins in the store. Before you buy an insecticide, read the label carefully. Bear in mind that many of the chemicals are packaged as concentrates that are meant to be diluted before being used in sprayers.

■ Consider the weather conditions before spraying your lawn. Do not spray on a windy day. A gust of wind can blow the chemicals back into your face where they can be inhaled.

■ Avoid spraying on a hot day since high temperatures can cause these chemicals to vaporize into the air.

■ Avoid contact with skin by wearing protective clothing: long pants, long-sleeve shirts, closed shoes, a hat, gloves and eyeglasses. If your skin comes in contact with the material, stop spraying immediately, wash the area thoroughly and change your clothes. In any case, you should change and launder your clothes after spraying pesticides.

■ Never smoke, eat or drink while applying these chemicals. They can get into the air and land on a drink, sandwich or cigarette and be ingested or inhaled.

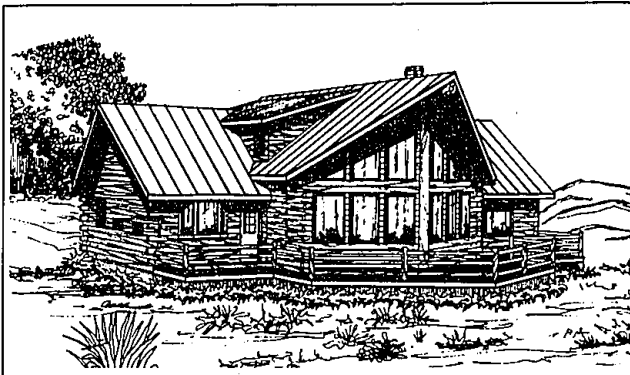
■ Do not spray around children or pets and keep them off a sprayed lawn for several days. Young children are especially prone to dangerous exposure because they breathe faster than adults and are likely to play or lie on the grass.

■ Many people use "organic" insecticides in the mistaken belief that chemicals termed "natural" are safer than organophosphates. But some of the natural chemicals such as nicotine, can be just as toxic as organophosphates. It is still vital to take precautionary measures when using them.

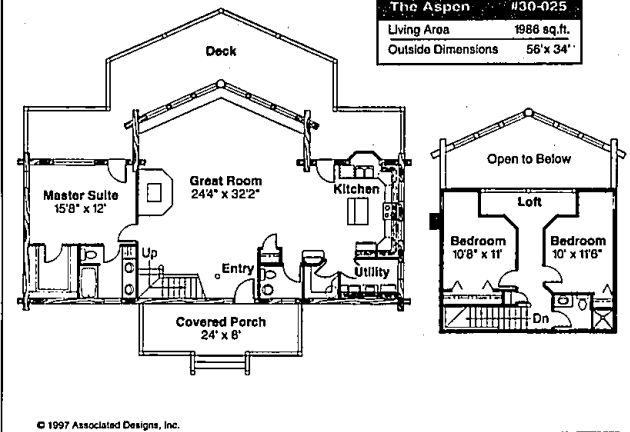
■ Those who want to use a less toxic form of lawn insecticide may select one that contains derivatives of chrysanthemums known as pyrethrins and pyrethroids. These can, however, cause allergic reactions in those who become sensitized, and should be handled with the same caution as other pesticides.

■ Finally, be sure to store all insecticides in their original containers and keep them in a cool dry area out of reach of children. And if you have any questions, contact the manufacturer, nearby poison-control center or local nursery.

Dr. Lewis Nelson is an assistant professor of clinical surgery (Emergency Medicine) at New York University School of Medicine.



The Aspen #30-025
Living Area 1986 sq.ft.
Outside Dimensions 56' x 34'



Vacation home built with logs

Rustic logs frame the Aspen, a spacious vacation retreat designed to maximize appreciation of the outdoors. Windows, stacked two high, open most of the rear elevation to the view, and a wide deck spans that entire side of the home. Rain and snow slides easily off the long-lasting metal roof.

Log homes endure. Some built early in our country's history are still in use, with updated interiors.

This one has a bright great room at center, warmed by a free-standing wood stove. The ceiling at the rear rises to two stories high near the windows. Two good-sized bedrooms and a bathroom are on the second floor, along with a wide, railed loft

that overlooks the great room.

You could actually live in this house year-round. It boasts close to 2,000 square feet of interior living area, more than many homes have, and the roomy deck adds hundreds more square feet of living area when days are warm. It even has three bathrooms, one upstairs and two on the main floor.

The kitchen has plenty of cupboard and counter space, along with a work island and a large walk-in pantry. The length of work island that faces the great room serves as an eating and conversation bar. Potted plants flourish in the small window bay in front of the sink, and a door to the deck makes it easy to move meals outside.

Utilities are nearby, in a full-sized laundry room complete with overhead cabinets and a deep sink.

The Aspen's master suite has a full-size walk-in closet, and private bathroom with dual vanity, tub, and linen storage.

For a review plan, including scaled floor plans, elevations, section and artist's conception, send \$15 to Associated Designs, 1100 Jacobs Dr., Eugene, Ore. 97402. Please specify the Aspen 30-025 and include a return address when ordering. A catalog featuring over 170 home plans is available for \$12. For more information call (800) 634-0123.

Making it cool

Get the most out of your air conditioner

(NAPS)—How can you get the most reliable operation and comfort from your central air conditioner? Don't worry, help is a phone call away.

Just ask your local cooling dealer. Here are a few questions many people have asked, answered by Bryant Heating &

Cooling Systems dealers.

Q: How often should my home air conditioner be inspected?

A: Your home air conditioner system should be checked at least once each season by a local cooling dealer.

A cooling dealer can make sure your system works reliably and efficiently. You should ask your dealer about a seasonal service contract.

Q: Is there anything I should do before I call a dealer for service?

A: First, check the "disconnect" switches on both the indoor and outdoor units of your system. Make sure the circuit breakers are "ON" or that the fuses have not blown.

Make sure the furnace air filters are clean and that supply-air and return-air grilles inside your home aren't blocked by furniture or drapes.

Check the settings on your thermostat. For cooling, make sure the temperature is set below room temperature and the "System" switch is on the "COOL" or "AUTO" position.

Q: What simple steps can I take to keep my air conditioner in good shape?

A: Clean or replace the furnace's air filters once a month. A dirty filter will make your air conditioner work harder and affect its performance. When changing a filter, be sure to replace it with one that is the same size as the original.

If your system has a reusable filter that can be cleaned with water, make sure it's completely dry before you reinstall it.

CLARKSTON
Rise Above the Rest

BRIDGE LAKE BLUFFS
BRIDGE LAKE BLUFFS
BRIDGE LAKE BLUFFS

WILSON HOMES, INC.
BRIDGE LAKE BLUFFS, limited to just 38 spacious, 1-acre Country Estate homesites, has been thoughtfully arranged within 67 acres of natural countryside.

- Spectacular lake views
- Walk-out lots available
- Just minutes from I-75
- Clarkston schools

Home sites from \$50,000
Home packages from \$50,000

A KIRCO DEVELOPMENT

CLARKSTON
Discover BRIDGE VALLEY

Spectacular 1-1/2 acre homesites available to create your own custom country estate.

GARDALLA HOMES, INC.
Home packages may be purchased from \$50,000

J.E. HEMPHILL, INC.
Homesites may be purchased from \$123,000

BRIDGE VALLEY

Information Center (248) 620-6603
Open Wednesday, Sunday 10-4 or by appointment
Bridge Valley is located off Holcomb Rd. just northwest of the Village of Clarkston
Brokers Welcome A KIRCO Development

PHASE III NOW AVAILABLE

FARMINGTON HILLS - FINAL PHASE NOW SELLING

LIVE YOUR DREAM RIGHT NOW

Stop putting off your dreams for a new home and a better life, because right now you can have both, at a price you can afford. Choose from exciting attached or detached condominium styles with 7 unique floor plans. Best of all, at River Pines you'll enjoy a carefree condominium lifestyle. Get the home and the life you've been waiting for. Today.

CONDOMINIUM RESIDENCES FROM THE 170'S

RIVER PINES CONDOMINIUMS

Located at the intersection of 9 Mile and Drake Roads.
Open daily 1-6 p.m.
Weekends noon-6 p.m. (Closed Thurs.)
Call (810) 474-1060

IMMEDIATE OCCUPANCY!