

CALL COLDWELL BANKER SCHWEITZER REAL ESTATE

Bloomfield Hills • Farmington Hills/W. Bloomfield

<http://cbschweitzer.com>

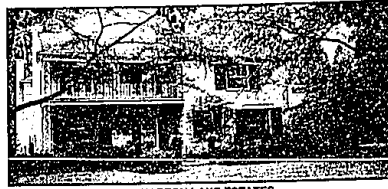
Birmingham • Royal Oak • Troy



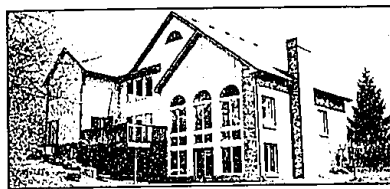
CASS LAKE PENINSULAR SITE
ORCHARD LAKE. Enjoy 127 feet of frontage on Cass Lake with additional 70 feet in protected bay with dock. This colonial with soft traditional features will capture you. Second floor rec. room or in-law quarters with full kitchen. \$1,099,000 (OEBS5WAR) 248-646-1800 • 28383



ACREAGE WITH A VIEW
BLOOMFIELD HILLS. 1.75 gorgeous acres. Architectural details include walls of windows and elevated ceilings. Super finished walk-out lower level, 5th bedroom and 4th bath in lower level along with recreation room, bar and dance floor! \$729,000 (OEBS4WIS) 248-642-2400 • 26093



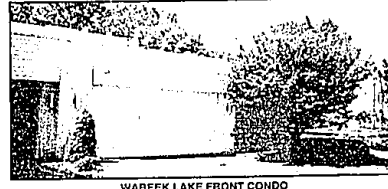
QUARTON LAKE ESTATES
BIRMINGHAM. The best location! Huge colonial in very exclusive sub. 5 bedrooms, 3 1/2 baths, updated kitchen, & approximately 3,310 square feet of living space. Professionally landscaped. Character abundant! \$658,000 (OEBS9SUF) 248-642-2400 • 26313



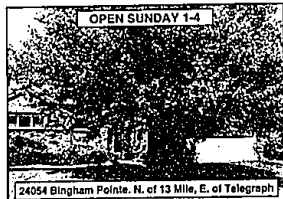
CONTEMPORARY
ORCHARD LAKE. with Upper Strata Lake privilege. Located on a one acre lot in Deer Run. Huge Great Room w/vaulted ceiling, wet bar, and hardwood floor. Custom white kitchen has a sitting area and hardwood floor. Family room with fireplace. \$629,900 (OEBS20BR) 248-646-1800 • 28503



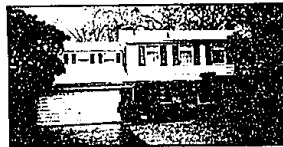
CHARMING TUDOR HOME
BIRMINGHAM. You'll appreciate being close to town in this three bedroom, 3 1/2 bath home. Updated kitchen opens to family room and, there are beautiful hardwood floors in the living and formal dining rooms. The spacious master suite offers a personal retreat with a sitting room, fireplace, balcony, and his and her bathrooms. \$495,000 (OEBS0BLAR) 248-646-1800 • 28033



WABEEK LAKE FRONT CONDO
BLOOMFIELD HILLS. Fabulous w/5 bedrooms and 3 1/2 baths, huge white kitchen. Contemporary thru-out. Extra galleried proceed low to sell! Priced at \$414,800. Call today! (OEBS17-ALE) 248-737-0000 • 23753



OPEN SUNDAY 1-4
24054 Bingham Pointe, N. of 13 Mile, E. of Telegraph
BINGHAM FARMS
COUNTRY-LIKE SETTING - Gorgeous newer townhouse with private back yard. This special condo offers great kitchen with all appliances, two fireplaces, and a grand master suite with balcony. Super value! \$254,500 248-642-2400 • 26313



MORE FOR LESS
BIRMINGHAM. Is what you will realize with this spacious colonial featuring 4 large bedrooms, family and living rooms, den, 2 fireplaces, hardwood floors, newer furnace, water heater and roof. \$289,900 (OEBS5WAK) 248-642-2400 • 26143



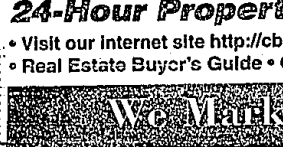
OPEN SUNDAY 1-4
101 Douglas, S. of Square Lake, E. of Woodward
FABULOUS UPDATED RANCH
BLOOMFIELD HILLS. Beautiful new kitchen with cherry cupboards, ceramic tile floor and counters. Three bedrooms, 2 baths, private yard with huge cedar deck and pool. Security system and many updates! \$209,900 248-646-1800 • 26243



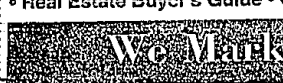
PRICED TO SELL
BLOOMFIELD HILLS. 2,035 sq. ft. 3 bedroom, 2 1/2 bath! Foyer with cathedral ceiling. Family room with fireplace and doorwall to sunken patio with rock garden. \$153,000 (OE48FOX) 248-670-3400 • 23253



FABULOUS NEW CONSTRUCTION
FARMINGTON HILLS. Over 2,000 sq. ft. of gorgeousness, cathedral ceilings, spacious island kitchen with loads of cabinets and counter space; master bath with double sinks, 2 story ceramic foyer. Priced at \$257,900 (OEBS24-SUS) 248-737-0000 • 30163



NEW CONSTRUCTION
MADISON HEIGHTS. Pick your own carpet colors in this new beautiful colonial with 3 bedrooms, 1 1/2 baths, 1200 square feet, and 2 car garage. \$125,500 (OEWS02KAL) 248-645-5800 • 37863



GORGEOUS BRICK TUDOR
PONTIAC. Located in popular Ottawa Hills, this immaculate and tastefully decorated home offers newer roof and kitchen and the potential for six bedrooms. Attached garage and w/extra large lot. A must see home. \$179,900 (OEBSH39ILL) 248-646-1800 • 28133



QUALITY CONSTRUCTION
TROY. Wonderful design is part of this new 2,400 sq. ft. multi-level home. This home has 4 bedrooms, 3 full baths, cathedral and vaulted ceilings, indirect lighting, hardwood floors in foyer and kitchen, 2nd floor laundry. \$239,900 (OEBS0EVA) 248-642-2400 • 28263



WHITE LAKE. 3 bedroom, 3 1/2 bath contemporary. Enjoy the view of this 1 acre wooded site. First floor master bedroom. Fireplace in Great room and eat-thru fireplace between kitchen and dining room \$370,000 (OEBS11TUR) 248-737-0000 • 29063

BEST PRICE FOR WEST BLOOMFIELD
WEST BLOOMFIELD. West Bloomfield schools, 4 bedrooms, 2 1/2 baths, ceramic tile in foyer and kitchen. Gourmet kitchen, huge breakfast nook w/ fireplace \$309,900 248-737-9000 (OEBS25ALD) • 30013

TRANQUIL SETTING
WEST BLOOMFIELD. On all-sports Pine Lake. Three bedrooms, 2 1/2 baths, family room w/natural fireplace, separate bar area, new roof in 1998. \$339,000 (OEBS23BIR) 248-646-1800 • 26343

YOU WANT BRICK??
SYLVAN LAKE. This four bedroom, two bath brick tudor has a two car garage. Pool and cabana with kitchen and half bath. Location in Wood Lawn sub offers special privileges at park located on Sylvan Lake. \$174,900 248-737-9000 (OEBS19LAK) • 29923

BEAUTIFUL COLONIAL
SOUTHFIELD. This beautiful center entry colonial. Entranceway is 15x10. Bow windows, wet bar in family room. Newer furnace, hot water heater, air conditioner, roof is only 4 months old. The lot goes on \$229,000 (OE11CAP) 248-679-3400 • 21583

REDUCED!!!
FARMINGTON HILLS. Regularly kimberly sub is where this exciting 4 bedroom, 2 1/2 bath tri-level is located. Many updates including kitchen, doors and fresh paint thru-out. Immediate occupancy. Call-de-sac lot. Priced at \$199,900 (OEWS03PIP) 248-737-9000 • 23783

EXCEPTIONAL PROPERTIES DESERVE EXCEPTIONAL ATTENTION
Coldwell Banker Schweitzer Real Estate takes great pleasure in offering you the opportunity to join a truly select group of people who have utilized the Previews program for their real estate transactions. If you have an exceptional property to sell, or one yet to be found, consider this: the Previews program is, like the homes themselves, without peer.

OPEN SUNDAY 1-4
24054 Bingham Pointe, N. of 13 Mile, E. of Telegraph
BINGHAM FARMS
COUNTRY-LIKE SETTING - Gorgeous newer townhouse with private back yard. This special condo offers great kitchen with all appliances, two fireplaces, and a grand master suite with balcony. Super value! \$254,500 248-642-2400 • 26313

OPEN SUNDAY 1-4
101 Douglas, S. of Square Lake, E. of Woodward
FABULOUS UPDATED RANCH
BLOOMFIELD HILLS. Beautiful new kitchen with cherry cupboards, ceramic tile floor and counters. Three bedrooms, 2 baths, private yard with huge cedar deck and pool. Security system and many updates! \$209,900 248-646-1800 • 26243

OPEN SUNDAY 1-4
101 Douglas, S. of Square Lake, E. of Woodward
FABULOUS UPDATED RANCH
BLOOMFIELD HILLS. Beautiful new kitchen with cherry cupboards, ceramic tile floor and counters. Three bedrooms, 2 baths, private yard with huge cedar deck and pool. Security system and many updates! \$209,900 248-646-1800 • 26243

PRICED TO SELL
BLOOMFIELD HILLS. 2,035 sq. ft. 3 bedroom, 2 1/2 bath! Foyer with cathedral ceiling. Family room with fireplace and doorwall to sunken patio with rock garden. \$153,000 (OE48FOX) 248-670-3400 • 23253

FABULOUS NEW CONSTRUCTION
FARMINGTON HILLS. Over 2,000 sq. ft. of gorgeousness, cathedral ceilings, spacious island kitchen with loads of cabinets and counter space; master bath with double sinks, 2 story ceramic foyer. Priced at \$257,900 (OEBS24-SUS) 248-737-0000 • 30163

NEW CONSTRUCTION
MADISON HEIGHTS. Pick your own carpet colors in this new beautiful colonial with 3 bedrooms, 1 1/2 baths, 1200 square feet, and 2 car garage. \$125,500 (OEWS02KAL) 248-645-5800 • 37863

GORGEOUS BRICK TUDOR
PONTIAC. Located in popular Ottawa Hills, this immaculate and tastefully decorated home offers newer roof and kitchen and the potential for six bedrooms. Attached garage and w/extra large lot. A must see home. \$179,900 (OEBSH39ILL) 248-646-1800 • 28133

QUALITY CONSTRUCTION
TROY. Wonderful design is part of this new 2,400 sq. ft. multi-level home. This home has 4 bedrooms, 3 full baths, cathedral and vaulted ceilings, indirect lighting, hardwood floors in foyer and kitchen, 2nd floor laundry. \$239,900 (OEBS0EVA) 248-642-2400 • 28263

WHITE LAKE. 3 bedroom, 3 1/2 bath contemporary. Enjoy the view of this 1 acre wooded site. First floor master bedroom. Fireplace in Great room and eat-thru fireplace between kitchen and dining room \$370,000 (OEBS11TUR) 248-737-0000 • 29063

BEST PRICE FOR WEST BLOOMFIELD
WEST BLOOMFIELD. West Bloomfield schools, 4 bedrooms, 2 1/2 baths, ceramic tile in foyer and kitchen. Gourmet kitchen, huge breakfast nook w/ fireplace \$309,900 248-737-9000 (OEBS25ALD) • 30013

TRANQUIL SETTING
WEST BLOOMFIELD. On all-sports Pine Lake. Three bedrooms, 2 1/2 baths, family room w/natural fireplace, separate bar area, new roof in 1998. \$339,000 (OEBS23BIR) 248-646-1800 • 26343

YOU WANT BRICK??
SYLVAN LAKE. This four bedroom, two bath brick tudor has a two car garage. Pool and cabana with kitchen and half bath. Location in Wood Lawn sub offers special privileges at park located on Sylvan Lake. \$174,900 248-737-9000 (OEBS19LAK) • 29923

BEAUTIFUL COLONIAL
SOUTHFIELD. This beautiful center entry colonial. Entranceway is 15x10. Bow windows, wet bar in family room. Newer furnace, hot water heater, air conditioner, roof is only 4 months old. The lot goes on \$229,000 (OE11CAP) 248-679-3400 • 21583

REDUCED!!!
FARMINGTON HILLS. Regularly kimberly sub is where this exciting 4 bedroom, 2 1/2 bath tri-level is located. Many updates including kitchen, doors and fresh paint thru-out. Immediate occupancy. Call-de-sac lot. Priced at \$199,900 (OEWS03PIP) 248-737-9000 • 23783

EXCEPTIONAL PROPERTIES DESERVE EXCEPTIONAL ATTENTION
Coldwell Banker Schweitzer Real Estate takes great pleasure in offering you the opportunity to join a truly select group of people who have utilized the Previews program for their real estate transactions. If you have an exceptional property to sell, or one yet to be found, consider this: the Previews program is, like the homes themselves, without peer.

OPEN SUNDAY 1-4
24054 Bingham Pointe, N. of 13 Mile, E. of Telegraph
BINGHAM FARMS
COUNTRY-LIKE SETTING - Gorgeous newer townhouse with private back yard. This special condo offers great kitchen with all appliances, two fireplaces, and a grand master suite with balcony. Super value! \$254,500 248-642-2400 • 26313

OPEN SUNDAY 1-4
101 Douglas, S. of Square Lake, E. of Woodward
FABULOUS UPDATED RANCH
BLOOMFIELD HILLS. Beautiful new kitchen with cherry cupboards, ceramic tile floor and counters. Three bedrooms, 2 baths, private yard with huge cedar deck and pool. Security system and many updates! \$209,900 248-646-1800 • 26243

OPEN SUNDAY 1-4
101 Douglas, S. of Square Lake, E. of Woodward
FABULOUS UPDATED RANCH
BLOOMFIELD HILLS. Beautiful new kitchen with cherry cupboards, ceramic tile floor and counters. Three bedrooms, 2 baths, private yard with huge cedar deck and pool. Security system and many updates! \$209,900 248-646-1800 • 26243

PRICED TO SELL
BLOOMFIELD HILLS. 2,035 sq. ft. 3 bedroom, 2 1/2 bath! Foyer with cathedral ceiling. Family room with fireplace and doorwall to sunken patio with rock garden. \$153,000 (OE48FOX) 248-670-3400 • 23253

FABULOUS NEW CONSTRUCTION
FARMINGTON HILLS. Over 2,000 sq. ft. of gorgeousness, cathedral ceilings, spacious island kitchen with loads of cabinets and counter space; master bath with double sinks, 2 story ceramic foyer. Priced at \$257,900 (OEBS24-SUS) 248-737-0000 • 30163

NEW CONSTRUCTION
MADISON HEIGHTS. Pick your own carpet colors in this new beautiful colonial with 3 bedrooms, 1 1/2 baths, 1200 square feet, and 2 car garage. \$125,500 (OEWS02KAL) 248-645-5800 • 37863

GORGEOUS BRICK TUDOR
PONTIAC. Located in popular Ottawa Hills, this immaculate and tastefully decorated home offers newer roof and kitchen and the potential for six bedrooms. Attached garage and w/extra large lot. A must see home. \$179,900 (OEBSH39ILL) 248-646-1800 • 28133

QUALITY CONSTRUCTION
TROY. Wonderful design is part of this new 2,400 sq. ft. multi-level home. This home has 4 bedrooms, 3 full baths, cathedral and vaulted ceilings, indirect lighting, hardwood floors in foyer and kitchen, 2nd floor laundry. \$239,900 (OEBS0EVA) 248-642-2400 • 28263

WHITE LAKE. 3 bedroom, 3 1/2 bath contemporary. Enjoy the view of this 1 acre wooded site. First floor master bedroom. Fireplace in Great room and eat-thru fireplace between kitchen and dining room \$370,000 (OEBS11TUR) 248-737-0000 • 29063

BEST PRICE FOR WEST BLOOMFIELD
WEST BLOOMFIELD. West Bloomfield schools, 4 bedrooms, 2 1/2 baths, ceramic tile in foyer and kitchen. Gourmet kitchen, huge breakfast nook w/ fireplace \$309,900 248-737-9000 (OEBS25ALD) • 30013

TRANQUIL SETTING
WEST BLOOMFIELD. On all-sports Pine Lake. Three bedrooms, 2 1/2 baths, family room w/natural fireplace, separate bar area, new roof in 1998. \$339,000 (OEBS23BIR) 248-646-1800 • 26343

YOU WANT BRICK??
SYLVAN LAKE. This four bedroom, two bath brick tudor has a two car garage. Pool and cabana with kitchen and half bath. Location in Wood Lawn sub offers special privileges at park located on Sylvan Lake. \$174,900 248-737-9000 (OEBS19LAK) • 29923

BEAUTIFUL COLONIAL
SOUTHFIELD. This beautiful center entry colonial. Entranceway is 15x10. Bow windows, wet bar in family room. Newer furnace, hot water heater, air conditioner, roof is only 4 months old. The lot goes on \$229,000 (OE11CAP) 248-679-3400 • 21583

REDUCED!!!
FARMINGTON HILLS. Regularly kimberly sub is where this exciting 4 bedroom, 2 1/2 bath tri-level is located. Many updates including kitchen, doors and fresh paint thru-out. Immediate occupancy. Call-de-sac lot. Priced at \$199,900 (OEWS03PIP) 248-737-9000 • 23783

EXCEPTIONAL PROPERTIES DESERVE EXCEPTIONAL ATTENTION
Coldwell Banker Schweitzer Real Estate takes great pleasure in offering you the opportunity to join a truly select group of people who have utilized the Previews program for their real estate transactions. If you have an exceptional property to sell, or one yet to be found, consider this: the Previews program is, like the homes themselves, without peer.

OPEN SUNDAY 1-4
24054 Bingham Pointe, N. of 13 Mile, E. of Telegraph
BINGHAM FARMS
COUNTRY-LIKE SETTING - Gorgeous newer townhouse with private back yard. This special condo offers great kitchen with all appliances, two fireplaces, and a grand master suite with balcony. Super value! \$254,500 248-642-2400 • 26313

OPEN SUNDAY 1-4
101 Douglas, S. of Square Lake, E. of Woodward
FABULOUS UPDATED RANCH
BLOOMFIELD HILLS. Beautiful new kitchen with cherry cupboards, ceramic tile floor and counters. Three bedrooms, 2 baths, private yard with huge cedar deck and pool. Security system and many updates! \$209,900 248-646-1800 • 26243

OPEN SUNDAY 1-4
101 Douglas, S. of Square Lake, E. of Woodward
FABULOUS UPDATED RANCH
BLOOMFIELD HILLS. Beautiful new kitchen with cherry cupboards, ceramic tile floor and counters. Three bedrooms, 2 baths, private yard with huge cedar deck and pool. Security system and many updates! \$209,900 248-646-1800 • 26243

PRICED TO SELL
BLOOMFIELD HILLS. 2,035 sq. ft. 3 bedroom, 2 1/2 bath! Foyer with cathedral ceiling. Family room with fireplace and doorwall to sunken patio with rock garden. \$153,000 (OE48FOX) 248-670-3400 • 23253

FABULOUS NEW CONSTRUCTION
FARMINGTON HILLS. Over 2,000 sq. ft. of gorgeousness, cathedral ceilings, spacious island kitchen with loads of cabinets and counter space; master bath with double sinks, 2 story ceramic foyer. Priced at \$257,900 (OEBS24-SUS) 248-737-0000 • 30163

NEW CONSTRUCTION
MADISON HEIGHTS. Pick your own carpet colors in this new beautiful colonial with 3 bedrooms, 1 1/2 baths, 1200 square feet, and 2 car garage. \$125,500 (OEWS02KAL) 248-645-5800 • 37863

GORGEOUS BRICK TUDOR
PONTIAC. Located in popular Ottawa Hills, this immaculate and tastefully decorated home offers newer roof and kitchen and the potential for six bedrooms. Attached garage and w/extra large lot. A must see home. \$179,900 (OEBSH39ILL) 248-646-1800 • 28133

QUALITY CONSTRUCTION
TROY. Wonderful design is part of this new 2,400 sq. ft. multi-level home. This home has 4 bedrooms, 3 full baths, cathedral and vaulted ceilings, indirect lighting, hardwood floors in foyer and kitchen, 2nd floor laundry. \$239,900 (OEBS0EVA) 248-642-2400 • 28263

WHITE LAKE. 3 bedroom, 3 1/2 bath contemporary. Enjoy the view of this 1 acre wooded site. First floor master bedroom. Fireplace in Great room and eat-thru fireplace between kitchen and dining room \$370,000 (OEBS11TUR) 248-737-0000 • 29063

BEST PRICE FOR WEST BLOOMFIELD
WEST BLOOMFIELD. West Bloomfield schools, 4 bedrooms, 2 1/2 baths, ceramic tile in foyer and kitchen. Gourmet kitchen, huge breakfast nook w/ fireplace \$309,900 248-737-9000 (OEBS25ALD) • 30013

TRANQUIL SETTING
WEST BLOOMFIELD. On all-sports Pine Lake. Three bedrooms, 2 1/2 baths, family room w/natural fireplace, separate bar area, new roof in 1998. \$3