



### Road construction work is ongoing in many Oakland County communities including:

■ **Bingham Farms** — Due to deteriorating roads, all five miles of local roadway are being repaved with a layer of chip seal to be completed by the end of September. Thirteen Mile and 14 Mile roads will not be repaved since they are not local roadways.

■ **Birmingham** — Pierce between Brown and Lincoln and Madison Avenue are being resurfaced. Both projects are set for a mid-September completion. Detours for the Adams project will route northbound traffic along Woodward and southbound traffic will be reduced to one lane.

■ **Bloomfield Township** — Squirrel Road, between Long Lake and Westview, will be resurfaced and reconstructed at the north end, beginning in mid-September. A detour will route drivers along Adams and Square Lake roads.

■ **Farmington** — Grand River will be widened to include a left turn lane and traffic signal at the Shiawassee intersection. Shiawassee, from Grand River to Farmington Road, will be closed during construction which should be completed by Sept. 30. The I-96 business loop, between Gill and Shiawassee, is being widened to include a center turn lane. One lane on northwest bound and southeast-bound Grand River may be closed at any time. Shiawassee will be closed and traffic detoured for a maximum of 45 days. One lane of westbound Shiawassee at the south leg of Farmington Road will also be closed.

■ **Farmington Hills** — Expansion of the Haggerty Connector (M-5) has closed 13 Mile Road, between Haggerty and Meadowbrook, until Sept. 13. Beam repair work has started on the 10 Mile bridge over I-96/I-275 with an expected completion in late October. There will be hourly closures on I-96/I-275. Paving and drainage improvements have started at the west end of the Meadowbrook Hills subdivision near 8 Mile and Halsted. All streets will be repaved with the project to be completed Sept. 16.

■ **Independence Township** — White Lake Road near Andersonville Road is closed to through traffic. It is being widened to three lanes and realigned with Nelsay Road. Detour route drivers down Dixie Highway to Andersonville until the expected completion in November when the southern portion of White Lake Road will be turned into a cul-de-sac instead of intersecting Andersonville.

■ **Novi** — Expansion of the Haggerty Connector

(M-5) has closed 13 Mile Road, between Haggerty and Meadowbrook, until Sept. 13. Beam repair work has started on the 10 Mile bridge over I-96/I-275 with an expected completion in late October. There will be hourly closures on I-96/I-275. The southbound lane of Haggerty Road north of 8 Mile will be extended. Work is scheduled to start Sept. 8.

■ **Orion Township** — Silverbell Road at M-24 will be widened to include a left-turn lane and the right turn lane on westbound Silverbell at M-24 will be extended. The projects are expected to be completed by November. The changes will help with drainage problems.

■ **Oxford** — An overlay of pavement will be added to East Street between Washington and Glasgow and on W. Burdick between Polly Anna Trail and the west village limit and will be completed by mid-October.

■ **Rochester Hills** — Hamlin Road is being reconstructed to a four-lane boulevard from M-59 to Crooks Road. The project, which is expected to be completed by the spring of 1998, will include the completion of the east-west link from the new M-59 ramp to various business facilities. The roadway is closed, except for local traffic, with detours across M-59 and Avon Road. A left turn lane is being added at the intersection of Auburn Road and Technology with a traffic light installed. The new light will assist residents of Chateau Avon Mobile Home Park. The gravel roadways of June and Tamm will be paved this month. The project is expected to last 30 days.

■ **Southfield** — Greenfield bridge over the Northwestern Highway (M-10) is under construction for deck replacement with southbound Greenfield closed and traffic detoured along Pembrooke. Lanes are expected to reopen Oct. 30, 1997. Residential roadways east of Lahar and west of Arlington between Winchester and 11 Mile are undergoing spot concrete replacement to be completed by Oct. 31.

■ **Troy** — Adams, between the northern city limits and Madison Avenue is being resurfaced with a mid-September completion. Northbound traffic will be detoured along Woodward and southbound traffic will be reduced to one lane.

NOTE: Unless otherwise stated, detours are unknown or not planned.  
Source: Local, county, city and village road officials.

— Compiled by staff writer Jennifer Pincini

## Two Oakland agencies receive grants

Two Oakland County social service agencies have received program assistance from Southfield-based Providence Hospital and Medical Centers and Ann Arbor-based Saint Joseph Mercy Health System.

■ **Southfield-based Operation**

ABLE: \$73,000 to provide employment training for the elderly population.

■ **Oakland County-based Community Health Advocacy:** \$100,000 for support of the health advocacy project for women and children of the Ar-

abic and Chaldean American communities.

The two health care organizations will provide \$1 million per year to the Community Health Improvement Fund in addition to existing funds for charity care programs.



## APETITEPRESENCE

Find the perfect fit during our Petite Week Fall 1997 preview today through Saturday, September 20, in our Petite department in the Sport Shop. From career elements to casual sportswear, we have options from all your favorite names.

Emanuel/Emanuel Ungaro Petite  
Emanuel/Emanuel Ungaro Liberté Petite  
Dana Buchman Petites  
Burberry of London Petites  
Anne Klein II Petites  
Δ Line Anne Klein Petites  
Linda Alford for Ellen Tracy Petites

Neiman/Marcus

THE SOMERSET COLLECTION 248 043 3300 FOR STORE EVENTS CALL TOLL-FREE 1-800-888-8888

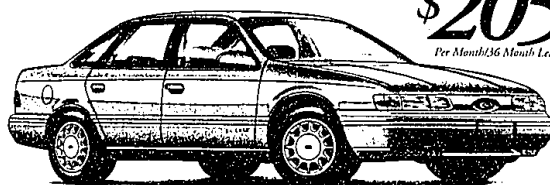
## Cash back up to \$1300!

### Low lease payments on two year old Contour and Taurus!

Right now, at your Metro Detroit Ford Dealer,  
hundreds of Ford vehicles are coming back from 24 month leases  
and are available at very affordable lease rates.

These are low mileage lease vehicles  
and still carry the remainder of the factory warranty.  
It's your chance to drive the exciting late model Ford  
you've always wanted, at a price you can enjoy!  
See your participating Metro Detroit Ford Dealer today!

#### 1995 Taurus GL



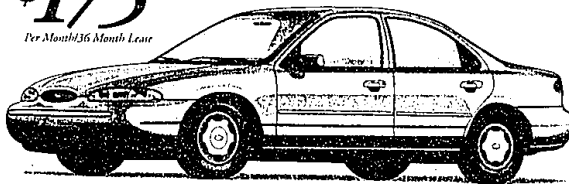
Lease for about  
**\$205**  
Per Month/36 Month Lease

#### 1995 Taurus features...

- 3.0L V-6 Engine • Automatic Overdrive Throttle
- Tilt Steering • Digital Clock • Power Windows, Brakes and Steering
- Solar Tinted Glass • Tilt Steering • Dual Airbags\*\*\*
- Air Conditioning • Deluxe Wheel Covers

36 Month/36,000 Mile Rent Car Lease  
Capitalized Cost..... \$11,020.00  
Down Payment..... \$ 1,206.00  
Refundable Security Deposit... \$ 225.00  
First Month Payment..... \$ 205.12\*

Lease for about  
**\$175**  
Per Month/36 Month Lease



#### 1995 Contour

#### 1995 Contour features...

- Dual Airbags • Power Brakes/Steering • Solar Tinted Glass
- Interval Wipers • Headlight Warning Chime
- Remote Decklid Release

36 Month/36,000 Mile Rent Car Lease  
Capitalized Cost..... \$ 9,707.00  
Down Payment..... \$ 1,085.22  
Refundable Security Deposit... \$ 175.00  
First Month Payment..... \$ 174.71\*



Plus! You'll find more great deals  
on additional pre-leased Ford vehicles when you  
visit your 31 Metro Detroit Ford Dealers!

#### 1995 Windstar

<b>BLOOMFIELD HILLS</b> Alan Ford (248) 333-3000	<b>FERNDALE</b> Ed Schmidt Ford (248) 399-1000	<b>REDFORD</b> Pat Milliken Ford (313) 255-3100
<b>CENTERLINE</b> Rob Thibodeau (810) 755-2100	<b>FLAT ROCK</b> Superior Ford (313) 782-2400	<b>ROCHESTER</b> Huntington Ford (248) 852-0400
<b>DIARBORN</b> Fairlane Ford Sales (313) 846-5000	<b>LIVONIA</b> Bill Brown Ford (313) 421-7000	<b>ROYAL OAK</b> Royal Oak Ford (248) 548-4100
<b>DEARBORN</b> Village Ford (313) 565-3800	<b>MT. CLEMENS</b> Mike Dorian Ford (810) 792-1100	<b>SOUTHFIELD</b> Avis Ford (248) 355-7500
<b>DETROIT</b> Jensen Ford (313) 564-2250	<b>MT. CLEMENS</b> Ruth Milne Ford (810) 293-7000	<b>SOUTHGATE</b> Southgate Ford (313) 282-3636
<b>DETROIT</b> Stark-Hickory West (313) 538-6600	<b>NORTHVILLE</b> McDonald Ford Sales (248) 349-1400	<b>ST. CLAIR SHORES</b> Ray O'Brien (810) 776-7600
<b>DETROIT</b> Riverside Ford Sales (313) 567-0250	<b>OAK PARK</b> McFarland Ford (248) 967-3700	<b>STERLING HEIGHTS</b> Jimmie Duncan (810) 268-7500
<b>FARMINGTON HILLS</b> Tom Holzer Ford (248) 474-1234	<b>PLYMOUTH</b> Blackwell Ford (313) 453-1100	<b>TAYLOR</b> Ray Whitfield Ford (313) 291-0300
		<b>WATFORD</b> Hannery Ford, Inc. (248) 356-1260
		<b>WAYNE</b> Jack Demmer Ford (313) 721-2600
		<b>WESTLAND</b> North Branch Ford (313) 421-1300
		<b>WOODHAVEN</b> Gomez Ford (313) 676-2200

\* Example lease payment based on average capitalized cost of 6.80% of the original MSRP of a 1995 Taurus GL with 2.5L V-6, an average capitalized cost of 6.80% of the original MSRP of a 1995 Contour with 2.5L V-6 as provided by Ford Credit for a 36-month closed ended Ford Credit Rent Car Lease purchased in the nation through 497 excluding title, tax and license and based on 12,000 miles per year. Actual prices of individual vehicles are determined by the dealer and will vary due to many factors including model, mileage, model year condition of the vehicle and dealer participation. Dealer is responsible for excess wear/tear and mileage at \$15/mile in excess of contracted mileage. Lessee may have the option to purchase vehicle at lease end at a price negotiated with dealer at signing. Tax, title and fees are extra. Credit responsibility is determined by Ford Credit. Annual security deposit will vary depending on credit history and other factors. For special lease terms and 12,000 MCL Cash for Taurus GL, \$1300 MCL for 1995 Contour take new retail \$1,000 from dealer stock by 10/1/97. Total amount of monthly payments is \$7,384.32 for Taurus GL, \$6,201.56 for Contour, plus secured acquisition fee of \$155 for each vehicle, \$1300 MCL. Cash may be taken as cash, but is used towards down payment in monthly lease payments. See dealer for actual price and complete details. \*\* See your participating dealer for details on limited warranty coverage. Dealer participation may affect payment. \*\*\* Always wear your safety belt and secure children in the rear seat.