

Community Messenger features spiritual announcements from Oakland County religious institutions. Write: Community Messenger, c/o Beliefs & Values Editor, Observer & Eccentric Newspapers, 805 E. Maple, Birmingham, MI 48009. Our fax number is (248) 644-1314.

SHIR TIKVAH FUND-RAISER
Cong. Shir Tikvah is holding a fund-raiser from 11 a.m. to 5 p.m. on Friday, Feb. 6, at Barnes & Noble Bookstore, 2800 Rochester Road, between Hamlin and Auburn roads, in Rochester Hills.
The congregation will receive a percentage of the store's sales, which will assist with the building of its first permanent home at the corner of Wattles and Northfield Parkway in Troy.
The public is encouraged to shop and meet with congregants, who will be spending the day at the store.

Cong. Shir Tikvah is holding a learning Sabbath service at 7:45 p.m. on Friday, Feb. 6, at Northminster Presbyterian Church, 3633 W. Big Beaver, between Coolidge and Adams, in Troy.

The service is being held in conjunction with the Detroit-wide Jewish community effort to "Rekindle Shabbat" and bring the people into a deeper and more profound understanding of their Jewish heritage. Family education students in grades 4 through 6 will assist

in leading prayers. Rabbi Arnie Sleutelberg will talk about the prayers' origin, historical context and the reasons they were inserted into the service in a particular order. Oneg Shabbat (coffee and dessert buffet) follows the service. For information, call (248) 619-9669.

First Church of Christ, Scientist, Birmingham is hosting two talks on spiritual healing by lecturer Susan Cobb. A discus-

sion of Mary Baker Eddy's book, "Science and Health with Key to Scriptures," will be held at 7:30 p.m. on Feb. 9, at Barnes & Noble Bookstore, 6575 Telegraph Road, Bloomfield Township. A discussion on "What Is Spirituality? What Is Spiritual Healing?" will be held at 7:30 p.m. on Feb. 10, in the Rotary Room at the Baldwin Public Library, 300 W. Merrill, Birmingham. For information, call (248) 644-7935.

A joint book club meeting of Troy-based Cong. Shir Tikvah and its sister congregation, the Detroit-based Plymouth United Church of Christ, will be held at 7:30 p.m. on Sunday, Feb. 15. In this month's non-fictional book selection, "Pearlie & Tessie," author Joyce Horowitz describes the influence her two grandmothers had on her life. For the meeting location, call (248) 855-9914.

director for Detroit-based Friends of the Rouge. "I'm an environmentalist by nature and profession. Not only did I personally find a blend for my two passions, but I also found that it already existed in Judaism."

Once she returned to Oakland County, Hoffer approached the Jewish Federation's Community Outreach and Education Department with a proposal for an environmentalist group. Tava, the Hebrew word for nature, was born last spring to provide Jews with outdoor experiences, volun-

tary restoration projects and religious and spiritual activities relating to the environment.

Tova's first meeting drew a crowd of 60 interested individuals. Seasonal events have included a summer day of activities at Kensington Park and a winter Havdallah, when the ending ceremony for the Sabbath focused on prayers connected with the earth. A hands-on restoration project is being planned for this spring.

Contact Kari Grosinger at
(248) 642-4260, ext. 241.

The Best Savings You Can Imagine.

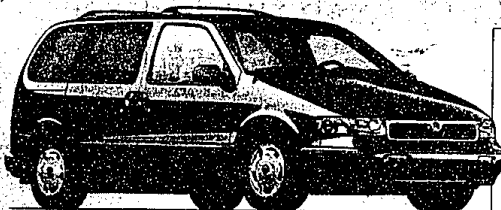
\$269

7-Month/27,000-Mile Red Carpet Lease	
Capitalized Cost	\$18,667
Down Payment (Net of RCL Cash)	\$1,650
Refundable Security Deposit	\$275
First Month's Payment	\$268
Cash due at signing	\$2,194
1.5 mile over 27,000 miles	



Features Include:

3.0-liter V-6 engine • Second Generation dual air bags* • Tilt steering column
Flip-fold center console • Power windows and door locks.

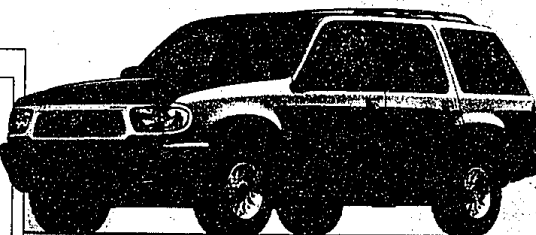


Features Include:

3.0-liter SOHC V-6 engine • Flexible seating system • Second Generation dual air bags* • Front-wheel drive • Power rack-and-pinion steering

\$309

PER MONTH FOR 24 MONTHS ²	
4-Month/24,000-Mile Red Carpet Lease	
Capitalized Cost	\$122,631
Down Payment (Net of RCL Cash)	\$12,350
Refundable Security Deposit	\$325
First Month's Payment	\$309
Cash due at signing	\$12,984
1.5mile over 24,000 miles	



Features Include:

5.0-liter OHV V-8 engine • Power windows and door locks • Second Generation dual air bags*
4-wheel disc anti-lock brakes • Fingertip speed control with tap-up/tap-down feature

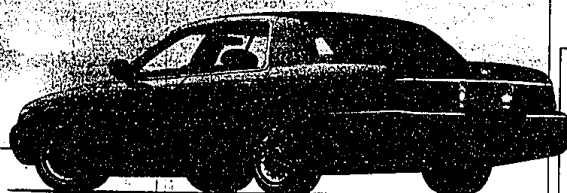
\$369

PER MONTH FOR 24 MONTHS¹

24-Month/24,000-Mile Red Carpet Lease

Capitalized Cost	\$28,384
Down Payment	\$1,990
Refundable Security Deposit	\$375
First Month's Payment	\$369
Cash due at signing	\$2,734

¹\$15/mile over 24,000 miles




Features Include:

- 4.6-liter SOHC V-8 engine • Second Generation dual air bags • 8-way power driver's seat • Power decklid release, locks and windows • Dual power fold-away mirrors
- Rear seat heat ducts • Fingertip speed control with tap up/tap down feature

**ARRIVING
DAILY!**

\$500

CASH BACK*
—OR—
**Special Introductory
Lease Rates**

Imagine yourself in a Mercury 
www.lincolnm Mercury.com

1993 Mercury Sable GS MSRP \$19,895 excluding dealer tax, license fees. Lease payment based on average capitalized cost of 93.36% of MSRP for 24-month closed-end Ford Credit Rent Carpet Leases purchased in the Great Lakes Area through 1/30/97. Lease is responsible for 24 months of MSRP. \$500 cash new retail delivery from dealer stock by 4/29/98. 1993 Mercury Villager GS with PEI #02A MSRP \$24,785 excluding dealer tax, license fees. Lease payment based on average capitalized cost of 91.31% of MSRP for 24-month closed-end Ford Credit Rent Carpet Leases purchased in the Great Lakes Area through 1/30/97. Lease is responsible for excess wear/tear. For special lease levels and \$2,000 RCL cash take new retail delivery from dealer stock by 4/29/98. 1993 Mercury Marquis GS with PEI #02A MSRP \$24,785 excluding dealer tax, license fees. Lease payment based on average capitalized cost of 91.43% of MSRP for 24-month closed-end Ford Credit Rent Carpet Leases purchased in the Great Lakes Area through 1/30/97. Lease is responsible for excess wear/tear. For special lease levels and \$2,000 RCL cash take new retail delivery from dealer stock by 4/29/98. For \$500 cash take on 1993 Mercury Grand Marquis, take new retail delivery from dealer stock by 4/29/98. *Always wear your safety belt and always drive within the limit.

Antique & Vintage Dolls
10%-40% off

Many rare
collections
Ends 2-10-98

Bisque • China • Composition
Hard plastic • Older Alexanders

**The Doll Hospital
& Toy Soldier Shop**

3947 W. 12 Mile Rd. • Berkley
(248) 543-3118 • M-Sat. 10-10:30, Fri. 10-9

SINCE 1984
COMPUTERIZE INC.

[illegible]

IT'S A SELLER'S MARKET

**Liquidate
your fine
quality
home
furnishings
with
minimal
involvement
and optimal
results.**

**We accept
gently-used
fine
furniture,
decorative
accessories,
lighting and
art.**

**Call today to
schedule an
appointment.**

248-414-9026

SECOND SEASON

3860 W. Twelve Mile Road
Berkley