

OAKLAND DIGEST

Oakland Digest provides a summary of headline stories from around the county during the week leading up to March 26.

BLOOMFIELD HILLS
Students get geography lesson: As part of a geography project, third-grade teacher Faye Heller and her students at Pine Lake Elementary School in the Bloomfield Hills School District participated in the "Peace Bird" project to see how many places around the world the carved bird would visit before winding up back at the school. The bird's travels included Miami; Green Bay, Wis.; Boston; Athens, Greece; Kuwait; Italy; and Savannah, Ga.

CLARKSTON
Singer releases CD: Gospel singer Gail Ellege recently released an inspirational compact disc "Boast in the Lord," a gripping account of the murder of her husband Dan Ellege in California nearly six years ago. The CD can be purchased at Detroit-area Dickson's Book stores. For further information, call (248) 543-7444.

FARMINGTON
Crime survey reported: According to the annual public safety report, there were fewer serious crimes last year in Farmington than at any time since records started being kept in 1974 but drunken driving arrests and larcenies from automobiles increased. Once again, there were no homicides in the city.

LAKE ORION
Students propose bill: About 60 students from Lake Orion's Stadium Elementary School attended a House Agricultural Committee hearing to propose a bill that would designate the morel mushroom as the state's official fungus. Still ahead is House approval and Governor Engler's signature.

NYC cop tells how community policing cut crime

New York City Police Deputy Inspector Edward Cannon will be the featured speaker at a roundtable discussion from 9-11 a.m. Wednesday, April 1, at the Guardian Security building in Southfield. Cannon will discuss community policing, which is credited with dramatically reducing crime rates in New York City.

Sponsored by Waste Management of Michigan and Guardian Security, the program also features associate director of the National Center for Community Policing at Michigan State University and former Lansing chief of police, Jerry Boles.

Members of the 8MBA include businesses, neighborhood groups, the 13 communities and three counties along Eight Mile and the Michigan Department of Transportation. The association, which strives to revitalize and promote the Eight Mile transportation business and residential corridor by linking the efforts of public and private sectors, serves 27 miles of road from I-94 to I-275.

Guardian Security is located at 20800 Southfield Road at Eight Mile. For more information and to RSVP by March 27, call (248) 659-8633.

Orchard Ridge hosts open house

Oakland Community College's Orchard Ridge Campus will host an open house for prospective students and the community from 6-8:30 p.m. Thursday, April 2. Admission is free, and refreshments will be provided.

Entitled "The OCC Advantage," the event will spotlight campus facilities, resources and services, including the newly-renovated Community Activities/Physical Education Building, the Smith Theatre for the Performing Arts, and the Smith Theatre Art Gallery.

Representatives of campus departments will be on hand to answer questions. Guided tours will also be featured.

For further information call Marie Faulkner at (248) 471-7628.

The Orchard Ridge Campus is located at 27055 Orchard Lake Road, just south of I-696 in Farmington Hills.

OXFORD
Residents honored for heroic efforts: Oxford residents Kyle Lewkowicz, 6, and Jason Slann, a senior at Oxford High School, were recognized by the Oxford Emergency Safety Authority for their unselfish acts. Lewkowicz was recognized for knowing to dial 911 when his mom, Ann Marie Lewkowicz, was suffering from diabetic shock and Slann received kudos for administering the Heimlich maneuver on his classmate, Mike Davidson, who

was choking on a piece of candy.

ROCHESTER HILLS
Students win competition: Student teams from Van Hoesen Middle School, Hugger Elementary and Musson Elementary performed their way to a first place finish in the regional Odyssey of the Mind competition held at Rochester Adams High School. They'll compete in the state competition on April 25 at Central Michigan University.

SOUTHFIELD
City seeks public's opinion: The City of Southfield Community Relations Department's Neighborhood Center is asking residents: "What do you think of Southfield City Services?" at the annual Neighborhood Association Workshop, 9 a.m. to noon, Saturday, April 4, at the Southfield Centre for the Arts. A continental breakfast will be served at 8:30 a.m. Call the Neighborhood Center to RSVP, 354-4400.

TROY
Filing date nears: Anyone interested in running for one of three available seats on the Troy Board of Education must turn in their petition by 4 p.m. Monday, April 6. Those interested must be a registered voter in the school district and gather at least 25 signatures of voters in the Troy School District. Petition packets are available at the Administrative Center.

WEST BLOOMFIELD
Michigan State Lottery officials

are looking for two winners of the March 28, 1997 Big Game drawing. One of the tickets, which is worth \$150,000, was sold at the Arbor Drugs, located at 4299 Orchard Lake Road. The winning numbers were 1,43, 47, 48, 50 and the Big Money Ball number was 17. The winners have until the close of business on Monday, March 30 to turn in their tickets and can claim prizes by calling (517) 335-5640.

—Compiled by staff writer Sara Callender

The Best Savings You Can Imagine.

1998 MERCURY SABLE GS

\$269

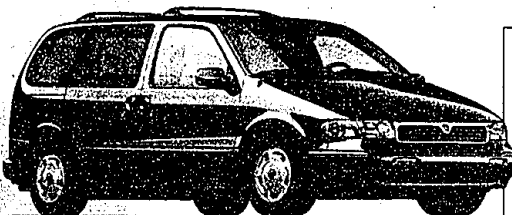
PER MONTH FOR 27 MONTHS*

27-Month/27,000-Mile Red Carpet Lease
Capitalized Cost \$18,667
Down Payment (5% of RCL Cash) \$1,650
Refundable Security Deposit \$275
First Month's Payment \$269
Cash due at signing \$2,194
\$15/mile over 27,000 miles



Features Include:

3.0-liter V-6 engine • Second Generation dual air bags* • Tilt steering column
Flip-fold center console • Power windows and door locks.



1998 MERCURY VILLAGER GS

\$279

PER MONTH FOR 36 MONTHS*

36-Month/36,000-Mile Red Carpet Lease
Capitalized Cost \$22,611
Down Payment (5% of RCL Cash) \$1,500
Refundable Security Deposit \$300
First Month's Payment \$279
Cash due at signing \$2,079
\$15/mile over 36,000 miles

Features Include:

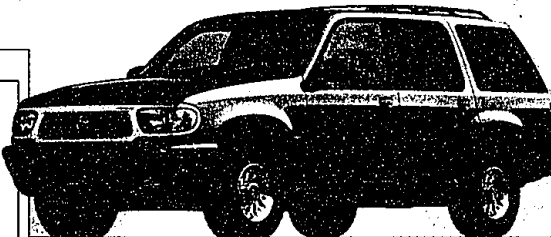
3.0-liter SOHC V-6 engine • Flexible seating system • Second Generation dual air bags* • Front-wheel drive • Power rack-and-pinion steering

1998 MERCURY MOUNTAINEER

\$369

PER MONTH FOR 24 MONTHS*

24-Month/24,000-Mile Red Carpet Lease
Capitalized Cost \$28,381
Down Payment \$1,900
Refundable Security Deposit \$375
First Month's Payment \$369
Cash due at signing \$2,734
\$15/mile over 24,000 miles



Features Include:

5.0-liter OHV V-6 engine • Power windows and door locks • Second Generation dual air bags*
4-wheel disc anti-lock brakes • Fingerprint speed control with tap-up/tap-down feature



Features Include:

4.6-liter SOHC V-8 engine • Second Generation dual air bags* • 8-way power driver's seat • Power decklid release, locks and windows • Dual power fold-away mirrors
• Rear seat heat ducts • Fingerprint speed control with tap-up/tap-down feature

ARRIVING DAILY!

THE NEW 1998 MERCURY GRAND MARQUIS

\$500

CASH BACK*

—OR—
Special Introductory Lease Rates

Imagine yourself in a Mercury

www.lincolnmurcury.com

*1998 Mercury Sable GS MSRP \$19,995 excluding title, tax, license fees. Lease payment based on average capitalized cost of 91.36% of MSRP for 24-month closed-end Ford Credit Red Carpet Leases purchased in the Great Lakes Area through 11/30/97. Lessee is responsible for excess wear/tear. For special lease terms and \$750 RCL cash take new retail delivery from dealer stock by 4/2/98. *1998 Mercury Villager GS with PEP 692A MSRP \$24,785 excluding title, tax, license fees. Lease payment based on average capitalized cost of 91.31% of MSRP for closed-end Ford Credit Red Carpet Leases purchased in the Great Lakes Area through 11/30/97. Lessee is responsible for excess wear/tear. For special lease terms and \$1,000 RCL cash take new retail delivery from dealer stock by 4/2/98. *1998 Mercury Mountaineer with V-6 engine, AWD and PEP 655A MSRP \$31,045 excluding title, tax, license fees. Lease payment based on average capitalized cost of 91.43% of MSRP for 24-month closed-end Ford Credit Red Carpet Leases purchased in the Great Lakes Area through 11/30/97. Lessee is responsible for excess wear/tear. For special lease terms take new retail delivery from dealer stock by 4/2/98. *For \$500 cash back on 1998 Mercury Grand Marquis, take new retail delivery from dealer stock by 4/2/98. *Always wear your safety belt and secure children in the rear seat.



Visit Your Metro Detroit Mercury Dealer.

ANN ARBOR
Apollo
2100 W. Stadium Blvd.
Ann Arbor, MI 48106
(313) 668-6100

DEARBORN
Krug
21331 Michigan Ave.
Dearborn, MI 48124
(313) 274-8800

DETROIT
Bob Maxey
1901 Mack Ave.
Detroit, MI 48201
(313) 855-4000

DETROIT
Park Motor
16100 Woodward Ave.
Westland, MI 48186
(313) 869-5000

FARMINGTON
Bob Dusseau
31625 Grand River Ave.
Farmington Hills, MI 48334
(248) 474-3170

GARDEN CITY
Stu Evans
32000 Ford Rd.
Garden City, MI 48135
(313) 423-4300

NOVI
Varsity
49251 Grand River
Novi, MI 48164
(248) 350-NOVI (6664)

PLYMOUTH
Hines Park
40001 Ann Arbor Rd.
Plymouth, MI 48171
(313) 850-5500

ROCHESTER HILLS
Crisman
1800 South River Rd.
Rochester Hills, MI 48309
(248) 652-4200

ROSELAND
Arnold
2900 Grand
Rosedale, MI 48063
(810) 445-6000

ROYAL OAK
Diamond
221 Main Street
Royal Oak, MI 48067
(248) 541-8830

SOUTHFIELD
Star
24150 West 12 Mile Rd.
Southfield, MI 48034
(248) 374-4400

SOUTGATE
Stu Evans
10600 Fort Street
Southgate, MI 48180
(313) 283-8800

STERLING HEIGHTS
Crest
36000 Van Dyke
Sterling Heights, MI 48309
(810) 919-6600

TROY
Bob Borst
1950 West Maple
Troy, MI 48064
(248) 643-6600

WATERFORD
Mel Farr
4178 Highland Rd. (M-58)
Waterford, MI 48106
(248) 640-9500

YPSILANTI
Sesl
950 East Michigan
Ypsilanti, MI 48197
(313) 482-7133