

For Emergency Care  
That is  
State-of-the-Heart

## St. Mary Hospital

**S**tate-of-the-heart is St. Mary Hospital's unique combination of modern medical technology and the attentive personal care you've come to expect from us.

Our St. Mary Hospital Emergency Center doctors are residency-trained and board-certified in emergency medicine. They go out of their way to explain procedures and diagnoses to patients and families.

Our Urgent Care Center, for minor injuries and illness, has a dedicated casting room and x-ray equipment to help take care of life's little emergencies quickly. And, if your condition turns out to be more serious, you're already at a full-service hospital.

In fact, the St. Mary Hospital Emergency Center can check the state of your heart. Our new Chest Pain Evaluation Unit quickly evaluates, tests and monitors your heart — without admitting you to the hospital.

St. Mary Hospital Emergency Center. Emergency medicine that's state-of-the-art and state-of-the-heart.



**St. Mary Hospital**  
36475 Five Mile Road  
Livonia, MI 48154  
Affiliated with  
William Beaumont Hospital

Physician Referral Service  
1-888-464-WELL  
Visit St. Mary via Internet  
<http://www.stmaryhospital.org>

Emergency Center  
24-hours, 365 days  
Urgent Care  
11am - 11pm, 365 days



## Rally from page A7

agencies have to be more aggressive in making sure minority companies can compete for contracts, he said.

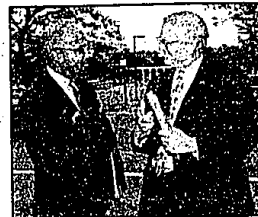
"We've made much progress, but suggesting and pretending now that we have a level playing field and can afford to be color blind is simply dishonest," Archer said. "Each of us can recognize from personal experience as well as from incidents reported in the news that racism, regrettably, is alive and well in our region and in our country."

During the rally, which included music from the Harrison High marching band and the East Middle School choir, community

members provided testimonials to the commitment to diversity.

"The color barrier is really becoming erased," said Donna Davis, North Farmington High senior. "We're beginning to see past color, which is very important thing because coming into the job world there is a lot of teamwork involved."

"You really need to be able to work with all kinds of people in all types of situations."



STAFF PHOTO BY BILL BEEZLER

**Connecting: Farmington Public Schools Superintendent Bob Maxwell greets Detroit Mayor Dennis Archer.**

## 3-way from page A1

light by residents. Subsequent patrols by the Farmington Public Safety Department turned out to be "pretty productive."

"We'd like to get the traffic out of the subdivision," Goss said, "and more importantly, that could happen naturally if we could get the intersection to flow. There are times when people wait four or five light cycles" trying to turn left from northbound Orchard Lake onto Grand River. Those who want to continue

northbound on Orchard Lake are forced to jog over four blocks on Grand River before picking it up again, Goss said.

Meanwhile, with the flare lanes, traffic could keep moving in tandem with left-hand-turn signal cycles.

"It would really alleviate congestion down at that end of town," said Goss, about the proposed improvements, endorsed by both cities as well as by the Traffic Improvement Association

of Oakland County.

DeCorte suggested that the council send letters to MDOT and the county road commission, which would oversee the Grand River and Nine Mile flare lane projects, respectively.

Writing to Raczkowski was suggested by councilman Arnold Campbell, to help speed up the response time from the two jurisdictions.

## Murder from page A1

son-in-law, arrived home from work around noon on Friday, startling the killer. Sharma was then tied up with an electrical cord, Zavislak said.

After the suspect left, Ajay Sharma freed himself and found his father-in-law dead. He then called police from a neighbor's house, Zavislak said.

Police are not yet releasing how Patel was killed.

Christian Long allegedly attempted to set the house on fire, but there was only minor damage to the house, Zavislak said. Christian Long allegedly stole a Ford Explorer from the house while fleeing the residence. He later allegedly tried to set fire to the vehicle. The Explorer was later found in Detroit Saturday.

Christian Long was arrested Monday in Detroit.

According to a police press

release, evidence at the home indicates Patel may have known his killer. The cause of death had not been released at press time.

"We are still investigating the relationship (between Patel and Long)," Zavislak said. "We do want to stress that this was not a random act."

Long's brothers, Nicholas Long, 19, and Justin Long, 22, were also arraigned Tuesday. They each were charged with being an accessory after the fact to a felony, a maximum five-year penalty and/or a \$10,000 fine. They are held on a \$250,000 cash or surety bond in Oakland County Jail. A not-guilty plea was entered for them by Martone.

"The brothers did nothing wrong," said Nicholas' girlfriend, Angie Villarreal. "They were trying to get Christian to turn him-

self in."

Christian Long, who was paroled from prison Aug. 31 after serving five years of two, 10-year armed-robbery sentences in Wayne County, is being held without bond in Oakland County Jail.

Christian Long was charged on six counts including: first degree premeditated murder, a life sentence without parole; first degree felony murder, a life felony; attempted murder, which could be a life sentence or any other determined term; arson of a dwelling, a 20-year sentence; assault with intent to rob while armed, a 15-year sentence; unlawfully driving away a motor vehicle, a 5-year sentence.

A preliminary hearing for Christian, Justin and Nicholas Long will begin at 8:30 a.m. Monday, Oct. 5, in front of Judge William Bolle.

In Order To Treat It...You've Got To Understand It.

## Botsford General Hospital Is Offering A DEPRESSION SCREENING DAY

Thursday, October 8, 1998 • Livonia Mall

Why depression? Because it affects over 17 million Americans of all ages. Because it is often missed or misdiagnosed. Because people believe it is something to be ashamed about. Botsford General Hospital is participating in National Depression Screening Day because we believe this is about mental health — not mental illness. Caring for your emotional health is as important as taking responsibility for your physical health. Did you know...one out of every five Americans may experience depression at some point during his or her life. And like high blood pressure or diabetes, if not diagnosed and properly treated, the long-term consequences can become life-threatening. Depression is a disease — not a fault, failing or weakness. If you or someone you know experiences the signs or symptoms of depression — depressed mood over prolonged period of time; loss of interest in activities; changes in appetite or weight; sleep disturbances; feelings of worthlessness; lack of concentration — an anonymous, free, confidential screening test may help identify if treatment would help. Botsford General Hospital will be conducting information sessions and screenings at Livonia Mall (near the Sears court, by the fountain), Thursday, October 8, 1998. The sessions will begin at 10 a.m., 12 noon, 2 p.m., 4 p.m. and 6 p.m. For more information please call Botsford General Hospital Community Relations Department (248) 442-7986.



Reaching Out To The People Of Our Community  
28030 Grand River Avenue, Farmington Hills, MI 48336-5933

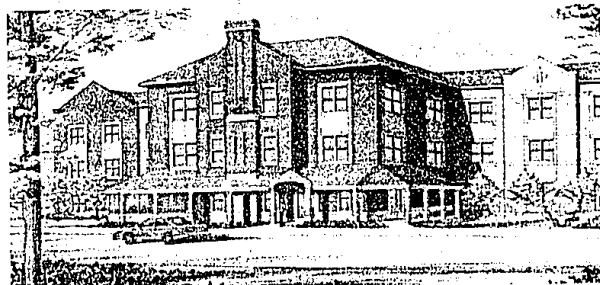


## Regent Street of West Bloomfield

4460 Orchard Lake Road  
West Bloomfield, MI 48323

Assisted living,  
with catered services  
in beautiful surroundings  
created especially  
for older adults.

Studios and suites with private baths  
Three well planned daily meals  
Emergency call systems  
Housekeeping and linen services  
Round the clock staffing  
Nurse manager  
Personal care assistance  
Medical supervision  
Spa with pool and exercise room  
Scheduled activities  
Game room  
Library  
Hair salon  
Sundries shop  
Transportation  
Valet parking for residents



Includes all utilities with the exception of telephone and cable television  
Call Renee Mahler at 248.683.1010 for additional information