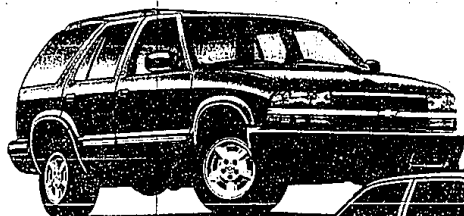


It Might Be Hard To Believe, But These Chevrolet® Offers Are Perfectly Legal.



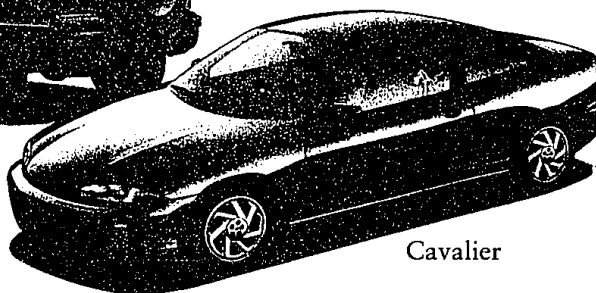
Blazer



Malibu



Tracker



Cavalier

Choose From These GMAC® SmartLease® Offers.

Blazer® 4-Door

- Powerful V6 Engine
- Standard Four-wheel Antilock Disc Brakes

\$299 a month*

36-Month Lease
\$999 Down Payment
\$299 1st Month Payment
\$325 Security Deposit
\$1,623 Due at Lease Signing

Tracker® 4-Door 4WD

- Shift-on-the-fly Four-Wheel Drive
- Rugged And Durable Full-Length Ladder-Type Frame

\$199 a month*

36-Month Lease
\$875 Down Payment
\$199 1st Month Payment
\$225 Security Deposit
\$1,299 Due at Lease Signing

Cavalier® Coupe

- Best-Selling Small Car In 1999†
- Standard Four-Wheel Antilock Brakes

\$198 a month*

36-Month Lease
\$825 Down Payment
\$198 1st Month Payment
\$225 Security Deposit
\$1,248 Due at Lease Signing

Malibu®

- Up To 100,000 Miles Before First Scheduled Spark Plug Replacement*
- Features People Want For Less Than Camry, Accord And Altima††

\$219 a month*

36-Month Lease
\$1,275 Down Payment
\$219 1st Month Payment
\$250 Security Deposit
\$1,744 Due at Lease Signing

(TAX, TITLE, LICENSE AND REGISTRATION ARE EXTRA.)

See your local Chevy™ Dealer today!



*Blazer payments based on 1999 Chevrolet 4-door, 4WD Blazer with MSRP of \$28,295; 36 monthly payments total \$10,764. Tracker payments based on 1999 Chevrolet 4-door, 4WD Tracker with MSRP of \$17,230; 36 monthly payments total \$7,164. Cavalier payments based on 1999 Chevrolet Cavalier Coupe and MSRP of \$13,871; 36 monthly payments total \$7,128. Malibu payments based on 1999 Chevrolet Malibu and MSRP of \$17,455; 36 monthly payments total \$7,884. Option to purchase at lease end and for an amount to be determined at lease signing. GMAC must approve lease. You must take retail delivery from participating dealer stock by 7/1/99. Mileage charge of \$.20 per mile over 36,000 miles. Lessee pays for excess wear. Lessee is responsible for early termination of the lease. Payments may be higher in some states. Not available with customer cash offers.

†Based on Ward's Automotive Reports 1999 U.S. sales calendar year to date.

††MSRP comparison based on comparably equipped Malibu, Camry CE, Accord LX, and Altima XE.

*Maintenance needs vary with different uses and driving conditions. See the owner's manual for more information.

©1999 GM Corp. Buckle up, America!