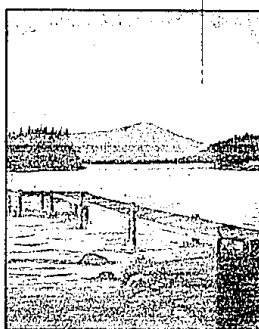
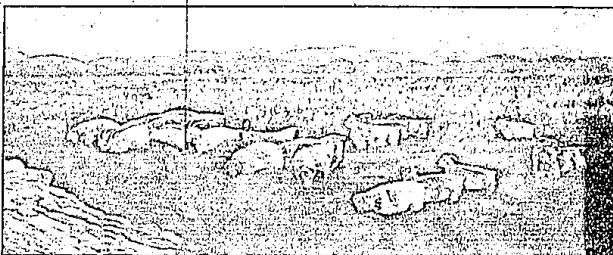
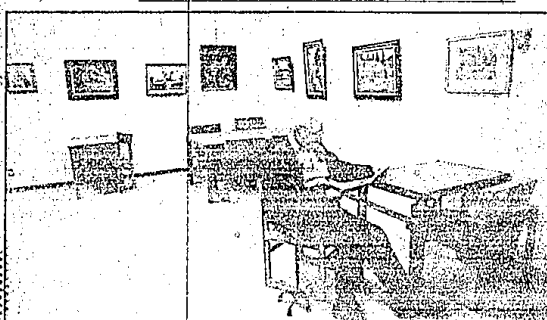


## Senior art exhibit at downtown library



STAFF PHOTOS BY BILL BAZELMAN  
**Respite:** Mark Reiter, left, reads the paper surrounded by the senior art exhibit in the downtown Farmington Library. Above, *Quiet Harbor* by Doris Foreman. At left, *I know my sheep and they know me* by Joan Lange. Some 16 pieces are on display through the month of June, oil paintings and multi-media. The class meets Wednesday afternoons at the Mercy Center in Farmington Hills.

## Swim club still open

There's still time for swimmers of all ages to join the Jewish Community Center's summer swim club.

Members are entitled to unlimited use of any of the four Jewish Center pools at both the Morris building, 15110 W. 10 Mile, Oak Park, and at the Kahn Center in West Bloomfield, at 6600 W. Maple.

Rates are available in all categories: family swim, health club (35-up), and young adult health club (25-34). Membership is good all summer - through Labor Day. Family and general swim club membership also includes the use of the tracks, gym, Olympic

weight room and tennis, racquetball and volleyball courts.

Several improvements have been made to the main outdoor pool at the Kahn building, including new gutter, filtration and heating systems. The new gutter system provides poolside seating.

Special passes will be issued to three-month summer swim and health club members.

Fees are \$375 for family swim club; \$350 health club membership (age 35 and up) and \$250 young adult health club (25-34). Other membership options are available.

Call 967-4030 or 661-7621.

## Miss Farmington heads for state competition

Erin Cogswell, the reigning Miss Farmington/Oakland County, leaves Saturday for the Miss Michigan pageant in Muskegon.

The pageant runs June 17, 18, and 19. Contestants are in rehearsal for the days leading up to competition.

"We have several former Miss Farmingtons at the state pageant," said Ginny Morris, Miss Farmington/Oakland County pageant organizer. "Kelly Garver, a former Miss Farmington, Miss Michigan and

Miss America runner-up, is the pageant host.

The current Miss Michigan, Laura Welling, is a former Farmington contestant. Dorie Mankowski, Audrie Chernaikas, Annette Hohl and Amanda Wasyly are now running from other areas of the state.

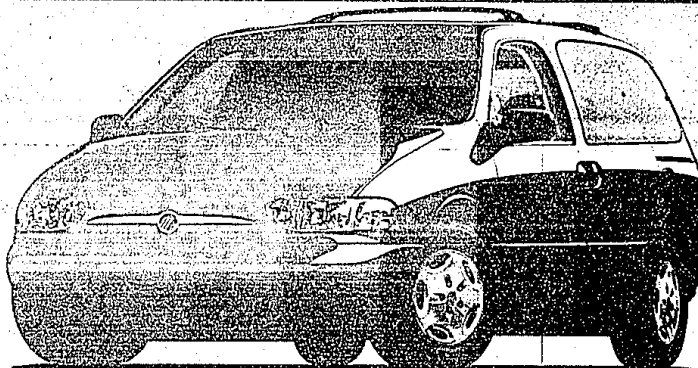
Morris said that Erin Cogswell would appreciate good wishes from the citizens of Farmington. She can be reached at Jewell Hall, Baker College, Muskegon MI 49441.

# Get the most...for the lease.

## \$259\*

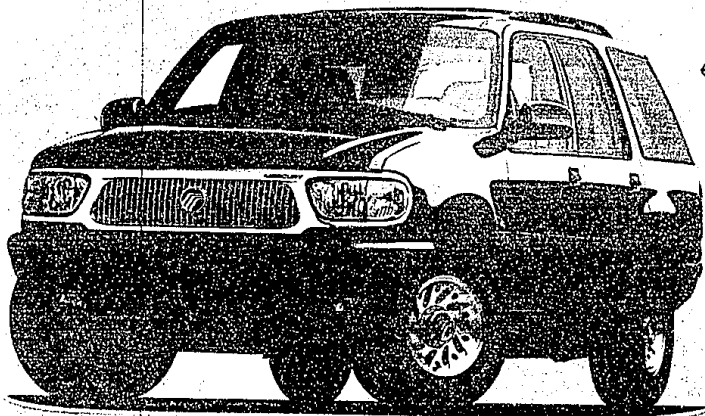
PER MONTH  
FOR 36 MONTHS

36-Month/36,000-Mile Red Carpet Lease  
 Capitalized Cost .....\$21,785  
 Down Payment .....\$2,050  
 Refundable Security Cash .....\$275  
 First Month's Payment .....\$259  
 Cash Due at Signing .....\$2,584  
 \$15/mile over 36,000 miles



## 1999 MERCURY VILLAGER

FEATURES INCLUDE: 3.3L SOHC V-6 engine • Front-wheel drive • Second Generation dual air bags\*\* • In-Track™ rear sliding seat system • AM/FM stereo/cassette • 100,000-mile scheduled tune-up intervals\*\*\* • Power front windows and door locks



## 1999 MERCURY MOUNTAINEER

FEATURES INCLUDE: 5.0-liter OHV V-8 engine • Power windows and door locks • Second Generation dual air bags\*\* • 4-wheel disc anti-lock brakes • Speed control with tap-up/tap-down feature

## \$339\*

PER MONTH  
FOR 24 MONTHS

24-Month/24,000-Mile Red Carpet Lease  
 Capitalized Cost .....\$26,874  
 Down Payment .....\$2,600  
 Refundable Security Cash .....\$350  
 First Month's Payment .....\$339  
 Cash Due at Signing .....\$3,289  
 \$15/mile over 24,000 miles

Imagine yourself in a Mercury

www.lincolnm Mercury.com

LEASE PAYMENT SUBJECT TO DEALER PARTICIPATION. PAYMENT WILL VARY BASED ON ACTUAL DEALER CONTRIBUTION. \*1999 Mercury Mountaineer AWD MSRP \$30,245 and 1999 Mercury Villager MSRP \$22,995, assumes \$1,000 dealer contribution on Mercury Mountaineer and \$1,000 RCL cash on Mercury Villager. Excluding tax, title and license fees. Lease payment based on average capitalized cost of 92.16% of MSRP on Mercury Mountaineer and 94.74% of MSRP on Mercury Villager for leases purchased in the Detroit Region through 2/28/99. Residency restrictions apply. Dealer participation may vary. For special lease offers and RCL cash, take new retail delivery from dealer stock by 7/5/99. See dealer for details. \*\*Always wear your safety belt and secure children in the rear seat. \*\*\*Under normal driving conditions with routine filter/fluid changes.



Visit Your  
Metro Detroit  
Mercury Dealer

**ANN ARBOR**  
**Apollo**  
 2100 W. Stadium Rd.  
 Ann Arbor  
 (734) 668-6100

**DEARBORN**  
**Krug**  
 2131 Michigan Ave.  
 Dearborn  
 (313) 274-8800

**DETROIT**  
**Bob Maxey**  
 10000 Mack Ave.  
 Detroit  
 (313) 855-6000

**DETROIT**  
**Park Motor**  
 18000 Woodward Ave.  
 Detroit  
 (313) 869-5000

**FARMINGTON**  
**Jack Demmer**  
 3625 Grand River Ave.  
 Farmington  
 (248) 474-3170

**GARDEN CITY**  
**Stu Evans**  
 1500 Ford Rd.  
 Garden City  
 (313) 425-4300

**NOVI**  
**Varsity**  
 49151 Grand River  
 Novi  
 (248) 855-5000

**PLYMOUTH**  
**Hines Park**  
 4501 Ann Arbor Rd.  
 Plymouth  
 (1-800-350-MERC)

**ROCHESTER HILLS**  
**Crisman**  
 18550 E. Riverchase Rd.  
 Rochester Hills  
 (248) 652-4200

**ROSELAND**  
**Arnold**  
 25000 Grand  
 Roseland  
 (313) 445-6000

**ROYAL OAK**  
**Diamond**  
 221 North Main Street  
 Royal Oak  
 (248) 541-8800

**SOUTHFIELD**  
**Star**  
 24155 West 12 Mile Rd.  
 Southfield  
 (248) 374-4000

**SOUTHGATE**  
**Stu Evans**  
 16000 Fort Street  
 Southgate  
 (313) 285-8800

**STERLING HEIGHTS**  
**Crest**  
 16000 Fort Street  
 Sterling Heights  
 (313) 919-6000

**TROY**  
**Bob Borst**  
 1450 West Maple  
 Troy  
 (248) 611-6000

**WATERFORD**  
**Mel Farr**  
 4171 Highland Rd.  
 Waterford  
 (248) 681-9500

**YPSILANTI**  
**Seal**  
 3500 East Ypsilanti  
 Ypsilanti  
 (313) 482-7100

**ELGIN**  
**Mercury**