

Parade from page A1

Shriners, who dominated the two-hour parade — which began at the east end of Farmington by the Target store.

There were Shriner clowns, Shriner Keystone Kops, a Shriner precision motorcycle team, even a Shriner Oriental band, complete with gongs.

But non-Shriner participants also got into the parade act, such as the Barbara Hatch School of Dance. Members put on a twirling show at the intersection of Grand River-Farmington, in front of the reviewing stand.

Watching from the stand were Farmington Mayor Mary Bush and this year's parade emcee Jody Soronen, describing the action for viewers on cable Channel 12.

"It's fun, it's a really terrific community event supported by both Farmington and Farmington Hills," said Soronen, noting that she's emceed long enough to see kids grow up and bring their own children.

To that end, both cities were well-represented. Exemplifying that, Farmington Hills Police Chief Bill Dwyer and Farmington Public Safety Director Gary Goss drove next to each other in separate police cars.

Also, the loud horns and sirens of emergency fire trucks and ambulances pumped up the parade volume.

Sound apparently wasn't all that was on the scene.

Carleigh Flaherty, president of the Farmington/Farmington Hills Chamber of Commerce, said parade attendance "definitely was up" and that many people who came out for the spectacle stuck around to browse and buy from booths.

And the winners are...

Also out for the parade were several volunteer judges, who selected the top bands, floats and performers.

The judges picked the Farmington Public School Founders Festival Band — comprised of students from Farmington, Harrison and North high schools — as the parade's top band.

Capturing the first-place precision drill award was the Farmington Pom Pon Squad, while Gill Elementary School's "Boaring Through 176 Years" float was deemed the best of that category.

In addition to the replica of downtown, the Gill entry featured another highlight. Rising above it was a cluster of small balloons, enclosed by mesh, thus resembling a helium balloon. Gill also won the Queen's Trophy.

Botsford Hospital was another double winner, taking honors for the best commercial float category and President's Award.

The judges included Joanna Maliszewski, editor of the Farmington Observer; Elena Carr, formerly of the Farmington/Farmington Hills Chamber of Commerce; and John DePotter of the Northwest Gazette.

One of the other highlights was an entry for the Gov. Warner Mansion — Home of Farmington History.

Waving from inside the white, horse-drawn carriage were Dick Corvelli and Carol Brichford, wearing early 1900s-period costumes, depicting Gov. Fred Warner and his family.

"Why we did it was we want to draw attention to the Warner Mansion," said Farmington City Council member James Mitchell, who is on the Warner Mansion Development Committee. "It is one of the



STAFF PHOTO BY DILL BARNES

In rhythm: The Farmington Public School Founders festival Band took a prize in the judging portion of Saturday's parade. Band members from Farmington, North, and Harrison high schools participate in the parade band.

treats we want people to see.

"We want them to know about it and to invite them to spend some time there."

Those who made their way down Grand River to the mansion Saturday were able to check out some beautiful antique cars. Among cars on display were a 1923 Model T and 1928 Model A, both owned by Bob Rebovy of the Farmington Hills Fire Department.

Corvelli, also on the committee, later said he was worried about the wind blowing away the black beaver hat he was wearing during the parade.

Rebovy, by the way, walked in the parade with his trusty family dog, Lucky.

"Great parade, huh?" he said, with a smile to folks standing on the sidewalk.

And the winners of the Founders Festival Parade are:

The following are winners from the Farmington Area Founders Festival:

First Place Band — Farmington Public School Founders Festival Band

Second Place Band — Kiwanis

First Place Precision Drill — Farmington Pom Pon Squad

Second Place Precision Drill — Farmington Rockets

Third Place Precision Drill — Farmington High Cheerleader Team

First Place Organizational Float — Gill Elementary School

Second Place Organizational Float — City of Farmington Special Services

Third Place Organizational Float — Harvest Temple Worship Center

First Place Commercial Float — Botsford Hospital

President's Award — Botsford Hospital

Queen's Trophy — Gill Elementary School

CASH

Waiting For You At

Golden Jewelry

Bring In All Of Your Old Diamonds & Gold

Rolex Watches Wanted

\$1.99 Batteries for Most Watches

Excluding Ultimeo • W/Coupon • Limit One

33403 W. 7 Mile Rd. Livonia • (248) 442-7878

Summer Clearance

Last Call • Final Markdowns

Mens, Womens, Childrens Table Shoes

\$5.00 • \$10.00 • \$15.00

SAVE UP TO 75% Values to \$75.00

577 Prs.

Greg

Orchard Mall

Orchard Lake Rd. • N. of Maple

W. Bloomfield • 851-8586

"Serving the Community for over 40 years"

SHOES

SHANGRI-LA
GOURMET CHINESE RESTAURANT
Featuring Authentic HONG KONG Style Cooking
Wonderful Traditional Favorites...Superb Variety of Dining Specialties
• LIVE FISH, LOBSTER, and CRAB in our tanks. COOKED TO ORDER
• SAT. SUN. DIM YUM (10 a.m. - 3 p.m.)
• LUNCH SPECIALS 11 a.m. - 3 p.m.
• DARTY OUTS AVAILABLE
• HOURS: 11 a.m. - 11 p.m.
• 1400 ORCHARD LAKE ROAD
• 100' THRUWAY
• 4800-4800

McLaughlin's

THIRTY SEVENTH ANNUAL

Heart's Desire
HOME FURNISHINGS SALE

Save 20% to 50% Storewide!

Plus, enter to win your "Heart's Desire™"

which is any 1 item you desire!

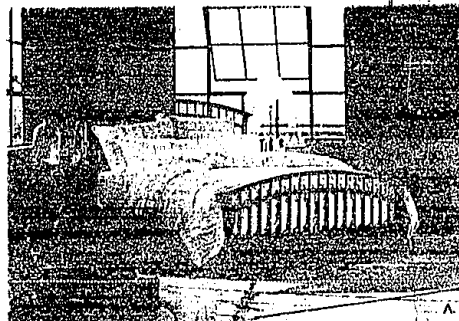
See store for details.

If you've had your heart set on that special living room, dining room, or bedroom, it's time to buy it now at our special once a year "Heart's Desire" Sale! During this annual summer event, we offer special additional storewide savings so you can have the home furnishings you desire at the best savings ever! Plus...choose your "Heart's Desire" in furniture and enter to win that item!

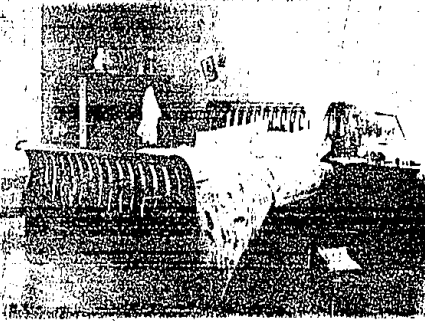
We pay your sales tax on all Thomasville!
6 months same as cash on all purchases!



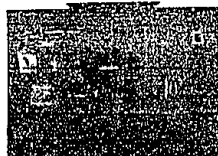
Dining Rooms



Upholstery



Leather



Entertainment Centers



Home Office

A. Rindler Bedroom. Maple solids, highly figured Pennsylvania black cherry and other select hardwoods are used for the beautiful natural grain patterns and strength of these favored woods. A soft New Horizon finish highlights the natural cherry wood with gold tones. 3 pieces as shown (queen size bed) mat. \$2190 Sale \$1739

B. Madison County Bedroom. Oak solids and other selected hardwoods. A rich, deep finish that accentuates the amber tones of oak. Knobs featuring a burnished, antique finish and intricate line pattern. 3 pieces as shown (queen size bed) mat. \$3795 Sale \$2209

C. Monticue Bedroom. Cherry veneers, maple solids and selected hardwoods stained with a subtle low-sheen cherry finish. Stylish and elegant, with understated simplicity inspired by the style of Louis Philippe. 4 pieces as shown (queen size bed) mat. \$5310 Sale \$3104

McLaughlin's
Southgate
HOME FURNISHING DESIGNS

724.285.5454

14405 Dix, Southgate

McLaughlin's
Thomasville
HOME FURNISHINGS OF NOVI

248.344.2551

42200 Grand River, Novi

Monday, Thursday & Friday 10-9 | Tuesday, Wednesday & Saturday 10-5 | Sunday 12-4