

Noteworthy

Gallery exhibits, art shows, classical concerts

MAKING CONTACT: Please submit items for publication to Frank Provenzano, The Eccentric Newspapers, 805 E. Maple, Birmingham, MI 48009 or fax (248) 644-1314

ART GIFTS FOR HOLIDAYS

DETROIT ARTIST MARKET
Holidaze Sale, featuring work of 170 artists. Through Dec. 23, 300 River Place, Ste. 1650, Detroit; (313) 393-1770.

HOLIDAY GIFTS AT PAINT CREEK
Holiday Gift Gallery, Nov. 23-Dec. 23, Main Gallery, Paint Creek Center for the Arts, 407 Pine Street, Rochester; (248) 651-4110.

ARTS & CRAFTS

DUNHAM-RAY VFW
Dunham-Ray VFW Ladies Auxiliary Annual Arts & Crafts Show, 10 a.m. to 4 p.m. Sunday, Nov. 15, 24222 W. 9 Mile Road, Southfield; (248) 357-0138.

N. FTON BANO & BOOSTERS
8th annual winter arts & crafts show sponsored by the North Farmington High School Band & Orchestra, 9 a.m.-5 p.m. Saturday, Nov. 21, North Farmington High School, 32900 W. 13 Mile Road, Farmington Hills; (248) 553-6699.

AUDITIONS / CALL FOR ARTISTS

CRAFTERS WANTED
"Seasonal Sensations," the annual Senior Fair and Craft Show at Southfield Christian School. Juried show Dec. 5, 1998. Call (248) 375-0693. Crafters wanted for year-round show starting Dec. 12, call (313) 897-2463.

HOLIDAY MARKETPLACE
Creative Arts Center, N. Oakland Road, invites local artists to participate in its annual "Holiday Marketplace Gift Shop," through Jan. 2, 1999. Fee: \$15. 47 Williams Street, Pontiac; (248) 333-7849.

JAZZ & SPIRIT DANCE THEATRE
Auditions for modern and jazz dancers, 18 years old and up, 6:30-8 p.m. Monday, Nov. 16, Northwest Activities Center, 18100 Meyers, between Curtis and McNichols, Detroit; (313) 862-0966.

PAINT CREEK CENTER
Seeks entries for national juried all-media exhibit, Jan. 22. Deadline: Friday, Nov. 20. For information, (248) 651-4110.

BENEFITS

ROCHESTER COMMUNITY HOUSE
An evening of music and gourmet dining 6 p.m. Sunday, Nov. 15. Rochester Community House, 816 Ludlow Avenue, Rochester. Proceeds to the Rochester Community House. Tickets: \$40/person; (248) 651-0622.

FOR EMU PEASE AUDITORIUM
Benefit Concert by "Measure for Measure," an 80-voice community chorus to support the organ restoration in Eastern Michigan University's Pease Auditorium, 4 p.m. Sunday, Nov. 15. EMU campus, Ypsilanti; (734) 487-0482.

CHOIR

DETROIT CONCERT CHOIR
Season-opening concert 4 p.m. Sunday, Nov. 15, Jefferson Avenue Presbyterian Church, 8625 E. Jefferson Avenue, Detroit; (313) 822-3456.

CLASSES & WORKSHOPS

BIRMINGHAM-BLOOMFIELD ART CENTER

Offers a range of art classes, 1516 S. Cranbrook Road, Birmingham; call (248) 644-0866 for more information.

GEIGER CLASSIC BALLET ACADEMY

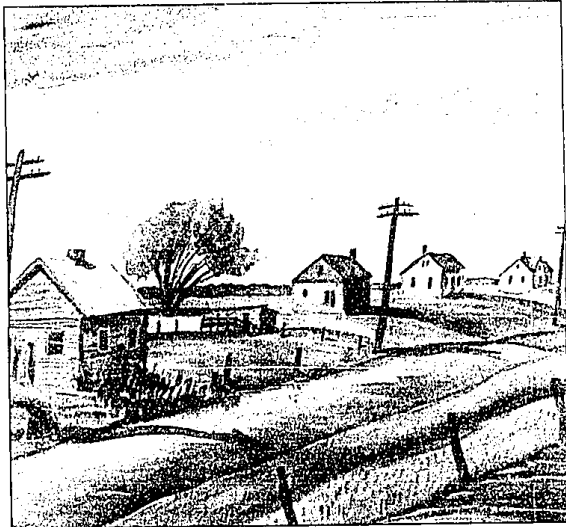
Newly refurbished dance studio - opening for new enrollment, 782 Denison Court, Bloomfield Hills; (248) 334-1300.

KAMMUELLER DANCE CLASSES

Advanced and professional classical ballet program, 9:30 a.m. Monday-Friday; intermediate level Tuesday, Thursday & Fridays at 11:30 a.m. 5526 W. Drake, West Bloomfield; (248) 932-8099.

LONGACRE HOUSE - ART CLASSES

Range of art classes, including watercolor, drawing and collecting. Private voice lessons from instructor Bessie Koursaris, all skill and age levels; by appointment between 6-9 p.m. Wednesdays through Dec. 16;



Rural escape: Watercolors from the 1930s & '40s of Norman MacLeish on exhibit through Nov. 28 at the David Klein Gallery, 163 Townsend, Birmingham; (248) 433-3700.

fee: \$210. 24705 Farmington Road, between 10 Mile and 11 Mile roads. To register, (248) 477-8404.

PLYMOUTH COMMUNITY ARTS COUNCIL

Life model drawing class, 9:30 a.m.-noon, Tuesday, Nov. 17. Joanne Winkelman Hulce Center for the Arts, 774 N. Sheldon Road, Plymouth; (734) 416-4ART.

CLASSICAL, POP & JAZZ

ROCHESTER SYMPHONY

"An Opera Martini," featuring guest artist Manfred Drelllich in a program of Verdi, Rossini, Puccini and Mozart 3 p.m. Sunday, Nov. 15, Varner Hall, Recital Hall, Oakland University. Tickets \$15, call (248) 651-4181 for ticket information, up to 5 p.m. Friday, Nov. 13. Friday's concert is nearly sold-out, tickets still available for the Sunday concert.

BIRMINGHAM-BLOOMFIELD SYMPHONY

"Great Music from the Silver Screen & TV," 7:30 p.m. Sunday, Nov. 15. Conducted by Charles Greenwell. Temple Beth El, 14 Mile & Telegraph roads, Bloomfield Hills; (248) 645-2276.

CHRIST CHURCH CRANBROOK

"Vespers in the Taizé Tradition," 4 p.m. Sunday, Nov. 15, corner of Lone Pine and Cranbrook Roads, Bloomfield Hills; (248) 644-5210, ext. 39.

JAZZ VESPERS

Keller-Kocher Quartet, 6 p.m. Sunday, Nov. 15, First Baptist Church, corner of Willits and Bates, Birmingham; (248) 644-0550.

SEPHARDIC SONG

The Gerard Edery Ensemble 8 p.m. Saturday, Nov. 21, Birmingham Temple, 28611 W. 12 Mile Road; (248) 788-9338.

MADONNA UNIVERSITY

Music students present "First Annual Celebration of Music," 3 p.m. Sunday, Nov. 22, Kresge Hall, 36600 Schoolcraft, Livonia; (734) 432-5737.

TEMPLE ISRAEL

"Alhambra," the internationally acclaimed music ensemble, 3:30 p.m. Sunday, Nov. 22. Sponsored by the Cahn-Haddow Center for Judaic Studies at Wayne State University. For information, (248) 661-5700.

ZAMIR CHORALE

Annual fall concert, featuring songs concerning the relationship between parent and child, 4 p.m. Sunday, Nov. 22, Janice Charach Epstein Gallery, Jewish Community Center, 6600 Maple Road, West Bloomfield; (248) 788-0017.

DETROIT SYMPHONY ORCHESTRA

Aethra Franklin makes her first appearance with the DSO, 8:30 p.m. Friday & Saturday, Nov. 27-28, and 3 p.m. Sunday, Nov. 29, 3711 Woodward Avenue, Detroit; (313) 576-5111.

DANCE

WSU DANCE CO.
"Journey," 45th annual dance concert for young folks, 11 a.m. & 1 p.m. Saturday, Nov. 21, Community Arts Auditorium, Wayne State University campus, Detroit; (313) 577-4273.

HOLIDAY EXHIBITS

PEWABIC POTTERY

Annual Holiday Invitational Show, "Earthy Treasures," continues through Thursday, Dec. 31, 10125 E. Jefferson Avenue, Detroit; (313) 822-0954.

LECTURES

BROWN BAG SERIES

"The Third Dimension: Conservation of Sculpture and Decorative Arts" by conservationist Marianne Weldon, noon Thursday, Nov. 19, Information Technology Auditorium, 1200 N. Telegraph Road, Pontiac; (248) 858-0415.

BAC

Robert Wilbert, professor emeritus at Wayne State, 7:30 p.m. Tuesday, Nov. 24, 1516 S. Cranbrook Road; (248) 644-0866.

VOLUNTEERS

FAR CONSERVATORY

Needs volunteers to assist with leisure, creative and therapeutic arts programs for infants through adults with disabilities, weekdays, evenings, Saturdays. Call (248) 646-3347.

LIVONIA HISTORICAL COMMISSION

Greenmead Historic Village seeks volunteers to assist in school tours, Sunday tours, special events, special projects and gardening. Open May-October & December. Eight Mile at Newburg Roads, Livonia; (734) 477-7375.

MOTOR CITY BRASS BAND

Seeks volunteers to help with non-performing activities. Web site: mcbb.org, or contact MCCB, Southfield Centre for the Arts, 24350 Southfield Road; (248) 349-0376.

MUSEUM DOCENTS

Volunteers to conduct school tours for grades 3-5, special pre-school programs and tours to the general public and adult groups. Volunteers receive one-and-a-half days of class per week from

September-June. For information, (313) 833-9178.

MUSEUMS

DETROIT INSTITUTE OF ARTS

Opens Nov. 21 - "Ancient Glass from the Holy Land," runs through Jan. 31, 5200 Woodward Avenue, Detroit; (313) 833-7900.

MUSEUM OF AFRICAN AMERICAN HISTORY

Through Jan. 3 - "The Buffalo Soldier," a historical documentary of the African-American soldier into the U.S. Army during 1866-1912, 315 E. Warren Avenue, Detroit; (313) 494-5800.

EXHIBIT (OPENING)

PARK WEST GALLERY

Nov. 15 - Peter Max and Sugar Roy Leonard will be on hand 1-3 p.m. for the opening of Max's newest series featuring the legendary boxer. A portion of the sales benefits the Michigan Parkinson Foundation. Through Nov. 27, 29469 Northwestern Highway, Southfield; (248) 354-2343.

HALSTED GALLERY

Nov. 17 - Photographs of Michael Kenne and Camille Sotoyuga. Through Dec. 31, 560 N. Old Woodward, Birmingham; 858-0415.

REIKO M.

Nov. 21 - "Oh, You Beautiful Doll!" mannequin photographs of Elaine Redmond, 734 S. Washington, Royal Oak; (248) 543-5433.

MEADOW BROOK ART GALLERY

Nov. 20 - "Private Nature," watercolors and pencil drawings by Karen Anne Klein. Through Dec. 27, 208 Wilson Hall, Oakland University campus, Rochester; (248) 370-3005.

BARCLAY GALLERY

Nov. 21 - "In the Shadow of Mount Fuji," a collection of Japanese prints, 580 N. Old Woodward, Birmingham; (248) 645-5430.

PAINT CREEK CENTER FOR THE ARTS

Nov. 23 - Jack Reeve: Pedestrian Micro-Landscapes. Through Dec. 23, 407 Pine Street, Rochester; (248) 651-4110.

GALLERY EXHIBITS (ON-GOING)

FARMINGTON HILLS CITY HALL

Through Nov. 15 - The paintings of Howard Weingarden, 31555 Eleven Mile Road, Farmington Hills; (248) 473-9583.

MEADOW BROOK HALL COLLECTION

Through Nov. 15 - Tiffany;

Essence of Light," Meadow Brook Art Gallery, Wilson Hall, Oakland University, Rochester; (248) 370-3140.

C.R.A.I.G. GALLERY

Through Nov. 16 - "The Extension of Reality," an exhibit of contemporary realism, featuring Laura Anderson, Stephen Ciole, Christopher Melikian, Burke Paterson, Michael Zigmund, 162 N. Old Woodward, Birmingham; (248) 647-3688.

FARMINGTON ARTISTS CLUB

Through Nov. 17 - Farmington Artists Club Fall Exhibit and Sale. Spicer House in Heritage Park, 24915 Farmington Road; (248) 646-3707.

POSNER GALLERY

Through Nov. 17 - "Recent Form," work of Ricki Berlin and Barbara Coburn, 523 N. Old Woodward, Birmingham; (248) 647-2552.

PALETTE & BRUSH CLUB

Through Nov. 19 - Juried exhibit by members of Palette & Brush Club. Southfield Centre for the Arts, 24350 Southfield Road; (248) 424-9022.

BERKOWITZ GALLERY/U-M

DEARBORN

Through Nov. 20 - Works of Ford Motor Company Artists. Reception 5 p.m. Friday, Oct. 9. U-M Dearborn, 4901 Evergreen Road, #1165 AB, Dearborn; (313) 593-5058.

BIDDLE GALLERY

Through Nov. 21 - Paintings by Chun Hui Pak, Beatrice McSorley Dejong, and sculptures by Joyce Gottlieb, 2840 Biddle, Wyandotte; (734) 281-4779.

THE ANDERSON GALLERY

Through Nov. 28 - New works by Sonya Clark, 7 N. Saginaw, Pontiac; (248) 335-4611.

DAVID KLEIN GALLERY

Through Nov. 28 - Watercolors from the 1930s & 40s of Norman MacLeish, 163 Townsend, Birmingham; (248) 433-3700.

JOHANSON CHARLES GALLERY

Through Nov. 28 - "Exposed," exhibit of sculpture, collages and jewelry by Sharon Bida, 1345 Division St., Eastern Market, Detroit; (313) 567-8638.

LAWRENCE STREET GALLERY

Through Nov. 28 - "Portraits: A unique blend of music, art and poetry by Blue Heron Consortium," 6 N. Saginaw Street, Pontiac; (248) 334-6716.

MASTERPIECE GALLERY

Through Nov. 28 - Mixed-media paintings and sculptures by CRAI, a.k.a. John Matos. Opening reception 7:30 p.m. Friday, Oct. 23, 137 W. Maple, Birmingham; (248) 594-9470.

NETWORK

Through Nov. 28 - "Futuretecture," an exhibit of 3D design, furnishings and video, 6 N. Saginaw, Pontiac; (248) 334-3911.

SCARAB CLUB

Through Nov. 28 - 29th annual Michigan Photography Exhibit, 217 Farnsworth, Detroit; (313) 831-1250.

BOOK BEAT

Through Nov. 30 - "Hollywood Dressed and Undressed" by

Sandy Schreier, 26010 Greenfield Road, Southfield; (248) 968-1190.

LIVONIA ARTS COMMISSION

Through Nov. 30 - Santa Claus figurines from the collection of Glona Hull of Plymouth; mixed-media exhibit by local arts teachers. Livonia Civic Center Library, 32777 Five Mile Road; (734) 466-2490.

PLYMOUTH ARTS COUNCIL

Through Nov. 30 - "Something Natural," multi-media works of Judith Braun and R. Graham, 774 N. Sheldon Road, Plymouth; (734) 416-4278.

GALLERIA

Through Dec. 2 - "The Ink Sings! The Brush Dances!" an exhibit of Chinese Brush Painting, Oakland County Galleria, second floor, Executive Office Building, 1200 N. Telegraph Road, Pontiac; (248) 858-0415.

GALLERIE BLU

Through Dec. 5 - The surrealist oil paintings and bronze sculptures of Lui Liu, 568 N. Old Woodward, Birmingham; (248) 594-0472.

UZELAC GALLERY

Through Dec. 5 - Glass sculptures by Laurel Fyle, 7 N. Saginaw, Pontiac; (248) 332-5257.

LEMBERG GALLERY

Through Dec. 5 - "The Elements of Pigment," works by Suzanne Caporael, 538 N. Old Woodward, Birmingham; (248) 642-6623.

SYBARIS GALLERY

Through Dec. 5 - Ceramics of Philip Cornelius, metals of Myra Minich Gray, and jewelry of Susan King, 202 E. Third Street, Royal Oak; (248) 544-3388.

DAY OF THE DEAD EXHIBIT

Through Dec. 18 - Casa de Unidad Cultural Arts and Media Center presents, "Remembering Detroit," by Alma Rosa Villalobos, 1920 Scotten, Detroit; (313) 843-9598.

BBAC

Through Dec. 23 - Wall drawing by Sol LeWitt, "Bands of Lines," Robinson Gallery, 1516 Cranbrook Road, Birmingham; (248) 644-0866.

ZEITGEIST GALLERY

Through Dec. 31 - "Friends of Jacques Shaw," an exhibit and performance, 2661 Michigan Avenue, Detroit; (313) 965-9192.

REVOLUTION

Through Dec. 31 - "Recovering Lost Fictions: Caravaggio's Musicians," a project by Kathleen Gilje and Joseph Grigely; and, "Text (Rheography Series)" by Tony Heburn, 23257 Woodward Avenue, Ferndale; (248) 541-3444.

HILBERY GALLERY

Through Jan. 9 - Painting, sculpture, works on paper by Yayoi Kusama, 555 S. Old Woodward, Birmingham; (248) 642-8250.

Glazed-Eyed: "Oh, You Beautiful Doll!" the mannequin photographs of Elaine Redmond are on exhibit opens Thursday at Reiko M., 734 S. Washington, Royal Oak; (248) 543-5433.

