

## Author's work focuses on pontiff

Dr. Paul Radzilowski of Farmington, assistant professor of history at St. Mary's College at Orchard Lake, has authored a series of articles about church leaders and institutions which have played significant roles in the life and pontificate of John Paul II in a supplement of the New Catholic Encyclopedia devoted to the pope.

Entitled "Jubilee Volume: The Wojtyla Years" is published by the Gale Group in association with the Catholic University of America.

Radzilowski's articles are contained in a section called "People and Places, Institutions and Events." They include

■ Bishop Stanislaw Dziwisz, the personal secretary to the pope since his election in 1978 and editor of the Polish versions of all his papal documents.

■ Cardinal Jozef Glemp, successor to Cardinal Stefan Wyszyński of the Primate of Poland.

■ Catholic University of Lublin, where John Paul II as Karol Wojtyla was a faculty member for 25 years.

■ Cardinal Franciszek Macharski, consecrated by John Paul II as his successor as archbishop of Krakow.

■ Cardinal Wladyslaw Rubin, who died in 1980, appointed by Cardinal Wyszyński as the world-wide emissary to Poles living abroad.



Dr. Paul Radzilowski

■ Cardinal Adam Stefan Sapieha, who ordained Karol Wojtyla to the priesthood and acted as his mentor both when the future pope was a seminarian and a young priest. He died in 1951.

■ Rev. Jozef Tischner, a philosophy student of Karol Wojtyla at the Jagiellonian University, who, in the early 1980s, organized the first of biennial seminars that provided John Paul II an opportunity for conversations with intellectuals and academics in different disciplines. He died in June 2000.

■ Cardinal Stefan Wyszyński, the Primate of Poland, who guided the Polish church through the difficult years when Poland was subjected to intense Stalinization. He died in 1981. His case for beatification was begun eight years later.

Radzilowski holds a bachelor's degree in history from the University of Minnesota and a master's degree and doctorate from the University of Southern California.

## Prom gala kickoff Saturday

From season may mean hours of shopping, hair appointments, dinner and limo reservations, but to hundreds of Oakland County teens involved in Prom Gala 2000, it will mean hours of rehearsal and education sponsored by Healthy People, Healthy Oakland and Mothers Against Drunk Driving.

From Gala provides students with an alternate lifestyle of zero tolerance - free from alcohol, drug and tobacco use.

The program begins 6:30 p.m. Saturday, Jan. 6, at the Waterford Oaks County Parks Activity Center, 2800 Watkins Lake Road in Waterford.

All Oakland County high school students willing to consent to a drug- and alcohol-free prom and graduation season are invited to attend. Students at

the Prom Gala kickoff will learn about the program that combines staging a spectacular fashion/variety show with learning about the realities of life with alcohol, drugs and tobacco. A mini prom fashion show, pizza party and DJ music will all be a part of the prom gala kickoff event. Interested teens need to attend the kickoff event in order to register for the program.

Participants of the program will begin rehearsals in January in preparation to the fashion/variety show that will take place at Summit Place and Oakland Mall in March 2001. Students involved in Prom Gala 2001 are awarded for their efforts through numerous parties and a college scholarship program. Call Michelle Compton at MADD: (248) 623-6233.

## FYC meets tonight in Hills

The Farmington Hills/Farmington Commission on Children, Youth and Families will meet at 6:30 p.m. tonight in Farmington Hills city council chambers.

Topics include old business: a report on commemorative citation plaques and a status report on value goals, and discussion on a proposed retreat.

## FARMINGTON BELIEFS AND VALUES

### MOMS IN TOUCH INTERNATIONAL

Would you like to make a difference in the lives of your children as well as the school they attend?

Moms In Touch International is an interdenominational, non-profit organization where two or more moms meet together for one hour each week to pray for their children and their schools. If you would like to know more about this life-changing organization, come to the Moms In Touch International on Thursday, January 18, 2001, from 7 to 9 p.m., at Our Lady of Sorrows Catholic Church, 23815 Power Road, Farmington, in the Church Hall North.

For more information, call Mary at (248) 473-0499 or Kathie at (248) 737-0062. If you are not praying for your children, who is?

### ADAT SHALOM

Adat Shalom Synagogue is at 29901 Middlebelt Road in Farmington Hills. Phone 853-6100.

Clergy includes Daniel Novins, rabbi; Herbert Yoskowitz, rabbi; Jay Strear, rabbi; Ely Spectro, rabbi emeritus; Howard Glantz, cantor; and Larry Vieder, cantor emeritus.

Services Friday at 5 p.m. Saturday at 9 a.m. and 5 p.m. Weekdays at 7:30 a.m. and 5 p.m. and Sundays at 8:30 a.m. Bat Mitzvah of Ilyssa Tackel, daughter of Lauren and Jeffrey Tackel.

### NARDIN PARK UNITED METHODIST

Nardin Park United Methodist Church is on W. 11 Mile Road,

just west of Middlebelt in Farmington Hills. Child care and nursery are provided. For more information, call 478-8860.

### FARMINGTON AGLOW

Aglow International, Farmington Lighthouse for Women, will meet Monday, Jan. 8. Doors open at 6:30 p.m. Dinner served promptly at 7 p.m. at the Best Western Hotel at 31525 W. Twelve Mile Road, in Farmington Hills, at the corner of Orchard Lake Road. Polly Ealey will be the speaker. Cost is \$10.50 per person for dinner. Reservations for dinner can be made by calling Linda Boone at 478-1053. The meeting is free.

### FARMINGTON UNITARIAN

### CHURCH

"New Year's Burning Ceremony." Sunday, Jan. 7, Universalist Unitarian Church of Farmington. Ever want to burn up the worst of the last year and leave its ashes behind you as you enter the new year? On this first Sunday of the new year, Rev. Bob Renjilian will lead us in such a symbolic ritual. Services, Sunday school, and nursery at 9 and 11 a.m. The church is at 25301 Haled Rd. (north of Grand River) For more information, call 248-478-7272

or www.uufarmington.org To have your church or synagogue worship service or special event listed in this column, send the information at least one week in advance to *Beliefs & Values*, c/o Farmington Observer, 33411 Grand River, Farmington, MI 48335 or e-mail your information to mrdrique@e.homecom.net

# Thomasville Save 50% on All Thomasville Bedding

## Classic-Firm Queen Set

	Reg.	Sale	Instant Rebate	Your Price
10 Year Non-Prorated Warranty				
Twin Set:	\$600	\$299	-\$50	\$249
Full Set:	\$1000	\$499	-\$50	\$449
Queen Set:	\$1100	\$549	-\$50	\$499
King Set:	\$1200	\$599	-\$50	\$549

## Serenity Queen Set

	Reg.	Sale	Instant Rebate	Your Price
15 Year Non-Prorated Warranty				
Twin Set:	\$1000	\$499	-\$50	\$449
Full Set:	\$1200	\$599	-\$50	\$549
Queen Set:	\$1400	\$699	-\$50	\$649
King Set:	\$1800	\$899	-\$50	\$849

## Body Brocer Queen Set

	Reg.	Sale	Instant Rebate	Your Price
15 Year Non-Prorated Warranty				
Twin Set:	\$1200	\$599	-\$50	\$549
Full Set:	\$1800	\$799	-\$50	\$749
Queen Set:	\$1600	\$799	-\$50	\$749
King Set:	\$2200	\$1099	-\$50	\$1049

## Marquis Queen Set

	Reg.	Sale	Instant Rebate	Your Price
20 Year Non-Prorated Warranty				
Twin Set:	\$1600	\$699	-\$50	\$649
Full Set:	\$1800	\$799	-\$50	\$749
Queen Set:	\$1800	\$899	-\$50	\$849
King Set:	\$2400	\$1199	-\$50	\$1149

## Renaissance Queen Set

	Reg.	Sale	Instant Rebate	Your Price
20 Year Non-Prorated Warranty				
Twin Set:	\$1800	\$799	-\$50	\$749
Full Set:	\$1800	\$899	-\$50	\$849
Queen Set:	\$2000	\$999	-\$50	\$949
King Set:	\$2600	\$1299	-\$50	\$1249

## River Roads Queen Set

	Reg.	Sale	Instant Rebate	Your Price
20 Year Non-Prorated Warranty				
Twin Set:	\$1800	\$899	-\$50	\$849
Full Set:	\$2000	\$999	-\$50	\$949
Queen Set:	\$2400	\$1199	-\$50	\$1149
King Set:	\$3000	\$1499	-\$50	\$1449

## 6 Reasons why a Thomasville mattress is your best investment!

1. Handcrafted with integrity to perform better for years to come.
2. Coil-on-Coil construction in which each mattress coil is supported by a coil in the box spring or 8-way hand-tied coil box spring.
3. 7-Turn Comfort Tech coil design for comfort and deep down support.
4. Premium quality cotton cushioning, high resilient foam, and luxurious DuPont Dacron to cushion your sleep.
5. 25 slats in the box spring to support his quality mattress set.
6. 20-year Non-Prorated Warranty assuring you many years of healthful, quality sleep.

**Thomasville**  
HOME FURNISHINGS.

**BLOOMFIELD HILLS**  
www.thomasvillebloomfield.com  
4080 Telegraph Rd.  
Phone: (248) 644-0800

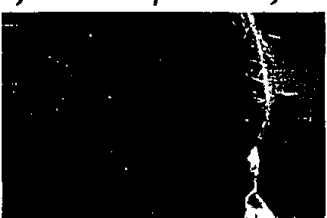
**CLARKSTON**  
www.thomasvilleofclarkston.com  
7550 Dixie Hwy.  
(248) 620-3344 / Toll Free: (888) 288-4553

**STERLING HEIGHTS**  
www.thomasvilleofsterling.com  
7023 14 Mile Rd.  
Phone: (810) 274-4440

Showroom Hours: Mon-Fri: 10-9 Sat: 10-6 Sun: 12-5

\*Thomasville is based on 1992. Not valid on prior sales. 30% deposit required. Based on approved credit with Thomasville Mastercard. Previous sales excluded. Cannot be combined with any other offer. See store for complete details.

Sometimes they can't  
just snap out of it.



Melissa is nearly 13 and she's having a hard time. For the past few months she hasn't been sleeping well and she has no desire to see her friends. Mostly she spends time in her room listening to music and lying on her bed. Her normally good grades have dropped and she doesn't seem to care. She says she wishes she'd never been born.

If this sounds like a child you know, he or she may be depressed. As many as five percent of young people today suffer from serious depression. He or she may be eligible for a nationwide research study that seeks to test the safety and effectiveness of an investigational antidepressant medication that is currently approved for use in adults.

If your child is between 7 and 17 years old, he or she may be eligible for this investigational research study. Those who qualify will be under a doctor's supervision and receive study-related physical exams, mental health assessment and study medication.

To learn more about this study, please call the toll-free number below.

**1-877-95-STUDY**

Franchise Friedman, M.D.,  
Institute for Health Studies  
Farmington Hills, MI

