

## GARDENING CALENDAR

Does your garden club have an upcoming event or meeting you want publicized? Send items for consideration in Gardening Calendar to Ken Abramczyk, Observer Newspapers, 38251 Schoolcraft, Livonia, MI 48150 or e-mail: [kabramczyk@oe.com](mailto:kabramczyk@oe.com), home.com, net. To send a fax, call (734) 691-7279.

## FLORAL STUFF

**ARRANGEMENTS**  
Several workshops are scheduled at Keller & Stein Florist and Greenhouse, 42158 Michigan in Canton. Reservations are needed for the workshops. Each workshop costs \$10 per person, and is non-refundable. Classes are scheduled at 10 a.m. and 2 p.m. The classes include a silk spring flower arrangement workshop, Saturday, Feb. 24, and herbal workshop, Saturday, March 17. Call (734) 397-0800.

## GARDEN CLUBS

**FARMINGTON**  
Sue Grubbs, owner of Creativescapes Systems, landscape consultant and instructor at the Michigan School of Gardening in Livonia, will discuss night lighting in landscape at

noon, Monday, March 5, at the Longacre House on the west side of Farmington Road between 10 Mile and 11 Mile roads. Visitors are welcome. For information, call (248) 476-3017 or (248) 615-3618.

**LIVONIA**  
Bette Pool, a member and past president of the Farmington Garden Club, will discuss "Water Gardening" at 7:30 p.m., Tuesday, March 6, at the Livonia Senior Center, 33000 Civic Center near Farmington and Five Mile roads. Visitors are welcome.

## BACK TO SCHOOL

**MORE GARDENING**  
The Michigan School of Gardening, 29429 Six Mile, in Livonia offers a variety of subjects. Register in advance. Weekly classes usually are scheduled for 6:30 a.m., while evening courses begin at 6:00 p.m. Classes listed here will be taught at the Livonia facility. Here is a list of some of the classes, some of which require prerequisite courses or experience:  
Propagation: Secrets for Making More Plants, scheduled for three Thursdays in morning or evenings, starting Thursday, Feb. 22. Pruning Trees and Shrubs will

be taught on two Mondays, starting March 19. Growing Fruit Trees, Shrubs and Fruiting Vines presented on two Wednesdays, March 14 and 21 and one Saturday, March 17. Garden Maintenance Workshop taught for four Wednesdays starting on March 28. Call (248) 4-GARDEN for information winter and spring classes or click on [www.michigan-gardening.com](http://www.michigan-gardening.com) for class information or for classes at other locations in Detroit, Pontiac and Macomb Township.

## LANDSCAPE DESIGN

Learn how to choose the best trees and shrubs to enhance the year-round color and interest in your landscape. Class is scheduled 9:15-10:40 a.m. Saturdays, starting March 10. The class is offered through Schoolcraft College's Continuing Education program. Other courses include Basic Perennial Gardening, 7-9:40 p.m., Wednesdays, starting March 14 and Hands-On Landscape, offered three days, 7-10 p.m., Thursday, April 19 and 26, and 8 a.m.-3 p.m. Saturday, April 28. Call (734) 462-4448.

## GARDEN SHOWS

**ANTIQUES MARKET**  
The fourth annual Michigan's

Home and Garden Antiques Market displays antiques and accessories for the home, garden and personal adornment in an antique garden setting. Selections include jewelry, furniture, garden and architectural pieces, birdhouses and benches, ornamental iron and garden gates, quilts, folk art, vintage clothing, purses and perfumes. Show hours are 2-9 p.m., Friday, March 16; noon-8 p.m., Saturday, March 17, and noon-5 p.m., Sunday, March 18, at the Southfield Civic Center, 26000 Evergreen (located at 10 1/2 Mile Road). Admission is \$6 with ads or listings or \$7. One paid admission is good for all days of the show. Children under 12 admitted free. For information, click on [www.antiqnet.com](http://www.antiqnet.com)/M&M

## GMC BUILDERS

The GMC Builders Home & Garden Show, the 83rd annual home show presented by the non-profit Building Industry Association of Southeastern Michigan, features products and services for home and garden at the Cobo Conference-Exhibition Center in Detroit. Show hours are 2-10 p.m., Thursday and Friday, March 22 and 23; 10 a.m.-10 p.m. Saturday, March 24 and 10 a.m.-6 p.m., Sunday, March 25.

Admission is \$7 adults, \$5 seniors, and \$4 for children 6-12. Children under 6 are free. Visit [www.builders.org](http://www.builders.org) or call (248) 862-1019.

## HERBS AND PLANTS

## EVENING STUDY

Cindy Klement will present "Herbal Remedies from the Garden" 7-9 p.m. Monday, March 5 at a meeting of an evening herb study group at the University of Michigan Matthaei Botanical Gardens, Monday March 5. The public and new members are welcome. Meetings are held in Room 125, Enter @ west end of the Matthaei Botanical Gardens, 1800 Dixboro, in Ann Arbor. For information, please call J. Schellhaas at (734) 761-1029 or e-mail [sburek@umich.edu](mailto:sburek@umich.edu).

## NEW PERSPECTIVES

Bodil Drescher Anya, a horticultural therapist master, will discuss "Starting a Program in Horticultural Therapy" at the 23rd annual conference of the Michigan Horticultural Therapy Association Friday, March 9, at the Plant and Soil Sciences Building at Michigan State University.

Anya has 22 years experience in establishing such programs. Sessions include Adaptive Gardening, HT with Seniors, HT with the severely physically disabled, hands-on craft workshops and other topics. Also featured are the annual Seedy Character contest, displays, exhibits and an optional tour of the Michigan State University Butterfly House. Registration is \$30 for MHTA members and \$40 for non-members if received before March 1. After that date, fees are \$45 for members and \$55 for others. Annual membership is \$15. A box lunch is available for \$6. For information, call Patrick Lewis at (616) 337-3300 or Cathy Leavay at (517) 655-4969.

## HERB-A-MANIA

Spice up your home with the presence of herbs. Whether you desire to grow herbs for the beauty of the plants themselves or for unique flavors, Schoolcraft College in Livonia has a culinary arts seminar scheduled for you 6-9 p.m. Thursday, March 22. Learn how to grow an herb garden, how to select which herbs to plant and how these herbs will enhance your cooking. Call (734) 462-4448 for information.

## Mimosa: It's homely, but fun!

By LEE REICH  
AP SPECIAL FEATURES

Mimosa is both inedible and homely, but you might want to grow it anyway for entertainment purposes. Touch the leaves on this tropical shrub and they suddenly collapse.

The response to touch is the result of an electrical stimulus and a chemical stimulus which travel through the plant at about an inch per second. You can watch the leaves of a large plant collapse in a wave of motion after one leaf is touched.

Response to touch is common in the plant kingdom. This spring, watch how your pea tendrils grab onto a trellis, or whatever else is nearby, to pull

up the vines. Your bean vines will close in tight spirals around any poles you have set out for them. And how about the Venus flytrap, which closes its hinged leaf around any unwitting fly?

Plants are discriminating about what they will move for. Venus flytrap distinguishes between living and dead prey by closing only if two different sensing hairs within its "jaws" are touched in succession, or if one hair is touched twice. Pea tendrils respond more quickly to rough or textured surfaces than to smooth or soft surfaces.

All this moving around serves a purpose. Tendrils and twining stems help get plants off the ground. Leaves that close

around a fly help nourish the Venus flytrap. "Fainting" of sensitive plants might be useful for helping the plant conserve water in drying winds, or for making the plant less appetizing to a hungry animal or insect.

All plants, some more than others, are smaller and stockier when repeatedly touched (or shaken or bruised). This is one reason why indoor and greenhouse plants, which are not exposed to wind, grow more leggy than outdoor plants. It's also why a pine tree growing on the wind-swept edge of a rocky cliff is so small and tough-looking compared with its avelite counterparts that are sheltered in the forest.

## Obtain trees by joining Arbor Day Foundation

Ten free Colorado blue spruce trees will be given to each person who joins the National Arbor Day Foundation during February 2001.

The free trees are part of the non-profit foundation's Trees for America campaign.

Colorado blue spruces have silver blue-green color and a

compact conical shape. They can be used as individual ornamentals, an energy-saving windbreak, a privacy screen or living Christmas trees.

The trees will be shipped postpaid at the right time for planting between March 1 and May 31 with enclosed planting instructions. The 6- to 12-inch trees are guaranteed to grow,

or they will be replaced free of charge.

To become a member of the foundation and receive the free trees, send a \$10 contribution to: Ten Free Colorado Blue Spruce Trees, National Arbor Day Foundation, 100 Arbor Ave., Nebraska City, Neb., 68410, by Feb. 28, 2001.

## Bromeliad group shares botanical guide on Web

The Southeast Michigan Bromeliad Society passes along these tips about taking botanical and wildlife educational journeys on the Web.

Explore the dazzling beauty of the flora of the rain forest — featuring

turing orchids, bromeliads, tillandsias and junco cacti. Visit a greenhouse that is loaded with exotics. Go to a Michigan cacti garden with 10 species not native to Michigan.

A Wildlife Habitat Page will

show you how to create your own habitat and what type of plant materials to use.

The Botanical Links Page will connect you to some of the most educational sites on the Web.

Wholesale Countertop Pricing  
Save 20 - 40%

## Marble - Granite - Silestone®

Why buy countertops at retail when you can buy direct.

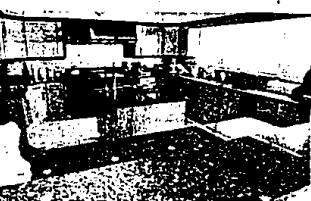
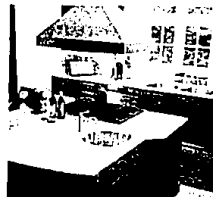
Since we fabricate at our own locations, we beat the "Big Box" store pricing. We offer quick delivery and personalized service.

## Granite 3cm thick!

- Luna Pearl
- Baltic Brown
- Verde Butterfly
- Rosa Beta
- Impala Black

**\$49.95 s/f installed!**

includes straight polished edge  
20 s/f minimum



## Silestone® 3cm thick!

- Capri Limestone
- Mountain Rose
- Silver Blue
- Tea Leaf
- Azul Leaf

**\$45.95 s/f installed!**

includes straight polished edge  
20 s/f minimum

We stock over fifteen hundred slabs of Marble, Granite and Silestone in over eighty unique colors. We stock the largest selection of imported ceramic tile in Michigan.

**Check our prices first!**

**Ceramic tile sale**  
6x6 floor tile bone/sand  
6x8 wall tile bone/blue  
12x12 floor tile stone  
look #31590

**49¢ s/f**

**89¢ s/f**

**99¢ s/f**

**Ceramic Tile Sales Inc.**

**Southfield**

23455 Telegraph Rd.

248-356-6430

**Rochester**

1972 Star Batt Dr.

248-853-4654

Visit one of our Showrooms!

**Showroom hours:**

M-T-Th W-F Sat  
8:30-5:00 8:30-8:00 9:00-5:00

Installation includes Wayne, Oakland, and Macomb Counties. Others at additional cost. Offer not valid with any other discount. All previous orders excluded. Subject to stock on hand.

**ANNUAL Winter Sale**  
**Final Two Weeks!**  
Don't let the grey days of winter keep you from doing something nice for yourself... and your home!  
Come in today to our annual winter sale and...

**SAVE 25%-40%**  
and...  
We will pay your 6% sales tax or... qualify for 6 months deferred financing.

**SAVE ON**  
Harden, Thomasville, Lexington, Pennsylvania House and More!

**CLASSIC INTERIORS FURNITURE**  
20292 Middlebelt, Livonia (South of 8 Mile)  
Visit us at [www.classicint.com](http://www.classicint.com)  
**248-474-6900**

Hours: Mon., Thurs., Fri. 9:30-9; Tues., Wed., Sat. 9:30-5:30; Sun. 1-5  
All Discounts Are Off Manufacturers' Suggested Retail Prices. All Previous Sales Excluded. Offer Not Valid in Conjunction with Any Other Promotional Discount.