

## EFFERVESCENT DECORATION

Designer showhouse bubbles  
with creativity, originality

BY MARY KLEMIC  
STAFF WRITER  
mklemic@ee.homecomm.net

The Vernor name may evoke thoughts of a gnome and good taste. Now it may also bring to mind a home with good taste. That's because the Detroit Historical Society's 2001 Designer Showhouse is at the historic Vaughan-Vernor estate in Bloomfield Hills.

James and Grace Vernor, of the family synonymous with the famous Detroit ginger ale, lived in the Federal style farmhouse between 1924 and 1941. The residence, now owned by Gunnar and Dina Wilmut, was built in 1839 by the Vaughan family.

Local designers are among those from the Michigan Chapter of the American Society of Interior Designers who have decorated the house, 4778 Lahser between Lone Pine and Long Lake Road in Bloomfield Hills. It will be open to the public May 5 to June 3.

A gift shop, operated by the Detroit Historical Society Guild, and a cafe with light cuisine entered by Fox & Hounds will be on the grounds. Visitors may attend design seminars which are free with showhouse admission (see listing at right).

Many of the rooms were decorated in neutral tones. Natural elements and their representation — such as animal prints — abound. Original features are retained in many of the spaces.

Whether cozy or spacious, each room or area has its distinct charm and conveys the comfortable ambience of a fresh spring day.

### Sampling

The showhouse entrance will be from the parlor by two designers from Marshall Field's Interior Design Studio, Linda Thomas at Westland and Rita Whitehead at Oakland.

The design in the taupe wall covering matches the pattern of the metal chandelier. A roman shade is at the window. The area rug and the paintings on the mantel of the stone fireplace feature spots of bright color.

Roy Hanks of Roy Allen Hanks Interiors of Troy arranged a collection of artistic roosters in the sitting room. Designs in the wallpaper and rug resemble the slender feathers of a rooster's tail.

The adjacent bathroom by Lynda Charfoos of Charfoos Design Group of Bloomfield Hills features a bamboo covering on a tub. Black and white photos of Detroit scenes line the walls.

In the hearth room by Daniel Clancy of Perlmutter-Freiwald Inc. of Franklin, creamy drapes hang at the windows, the inside edges bearing a border that includes a color similar to that of the walls.

Among the accents on the table are candlesticks with tall spiraling stems, a subtle suggestion of the drapery borders. The gently curved ceiling is decorated with squares of flowery designs.

Bonnie Meyer of Meyer Interiors Inc. of West Bloomfield covered the walls in the kitchen and morning room in black and white toile.

Much of the kitchen area is in black and white. Banana and sage accents add color in the glass cabinets. The morning room is dressed in assorted greens, including the sheer curtains in a right angle at the windows and the layered tablecloths.

In the front room in the carriage house, Randie Federman of Maxwell-Ross Associates of Troy combined the lush and the sleek.

Lush is in the greenery throughout the room, including topiaries, an urn covered in green plants on a table and fruit in bowls, as well as in the large chaise and chairs. Sleek is in such features as the designer, C2

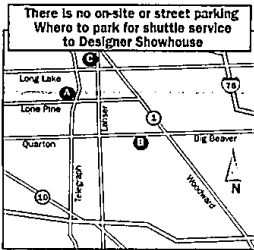


At the showhouse: The parlor by Linda Thomas and Rita Whitehead of Marshall Field's Interior Design Studio is an example of the comfortable style of the rooms at the Detroit Historical Society's Designer Showhouse in Bloomfield Hills. It opens to the public this week.

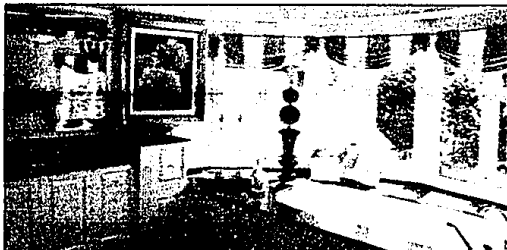
STAFF PHOTO BY TOM HOFFMANN

### 2001 Designer Showhouse Special Design Seminars

- Tuesday, May 8**
- "The Interior Designer as Part of the Team When Building or Remodeling" by Kasey Pierson, ASID, 11:45 a.m.
  - "Accessorizing Your Home" by Karen Sellenraad, ASID, 2:30 p.m.
- Wednesday, May 9**
- "Impact and Value of Art in Living Spaces" by Teri Main, allied member ASID, 11:45 a.m.
  - "Creating Your Style with Color" by P. K. Fields, ASID, 2:30 p.m.
- Thursday, May 10**
- "What It Takes to Become a Professional Designer" by Lynda Charfoos, ASID, 11:45 a.m.
  - "Impact and Value of Art in Living Spaces" by Barb Main, ASID, and students from the Center for Creative Studies, 2:30 p.m.
- Friday, May 11**
- "Why Install Window Film?" by Edward Golda, ASID industry partner, 11:45 a.m.
  - "Ask the Professional Designer" by Bonnie Meyer, ASID, 2:30 p.m.
- Tuesday, May 15**
- "Planning for Assisted Living" by Rae Buskin, ASID, 11:45 a.m.
  - "The Latest and Greatest in the Kitchen" by Vita Buffa, allied member ASID, 2:30 p.m.
- Wednesday, May 16**
- "What's in the Color Forecast?" by Karen Sellenraad, ASID, 11:45 a.m.
  - "Window Film Solutions" by William Kish, ASID industry partner, 2:30 p.m.
- Thursday, May 17**
- "Bringing Your Office Home" by Susan Weaver, ASID, 11:45 a.m.
  - "It Doesn't Have to be a Fireplace" by Bonnie Meyer, ASID, 2:30 p.m.
- Friday, May 18**
- "What It Takes to Become a Professional Designer" by Lynda Charfoos, ASID, 11:45 a.m.
  - "How to Keep Your House Your Home When Working With an Interior Designer" by Linda Thomas, ASID, 2:30 p.m.
- Tuesday, May 22**
- "Custom Cabinetry: Everything in Its Place" by Amy Brodsky, ASID, 11:45 a.m.
  - "What It Takes to Become a Professional Designer" by Lynda Charfoos, ASID, 2:30 p.m.
- Wednesday, May 23**
- "Ask the Professional Designer" by Patti Komet, allied member ASID, 11:45 a.m.
  - "Creating Your Style with Color" by P.K. Fields, ASID, 2:30 p.m.
- Thursday, May 24**
- "Ask the Professional Designer" by Bonnie Meyer, ASID, 11:45 a.m.
  - "Color Through Fabrics" by Gene Galley, ASID, 2:30 p.m.
- Friday, May 25**
- "What's in the Color Forecast?" by Karen Sellenraad, ASID, 11:45 a.m.
  - "Accessorizing Your Home" by Kasey Pierson, ASID, 2:30 p.m.
- Tuesday, May 29**
- "Bringing Your Office Home" by Susan Weaver, ASID, 11:45 a.m.
  - "How to Keep Your House Your Home When Working With an Interior Designer" by Linda Thomas, ASID, 2:30 p.m.
- Wednesday, May 30**
- "It Doesn't Have to be a Fireplace" by Bonnie Meyer, ASID, 11:45 a.m.
  - "Window Film Solutions" by William Kish, ASID industry partner, 2:30 p.m.
- Thursday, May 31**
- "The Latest and Greatest in the Kitchen" by Vita Buffa, allied member ASID, 11:45 a.m.
  - "When and How to Use an Interior Designer" by Renea Lewis, allied member ASID, 2:30 p.m.
- Friday, June 1**
- "Harmonizing Your Home With Feng Shui" by Margie Cooke, ASID, 11:45 a.m.
  - "Color Through Fabrics" by Gene Galley, ASID, 2:30 p.m.



- A. 2100 Lone Pine, NW corner of Telegraph  
Parking at Cross of Great Lakes Church, weekdays except Friday, May 11 and Saturday, May 5.
- B. 1525 Covington, between Lahser and Woodward.  
Parking weekends at Birmingham Covington School except May 6.
- C. 3456 Lahser Road, between Long Lake and Hickory Grove. Sunday, May 6, parking at Bloomfield Hills Lahser High School.



Bathing beauty: The master bath, by Farimah Sedghi of Inspiration Interiors of West Bloomfield, features windows by William Kish of Solar Reflective Films Inc. of Farmington Hills.



Rooms to view: The hearth room (above) by Daniel Clancy of Perlmutter-Freiwald Inc. of Franklin, features creamy drapes with a border matching the color of the walls. The morning room (right) by Bonnie Meyer of Meyer Interiors Inc. of West Bloomfield, is dressed in black and white toile and assorted shades of green.



INSIDE



JOE GAGNON

### Catching the cold

Today's refrigerators aren't as cold as the earlier units once were, according to the Appliance Doctor

See Home Work, Page 3



MARTY FIGLEY

### Take it slow

Use slow-release fertilizers to reduce the burn potential on your garden plants.

Garden Spot, Page 4



HOMETOWN LIFE:

### Baroness speaks:

Caroline Cox mesmerized the audience at the annual Tynedale College Scholarship Dinner.

HomeTown Life, Page 5