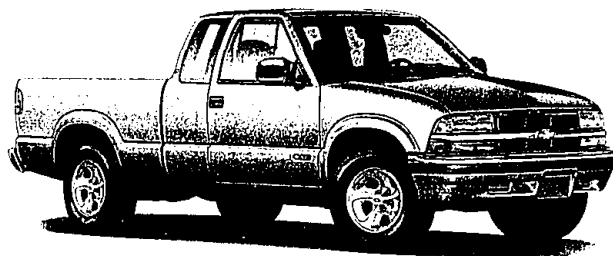


# HOW'S THIS FOR AN ADRENALIN RUSH?



2001 CHEVY™ S-10®

**\$2,500** Cash  
Back\*

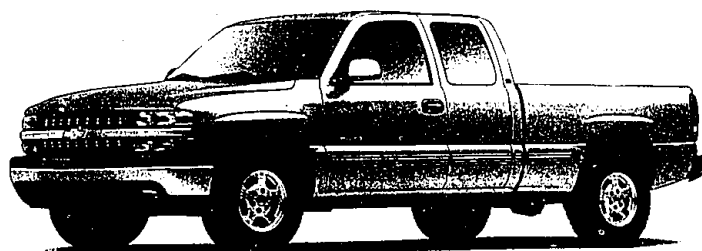


2001 CHEVY VENTURE®

**0.9%** FOR  
APR QUALIFIED  
BUYERS'

\$5,185 IN AVERAGE FINANCE SAVINGS

OR  
**\$2,500** Cash  
Back\*



2001 CHEVY SILVERADO®  
1/2-TON 2WD EXT. CAB SHORT BOX

GM EMPLOYEES ONLY

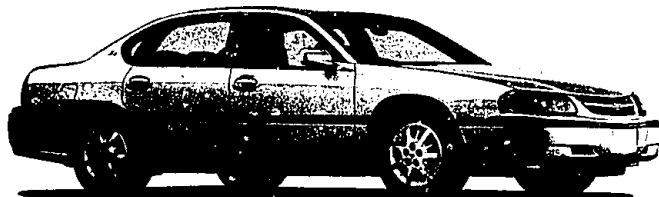
**\$269** 36-MONTH LEASE  
/MONTH\*\*

\$1,169 Due at Lease Signing

Includes Security Deposit.

Tax, title and license extra.

Payments include available factory to dealer cash.



2001 CHEVY IMPALA®

GM EMPLOYEES ONLY

**\$256** 36-MONTH LEASE  
/MONTH\*\*

\$999 Due at Lease Signing

Includes Security Deposit.

Tax, title and license extra.

Payments include available \$500 Bonus cash.

SEE DEALER FOR RESIDENCY AND OTHER RESTRICTIONS.



SEE YOUR CHEVY DEALER

\*Take delivery by 7/2/01. Not available with other offers. †Length of contract limited. Take delivery by 7/2/01. Not available with other offers. Savings based on Bankrate, Inc. data. \*\*Silverado payments are for a 2001 Chevy Silverado 2WD 1/2-Ton Extended Cab Short Box with an MSRP of \$24,903. 36 monthly payments total \$9,665. Impala payments are for a 2001 Chevy Impala with an MSRP of \$20,401. 36 monthly payments total \$8,186. Option to purchase at lease end for an amount to be determined at lease signing. GMAC must approve lease. Take delivery by 7/2/01. Mileage charge of \$.20/mile over 36,000 miles. Lessee pays for excess wear. Payments may be higher in some states. Not available with other offers. All current GMS rules apply. Available only to residents of MI, MN, WI and select counties of IA, IL, IN, KY, MD, ND, NE, NY, OH, PA, SD and WV. ©2001 GM Corp. Buckle up, America! 1-800-950-2438 or chevy.com