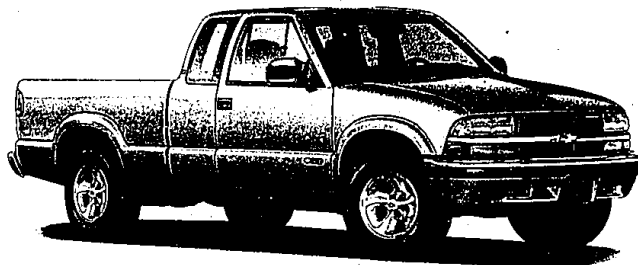


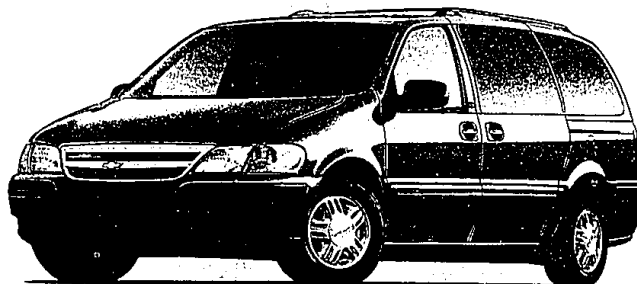
HOW'S THIS FOR AN ADRENALIN RUSH?



2001 CHEVY™ S-10®

NOW ON ALL NEW 2001 S-10s

\$2,500 Cash Back*



2001 CHEVY VENTURE®

0.9% APR For Qualified Buyers†

\$5,185 In Average Finance Savings‡

OR

\$2,000 Cash Back*

+ **\$500** Bonus Cash*

\$2,500 Total Cash Back*



2001 CHEVY SILVERADO®
1/2-TON 2WD EXT. CAB SHORT BOX

GM EMPLOYEES ONLY

36-MONTH LEASE
\$269/MONTH**

\$1,169 Due at Lease Signing
Includes Security Deposit.

Tax, title and license extra.

Payments include available Factory-to-Dealer Cash.



2001 CHEVY MALIBU®

GM EMPLOYEES ONLY

36-MONTH LEASE
\$189/MONTH**

\$1,364 Due at Lease Signing
No Security Deposit Required.

Tax, title and license extra.

SEE DEALER FOR RESIDENCY AND OTHER RESTRICTIONS.



SEE YOUR CHEVY DEALER

*Take delivery by 7/2/01. †Length of contract limited. Take delivery by 7/2/01. Savings based on Bankrate, Inc. data. **Silverado payments are for a 2001 Chevy Silverado 2WD 1/2-Ton Extended Cab Short Box with an MSRP of \$24,903. 36 monthly payments total \$9,689. Malibu payments are for a 2001 Chevy Malibu with an MSRP of \$17,775. 36 monthly payments total \$6,804. Option to purchase at lease end for an amount to be determined at lease signing. GMAC must approve lease. Take delivery by 7/2/01. Mileage charge of \$20/mile over 36,000 miles. Lessee pays for excess wear. Payments may be higher in some states. Available only to residents of MI, MN, WI and select counties in IA, IL, IN, KY, MO, ND, NE, NY, OH, PA, SD and WV. All current GMS rules apply. ©2001 GM Corp. Buckle up, America! 1-800-950-2438 or chevy.com