

Harrison-Canton clash qualifies as Game of the Year

Every year, there's one regular-season game that defines the prep season. Sometimes it's difficult to immediately identify that game with certainty, but this year one that should be heavily considered will take place Friday,

when powerhouse Farmington Harrison visits up-and-coming Plymouth Canton. A couple of years ago, no one could have conceived that this game could reach that level of importance. Canton had been in the playoffs just once in its history,

and that was in 1991; Harrison was a perennial state — never mind league — champion. Indeed, it was a couple of years ago that the pieces of this puzzle began to congregate, forming what would become this game. In 1999, the Hawks were

in trouble; they had unwittingly used an ineligible player, causing them to forfeit two wins. Then they got beat by Walled Lake Western, 21-12. Going into their game against Canton, they were 2-4; they knew they had to sweep the rest of their regular-season slate for any hope of making the state playoffs.

The Chiefs, on the other hand, were actually in a better position. They had just defeated Northville, 24-0, to improve to 4-2. Two more wins would put them in the playoffs.

If a single game that season proved decisive in the fates of several teams, this was it. Harrison rebounded from its losses to bounce Canton, 35-0 at Canton; from there, the Hawks went on to make the state playoffs with a 5-4 record, and ended up winning the state championship.

Canton, in its second season under Tim Beaudry as coach, missed the playoffs in '99. But things were improving; in 2000 the Chiefs did make it, and won their first two playoff games as well.

As for Harrison, well, what can one say that hasn't already been said? Suffice to say that win over Canton in 1999 started the Hawks on a streak that is still rolling. They have won 25-straight games, and two state titles, in that span.

Now for 2001. Both teams are unbeaten at 3-0; both are coming off impressive road victories, Harrison demolishing Walled Lake Western (the last team to beat the Hawks, remember?) 44-0 and Canton handing a solid Northville club a 49-0 thrashing.

There are some other key games this week. Unbeaten Redford Bishop Borgess plays at 2-1 Center Line St. Clement; Redford Catholic Central (2-1) goes against Detroit DePue (1-1) at Kraft Field; and Livonia Franklin (2-1) visits Northville (2-1).

As for the prediction race among the sports editors, Paul Beaudry, the pride (7) of Redford-Garden City, had the week's best record at 11-3, bringing his season mark to 34-11. Livonia-Westland's Brad Emmons continues to set the overall standard with a 36-9 record; Emmons, Farmington's Dan O'Meara and yours truly all went 10-4 last week. Overall, O'Meara is tied

with Beaudry at 34-11, leaving me in last place at 33-12.

FRIDAY GAMES

Livonia Stevenson (2-2, 0-3) at Farmington (0-2, 2-1), 7 p.m.: Both teams are searching for their first wins in the Western Lakes Activities Association's Lakes Division. Stevenson was beaten by Westland John Glenn, 15-7; Farmington was blanked by Walled Lake Central, 37-0. The Falcons aren't going to win a lot this season, and chances are slim this will be one of them. PICKS: Stevenson — Risak, Beaudry, O'Meara, Emmons.

Redford Bishop Borgess (3-0, 0-0) at Center Line St. Clement (2-1, 0-0), 7 p.m.: Borgess is coming off a 24-13 victory over Detroit Benedictine; the Spartans are halfway to a state playoff berth. St. Clement showed a lot of offense in powering past North Branch Westleyan, 62-47. Defense is not part of the Crusaders' game plan; they've scored at least 39 points in each of their games (126 if you're counting). PICKS: Borgess — O'Meara, Emmons; St. Clement — Risak, Beaudry.

Plymouth Salem (0-3, 0-3) at Westland John Glenn (2-1, 1-0), 7 p.m.: The Rocks, in their first year under coach Bob Cummings, are in trouble. Last Friday they hosted a North Farmington team that had just one win this century and got whipped, 35-14. John Glenn, a 15-7 winner over Livonia Stevenson last week, will add to Salem's troubles. PICKS: John Glenn — Risak, Beaudry, Emmons, O'Meara.

Wayne (2-2, 1-4) at Woodhaven (2-1, 1-1), 7 p.m.: The records are the same, but don't be misled. The Warriors will provide a difficult test for Wayne in this battle between Mega White teams; they lost 7-6 to unbeaten Taylor Tuman last week, with poor special teams play, having a punt blocked and a last-second field goal attempt deflected. The Zebras dumped winless Dearborn Edsel Ford, 18-7. PICKS: Wayne — Emmons; Woodhaven — Risak, Beaudry, O'Meara.

Garden City (2-2, 0-2) at Wyandotte Roosevelt (2-1, 1-1), 7 p.m.: The Cougars couldn't stop Belleville sophomore Devon Geraldine, who rushed for 100 yards on 13 carries, in last Friday's 34-20 loss. How are they going to handle Wyandotte's Pat Adamson, who had 118 yards on the ground with two touchdowns in a 12-3 win over Monroe Friday? PICKS: Wyandotte — Risak, Beaudry, O'Meara, Emmons.

Trenton (2-2, 1-3) vs. Redford Union (2-2, 1-3) at Kraft Field, 7 p.m.: Both are coming off shutouts, only at opposite ends. Trenton blanked Dearborn Heights Robichaud, 27-0; RU was blanked by Redford Thurston, 22-0. The Trojans, who have a pretty freshman named Risak in their marching band, hope to get similar production this week from senior John Vandenberg (10 carries, 98 yards, two TDs). The Panthers want any kind of production. PICKS: Trenton — Risak, Beaudry, O'Meara, Emmons.

Gibraltar Carlson (3-0, 0-1) at Redford Thurston (2-1, 1-3), 7:30 p.m.: Big plays and strong defense were the difference in Thurston's win over RU Friday. The Eagles scored on a 65-yard Kevin Orlito-Trevia fargos pass play and a blocked punt by Corey Reid, more than enough for their defense. As for Carlson, Willow Run handed the Marauders their third-straight loss, 40-8 last Friday. PICKS: Thurston — Risak, Beaudry, O'Meara, Emmons.

Clarenceville (3-0, 3-0) at Hamtramck (0-3, 0-3), 7:30 p.m.: Hamtramck has

two things to its advantage — the home field, which hasn't helped so far this year (Macomb Lutheran North ripped 'em 49-0 last Saturday), and one of the best nicknames in the business — Cosmos. Everything else favors Clarenceville. The score on Friday will, too. PICKS: Clarenceville — Risak, Beaudry, O'Meara, Emmons.

W.L. Western (2-2, 0-3) at Livonia Churchill (3-2, 0-1), 7:30 p.m.: Both teams are coming off losses in their W.L.A.A. Western Division opener. That's where the similarity in these two teams ends. Western was pounded by Harrison, 44-0, which no doubt made the Warriors cringe. Churchill lost to rival Franklin, 17-0, leaving the Chiefs' era a bit testy, too. Something tells me Western's overconfidence will beat Churchill's testiness. PICKS: Western — Risak, Beaudry, O'Meara, Emmons.

Livonia Franklin (2-1, 1-0) at Northville (2-1, 1-0), 7:30 p.m.: The Patriots have proven to be tenacious in their first three games, winning two of them. Can they keep it up against a Northville team that was in heaven after upsetting John Glenn one week, then in the doldrums after getting drilled by Canton on Friday? This could be a close one. PICKS: Northville — Risak, Beaudry, O'Meara, Emmons.

North Farmington (1-2, 1-0) at W.L. Central (2-1, 0-1), 7:30 p.m.: The Vikings rolled it up over Farmington, winning 37-0 last Friday. North, meanwhile, switched quarterbacks to Bryan Smith and rode his 225 yards rushing and passing to a 35-14 win over Plymouth Salem. Now the question is, can the Raiders win another Lakes Division road game? Answer — Central has little in common with Salem. PICKS: Central — Risak, Beaudry, O'Meara, Emmons.

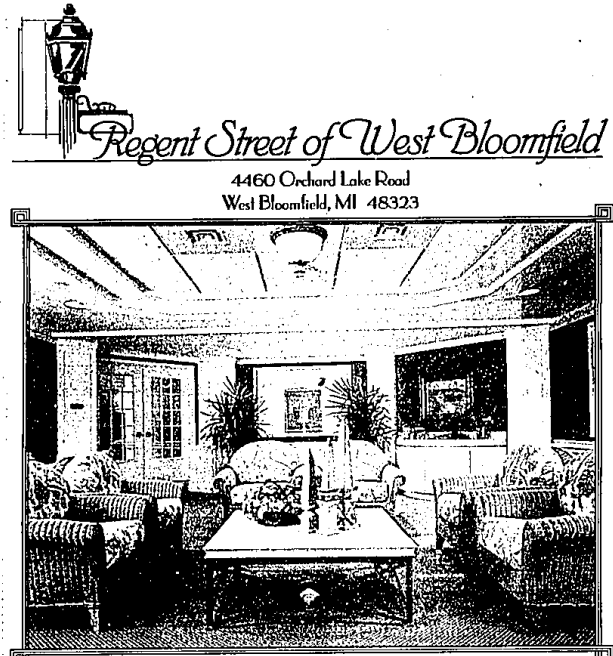
Farmington Harrison (3-0, 1-0) at Plymouth Canton (3-0, 1-0), 7:30 p.m.: Besides the obvious, there's W.L.A.A. considerations to consider. If Harrison wins this, it will be in the driver's seat to win the Western Division (again). Canton, who has made tremendous progress in the past two years, but chances are the Chiefs haven't caught up to what many are calling the best Hawks' team ever. Still, the game is at Canton. PICKS: Harrison — Emmons, Beaudry, O'Meara, Canton — Risak.

SATURDAY'S GAMES

Lutheran Westland (2-1, 1-1) at B.H. Cranbrook (2-1, 2-0), 1 p.m.: The Warriors saw their two-game winning streak end with a 20-18 double-overtime loss to University-Light on Saturday. Cranbrook edged Harper Woods, 14-6, to stay unbeaten in the Metro Conference. This figures to be an important game for both teams. PICKS: Cranbrook — Risak, O'Meara, Emmons; Luth. Westland — Beaudry.

Detroit DePue (1-1, 1-0) vs. Redford CC (2-1, 1-0), 1 p.m. at Kraft Field: DePue got its first win of the season last week, beating Dearborn Divine Child 17-13. Does that make the Eagles good enough to take on CC, which blitzed Orchard Lake St. Mary's 21-7 Saturday? Don't think so. PICKS: CC — Risak, Beaudry, O'Meara, Emmons.

Red St. Agatha (1-2, 0-1) vs. M.C. Cardinal Mooney (2-0, 1-0), 7 p.m. at Kraft Field: Taylor Light and Life knocked off the Aggies in their Catholic League Division opener, 22-8 last Saturday. Marine City Cardinal Mooney, meanwhile, ran its record to 2-0 overall with a 34-14 trouncing of Wyandotte Mt. Carmel. This will be an uphill battle for St. Agatha. PICKS: Cardinal Mooney — Risak, Beaudry, O'Meara, Emmons.



Regent Street of West Bloomfield
4460 Orchard Lake Road
West Bloomfield, MI 48323

THE FINEST OF ASSISTED LIVING, with CATERED SERVICES in BEAUTIFUL SURROUNDINGS CREATED ESPECIALLY for older adults

Studios and suites with private baths
Three well planned daily meals • Licensed Nurses & Resident Assistants 24 hours/7 days • Emergency call systems • Medication management • Alzheimer's and dementia care • Housekeeping and linen services • Pool and exercise room • Scheduled activities 7 days weekly • Game room • Hair Salon • Sundries Shop • Transportation • Includes all utilities except telephone

Call Renee Mahler at 248-683-1010 for additional information
This is your alternative to a nursing home

Joint Commission
on Accreditation of Healthcare Organizations

SPECIAL SCHOOL ELECTION
NOTICE OF SPECIAL ELECTION OF THE ELECTORS OF FARMINGTON PUBLIC SCHOOL DISTRICT
OAKLAND COUNTY, MICHIGAN
TO BE HELD
SEPTEMBER 25, 2001

TO THE ELECTORS OF THE SCHOOL DISTRICT:
Please Take Notice that the Board of Education, pursuant to a directive from the Intermediate School Board of Oakland Schools Intermediate School District, Michigan, has called a special intermediate school district election to be held in the district on Tuesday, September 25, 2001.

THE POLLS OF ELECTION WILL OPEN AT 7:00 O'CLOCK, A.M., AND CLOSE AT 8:00 O'CLOCK, P.M.

The following propositions will be submitted to the vote of the electors at the special intermediate school district election:

I. **SPECIAL EDUCATION MILLAGE PROPOSAL**
This proposal will increase the levy by the intermediate school district of millage for special education previously approved by the electors.

Shall the limitation on the annual property tax rate previously approved by the electors of Oakland Schools Intermediate School District, Michigan, for the education of persons with disabilities be increased by 1.1704 mills (\$1,170.40 on each \$1,000.00 of taxable valuation); the estimate of the revenue the intermediate school district will collect if the millage is approved and levied in calendar year 2001 is approximately \$56,645,384 from local property taxes authorized herein?

II. **VOCATIONAL EDUCATION MILLAGE PROPOSAL**
This proposal will increase the levy by the intermediate school district of millage for area vocational-technical education programs previously approved by the electors.

Shall the limitation on the annual property tax rate previously approved by the electors of Oakland Schools Intermediate School District, Michigan, for area vocational-technical education programs be increased by .2279 mill (\$2,279.00 on each \$1,000.00 of taxable valuation); the estimate of the revenue the intermediate school district will collect if the millage is approved and levied in calendar year 2001 is approximately \$10,816,783 from local property taxes authorized herein?

THE VOTING PLACES ARE AS FOLLOWS:

PRECINCT NO. 1
Voting Place: Longacre Elementary School, 34850 Arundel Street

PRECINCT NO. 2
Voting Place: William Grace Elementary School, 29040 Shawansee Street

PRECINCT NO. 3
Voting Place: East Middle School, 25000 Middlebelt Road

PRECINCT NO. 4
Voting Place: Warner Middle School, 30303 W. Fourteen Mile Road

PRECINCT NO. 5
Voting Place: Dunckel Middle School, 32800 Twelve Mile Road

PRECINCT NO. 6
Voting Place: Forest Elementary School, 34645 Old Timber Road

PRECINCT NO. 7
Voting Place: Hillside Elementary School, 36801 W. Eleven Mile Road

PRECINCT NO. 8
Voting Place: Gill Elementary School, 21195 Gill Road

All school electors who are registered with the city or township clerk of the city or township in which they reside are eligible to vote at this election. This Notice is given by order of the Board of Education of Farmington Public School District, Oakland County, Michigan.

PAMELA D. CHRISTIAN
Secretary, Board of Education

Published September 13 & 20, 2001

SPECIAL SCHOOL ELECTION
NOTICE OF SPECIAL ELECTION OF THE ELECTORS OF FARMINGTON PUBLIC SCHOOL DISTRICT
OAKLAND COUNTY, MICHIGAN
TO BE HELD
SEPTEMBER 25, 2001

TO THE ELECTORS OF THE SCHOOL DISTRICT:
Please Take Notice that the Board of Education, pursuant to a directive from the Intermediate School Board of Oakland Schools Intermediate School District, Michigan, has called a special intermediate school district election to be held in the district on Tuesday, September 25, 2001.

THE POLLS OF ELECTION WILL OPEN AT 7:00 O'CLOCK, A.M., AND CLOSE AT 8:00 O'CLOCK, P.M.

The following propositions will be submitted to the vote of the electors at the special intermediate school district election:

I. **SPECIAL EDUCATION MILLAGE PROPOSAL**
This proposal will increase the levy by the intermediate school district of millage for special education previously approved by the electors.

Shall the limitation on the annual property tax rate previously approved by the electors of Oakland Schools Intermediate School District, Michigan, for the education of persons with disabilities be increased by 1.1704 mills (\$1,170.40 on each \$1,000.00 of taxable valuation); the estimate of the revenue the intermediate school district will collect if the millage is approved and levied in calendar year 2001 is approximately \$56,645,384 from local property taxes authorized herein?

II. **VOCATIONAL EDUCATION MILLAGE PROPOSAL**
This proposal will increase the levy by the intermediate school district of millage for area vocational-technical education programs previously approved by the electors.

Shall the limitation on the annual property tax rate previously approved by the electors of Oakland Schools Intermediate School District, Michigan, for area vocational-technical education programs be increased by .2279 mill (\$2,279.00 on each \$1,000.00 of taxable valuation); the estimate of the revenue the intermediate school district will collect if the millage is approved and levied in calendar year 2001 is approximately \$10,816,783 from local property taxes authorized herein?

THE VOTING PLACES ARE AS FOLLOWS:

PRECINCT NO. 1
Voting Place: Longacre Elementary School, 34850 Arundel Street

PRECINCT NO. 2
Voting Place: William Grace Elementary School, 29040 Shawansee Street

PRECINCT NO. 3
Voting Place: East Middle School, 25000 Middlebelt Road

PRECINCT NO. 4
Voting Place: Warner Middle School, 30303 W. Fourteen Mile Road

PRECINCT NO. 5
Voting Place: Dunckel Middle School, 32800 Twelve Mile Road

PRECINCT NO. 6
Voting Place: Forest Elementary School, 34645 Old Timber Road

PRECINCT NO. 7
Voting Place: Hillside Elementary School, 36801 W. Eleven Mile Road

PRECINCT NO. 8
Voting Place: Gill Elementary School, 21195 Gill Road

All school electors who are registered with the city or township clerk of the city or township in which they reside are eligible to vote at this election. This Notice is given by order of the Board of Education of Farmington Public School District, Oakland County, Michigan.

PAMELA D. CHRISTIAN
Secretary, Board of Education

Published September 13 and 20, 2001

Opening Night

Plymouth Whalers

Get Hooked

Saturday, September 15

vs. Erie Otters

Puck drops at 7:30 p.m.
Pre-game starts at 6 p.m.

Family Value Night: 4 tickets, 4 Hot Dogs, 4 Pepsi's and 2 game programs for only \$36!

Individual Tickets just \$8 and \$12
All fans in attendance will receive a free magnet schedule!

Call (734) 453-8400 to charge tickets by phone

Daytime Learn To Skate Classes Still Available (Tues & Thurs)
Call (734) 453-6400 for more info.