

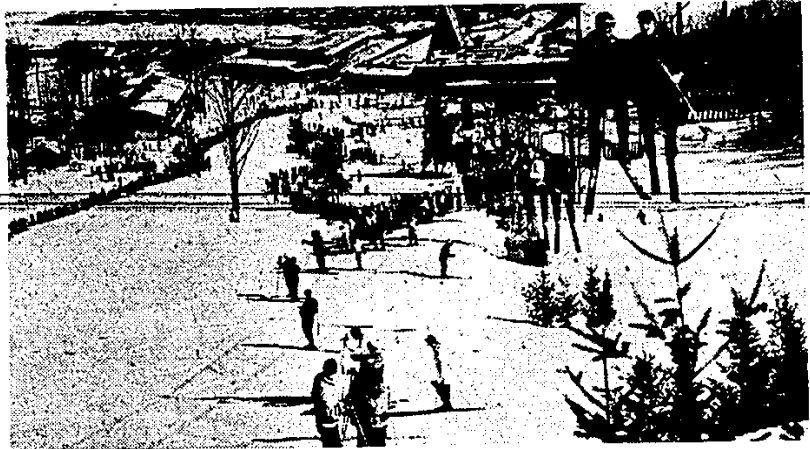
Why Car Needs Winter Care

There was a time not too many years ago when the family car went into winter storage along with the beach gear, the golf clubs and the cotton clothing.

Cars just couldn't take the rigors of winter driving and, besides, where was there to go? So, into the garage and up on blocks was the rule until the following spring.

But today, the car is a van for all seasons. Engineering and design improvements and good maintenance make a car as dependable in foul weather as it is in fair. Furthermore, there is such an enticing array of fall and winter attractions that information is foolhardy, unless you are a bear.

First, let's look at the modern car versus those of grandpa's



GROWTH IN POPULARITY of cold weather sports has made winter automobile travel almost as vital to fun as the summer variety. Ski resorts find parking lots filled with cars. To get to these resorts and other sports areas, cars must be in extra good condition.

time. Today's coolants, when properly looked after, are virtually foolproof. Cars of yesterday had to depend on coolants that boiled away quickly or could withstand only moderate cold.

Modern tires with new designs attack ice and snow with the surefootedness of a tight rope walker. Even things we now take as a matter of course like efficient heaters and defrosters, improved suspension, steering and fuels take the doubt out of winter driving.

Thanks to the new dependability of the automobile, motoring families are enjoying a bountiful choice of places to go. Winter motoring vacations to the southern United States are becoming almost as common as summer vacations.

Fall and winter sports such as hunting, skiing, snowmobiling, skating, ice fishing and tobogganing are luring millions to resorts throughout the U.S. and Canada. With artifi-

cial snow making machines, even mild winter-area elevations are becoming ski resorts and are attracting throngs of enthusiasts.

But even with better cars and more places to go in them, winter motoring is not immune from unusual hazards. For example, one out of every four cars in North America will experience winter starting trouble. Of all who have trouble starting, three out of five will have it more than once.

Yet there is no need for starting trouble — even in the coldest climates. Exhaustive studies prove that in instances where ignition maintenance is practiced, starting problems are rare. Conversely, where maintenance is neglected, starting trouble is common — even in warm weather areas!

If there is any conclusion to be gathered, it is this. More people are going to more places by car in winter. Cars are capable of coping with the most severe rigors winter can offer. That is if the cars are properly maintained and equipped.

This section is intended to show how proper car care will give you more fun behind the wheel this winter.

ONE OF MICHIGAN'S OLDEST MOST REPUTABLE GARAGE BUILDERS

Presents an all new model display-by Grissom



- Don't sign a 24-hour cancellation clause. It could cost you \$200.00 to \$300.00.
- That all verbal promises are written as to type of lumber, garage door and specifications you requested.
- Our low overhead and high recommendations give you the finest in quality of a savings.

- Compare price
- Compare quality
- 100% guaranteed custom building
- No money down
- Free estimates

KE 3-7070

Grissom Garage Builders
25111 W. 7 Mile 1 Block West of Grand River

EDWARDS GLASS CO.

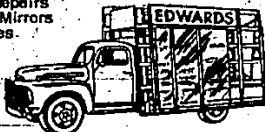
AUTO GLASS

Installed
...WHILE YOU WATCH!

ALSO RESIDENTIAL and COMMERCIAL Insurance Replacements

- Aluminum Patio Doors
- Storm Window Repairs
- Custom or Stock Mirrors
- Shower Enclosures
- Glass Tops

24-HOUR
Emergency and
Board-up Service



The Ideal Christmas Gift
ORDER MIRRORS NOW!

CONVENIENT LOCATIONS

LIVONIA
32000 Plymouth Rd.
6 blocks W. of Merriman
GA 2-7540

GARDEN CITY
31310 FORD RD.
At Merriman
422-6110

ENJOY NEW CAR BEAUTY



BODY & FENDER REPAIRS
EXPERT REFINISHING

LOANER CARS
24 HR. WRECKER SERVICE

FORD ROAD COLLISION

30464 FORD ROAD
GARDEN CITY, PH. 425-7766

SEE US
FOR YOUR CAR
CARE NEEDS

Open 7 a.m. to 9:30 p.m.

C & C

STANDARD SERVICE

ANN ARBOR & LÄLEY ROADS
453-9648



DON'T Monkey Around

LET US GIVE YOUR CAR
THAT NEW LOOK!

RELY ON OUR EXPERT WORKMANSHIP

- COMPLETE POLISHING & RECONDITIONING
- Interior Cleaning • Motor Cleaning & Painting
- Undercoating --- Rust Proofing

We Pick up and Deliver — Call 453-7190
SATISFACTION GUARANTEED

BONDED BEAUTY
AUTO-RECONDITIONING

Since 1952 the Finest in Automotive Reconditioning
14485 Northville Road Plymouth
Hours: Mon. thru Sat. — 8 a.m. - 5 p.m.

Warranty Requires Auto Care

Contrary to what many owners may think, the five-year or 50,000-mile warranty on American cars is not necessarily a "pay-all" if trouble strikes!

Under the new warranties, owners are required to have certain preventive maintenance services performed as outlined in their owner's manual to keep the warranty in force.

These services fall into two groups. One, services to be performed at specific mileage intervals. Two, services that should be performed on an "as needed" basis.

As far as the warranty is concerned, maintenance services can be performed at a garage, service station, or dealership — whichever is most convenient.

All that's needed is to have the service man furnish verification of the work done, the material used and the date and mileage the service was performed so that the selling dealer can validate the warranty.

The importance of the regularly-scheduled services such as oil changes, chassis lube and air cleaner service speak for themselves.

The so-called unscheduled services, those whose frequency depends totally on how and where the vehicle operates, usually include such things as brake system checks, engine tune-ups, and wheel alignment, to name a few.

A tune-up every year or 10-12,000 miles is a particularly important maintenance service. Operating a car in an out-of-tune condition can rapidly accelerate engine wear.

For example, worn plugs and points can lead to partial combustion. Some of the unburned fuel goes past the pistons, washes the protective film of oil from the cylinder walls, and permits undue scuffing of the cylinders and pistons.

When unburned fuel gets down in the crankcase and dilutes the oil, the oil can't do its job of protecting bearing surfaces or keeping valve lifters working freely and quietly.