



CHEVROLET

ONLY 4 DAYS REMAINING!

0% APR*
FOR QUALIFIED
BUYERS

PLUS

\$500 BONUS*
ON SELECT CHEVROLET
VEHICLES IN STOCK

OR

\$1000 BONUS*
ON AVALANCHE™
AND SILVERADO* ONLY

GM EMPLOYEES & ELIGIBLE FAMILY MEMBERS ONLY

\$15,457 AFTER \$1,000 CASH BACK
AND \$500 BONUS†

OR

0% APR* + \$1,000*
FOR QUALIFIED BUYERS BONUS

2002 CHEVY™ SILVERADO® 1/2-TON REG. CAB 2WD
AIR CONDITIONING AND
AUTOMATIC TRANSMISSION



GM EMPLOYEES & ELIGIBLE FAMILY MEMBERS ONLY

\$11,762 AFTER \$1,500 CASH BACK
AND \$500 BONUS†

OR

0% APR* + \$500*
FOR QUALIFIED BUYERS BONUS

2002 CHEVY CAVALIER®



GM EMPLOYEES WITH A CURRENT GMAC SMARTLEASE®

\$212/MONTH**
36-MONTH LEASE

\$999 DUE AT LEASE SIGNING
AFTER \$500 BONUS
AND LEASE LOYALTY OFFER

Includes Security Deposit.
Tax, Title and License are extra.

OR

0% APR* + \$500*
FOR QUALIFIED BUYERS BONUS

2002 CHEVY S-10® EXT. CAB 2WD



GM EMPLOYEES & ELIGIBLE FAMILY MEMBERS ONLY

\$215/MONTH**
36-MONTH LEASE

\$999 DUE AT LEASE
SIGNING

No Security Deposit Required.
Tax, Title and License are extra.

OR

0% APR* + \$500*
FOR QUALIFIED BUYERS BONUS

2002 CHEVY MALIBU®



GM EMPLOYEES & ELIGIBLE FAMILY MEMBERS ONLY

\$322/MONTH**
36-MONTH LEASE

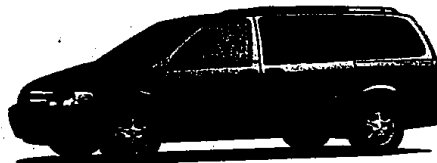
\$999 DUE AT LEASE
SIGNING

Includes Security Deposit.
Tax, Title and License are extra.

OR

0% APR* + \$500*
FOR QUALIFIED BUYERS BONUS

2002 CHEVY VENTURE®



0% APR* plus \$500 Bonus* also available on
Astro® Conversion Van, Astro® Passenger Van, Tahoe® and Suburban®

CHEVROLET WE'LL BE THERE

See dealer for residency and other restrictions.***

SEE YOUR LOCAL CHEVROLET DEALER.

PGP6662701