



1/31/02

Lodge look: Susan Murphy and William Pilipchuk foretold the design trends for 2002 in their decor for a basement at Walnut Brook Estates in Rochester Hills. The trends include the lodge look, seen in this area of the lower level.

Comfort and joy 2002 Design trends are warm, bright

BY MARY KLEMIC
STAFF WRITER
mklemic@oe.homecomm.net

Stews, casseroles and hot cocoa are examples of what is called "comfort food," something that nourishes and nurtures, warming the spirit as well as the body.

"Now there's comfort furniture," interior designer William Pilipchuk said.

Interior design trends for 2002 satisfy in a

nourishing, comfortable way. Traditional features are strong, as is the "lodge look," with its

idea of coziness against outdoor elements. Textures are rich. Colors are warm.

"There are wonderful textures," said Thomas Grabowski, Fellow of the American Society of Interior Designers, of Marshall Field's Interior Design Studio at Northland.

"Texture is becoming very important."

Examples include variations on chintzes; woven leather; rich detailing in opulent bed covers; and brushed steel.

Hammered and brushed metals, such as copper

and bronze, are popular, as are stainless steel and pewter, Grabowski said.

"Brasses are becoming rare," he said. Among copper accessories are items at EXPO Design Center, such as bathtub or kitchen fixtures, ceramic tiles, doorknobs, towel rings and switch plates.

Grabowski saw a return to tradition at the semi-annual International Home Furnishings Market in High Point, N.C., in October, with floral prints, the Victorian era idea of the parlor table as a focal point, and big buffalo plaids.

Wing chair settees that can serve as banquettes at tables are a trend, and baskets are holding interest, used as seats as well as containers.

"There is lots of red, and it's becoming orange; green, and the green is getting yellower," Grabowski said.

Maple and cherry are in, and the popularity of entertainment centers continues.

Forecasters

Pilipchuk and Susan Murphy, both of iContact Designs of Troy, showed precision with their decor for the basement of a residence in Walnut Brook Estates in Rochester Hills.

Many features of 2002 trends are in the project, which was completed earlier



At High Point: Woven leather, as in these pieces by DLA, is popular. The items were shown at the International Home Furnishings Market in High Point, N.C., in October.

or this year, months before the High Point show.

Murphy and Pilipchuk's challenge was to create the illusion of space in an area with low ceilings and few windows.

"We wanted to extend a welcoming feel," Murphy said. Much of Murphy and Pilipchuk's design for the lower level resembles that of a lodge.

This effect - which Walnut Brook Estates developer and homeowner Gary Leigh described as similar to vacationing in the Rockies - can be seen in the area

with a grouping around a ledge-stone hearth. The cabinetry of the nearby entertainment center features faux twig inlay work by Andrzej Sikora of Decora Interior Art Design.

The designers incorporated images of nature throughout the lower level. Custom steel railings by the Mark Belchenko Studio look like branches and twigs. A cherry wood bar by Allen Haspala Fine Woodworking and Custom Cabinets of Waterford has a translucent onyx stone countertop with a branch-like pattern.

Frank Lloyd Wright inspired the bar and other furnishings, as well as such accents as maple and cherry squares.

Copper shines throughout the decor - as in the copper tin ceiling in the

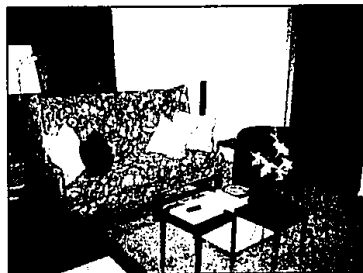
game room, and amid the backsplash at the bar. The backsplash, and surrounding counter area, also features ceramic tile by the Virginia Tile Co.

Pilipchuk and Murphy used fabrics with rich textures, including chenille and velvet burnouts.

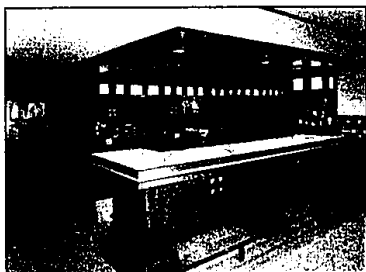
Rooms serve as entertainment centers, as in the wine cellar and playroom.

The wine cellar conveys Old World ambiance, with trompe l'oeil murals by Decora Interior Art Design that look like a vineyard and streetside cafe, and plywood walls stained to look aged. Builder Dennis Glick of Bloomfield Hills made a wine rack out of PVC cylinders, painted to resemble terra cotta.

Walls in the playroom are painted to resemble a circus of 100 years ago, with tent flaps and barkers.



At High Point: This wing chair settee by Hickory Chair, which can serve as a banquette at a table, is an example of the furniture trends for 2002. It was shown at the International Home Furnishings Market in High Point, N.C., in October.



Serving style: The bar area at Walnut Brook Estates is dressed in cherry wood and copper.

DR. BRAD DAVIS

Changing lives

Charities aid Kabul Zoo, help families with gifts of animals.

About Animals,

MARTY FIGLEY

Head start

Books will give head start on 2002 growing season.

Garden Spot, Page C2

JOE GAGNON

Recall update

Update on appliance recalls.

Appliance Doctor, Page C2

INSIDE