

Sleep from page A1

the community outreach subcommittee.

A study by the Center for Applied Research and Educational Improvement at the University of Minnesota, in conjunction with the Minneapolis Public Schools, looked at the impact of changing school starting times. According to an article in the January 1999 Phi Delta Kappan magazine, the study raised questions about whether universal or flexible starting times are best for students.

"It is unlikely that any one schedule could accommodate the needs of all stakeholders," the author said.

Officials haven't decided whether changes are possible this fall in Farmington. Cost is a factor; the district may have to purchase up to four buses and hire four new bus drivers, which could top \$400,000. This comes at a time when the district is anticipating a \$5-6 million budget shortfall.

The change also may not have to be implemented all at once. At the communications subcommittee meeting, Neuman suggested the district might consider a gradual approach.

"It may be economically impractical to do all three immediately. All three high schools don't have to start at the same time. Have kids who want to start school later go to one school. One bus could take them to their home

school and then shuttle them."

Farmington School Board members haven't participated in the discussions, preferring to wait for the committee's final recommendation.

No other public school district in Michigan has made changes based on this sleep time research, although officials with West Bloomfield Public School District have talked about doing so in fall 2002.

Both Farmington Public School Superintendent Bob Maxfield and Northville Public School Superintendent Leonard Reznierski have talked about the subject for two years. Maxfield helped form and has led a consortium of about 10 public school superintendents who also want to explore the issue.

A community discussion started in earnest in Farmington in November, with Maxfield appointing parents and staff to a committee, including people he called "true believers," or supporters of the concept. The members talked about expanding the committee to include community members who may not be as supportive.

A regional forum held Nov. 28 at Wallied Lake Central High School drew an audience of parents from all affected school districts. The local Farmington committee met again in December and formed four subcommittees — teaching and learning, co-cur-

ricular activities, transportation and community outreach.

The four will deliver reports at a Jan. 7 meeting at the Farmington Training Center. The meeting begins at 7 p.m. and is open to the public.

And parents have already begun to talk about the effect altered start times would have on their lives and those of their children.

Community questions

"People are already calling me," said Kim Heath, co-president of the Parent-Teacher Association Council. "They want to know how this relates to the big picture and the budget. Parents also want to know how it will affect transportation changes and the constraints."

The proposed communication plan includes a speakers bureau, whose members would address questions and answers to various organizations like the Optimists, Rotary, Exchange Club, Jaycees and seniors.

"We'd like to have people there in pairs," Zurvalec said. "It's kind of nice to have a second person there to address questions."

Using random telephone calls as a way of polling interest in the community may not generate the kind of information desired, she said.

Neuman also questioned the method. "What does it get us at the end of the day?"

POLICE CALLS

The following reports were filed this week with the Farmington Public Safety Department:

SLEDDING PAST CURFEW

A City of Farmington public safety officer gave verbal warnings to three people — a Livonia man and a Southfield man, both 18, and a Livonia boy, 13 — who were on the Shiawassee sled hill about 3 a.m. Dec. 29. The officer spotted an S-10 Chevy pickup in the parking

lot. He informed the 13-year-old he was in violation of the curfew ordinance. Police contacted his father, who asked that his older brother bring him home.

BLIGHT

Farmington Ordinance Officer John Konecni ticketed the owner of a business on Grand River about 2 p.m. Dec. 17 for trash and discards in the alley, according to a police report.

Konecni said all refuse should be inside the building and not dumped outside the back door.

PROPERTY DESTRUCTION

An Oakland Street resident told police that someone drove across her lawn sometime between Dec. 30 and Dec. 31 causing about \$100 in damage. The homeowner also said that her mailbox was damaged when someone threw a trash can against it.

OBITUARIES

CLARA A. ANDERSON

Services for Clara A. Anderson, 95, formerly of Farmington Hills, will be held at 11 a.m. Saturday, Jan. 5, at St. Gerald Catholic Church in Farmington, with the Rev. Gerald McEnhill and Rev. Kurt Anderson officiating. Burial will take place at Holy Sepulchre Cemetery in Southfield.

Mrs. Anderson was born Oct. 12, 1906 in Minneapolis, Minn. and died Dec. 28, 2001 at Heartland Nursing Home in West Bloomfield. She worked as a registered nurse for Presbyterian Village and was a member of the Daughters of Isabella.

She is survived by her sons, Rev. Kurt Anderson and Michael (Mari) Anderson; daughters, Joyce Farrell, Joan Howard and Linda Rescoe; brother, Joseph (Helen) Fuss; sister, Rosemary Schmidt; 16 grandchildren; and 21 great-grandchildren. She was preceded in death by her husband, Kurt.

Arrangements made by Thayer-Rock Funeral

Home in Farmington.

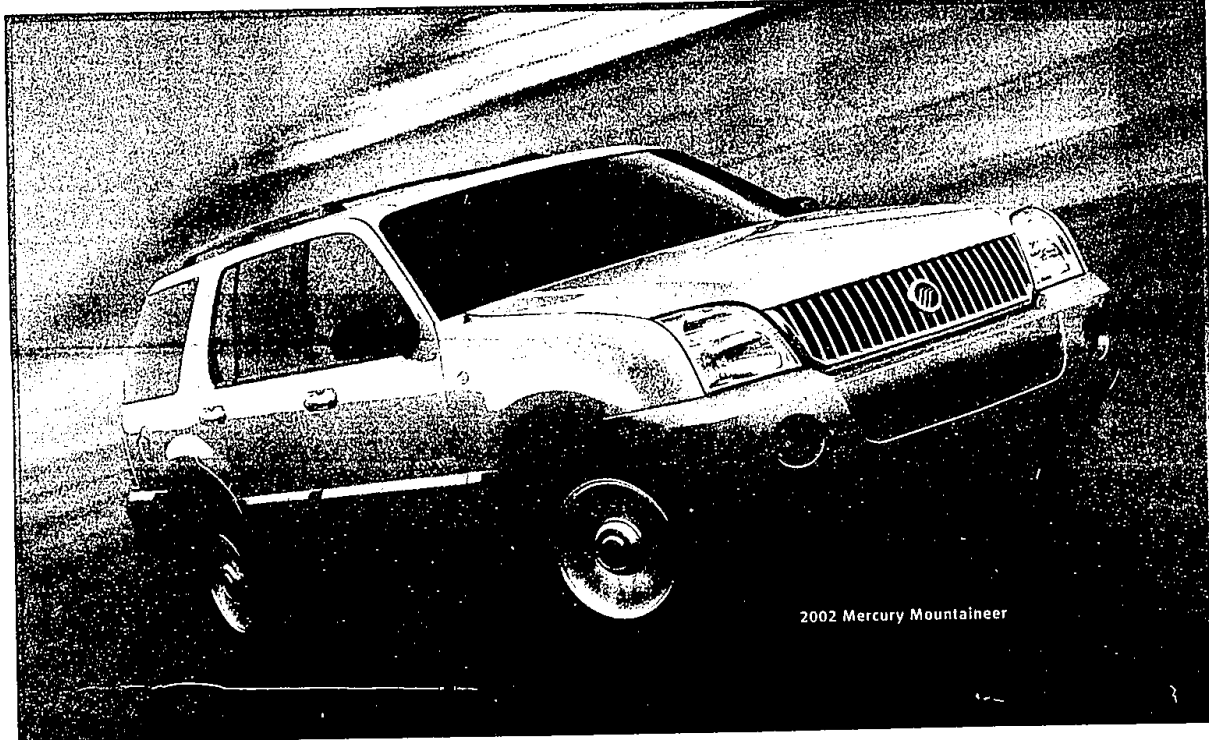
BETTY M. SABIN

Services for Betty M. Sabin, 86, of Farmington Hills, were held Dec. 31 at St. Alexander Catholic Church in Farmington Hills with the Rev. James Wright and Rev. Ronald Victor officiating. Burial took place at Glen Eden Memorial Park in Livonia.

Mrs. Sabin was born April 26, 1915 in Detroit and died Dec. 28, 2001 in Pontiac. She was a homemaker.

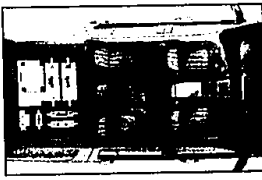
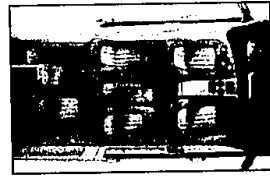
She is survived by her sons, Roy (Isabel), Gary (Connie) and Lawrence (Janet); daughter, Patricia (Robert) Enderle; brother, Robert (Mary) Clos; sister, Mary (Benjamin) Mascotte; 10 grandchildren; and three great-grandchildren. She was preceded in death by her husband Don.

Arrangements made by Thayer-Rock Funeral Home in Farmington.



2002 Mercury Mountaineer

NOW YOU SEE IT.



NOW YOU DON'T.

DISAPPEARING THIRD-ROW SEAT STANDARD.

The Mountaineer's third-row seat folds down easily, virtually disappearing to create up to 81.3 cubic feet of cargo space.

MERCURY MOUNTAINEER WITH CONVENIENCE GROUP

\$399
per month/24-month lease
for returning lessees

\$2,999*
cash due at signing
after \$1,000 cash back
Security deposit waived.
Excludes tax, title and license fees.

OR

0.0% APR
limited-term financing**
on purchase.



MERCURY

For updated offers go to LMAplan.com

*Call 1-888-56-LEASE for details. For cash back, take new retail delivery from dealer stock by 1/14/2002. **NOT ALL BUYERS WILL QUALIFY FOR THE LOWEST CREDIT APR. SEE DEALER FOR QUALIFICATION DETAILS. Dealer participation may affect savings. For APR, take new retail delivery from dealer stock by 1/14/2002.

Visit Your Metro Detroit Mercury Dealer.

ANN ARBOR
Sesi
2100 W. Stadium Blvd.
at Liberty
(734) 668-6100
sesi.com

CLINTON TOWNSHIP
Stu Evans Lakeside
17500 Hall Rd.
at Sunset Plaza
(810) 849-2000
stuevanslakeside.com

DEARBORN
Jack Demmer
21531 Michigan Ave.
between Southfield & Telegraph
(313) 276-8800
demmer.com

DETROIT
Bob Maxey
16901 Mack Ave.
at Calumet
(313) 885-4000
bobmaxey.com

DETROIT
Park Motor
18100 Woodward Ave.
opposite Palmer Park
(313) 869-5000
parkmotor.com

GARDEN CITY
Stu Evans Garden City
32000 Ford Rd.
at West of Birmingham
(734) 475-4300
stuevansgardencity.com

NOVI
Varsity
49251 Grand River
1 mi. W. of Van Dyke at I-24
Two Exit West of I-24 on Van Dyke
1-800-850-NOVI (6684)
varsity.com

PLYMOUTH
Hines Park
40601 Ann Arbor Rd.
at I-75
1-800-550-MERC
hinespark.com

ROCHESTER HILLS
Crisman
3185 South Rochester Rd.
between Edison & Van Dyke
(248) 652-4200
crisman.com

ROSELAND
Bob Maxey
29000 Gratiot
at I-24
(810) 552-6000
bobmaxey.com

SOUTHFIELD
Star
24350 West 12 Mile Rd.
at Telegraph
(248) 354-4900
star.com

SOUTHGATE
Southgate
16800 Fort Street
at Telegraph
(734) 285-8800
southgateclintonmercury.com

STERLING HEIGHTS
Crest
36200 Van Dyke
at I-24
(810) 939-6000
crestline.com

TROY
Bob Borst
1950 West Maple
Opp. Maple Road
(734) 643-6600
borst.com

WATERFORD
Mel Farr
1878 Highland Rd. (M-59)
2 Miles West of I-24
(248) 683-9500
farr.com

YPSILANTI
Sesi
950 East Michigan
1 Mile West of I-24
(734) 482-7133
sesi.com