

# Winter Sale Savings 25% - 40% Off

Come in now for special savings on the furniture you need. Let us make that special room in your home something spectacular!

**Receive 6 Month Deferred Billing or  
One Year Interest Free Financing**

(for Qualified Buyers)



- PENNSYLVANIA HOUSE
- BOB TIMBERLAKE
- KING HICKORY
- HEKMAN
- HUTCHCOCK
- I.M. DAVID
- THOMASVILLE
- NICHOLS & STONE
- LEXINGTON
- CONOVER
- HOOKER
- BUTLER
- DINAIRE
- HARDEN
- JASPER CABINET
- BRADINGTON-YOUNG
- SLIGH
- CANAL DOVER
- SUPERIOR
- CHARLESTON
- FORGE
- RESTONIC

**SALE ENDS JAN. 26, 2002**

## CLASSIC INTERIORS FURNITURE

20292 Middlebelt, Livonia (S. of 8 Mile)  
(248) 474-6900

Mon., Thurs., Fri., 9:30-9:00 • Tues., Wed., Sat. 9:30-5:30; Open Sunday 1-5

Visit Our  
In-Store  
Clearance  
Center

Design  
Service  
Available

## It's easy to diagnose, change a washer pump

### APPLIANCE DOCTOR



JOE GAGNON

stant money maker for the appliance service industry. Home owners should be aware that the washer pump is something they can change with the use of simple basic tools.

A pump failure is usually apparent when the machine stops pumping out the water after the agitation cycle. When you remove the clothes from the washer and you put them into the dryer, do you notice the clothes are still too wet? Does the tub still have a ton of water inside? If so, set the timer onto the spin cycle and see what happens.

Remember that washers will only go into the spin cycle as long as the water is pumping out. Try getting the water out of the washer by placing the drain hose on the floor and letting the water run into the floor drain. If you don't have a floor drain system, one at a time.

Once the washer is empty, put the timer in spin again, remembering to close the lid. If it spins, the problem is usually the pump. The ease of changing a pump on most washers is rather simple, the confusing part of the job for a novice is finding out how to get to it. We know that the pump is inside the cabinet, but how do you get to it? On some makes and models you have to remove the whole cabinet, and on others the front comes off.

Some have a rear access plate that is removed to gain access. Pumps are made of plastic and have hoses connected to them, one from the tub itself and the other to the drain line. It is as simple as that. To make it as simple as I have just described I suggest you do the following.

Take the model number off the washer and drive over to an

appliance repair store and ask the service person to describe to you how to get to the pump on your washer. They will show you how and what a pump looks like and they will sell you one. Ask if it is returnable if the pump should not be the problem.

The sense of pride in doing something like this on your own is a great boost to your mechanical aptitude and bragging rights. An example is a friend of mine who has more money than he needs and plays with the Red Wings. He tells everyone he makes mistakes during a game but he still managed to change the pump on his washing machine. This guy never fixed a thing in his life and he is extremely proud of the job he did.

If he can, then you can do it as well. Think of the savings which could afford a nice dinner at your local restaurant. Remember to sit at the head of the table. Stay tuned.

Joe Gagnon can be heard Saturday and Sunday on 760 WJR. He is a member and past president of the Society of Consumer Affairs Professionals. His phone number is (313) 873-8788.

### GARDENING CALENDAR

#### MICHIGAN SCHOOL OF GARDENING CLASS UPDATE

There's still time to register for January classes by completing a registration form and mailing it in along with a check for the registration fee. Register at least one week prior to the class date.

Download a registration form and a full copy of class schedules at [www.michigangardening.com](http://www.michigangardening.com) or call 248-4-GARDEN (442-7386) for a class schedule and registration form. Upcoming classes are:

**CLASSES IN LIVONIA**  
Landscape Design - Thursday, Jan. 31

Class description: Planning new landscapes and renovations. How to select and place trees,

shrubs and other plants on a large scale. How to visualize planned changes and capture ideas on paper. Developing overall concept plans, component area plans, graphic illustrations, plant and material lists. Covers estimating labor and materials needed. Students explore concepts in lab work and are encouraged to begin designs now which may be used in Independent Projects (see "Curriculum" for more on Independent Projects).

Pre-requisite: "Focus on Design" and "Garden Design" or equivalent experience  
Registration fee: \$212.50

Livonia, nights #208-12LN, seven Thursdays 1/31, 2/7, 2/14, 2/21, 2/28, 3/7, 3/14 6:30 to 9:30 p.m.  
**CLASSES IN BIRMINGHAM**

#### HAM

The Michigan School of Gardening offers specialty and just-for-fun classes at The Community House in Birmingham. To register for these classes or for more information, please contact the Birmingham Community House at (248) 644-6832

**The Essence of a Chinese Garden** - 7:30-9:30 p.m. Tuesday, Jan. 29

Class description: A Chinese garden's essence lies in its intimate association with nature, in its seeking of the unusual and unexpected and in its ethical and philosophical preoccupations. Come through the moon gate, experience the Chinese garden and consider how to apply its essence to your garden.

## GRAND OPENING SALE

Help Us Celebrate The Opening Of Our Farmington Hills Store

### Marble - Granite - Silestone®

Why buy countertops at retail when you can buy direct.

Since we fabricate at our own locations, we beat the "Big Box" store pricing. We offer quick delivery and personalized service.

#### Granite 3cm thick!

\$45.95	S/F	Rosa Beta
\$45.95	S/F	Luna
\$49.95	S/F	Baltic
\$49.95	S/F	Impala
\$52.95	Verde	Butterfly

All prices include installation & measurement, straight polished edge 20 s/f minimum



#### Silestone® 3cm thick!

ALL  
REMAINING  
INVENTORY

**\$39.95 s/f installed!**  
includes straight polished edge  
20 s/f minimum

### CERAMIC TILE INVENTORY BLOW-OUT SALE!

**49¢** S/F & Up  
Tremendous In-Store  
Sale Selection!

Check our prices first!

## Ceramic Tile Sales Inc. Marble & Granite Shop

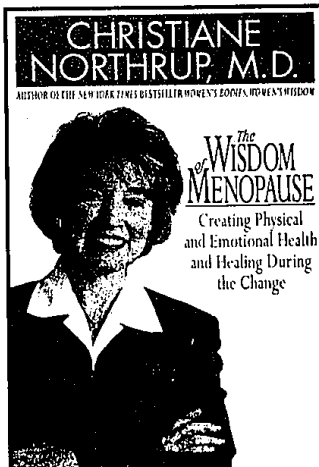
<b>Southfield</b> 23455 Telegraph Rd. 248-356-6430	<b>Farmington Hills</b> 24301 Indoplex Circle (248) 426-0093	<b>Rochester</b> 1972 Star Batt Dr. 248-853-4654
----------------------------------------------------------	--------------------------------------------------------------------	--------------------------------------------------------

Visit one of our Showrooms!

Installation includes Wayne, Oakland, and Macomb Counties. Others at additional cost. Offer not valid with any other discount. All previous orders excluded. Subject to stock on hand.

**Showroom Hours: M-T-Th 8:30-5:00;  
W-F 8:30-8:00; Sat 9:00-5:00**

### Crittenton Hospital Medical Center presents CHRISTIANE NORTHRUP, M.D. "The Wisdom of Menopause"



The bottom line is this: The menopausal transition no longer means you've entered life's final chapter. Rather, it is a passageway to a new beginning, a second spring.

- Christiane Northrup, M.D.

### WOMEN'S WELLNESS CONFERENCE

7 p.m. Thursday, Feb. 14

Shotwell-Gustafson Pavilion, Oakland University

Tickets are \$25. Seating is limited, so please call

248-652-5269 to purchase your tickets today.

E-mail: [dept\\_healthed@crittenton.com](mailto:dept_healthed@crittenton.com)

