

## Hills SOS office will close Tuesday for upgrades

The Farmington Hills Secretary of State branch office, 36572 Grand River, will close for one day on Tuesday, Feb. 26, for the installation of new computer equipment.

Residents wishing to transact business on this date are encouraged to visit one of the following area branch offices:


West Bloomfield - 4301 Orchard Lake;  
Farmdale - 261 E. Nine Mile;  
Livonia West - 19229 Newburgh.

**ADVANCED LASER CLINICS**  
hair removal and skin rejuvenation

Prices Starting At:

|                  |          |
|------------------|----------|
| UPPER LIP.....   | \$99.95  |
| EYE BROWS.....   | \$114.95 |
| CHIN.....        | \$124.95 |
| NECK.....        | \$134.95 |
| BIKINI LINE..... | \$134.95 |
| BACK.....        | \$194.95 |

Financing Available



**LASER HAIR REMOVAL & MICRODERMABRASION**

Our Lightsheer Laser is FDA Approved!

Guaranteed Results in Writing...Call Today!

FREE personal consults  
Payment Plans Available

23700 Orchard Lake Rd.  
Suite B  
Farmington Hills  
MI 48332

Call Now  
**Save 5%**  
**248.473.8500**

www.advancedlaserclinics.com

**JCC Summer Camps**



A Camping Tradition  
Since 1935

**LAST CHANCE TO SAVE!**

Register before March 1 for **BIG SAVINGS!**

**SESSION DATES:**  
Session I June 17-July 11 • Session II July 15-Aug. 8  
One-week sports, arts and science camps  
June 17-Aug. 16

**LET THE ADVENTURE BEGIN!**

For more information or a detailed brochure, call the JCC Summer Camps office,  
**(248) 432-5578.**

**JCC** Jewish Community Center  
ACREDITED CAMP  
You belong here

## FHPD officers hurt in traffic accidents

By PAUL H. PACE  
STAFF WRITER  
ppace@oe.hometown.com

Two Farmington Hills Police officers are recuperating from traffic injuries suffered this past week.

Both men remain in stable condition after one officer was hit by a van and another fell off his police motorcycle. The incidents were unrelated.

Around 10:45 p.m. Saturday, Police Chief William Dwyer said, Officer Anthony Bateman, 26, was struck by a van after the helping clear up a road closing on M-6 near Grand River.

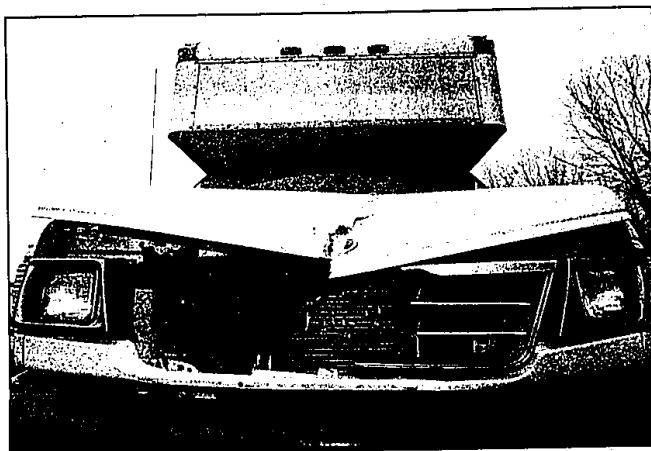
According to the chief, the road was closed temporarily due to icy conditions. A van driven by a Commerce Township man struck Bateman, who was picking up road flares at the scene. The impact threw Bateman 135 feet onto pavement, Dwyer said.

Bateman remains at Botsford Hospital where he is being treated for a chipped vertebrae and injuries to his ankles, shoulder, knees and right ear.

"He's very lucky," Dwyer said. "He's lucky he wasn't more seriously injured. I think it is because he's in excellent physical shape. He's a goalie for a hockey team."

"He's strong and upbeat," the chief added. "We feel he'll fully recover."

The other accident involves Officer Michael Fluhart, 38. Dwyer said the officer was leaving



Crash damage: The damaged front of the panel van that hit a Farmington Hills police officer shows the force of impact.

STAFF PHOTO BY BILL BREKLER

the station around 8:40 a.m. Monday to be part of the escort procession for slain Detroit Police Officer Michael Scanlon when the rear brakes on his police motorcycle locked up after he took a turn. He was thrown over the handlebars, said Dwyer.

Fluhart suffered a broken collar bone, a concussion and abrasions.

The chief said the officer was expected to be taken from Botsford Hospital to Beaumont Hospital in Royal Oak for surgery this week.

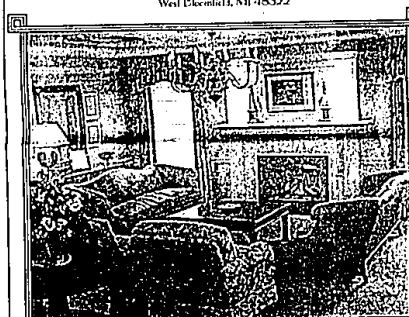
The driver who hit Bateman, Scott A. Manciero, 39, of Commerce Township, was arraigned in 47th District Court on Sunday for delivery and manufacturing of marijuana. Police said they found about 14 pounds of marijuana in his vehicle. A \$25,000 cash or surety bond was set, and

his preliminary exam will be held on March 1 in 47th District Court.

A warrant was also issued Wednesday charging that Manciero violated a new state law that cites people for failing to use care when passing stationary emergency vehicles, causing injury to emergency personnel. It is a felony punishable by a fine up to \$1,000 and/or two years imprisonment.

Manciero is expected to be arraigned on this charge Friday, Dwyer said.

**Regent Street of West Bloomfield**  
4460 Orchard Lake Road  
West Bloomfield, MI 48322



The Finest of Assisted Living, with CATERED SERVICES in beautiful surroundings created especially for older adults

Studios and suites with private baths  
Three well planned daily meals • Licensed Nurses Resident Assistants 24 hours 7 days  
• Emergency call systems • Medication management • Alzheimer's and dementia care • Housekeeping and linen services • Pool and exercise room • Scheduled activities 7 days weekly • Game room • Hair Salon • Sundries Shop • Transportation • Includes all utilities except telephone  
Call Roger Mahler at 248-683-1010 for additional information

**Joint Commission**  
an Accredited of National Recognition

This is your alternative to a nursing home

Cash and Carry Only!

**1/2 OFF SATURDAYS**

Flowers from Joe's  
by Carolynn

**ALL FRESH FLOWERS\***  
In Stock  
1/2 price  
Every Saturday  
9:00 am - 3:00 pm

"Come on in this Saturday and take a fresh bouquet home!"  
\*Does not include any special orders!

Flowers from Joe's by Carolynn  
33018 W. 7 Mile • Livonia, MI 48152  
**248.477.8616**

**You'll Pay Less For Your Home Improvement Just For Being You.**



**HOME EQUITY**  
As low as **1.95%**  
**INTRODUCTORY**  
**4.75%**  
**CURRENT RATE**

Call toll-free 1-800-441-8999 or apply online at [www.cuone.org](http://www.cuone.org)

Introductory rates are effective on the date of first draw and continue at that rate for four months. Amount of first draw determines rate. You must take your first draw by July 31, 2002.

19 Branch Locations Throughout Michigan: Call 1-800-441-8999

**Credit Union ONE**

**The ONE anyone can join.**

\*Annual Percentage Rate: Offer good on minimum draw of \$25,001. Draws of \$10,001 to \$25,000 get introductory rate 2.95%. Introductory rate is for new lines of credit only. Subject to qualification. Current rates effective as of January 15, 2002. You must apply for your line by June 30, 2002 and take first draw by July 31, 2002. Amount of first draw determines rate. Rates quoted are effective as of January 15, 2002. You may make more frequent payments which will reduce your finance charges. You may also repay or prepay all or any portion of the amounts you owe at any time without penalty. Except during an introductory rate period, should you pay more than the minimum required payment during an introductory period, you will incur a prepayment penalty equal to the difference between the introductory and the standard rate.

**Read Observer sports**

Questions about cancer do not go away at bedtime

Neither do we

For answers, information and support, call us anytime, day or night.

**American Cancer Society**

**cancer.org**  
**800-ACS-2345**