

Festive events showcase fine food, wine in June

Eat, drink and be merry during these festive food fests being presented throughout metro Detroit.

■ Garden Party - Sunday, June 2 on the grounds of the St. Vincent and Sarah Fisher Center, 27400 W. 12 Mile Road in Farmington Hills. Presented by Ford Motor Company, this 15th annual event will incorporate a 1920s theme, including vintage vehicles, costumes and many surprises. Its goal is to help bridge the gap between public and other funding, and the needs of various programs that serve scores of children, teen parents and families.

Fifty of the finest restaurants in Detroit will offer samples of their specialties. Guests will be treated to delectable hors d'oeuvres, entrées and desserts from establishments such as 220, Bacchus Bar at Little Italy, Cuisine, Fiona's Forte, The Golden Mushroom, McCormick & Schmick's, Mon Jin Lau, The Palm, Ristorante Café Cortina, Sweet Lorraine's Café & Bar, The Whitney and many more. The event also features a live auction. Guardian Ticket Packages are \$1,500 and include eight tickets to the VIP Reception, Garden Party with reserved table seating and valet parking; Benefactor Ticket Packages are \$1,000 and include six tickets to the VIP Reception, Garden Party and valet parking; Mentor Ticket Packages are \$750 and include four tickets to the VIP Reception, Garden Party and valet parking; Patron Ticket Packages are \$500 and include two tickets to the VIP Reception, Garden Party and valet parking.

Individual tickets may be purchased for \$150 each. To purchase tickets or more information, call (248) 626-7527 Ext. 3900.

■ Taste! Spring in the Courtyard - Now in its sixth year, the event presented by Ford Motor Company and The Ritz-Carlton, Dearborn, Monday, Thursday, June 3-13 features wine tastings and gourmet dinners to benefit Sparky Anderson's CATCH charity. For information, and reservations, call (313) 441-2000.

The Winemaker dinner 6:30 p.m. Friday, June 7 features a five course meal prepared by chefs at The Ritz-Carlton accompanied by specially chosen flights of fine. The evening



Sally and Dick Scheer
Event chairs

includes entertainment by the Trinidad Tripoli Steel Band. Tickets are \$125.

The Ritz-Carlton will host a wine tasting reception in the courtyard 6 p.m. Thursday, June 13. Five restaurants Cuisine, Il Posto, Tribute, Café Bon Homme and The Ritz-Carlton Grill, will prepare special tables of hors d'oeuvres to accompany a special sampling of wines. Tickets are \$50.

In celebration of Taste! The Ritz-Carlton Grill will feature a three-course menu highlighting the best regional bounty all week long. From Lake Superior Whitefish to the fresh produce from local farms. The \$45 prix menu offers guests the opportunity to celebrate area edibles with the option to include the chef's selection of wine pairings.

■ WineFest 2002: Aged to Perfection - WineFest Auction 6 p.m. Saturday, June 8, Ypsilanti Marriott at Eagle Crest, Ypsilanti. Tickets \$135 (\$72 tax deductible) for non-members and \$125 (\$60 deductible) for Ann Arbor Art Center members. Proceeds from the 20th annual event benefit the Ann Arbor Art Center, 117 W. Liberty St. For more information about WineFest 2002, or to purchase tickets, call (734) 944-5004, Ext. 101 or visit www.winefest.com.

National honorary chairman is David Kouzmanoff of Chalona Wine Estates. The highlight of the evening will be two silent auctions followed by a live auction featuring lots ranging from fine wine and wine accoutrements to travel and dinner packages. A Rare and Fine Wine Bar offers guests the opportunity to sample fine wines, including limited releases, that are not available to the public. Micro-brewed beers will be featured in the Bubble Lounge. Dessert, coffee and live music will follow the auction and the evening will conclude with festivities in the Port, Cigar and Cognac Tent where a professional cigar roller will be present.

Austrian glassblower Harald Eberhart has been chosen as the featured artist for WineFest 2002. He has created an elegant vessel to be displayed and sold at the live auction. Photos of Eberhart's work can be viewed at <http://www-personal.engin.umich.edu/~eberhart>.

Dick and Sally Scheer, owners of the Village Corner in Ann Arbor, are this year's event chairs. Co-chairs are Craig Common, owner of The Commons Grill in downtown Chelsea, Jill Carr who serves on the board of directors for the University of Michigan Musical Society, the Purple Rose Theater, the Center for Community Service & Learning at the University of Michigan, and at the Ann Arbor Art Center, and Marsha Chamberlin, founder of the Ann Arbor Art Center.

■ Michigan Wine & Food Festival - Friday-Sunday, June 28-30, on the grounds of the Meadow Brook Music Festival in Rochester Hills. Sample a taste of Michigan including wines and specialty foods. Twenty Michigan wineries will present more than 100 wines for sampling. Guests can try award-winning wines and purchase their favorites at the on-site store. Winemakers will be present to answer questions.

You'll also have the chance to try a variety of locally produced gourmet food times including: baked dipping oils, smoked fish, specialty cheeses, and several varieties of honey, jams and jellies.

Admission is \$19 and includes eight wine samples, souvenir wine glass, cooking seminars, music by Johnny Trudell, Blackman & Arnold and other local musicians. Advance tickets are available by calling (800) 600-0307. Tickets also available at the festival. Tickets valid for one-day admission 4-10 p.m. Friday, noon to 10 p.m. Saturday, or noon to 5 p.m. Sunday. For more information, visit www.michiganwines.com or call the number listed above.

able to the public. Micro-brewed beers will be featured in the Bubble Lounge. Dessert, coffee and live music will follow the auction and the evening will conclude with festivities in the Port, Cigar and Cognac Tent where a professional cigar roller will be present.

Austrian glassblower Harald Eberhart has been chosen as the featured artist for WineFest 2002. He has created an elegant vessel to be displayed and sold at the live auction. Photos of Eberhart's work can be viewed at <http://www-personal.engin.umich.edu/~eberhart>.

Dick and Sally Scheer, owners of the Village Corner in Ann Arbor, are this year's event chairs. Co-chairs are Craig Common, owner of The Commons Grill in downtown Chelsea, Jill Carr who serves on the board of directors for the University of Michigan Musical Society, the Purple Rose Theater, the Center for Community Service & Learning at the University of Michigan, and at the Ann Arbor Art Center, and Marsha Chamberlin, founder of the Ann Arbor Art Center.

■ Michigan Wine & Food Festival - Friday-Sunday, June 28-30, on the grounds of the Meadow Brook Music Festival in Rochester Hills. Sample a taste of Michigan including wines and specialty foods. Twenty Michigan wineries will present more than 100 wines for sampling. Guests can try award-winning wines and purchase their favorites at the on-site store. Winemakers will be present to answer questions.

You'll also have the chance to try a variety of locally produced gourmet food times including: baked dipping oils, smoked fish, specialty cheeses, and several varieties of honey, jams and jellies.

Admission is \$19 and includes eight wine samples, souvenir wine glass, cooking seminars, music by Johnny Trudell, Blackman & Arnold and other local musicians. Advance tickets are available by calling (800) 600-0307. Tickets also available at the festival. Tickets valid for one-day admission 4-10 p.m. Friday, noon to 10 p.m. Saturday, or noon to 5 p.m. Sunday. For more information, visit www.michiganwines.com or call the number listed above.

able to the public. Micro-brewed beers will be featured in the Bubble Lounge. Dessert, coffee and live music will follow the auction and the evening will conclude with festivities in the Port, Cigar and Cognac Tent where a professional cigar roller will be present.

Austrian glassblower Harald Eberhart has been chosen as the featured artist for WineFest 2002. He has created an elegant vessel to be displayed and sold at the live auction. Photos of Eberhart's work can be viewed at <http://www-personal.engin.umich.edu/~eberhart>.

Dick and Sally Scheer, owners of the Village Corner in Ann Arbor, are this year's event chairs. Co-chairs are Craig Common, owner of The Commons Grill in downtown Chelsea, Jill Carr who serves on the board of directors for the University of Michigan Musical Society, the Purple Rose Theater, the Center for Community Service & Learning at the University of Michigan, and at the Ann Arbor Art Center, and Marsha Chamberlin, founder of the Ann Arbor Art Center.

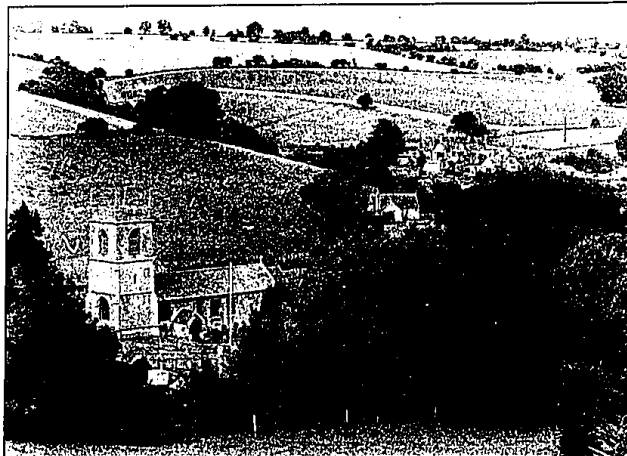
■ Michigan Wine & Food Festival - Friday-Sunday, June 28-30, on the grounds of the Meadow Brook Music Festival in Rochester Hills. Sample a taste of Michigan including wines and specialty foods. Twenty Michigan wineries will present more than 100 wines for sampling. Guests can try award-winning wines and purchase their favorites at the on-site store. Winemakers will be present to answer questions.

You'll also have the chance to try a variety of locally produced gourmet food times including: baked dipping oils, smoked fish, specialty cheeses, and several varieties of honey, jams and jellies.

Admission is \$19 and includes eight wine samples, souvenir wine glass, cooking seminars, music by Johnny Trudell, Blackman & Arnold and other local musicians. Advance tickets are available by calling (800) 600-0307. Tickets also available at the festival. Tickets valid for one-day admission 4-10 p.m. Friday, noon to 10 p.m. Saturday, or noon to 5 p.m. Sunday. For more information, visit www.michiganwines.com or call the number listed above.

able to the public. Micro-brewed beers will be featured in the Bubble Lounge. Dessert, coffee and live music will follow the auction and the evening will conclude with festivities in the Port, Cigar and Cognac Tent where a professional cigar roller will be present.

Austrian glassblower Harald Eberhart has been chosen as the featured artist for WineFest 2002. He has created an elegant vessel to be displayed and sold at the live auction. Photos of Eberhart's work can be viewed at <http://www-personal.engin.umich.edu/~eberhart>.



Landscape: A high horizon line, careful positioning of the church in the viewfinder, and just enough of the fields, all combine for a strong Monte Nagler landscape taken in the Cotswolds of England.

Give landscape photos a center of interest

FOCUS ON PHOTOGRAPHY



MONTA NAGLER

With many photographic subjects, the image consists primarily of a subject and a background, and the technique of composition is creating a satisfactory balance between them.

With landscape the image is not so readily defined and more attention must be paid to color, tone, and texture and the creation of harmony within these elements. As with most photographs, a successful landscape picture should have an identifiable center of attention supported by the other elements in the composition.

This center of interest could be something quite obvious, such as, a certain area of pattern or texture or a color that stands out from the rest.

Placing the emphasis on one area of the picture gives structure to your composition and helps guide the viewer's eye, which might otherwise wander about looking for something to settle on.

Pay attention to the horizon line. A low horizon is used when you want to emphasize a dramatic sky and give a feeling of spaciousness to your shot.

A high horizon will draw attention toward the foreground and will minimize an uninteresting sky. Can you ever place the horizon in the center of the viewfinder? Yes, if the image has an overall

symmetrical quality that you want to emphasize.

Often, lighting is the single most important element in a landscape picture. Be on the lookout for fog and mist that will add a romantic quality to your shot.

Sunbeams breaking through storm clouds are easily captured on film and will add exciting impact to your landscapes.

Time of day will have a dramatic effect on a landscape image. Try to shoot in early morning or late afternoon when shadows are enhanced and texture and form are accentuated. If you do, your shot will be much more exciting than if you had shot under a noontime sun.

Become aware of color changes during the course of the day. Light quality has more red content early morning and late afternoon producing warmer, more mellow pictures than those taken at noon.

Perhaps a good trick in landscape photography is to imagine the landscape you see through your viewfinder as a vast tabletop still life and the sun as your spotlight. The idea is to "place" your spotlight in the best location and "arrange" the elements you see in the best possible way to make a photograph with impact-one that produces a harmonious balance out of nature.

Monte Nagler is a fine art photographer based in Farmington Hills. You can leave him a message by dialing (734) 953-2047 on a touch-tone phone.

Concert series showcase tango, and other classics

Do something classic - enjoy an evening of fine music offered by area groups.

■ It Takes You to Tango - Detroit Chamber Winds & Strings intimate Nightnotes concert series will feature cellist Debra Fayroian, violinist Stephen Shippa and pianist Ellen Rowe in an evening of tango music Wednesday, May 29 at Hagopian World of Rugs in Novi, and Friday, May 31 at Hagopian World of Rugs in Birmingham. The evening begins with a reception at 7:30 p.m. followed by the concert at 8 p.m. The threesome will be performing the music of Astor Piazzolla and other tango composers.



Valda Kelly
Violinist

students, available at the door or in advance by calling (248) 659-2095. Hagopian's Novi showroom is at 43223 12 Mile Road, east of

Novi Road. The Birmingham location is at 850 S. Old Woodward. Fayroian is Nightnotes artistic director.

Shippa is a professor at the University of Michigan, and Rowe is director of Jazz Studies at U-M.

■ Spring concert - The Madrigal Chorus of Southfield celebrates 10 years with artistic director Robert A. Martin with a concert 4 p.m. Sunday, June 2 at St. Hugo of the Hills Stone Chapel, 2215 Opdyke, Bloomfield Hills. Advance tickets are \$15, call (810) 465-5973, or \$18 at the door.

The performance will feature a variety of sacred and secular songs, highly spirited music and music of serene beauty.

■ Memorial concert - Cellist Nadine Delaur, violinist Valda Kelly and pianist Michele Cooker will be featured in the Irving Ritter Memorial Concert 7:30 p.m. Monday, June 10 in Handelman Hall, D. Dan and Betty Kahn Building, at the Jewish Community Center, 6600 W. Maple Road, West Bloomfield.

There is no charge, and the concert is open to the public. It is in honor of Ritter, who for many years was the assistant

director of the Institute of Retired Professionals. An educator and musician who died last October, Ritter shared his

knowledge and skills in the numerous programs he prepared for the Institute and its members.

Crazy Al's Password

Play Crazy Al's Password every Monday between 8:00 a.m. - 9:00 a.m. on WPON 1460 a.m. Be the correct caller with the password and win a great prize.

Listen to Crazy Al's Radio Party WPON 1460 AM Mon.-Fri. 6:00 A.M. - 9:00 A.M. & 2:00 P.M. - 4:00 P.M.

Call 248-332-1460



"Password" The Beatles

Crazy Al's Radio Party
Truly the greatest rock and roll show you've ever heard!
LISTEN TO RARE ROCK AND ROLL ON
WPON Radio Oldies 1460 AM
Oldies You Just Don't Hear Any Place Else!
Crazy Al's Radio Party Mon.-Fri. 6-9 a.m., afternoons 2-4 p.m.
LISTEN ON THE WEB www.wpon.com



Summer 2002
July 29 - August 31
Make Art Every Day!

Member Registration - June 24
Guest Registration - July 1
9am-7pm

Enjoy Our Classes and Workshops

Adult & Child	Jewelry	Youth Acrylic
Animal Anatomy	Metals	Youth Ceramics
Art History	Mixed Media	Youth Cartooning
Auto Design	Open Studios	Youth Drawing
Ceramics	Painting	Youth Engraving
Colored Pencil	Pastels	Portrait & Figure
Critiques	Photography	Youth Jewelry
Design	Portfolio Prep	Youth Mixed Media
Drawing	Precious Metal	Youth Painting
Fibers	Clay	Youth Photography
Human Anatomy	Printmaking	Youth Sculpture
Calligraphy	Trips & Tours	Youth Workshops
	Watercolor	& Camps



1516 South Cranbrook Road
Birmingham, Michigan 48009-1855
(248) 944-0866 www.bartcenter.org
SPONSORED BY THE OBSERVER & ECCENTRIC NEWSPAPERS

THE NEW
Science
CENTER
NOW PLAYING
IMAX® DOME THEATRE
THE NEW DETROIT SCIENCE CENTER
IMAX
SPACE STATION

A SELECT FEW HAVE BEEN ABOARD... NOW IT'S YOUR TURN!
NARRATED BY TOM CRUISE
FILM TIMES & INFORMATION: 313.577.8400
www.detroitsciencecenter.org