

Crime from page A1

Drug violations boomed from 379 cases to 580, a 53-percent increase. Drunken driving arrests increased from 333 to 388, up 16.5 percent.

Dwyer said the numbers show officers are making a stronger effort with drug and drunken driving arrests.

He said a downturned economy that leaves people unemployed and depressed definitely leads to an increase in alcohol and drug use, which can also lead to criminal actions.

"That's a long established pattern," he said. "When people are working, there are less people out at night drinking."

Dwyer said the small increase in burglaries, from 386 to 388 was attributed to a single serial burglar who committed 23 burglaries in several apartment communities last year. Compared to 1984, when burglaries totaled 932, today's number is a significant sign in the right direction, the chief said.

Forcible sex offense incidents also rose, from 40 to 56. Type B offenses, such as drunken driving and disorderly conduct, rose by a total of 7.1 percent.

Traffic offenses, illness and injury calls and traffic complaints rose from 28,790 to 30,041, up 4.3 percent.

Dwyer said the increase in serious crimes is happening in most nearby communities as well.

"You have to give credit to the officers — they're doing their jobs," he said of the numbers.

"I believe this is one of the safest communities in the state," he said. "The officers here are highly motivated."

Dwyer noted the department's effort to make the community feel part of the police department with 49 community policing programs is as strong a focus as ever.

"The city is more safe from a partnership with the community," he said. "Even though arrests are

up dramatically, we're still heavily involved in the community. It's part of our mission."

Among the department's awards for outstanding service were from the Michigan Municipal League, the Michigan Office of Highway Safety Planning, the Michigan Association of Chiefs of Police, Mothers Against Drunk Driving, the International Narcotics Enforcement Officer's Association, the Southeast Michigan Council of Governments and the Farmington/Farmington Hills Multicultural, Multiracial Community Council.

Offices from page A1

bon cutting at 28580 Orchard Lake Road, between 12 and 13 Mile, across from the Weight Watchers building.

"Good luck in the next several months," said Flaherty.

Akouri said the office will serve as the central place for him and his campaign manager, Mike Brownfield.

It will house efforts by volunteers and friends to develop the strategies to run a successful campaign, he said.

"The campaign is so much easier with a central loca-

tion," Brownfield said. "Before we would go anywhere we could find a place to have meetings."

"Every day we're adding more things to the office to make it complete," he added. Akouri said he will be in the office from morning until night with the exception of meetings and walking door-to-door.

He said he is investigating the possibility of opening an office in downtown Farmington as well.

Akouri can be reached at (248) 737-2869.

OBITUARIES

MARY L. NIEMI

Mary Louise Niemi, 73, of Farmington, died May 16, 2002. Mrs. Niemi was born Aug. 7, 1929 in Detroit. She was a home-maker.

She is survived by her daughters, Mary (Tony) Cassar and Jeanne (Nemi) and son, Lawrence (Renee). She is preceded in death by her husband, Roy, and daughters, Margaret and Ann Marie.

Arrangements made by Heeney-Sundquist Funeral Home in Farmington.

DIANA M. SPARKS

Services for Diana Mae Sparks, 68, of Warren, were held May 24 at Thayer-Rock Funeral Home in Farmington with Dr. Paul Sutton officiating. Burial took place at Oakland Hills Memorial Gardens in Novi.

Mrs. Sparks was born Jan. 3, 1934 in Detroit and died May 20, 2002 at St. John Hospital in Warren. She worked as a receptionist and was a member of the Swedish Club.

She is survived by her husband Ralph; sons, Randall (Linda) and Gregory (Yvette); daughters, Cheryl Sparks and Susan (Angelo) Taormina; brothers, Pete, John and Gus Johnson; sister, Sonya Cardinale; and nine grandchildren. She is preceded in death by her sister, Vickie Smyth.

Memorial contributions may be made to the Swedish Club, 22398 Ruth, Farmington Hills, MI.

PATRICIA ELVIDGE

Services for Patricia Elvidge, 63, of Farmington Hills, will be held at 7 p.m. today, May 26 at McCabe Funeral Home in Farmington Hills with visitation beginning at 3 p.m.

Ms. Elvidge was born in Covington, Ky. and died May 19, 2002 at Botsford Hospital in Farmington Hills. She was the property manager at Olena of Cedarbrooke Apartments in Farmington Hills since 1979. She had a no-nonsense attitude that "got the job done" and considered her tenants as her kids no matter what their age.

She is survived by her daughter, Rae Elvidge; sister, Shirley Robinson; and several nieces and nephews.

Memorial contributions may be made to the U of M Liver Research and Training in Memorial of Patricia Elvidge c/o Liver Management Office 9312 Taubman Center, Ann Arbor, MI 48109-0362.

JAMES T. HAMMER

A celebration of life memorial service for James "Jamie" Thomas Hammer 37, formerly of Farmington Hills will be held 11 a.m. Saturday, June 15, at St. Clare of Assisi Church in Farmington Hills.

Mr. Hammer

was born Feb.

27, 1965 in

Redford and

died May 19,

2002 in

Hawaii. He

worked as a

custodian for

Farmington

Public Schools

and as a

landscape engineer

at Hilton Hawai-

ian Village in Hawaii. He was an

awarded swimmer, experienced

hiker and enjoyed being on the

beaches of Hawaii.

He is survived by his wife,

Patty; daughters, Punani and

Jamies Jo; son, John; father,

Jack; sisters, Nancy Boyer and

Mary Jo (Rick) Halleck; brother,

Tim; special uncle of Shane

Hammer, Thor Boyer, Shawn,

Jody and Jonathan Halleck. He

is preceded in death by his mother

Betty Jo and brother John.

Memorial contributions can be

made to the Capuchin Soup

Kitchen.



Jamie Hammer

OPEN EARLY MONDAY AT 8:00 AM WITH FOUR-HOUR SHOPPING PASSES THAT INCLUDE ITEMS USUALLY NOT ELIGIBLE FOR SAVINGS THIS BIG!

DOORBUSTER
8:00 AM - NOON
SHOPPING PASS

TAKE AN EXTRA
25% OFF

ALL SALE AND CLEARANCE PURCHASES

valid 8:00 am to noon, Monday, May 27 only

DOORBUSTER
8:00 AM - NOON
SHOPPING PASS

TAKE AN EXTRA
25% OFF

ALL SALE AND CLEARANCE

SHOE PURCHASES

valid 8:00 am to noon, Monday, May 27 only

memorial day sale

25-50% OFF GREAT SUMMER ITEMS STOREWIDE!

LAST TWO DAYS—SUNDAY, MAY 26 AND MONDAY, MAY 27



40% OFF Parisian Signature silk shantung separates, including cropped pants, sleeveless tops, sweaters and more. Reg. 40.00-60.00, sale 24.00-36.00. IN LADIES' SPORTSWEAR. SELECTION VARIES BY STORE.



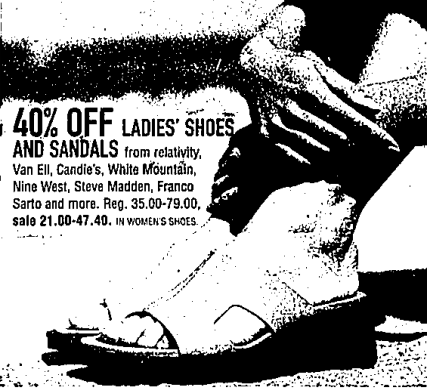
ESTÉE LAUDER'S
"AMERICA THE BEAUTIFUL"
Yours for 27.50 with any Estée Lauder purchase of 100.00 or more. IN COSMETICS. QUANTITIES LIMITED. AVAILABLE WHILE SUPPLIES LAST.



SALE 19.99 Large selection of Newport Blue woven sport shirts and shorts. Reg. 38.00-45.00. IN MEN'S.



SALE 17.99 Choose from knit and woven sport shirts from Preswick & Moore and twill shorts from Savane and Preswick & Moore. Reg. 28.00-34.00 each. IN MEN'S.



40% OFF LADIES' SHOES AND SANDALS from relatively, Van Ell, Candie's, White Mountain, Nine West, Steve Madden, Franco Sarto and more. Reg. 35.00-79.00, sale 21.00-47.40. IN WOMEN'S SHOES.



SALE 19.99 Great selection of novelty sweaters and denim shorts for juniors. Reg. 24.00-38.00. IN JUNIORS. NOT AVAILABLE AT PHIPPS PLAZA.



40% OFF Large selection of spring and summer handbags. Reg. 32.00-80.00, sale 19.20-48.00. IN HANDBAGS. SELECTION VARIES BY STORE.

TAKE AN EXTRA
20% OFF
any single sale or clearance item
valid Sunday, May 26
all day

*or take 10% off any single sale or clearance item in shoes, men's suits and sport coats, and small electronics.
*Excludes cosmetics, fragrances, great buys, watches and special events like jewelry, maternity, intimate apparel, Preswick & Moore dress shirts, Levi's, ladies' dresses and suits, special orders, everyday low price items, day size and sales services. Not for services, electronics, gift cards and gift certificates. Cannot be used with any other coupon, special or discount offer. Must present coupon for savings. Not valid on previously purchased items.

PARISIAN

TAKE AN EXTRA
20% OFF
any single sale or clearance item
valid Monday, May 27
noon to closing only

*or take 10% off any single sale or clearance item in shoes, men's suits and sport coats, and small electronics.
*Excludes cosmetics, fragrances, great buys, watches and special events like jewelry, maternity, intimate apparel, Preswick & Moore dress shirts, Levi's, ladies' dresses and suits, special orders, everyday low price items, day size and sales services. Not for services, electronics, gift cards and gift certificates. Cannot be used with any other coupon, special or discount offer. Must present coupon for savings. Not valid on previously purchased items.

PARISIAN

E-MAIL NEWSLETTER Visit parisian.com to sign up for our e-mail newsletter for special offers and advance notice of sales.

P·A·R·I·S·I·A·N

YOU'RE SOMEBODY SPECIAL

CALL 1-800-424-8185 TO ORDER ANYTIME. STORE HOURS: Laurel Park Place (953-7500) open Sun. 12-6, Mon. 8-6, Tues.-Sat. 10-9.

FOR INFORMATION call 953-7500. CHARGE IT! Parisian Credit Card, MasterCard, Visa, the American Express® Card or Discover®.

LOCATED AT LAUREL PARK PLACE IN LIVONIA, CORNER OF NEWBURN ROAD AND SIX MILE ROAD, (TAKE THE SIX MILE ROAD EXIT OFF INTERSTATE 275.)

Observer Classifieds
work for you
(800) 579-SELL