

Garden from page C1

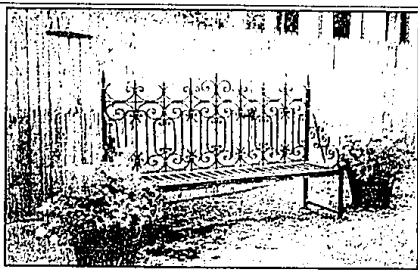
more.

White pines, tamarisk trees, a tall viburnum lantana 'Muhlenbergii' and other evergreens make a tall privacy fence along the lot lines so a sense of serenity permeates the gardens.

Patio view

At the back of the house one can look over the complete landscape. A brand new patio, made of tan pavers, is placed between two flower beds. One contains the pink dogwood, mentioned earlier, peonies, pine trees, and rhododendrons, while the opposite bed contains a very tall, mature locust tree with both a climbing hydrangea and clematis clinging to it. This bed is devoted to hostas. A small Japanese maple adds a deep color. This bed is edged with Michigan sandstone.

Nearby, a very long, low garage/storage building houses all the equipment needed to keep everything in tip-top condition. Along the front of this building another bed contains still more flowers, iris, day lilies, and regular lilies (a new interest). On the far side of this building is the "sick bay," where



From another time: This bench made of antique iron from France is an example of the home and garden designs created by Wendy Lewis of Beverly Hills, a sampling of which will be shown at a boutique by the town gazebo at the Franklin Garden Walk June 12. Lewis will also display her work at the Northville Art Show, Art in the Sun, on Father's Day Weekend, June 15 and 16. She can be contacted at (248)647-6734.

plants that aren't doing well are put until they are ready to rejoin the other plants. This area gets some sun and protection from the wind. Speaking of this, several of the plants have been rescued from stores at the last minute and now thrive in this lovely garden.

Several yards beyond the edge of the round patio, which they designed by using boxes to define its shape, is John's garden. It runs from the back of the lot and undulates directly up the middle of the yard. It is edged with the same sandstone as mentioned before. Their son, Steve, laid the stones for both beds. Their other son, Mark, lives out of state. "Both," says Yvonne, "are big time gardeners."

This large bed, approximately 14-by-40 feet, is a focal point and is filled with many of the same plants already mentioned. A Stewartia is an attractive accent with its white blooms. A witch hazel is a delight when its yellow blooms appear in late winter. Rhus Sunshin, an excellent filler plant, is also here. This bed is a large group of deciduous and evergreen shrubs and trees, most often grown for their spring and fall foliage.

The couple designed their gardens together and they both enjoy working in them. John says, "It's practically been an obsession." He edges all the beds, takes care of his special

ones and mows and cares for the lawn. He also makes his own compost. Yvonne has free reign over the rest.

When the ground is frozen, the beds are mulched with pine needles and/or oak leaves. Burlap is wrapped around the more tender plants in the winter. Wood fines (extra-finely chopped wood) is used as much as a mulch to suppress weeds and add beauty.

Because of the intense planting, the shade, and the hostas, Yvonne applies the product, Deadline, several times a year to eliminate slugs. She warns, "It's very caustic and should be used with care."

The plants are labeled to help with identification. Look for your favorites. A bonus awaits when you arrive at the back area. Yvonne plants many, many colorful hanging baskets near the door. Don't miss the display!

KITCHEN REFACING FREE ESTIMATES

- Now Available Affordable Granite Countertops
- The Leader in Cabinet Refacing
- Factory Direct
- Much Less than replacing
- Solid Oak, Maple, Cherry
- References in your neighborhood

cabinet clinic

West: (734) 421-8151
North/East: (810) 751-1848
www.cabinetclinic.com

GARDEN WALK CALENDAR

ROCHESTER WNFGA

Tickets are on sale for a summer garden walk sponsored by the Rochester Hills Museum and Rochester Branch of the Woman's National Farm and Garden Association. The walk will be held 10 a.m. to 4 p.m. Thursday, June 20. Featured gardens will be located in private yards in downtown Rochester, Rochester Hills and Oakland Township. Master gardeners will be available to answer questions. Refreshments will be available at each of the six featured sites. A plant sale featuring selected species from each garden is planned for the museum grounds. A map to each garden will be provided with tickets. Tickets are \$10 in advance, \$12

the day of the event and are available at the Rochester Hills Museum 1-4 p.m. Wednesdays through Saturdays. The Victorian Rose tea room of Rochester will cater lunch at the downtown American Legion Hall 11 a.m. to 2 p.m. the day of the event. Lunch is \$12 and must be paid for in advance. The museum accepts major credit cards. The museum is located at 1005 Van Housen Road, off Tienken Road, one mile east of Rochester Road. To order by phone, or for more information, call the museum at (248) 656-4663.

TROY GARDEN CLUB

The Troy Garden Club presents its 28th Annual Garden Walk on Wednesday, July 10, featuring six gardens. Refreshments

will be served at several of the gardens. A craft boutique and raffle will also be featured at one of the gardens. Hours are from 9:30 a.m. to 2 p.m. on the evening hours 6-8:30 p.m. Proceeds will benefit various community garden-related organizations.

Walk tickets are \$10, proceeds only, and are limited in number with no tickets available the day of the walk. They may be bought at the three Troy locations after June 1: 1. Troy Historical Museum, 60 W. Waukegan Road, Willow Lake, 48069. 2. Waukegan Road, Willow Lake, 48069. 3. Troy Garden Club, (248) 579-8000. To include your garden in this listing, write to: Troy Garden Calendar, The Observer & Eccentric, 805 East Maple, Birmingham, 48009.

IF YOU GO

What: The Franklin branch of the Women's National Farm and Garden Association, Inc. presents a garden walk featuring five gardens

When: 10 a.m. to 3 p.m. and 6-9 p.m. Wednesday, June 12

Tickets: \$8 pre-sale and \$10 the day of the walk. A buffet salad lunch at the Franklin Community Church will be served at two seatings, 12:30 and 1:30. Lunch tickets are \$8 (limited seating)

Buy tickets at The Apple Tree Room Boutique in Franklin, or order by mail. Send a check payable to "W.N.F. & G.A. Franklin Branch" P.O. Box 250194, Franklin, Mich. 48025-0194. Specify lunch seating. On the 12th, tickets will be sold at the Franklin village gazebo (next to the Franklin Community Church) where a boutique will entice shoppers. Questions: (248) 851-2668.

Supports: Proceeds support horticultural scholarships and local, state and national environmental and horticultural causes.

Blue Dot.
Heating • Cooling • Plumbing and more

BERGSTROM'S Cherry Hill KAST

✓ Best Prices
✓ Fastest Service
✓ 100% Satisfaction

For Same Day Service and Installation Guaranteed.

Comfort Today Or You Don't Pay!

<p>Service Special</p> <p>FREE!</p> <p>Air Conditioning SERVICE CALL (\$59 Value)</p>	<p>Trade-In Reward</p> <p>\$500 off!</p> <p>Trade in your old equipment for cash off a new Amana® system</p> <p>\$250 Off Air Conditioner Trade-In \$250 Off Furnace Trade-In</p>	<p>Duct Cleaning Special</p> <p>\$75 Off!</p> <p>Whole House DUCT CLEANING</p> <p>"For Your Family's Health"</p>
---	---	--

AS SEEN AT OTHER FURNITURE STORES AND EXPRESSES!

Introducing...

ComfortFlex
The Mattress That Conforms To You™

OUR INTRODUCTORY LOW PRICE **\$998** queen set

reg. price \$2295 competition price \$1099

★ No Interest ★ No Payments

★ No Money Down ★ For 12 Months

*with approved credit

Never Turn

Sale \$349
reg. \$849

*Solid Wood Futon in oak finish with 6 in. mattress, take with

Sale \$149
reg. \$499

*Black Metal Futon with 6 in. mattress, take with

Sale \$99
reg. \$249

*Peacock Daybed in white and porcelain accents (take with)

Sale \$249
reg. \$699

*Thin Full C-shape Futon Bunkbed available in black or white with 6" mattress, take with

LARGE SELECTION OF BRASS & IRON BEDS

Confused? Questions? Bedding Hotline 1-800-668-6287

FREE HOME TRIAL • FREE SETUP • FREE PICKUP • 30 DAY HOME TRIAL
Call store for details

Grand Rapids THE MATTRESS SUPERSTORE

TROY NEW ROCHESTER WATERFORD ROYAL OAK

WAREHOUSE CLEARANCE CENTER 48065 Clearwater Way 32222 Woodward

1-800-668-MATS 1-800-579-MATS 1-800-929-MATS 1-800-339-MATS

Spring Sale

The Month of June
10% off
All Granite in stock
All items excluded

Marble - Granite - Silestone®
Why buy countertops at retail when you can buy direct? Since we fabricate at our own locations, we beat the "Big E" store pricing. We offer quick delivery and personalized service.

Granite 3cm thick!

\$45.95	S/F	Rosa Beta
\$45.95	S/F	Luna Pearl
\$45.95	S/F	Desert Gold
\$49.95	S/F	Impala Black
\$49.95	S/F	Verde Butterfly
\$52.95	S/F	Absolute Black

All prices include installation & measurement, straight polished edge 20 s/f minimum

CERAMIC TILE INVENTORY BLOW-OUT SALE!

Tumbled Marble
4x4 All Colors
\$8.75 S/F - \$8.95 S/F
Black Jack Slate
12x12 \$1.99 S/F

Silestone® 3cm thick!
FINAL CLOSE-OUT
\$34.95 s/f installed!
includes straight polished edge 20 s/f minimum

We stock over fifteen hundred slabs of Marble, Granite and Silestone in over eighty unique colors. We stock the largest selection of imported ceramic tile in Michigan.

Check our prices first!

Ceramic Tile Sales Inc. Marble & Granite Shop

Southfield Farmington Hills Rochester
23455 Telegraph Rd. 24301 Indoplex Circle 1972 Star Blvd Dr.
248-356-6430 (248) 426-0093 248-853-4654

Visit one of our Showrooms!

Installation includes Wayne, Oakland, and Macomb Counties. Others at additional cost. Offer not valid with any other discount. All previous orders excluded. Subject to stock on hand.

Showroom Hours: M-T-Th 8:30-5:00; W-F 8:30-8:00; Sat 9:00-5:00