

## ENGAGEMENTS

## STRIBBELL-COFFER

Jerry and Jan Stribbell of Farmington Hills announce the engagement of their daughter, Cari, to Ian Coffey, son of Joe and Barbara Coffey of Troy. The bride-to-be is a graduate of Michigan State University and Walsh College, where she is currently finishing studies for a second master's degree. She is employed in advanced marketing at Venture Industries in Sterling Heights. Her fiancé is a graduate of Michigan State University and Walsh College, where he is currently finishing studies for a second master's degree. He is employed as a program manager at Venture Industries in Sterling Heights. A spring wedding is planned.



## SEBOK-STROCK

Mr. and Mrs. Joseph Sebok of Southgate announce the engagement of their daughter, Dr. Kimberly Sebok, of Farmington Hills, to Jeffrey Strock, son of Mr. and Mrs. Jan Strock of Sun City West, Ariz.

The bride-to-be is a graduate of the University of Michigan and Foris State University College of Optometry.

Her fiancé attended Schoolcraft College and is employed by the City of Royal Oak as a Firefighter/Paramedic. He also serves as an adjunct faculty member at Baker College.

A September wedding is planned at Pine Knob Mansion in Clarkston.



## ANNIVERSARY

## BOHNWAGNER

Donald and Barb Bohnwagner of Farmington Hills celebrate 50 years of marriage June 20, 2002. They were married June 20, 1952, in Calvary, E.U.B. Church, Detroit.

Donald and Barb resided in Livonia 31 years prior to moving to Farmington five years ago.

Don is retired seven years, and works at Big Lots three mornings a week.

He is a member of SPEBSQSA, a barbershop chorus. Barb is retired. She enjoys ceramics and part time sales work for Avon.

Both Don and Barb are members of Wayne-Westland Senior Chorus.

They have four children, Jeffrey Bohnwagner, Terri Ross, Donna Martin and Stephen Bohnwagner, eight grandchildren and four great-grandchildren.



June 15 they will renew their vows in Church of The Savior, R.C.A. with a reception following.

## MILESTONE

Camilla Terhune was the guest of honor at a party celebrating her 100th birthday on Saturday, April 13. Approximately 100 friends and family members from as far as Hawaii and Texas gathered for appetizers and dinner to help her celebrate.

Terhune was born April 16, 1902 in Pennsville, N.J. In 1919 she moved to Detroit as a result of being transferred with the Dupont Company where she worked as a payroll clerk. She was first married in 1923, and she had a son Phillip Frakes. She divorced years later, but remarried in 1936. Her new husband, Jack Terhune, gave her two stepsons Bob and Jack Terhune.

She worked for 24 years for Cooper Insurance Agency in Detroit as an insurance clerk, retiring in 1968. After her husband's death she moved to Farmington where she has remained for the past 25 years. Terhune loves baseball and



enjoys the visits of her many friends and family members. She is still able to live independently and is a member of the Farmington First United Methodist Church. She has five grandchildren and seven great-grandchildren.

## GOOD MORNING!

JUNE 6, 2002

## Michigan shoppers claim historic home furnishings discounts

Watch Hill Home Interiors breaking records during historic store closing sellout

By JOAN BATSON  
MCM Staff  
BIRMINGHAM, MI

Even long time observers of furniture fashion trends have expressed surprise at the remarkable events of the last few weeks in Birmingham, Michigan. When Kurt and Mia Vopari, founders and owners of Watch Hill Home Interiors, announced a \$1,000,000 store-closing sellout of imported home furnishings and accessories, it was good news for shoppers in the Southeastern Michigan area.

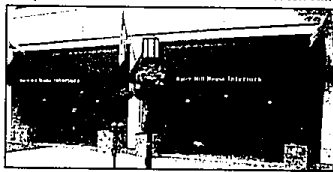
Kurt and Mia Vopari decided to close their popular Watch Hill East Maple Street location in order to focus and expand their Warehouse/Showroom on South Eton in Birmingham. "We have thought about this decision for quite some time," said Kurt Vopari recently. "As you may imagine, it was most difficult. However, Mia and I came to the conclusion that we could serve our customers much better in the larger Warehouse/Showroom location." Kurt expressed their concern about being able to sell off sufficient inventory to make the transition possible.

Mia expressed a similar concern: "We realized

that to sell so much merchandise in a short time, it would be necessary to cut prices to the bone. We hoped customers would respond to these obvious bargains on unique imported merchandise. But the response has exceeded our most optimistic expectations."

Mia founded the store, originally selling exclusive European antiques. "Some customers found the sizes of tables and cabinets of original antiques too restrictive," said Mia. "People often needed different table sizes or preferred a different finish." She said that customers really loved the European design and workmanship. The next logical step was to import solid wood tables, chairs and dining pieces directly from Europe. "In this way people can get exactly the size and finish they prefer, and still enjoy unique European flair and craftsmanship." The Voparis have supplemented their imported northern-grown solid pine and cherry offerings with select teakwood pieces of unique quality imported from the East. "We hand-select everything we offer to the public," said Kurt. "Our customers are particular ... we offer only the finest in quality and craftsmanship."

### Unique Product Lines Have Paid Off for Watch Hill



WATCH HILL HOME INTERIORS began offering unique imported merchandise 16 years ago. Originally specializing in European Antiques, the store has developed into Southeastern Michigan's largest importer of European design dining chairs and tables. The store has added to this a broad selection of imported accessories, occasional tables, lamps, and many other categories, plus unique items available nowhere else in the five state area. This has been a recipe for success, attracting shoppers from all over Michigan. The 330 East Maple Street building is closing so that Watch Hill can focus on expanding services and display at the Warehouse/Showroom location at 645 South Eton.

### Bargain hunters finding much to see and buy at Watch Hill Store-Closing

Michigan's Most Unique Home Furnishings Store Still Jammed with Merchandise Unavailable Anywhere Else

By Donald Green

MCM Staff

BIRMINGHAM, MI - "I like the idea of owning something that no one else has in Northern Michigan," one customer told me at the Watch Hill Store Closing Sellout. That was the attitude of many customers as they browsed through the numerous displays and accessory offerings at Watch Hill Home Interiors.

Very popular were the old-world style original oil paintings that look like they were taken off of a castle wall somewhere in Europe. Another very popular item was the framed plate glass beveled mirrors. "I've seen lesser versions in other stores for twice this sellout price," one lady told me. Folks loved the comfort of the legendary Watch Hill collection of European dining chairs. In addition to a wide selection of tables, hutches, chinas and servers, shoppers found occasional tables, lamps, desks, bookcases, TV cabinets, chest of drawers, kitchen islands, office furniture, table top accessories, garden furniture, wall art and much more. Shoppers who buy a lot of stuff are cautioned that time is running out. The million-dollar liquidation is taking place in both Watch Hill locations in Birmingham: 330 East Maple, (which is closing), and the Warehouse/Showroom at 645 South Eton.



Watch Hill associates tag historic reductions on every item in every department in preparation for the largest store closing sellout of its kind in Birmingham history.

(ABOVE, LEFT) Shoppers came from all over Michigan to claim the bargains. They were anxious to get in on the near-wholesale prices on hundreds and hundreds of items. Many unique accessory items are being offered for as little as 29 cents on the dollar.

(ABOVE, RIGHT) Some shoppers browsed for hours through the million dollar selection. Every item was tagged at reductions of 20% to 71% off regular list price.



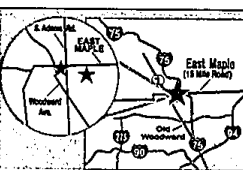
Kurt and Mia Vopari reveal all over Europe to the finest and most unique home furnishings and accessories.

### Man & wife team pleased as sellout breaks sales records

BIRMINGHAM

Both Mia and Kurt Vopari admit to being a bit nervous when they decided to launch the largest sellout of imported merchandise in Birmingham history. "We believe people could travel a thousand miles and not get all we have to offer," said Kurt. "But, it was still a risk trying to sell a million dollars in merchandise in such a short time."

Competition seems taken by surprise, and unable to equal the Watch Hill bargains. "People know the real thing when they see it," said Kurt. "This is a wall-to-wall sellout and we are offering certified reductions off our regular prices. No ordinary sale can compete with our prices. This is truly a once-in-a-lifetime opportunity."



### TODAY IN MICHIGAN

Watch Hill Home Interiors store closing sellout continues to be a big attraction for bargain hunters. Vigorous measures are being taken to clear the store. "As soon as it is humanly possible," Officials at the store caution that "This once in a lifetime event can't last forever. When it's gone, it's gone," said one. Shoppers are advised to act soon.

### Michigan's favorite source for European Home Furnishings will be more active than ever

BIRMINGHAM, MI

Kurt Vopari gave assurances today that Watch Hill Home Interiors will remain open to serve customers "better than ever." He declared that the fifteen year tradition of quality and service will continue in the Watch Hill Warehouse/Showroom location at 645 South Eton in Birmingham. "By focusing on this single location we can give our patrons an even more fulfilling shopping experience," he stated. This information came as a great relief to decorators and discriminating shoppers. "There is nothing like Watch Hill," said one professional. "No one even comes close."

## TIME IS RUNNING OUT!

Watch Hill Home Interiors  
\$1,000,000 STORE CLOSING

# SELLOUT!

## MUST END SOON

WEEKDAYS & SATURDAY 10 - 6  
SUNDAY 12 - 4

NOTICE: WATCH HILL WILL BE CLOSED  
THURSDAY, JUNE 13!



330 EAST MAPLE  
In Downtown Birmingham



645 SOUTH ETON  
(Warehouse/Showroom)  
in Birmingham



PP1111001

**We Make Home Loans Easy!**

Save Thousands a Year and Hundreds a Month with New Low Rate Payment Plans from Vision Mortgage North.

Do Your Current Monthly Bills Look Like This?

Loan Amount	1.5% Payment Rate	Typical 10 Year Fixed Rate
\$100,000	\$450.00	\$674.00
\$150,000	\$674.00	\$1011.00
\$200,000	\$898.00	\$1347.00
\$250,000	\$1122.00	\$1684.00
\$300,000	\$1348.00	\$2021.00
\$350,000	Please Call	APR 6.9%

WAY TO HIGH

**Rates As Low As 3.5% CALL NOW**

**Good Credit - Bad Credit**  
Pay Off Credit Cards  
Pay Off Land Contracts  
Pay Delinquent Taxes  
Own Your 1st Home with Little or No Money Down  
Free & Quick Consultation  
No Income Verification  
Investments Properties

**FREE DVD PLAYER**  
When you close a loan with Vision Mortgage North

Get Pre-Approved for Your New Home!

**Vision Mortgage**  
6600 W. Maple Road, Suite B209  
W. Bloomfield, MI 48122  
**1-800-847-8350**  
www.visionlending.com

\*DVD upon disbursement. Must disburse by Dec. 11, 2002.