



CENTURY 21 TOWN & COUNTRY
294 E. BROWN
BIRMINGHAM, MI 48009

SANDY NORMAN THE \$20,000,000 MAN

**HIRE A
GREAT AGENT
AND THE
#1 CENTURY 21
FIRM IN
AMERICA**



DISTRESSED SALE!



LARGEST FRANKEL HOME IN WOODCLIFFS. 6500 Sq. Ft. Tudor Style Residence. 1st flr MBR + 4 BRS up with guest suite, activity rm and spacious mirrored workout rm on finished LL. Decks overlook woods. Main FLR has FR w/FP, LR, LIB custom w/dual office computer design, DR and a huge KIT area. 3 car garage. **REDUCED \$160,000.** To \$533,900. Ask for Sandy Norman. 248-901-0203



NEW LISTING

WEST BLOOMFIELD - MAPLEWOODS. Fabulous brick contemporary with 3100 sq. ft., 4 bedrooms, (master bedroom has office/workout rm, bath suite), 2.5 baths, great room w/fireplace, library, dining room, white formica kitchen, first floor laundry, partially finished basement, 2 car side entry garage, dual gas forced air/CA. \$419,900. Ask for Sandy Norman 248-901-0203.



OPEN SUNDAY 1-4

THREE BEDROOM, TWO BATH, 2,000 square foot Ranch in Bloomfield Hills with Birmingham schools. Replacement roof, gas forced air, kitchen, garage door, windows. Family room with fireplace, hardwood floor and doorwall to large patio. Great Condo alternative. Great lot. \$349,900. Ask for Sandy Norman 248-901-0203



2.5 ACRES IN ORCHARD LAKE. Fabulous contemporary on quiet cul-de-sac well maintained by original owner! Over 3,200 sq. ft. features 5 BRS, 3.5 baths, vaulted great room w/fireplace & doorwalls to deck, kitchen w/granite island & BFT, LIB, finished WOLL w/GR, FP & full bath, 3 car garage. \$619,900. Ask for Sandy Norman 248-901-0203



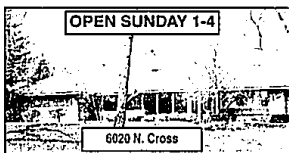
OPEN SUNDAY 1-4

FABULOUS DETACHED CONDO. Bloomfield condo w/1st floor MBR suite w/2 WIC's and whirlpool and double door entry. 3745 sq. ft., library w/granite paneling and FP, LR w/light ceiling and FP, Large KIT, formal DR w/access to deck. Fin LL. Huge amount of storage. **REDUCED \$140,000.** To \$599,900! Ask for Sandy Norman 248-901-0203



OPEN SUNDAY 1-4

CHELSEA PARK - WEST BLOOMFIELD. On cul-de-sac, over 3000 sq. ft. w/1st floor MBR suite and 2 BDRMS up, overlooking pond. Light, bright KIT w/white cabinetry, LR w/marble trimmed FP, LIB w/9 ceiling, huge FR w/3rd full BA on LL w/direct windows, 3 car garage. **REDUCED TO \$424,900.** Ask for Sandy Norman 248-901-0203.



OPEN SUNDAY 1-4

BLOOMFIELD'S "FOXCROFT." One of the newest homes in Foxcroft. Custom built w/1st floor MBR suite includes a 15' x 14' WIC w/7 double closets, island, whirlpool, separate shower and adjacent computer/office. Enclosed atrium opens to foyer, formal DR, GR w/FP and built-ins. Large KIT opens to enclosed Florida room. Super floor plan. Reduced to \$599,900. Ask for Sandy Norman 248-901-0203.



NEW LISTING

CITY OF BLOOMFIELD HILLS - Newer Executive Residence. 2 story foyer, formal DR, wood paneled LIB, LR w/marble FP & 2 story ceiling overlooked by bridge. White designer KIT, FF MBR suite w/WIC & super bath suite. 3 other BRS each have WIC's & private bath suites. Fin WOLL w/FR, billiard & bar area, sauna, library, exercise room, 3 car att garage. \$999,000. Ask for Sandy Norman 248-901-0203.



**Thank you for
making May a
\$10,000,000 Dollar
Month. It's not a
tough market if you
give buyers and
sellers 110% effort
and deliver the
following:**

- Advertising in Eccentric Newspapers
- All Four Homes Magazines
- The Detroit News
- The Jewish News
- Direct Mail of house brochures with up to 20 Pictures in each
- Guaranteed open houses monthly
- Internet on two different sites
- Virtual Reality Tour
- Regular agent contact
- Target Marketing
- Strong buyer agency representation

**Call me if you want your house
sold and not just listed!
248-901-0203**



OPEN SUNDAY 1-4

3963 Lakeland

PANORAMIC VIEWS OF CASS LAKE. Sharply REDUCED to \$699,000 - Below SEV!! By motivated seller! Spectacular contemporary w/panoramic views of Cass Lake. Meticulous 4800 SF home has family room w/fireplace, doorwalls to elevated deck, white formica kitchen, library and super master bedroom suite w/dynalite bath suite. Built in 1990, this home also has a finished walk-out and walkway to dock. Best Cass Lake lakeland value available! Ask for Sandy Norman 248-901-0203.



OPEN SUNDAY 1-4

2376 Hunt Club

CITY OF BLOOMFIELD HILLS ON FANTASTIC LOT! Quad has 5 BDRMS, 2.5 BAS, newer KIT w/granite island, LR & DR w/direct flrs, glass enclosed Florida Rm, large FR w/FP, library, MBR w/updated bath & WIC and fin LL, deck and huge, landscaped yard. 2 car side entry garage. \$479,900. Ask for Sandy Norman 248-901-0203.



OPEN SUNDAY 1-4

726 Great Oaks

BLOOMFIELD HILLS SCHOOLS. Beautiful setting for this 5 BDRM, 3.5 BA, 3200 sq. ft. home w/large backyard and circular driveway. Terrific newer kitchen, family room with cathedral ceiling and fireplace, library w/built-ins & a finished basement. All in the Bloomfield Hills School district. \$599,900. Ask for Sandy Norman 248-901-0203.

New Listings!

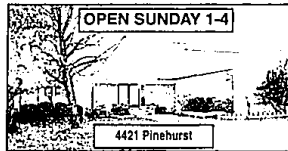
RENOVATED OLDER HOME, 1,500 square foot Ranch with basement on 2 1/2 acres. Beach and boating privileges, with West Bloomfield Schools. Value in land. Neighborhood of 1-3 million-dollar homes. \$379,900. Ask for Sandy Norman 248-901-0203.

SPECTACULAR DETACHED RANCH with gorgeous first floor master bedroom suite, white Formica kitchen with top-of-the-line appliances. Fabulous wooded setting. Dynamite finished walk-out with family room, wet bar, billiard area, 2 additional large bedrooms, a full bath, separate lavatory and tons of storage space. Won't last long. \$679,900. Ask for Sandy Norman 248-901-0203



NEW LISTING

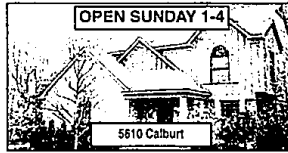
WABEK ON THE LAKE. Gorgeous walkout condo has over 3300 sq. ft. Fabulous 1st floor MBR suite w/laundry bath and WIC's & access to elevated deck. LIB w/built-ins. Huge 2 story LR w/doorwalls to deck. White formica kitchen. Lots of hardwoods & marble. The LL has 3 BRS, 2 BAS & 2 FRs, 2 car attached garage. Overlooks pond. \$585,900. Ask for Sandy Norman 248-901-0203.



OPEN SUNDAY 1-4

4421 Pinehurst

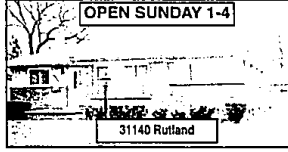
FABULOUS CONTEMPORARY IN MAPLEWOODS. Contemporary, one of the largest homes in West Bloomfield's Maplewoods. 2 story, 6 BRS, 4.5 BA home w/LIB, FR, LR and DR. Full bath adjacent to LIB, 2 story sunroom w/3 doorwalls overlooked by 2 balconies, MBR suite & finished basement. **REDUCED \$65,000.** To \$549,900! Ask for Sandy Norman 248-901-0203.



OPEN SUNDAY 1-4

5610 Calvert

NEWER WEST BLOOMFIELD CONTEMPORARY. 1995 2-story features 3 BDRMS, 2.5 BAS, LR/DR combo, 2 story FR w/FP & skylights, white formica KIT & breakfast room opens to cedar deck, patio. MBR has cath ceilings & WIC, bath suite & 2 car side entry garage. **REDUCED TO \$319,900.** Ask for Sandy Norman 248-901-0203.



OPEN SUNDAY 1-4

31140 Rutland

BEVERLY HILLS RANCH. 3+ BR brick ranch w/quality updating throughout! Newer KIT, baths, roof, windows, entry door, HDWD FLRS, GFACA replaced. The LL has a fin FR, BR & adjacent full bath. Filtered water through osmosis system. 2 car detached garage. **Reduced to \$234,500.** Ask for Sandy Norman 248-901-0203.



OPEN SUNDAY 1-4

5822 Shaun

WEST BLOOMFIELD RANCH. Built by builder in 1966 for himself, this home was way ahead of its time! Vaulted ceilings throughout & open floor plan w/3 BDRMS, 2.2 BAS, GR w/FP, FR w/FP, LIB, DR, large KIT, fin walk-out LL, 2 car attached garage, elevated deck, on 1/2 acre. \$329,900. Ask for Sandy Norman 248-901-0203.

**ASK FOR
SANDY NORMAN**

248-901-0203 (direct)
248-770-1353 (cell)

Website: realtor.com/Detroit/SandyNorman
Email: SANDYNORMAN21@aol.com
CENTURY 21 INTERNATIONAL AWARD WINNING OFFICES

Century 21
Town & Country
248-901-0203