

TURNOUT

FROM PAGE A1

Vagnozzi said she was looking forward to sharing concerns within the 37th District with Jennifer Granholm, who won the Democratic gubernatorial nomination. He said he and Granholm have a good relationship, and he planned to speak to her about sound walls along I-275, nursing home care and the state's mental health system.

Knol knew early on she had a good lead in Farmington, where she outpolled her opponents with more than 58 percent of the vote, so she spent election day greeting voters at the Finnish Center in Farmington Hills.

"I thought it was important that I get out," she said. "The Finnish Center is Precincts 22 and 23, and both are big districts."

Knol didn't find out she'd won until well after midnight; a few glitches at Farmington Hills city hall delayed the vote count. Asked early in the evening whether she'd stay at Page's restaurant, where she held her victory party, for the duration, Knol nodded.

"I'm going to actually sleep in tomorrow," she said.

She felt her door-to-door and making personal contact made the difference in her campaign.

LARGE TURNOUT

Election workers pointed to a variety of factors for the turnout, which was close to pre-election predictions of 82 to 84 percent. A total of 17,704 out of 56,461 registered voters - including absentee voters - cast their ballots.

"It's very good for a primary," Marilyn Oldani, election chairwoman for Precinct 9 at Duncle Middle School, 32800 12 Mile, said Tuesday.

Oldani attributed the turnout to active campaigning.

"There are so many candidates who have been out there and introducing themselves," she said.

Norma Henderson, election chairwoman for Precinct 15 at First Presbyterian Church, 26155 Farmington, said ballot numbers were right in line with most elections.

"We usually have more voters than most precincts," Henderson said. "Everything seems to be going fine."

Genevieve Terry, election chairwoman at Precinct 14, Alameda School, 32400 Alameda, said she believed that money issues drew the voters.

"I think (the turnout) is because of the ballot proposals," Terry said.

As of Tuesday afternoon, nearly 300 out of 1,887 registered voters, not including absentee voters, had cast their ballots. This amounted to about 15 percent for that precinct.

The Power Road construction project did not seem to keep voters away, Terry added. Alameda was one of three precincts affected by road construction.

"(Voters) griped about it," she said.

Precincts 22 and 23, at the Finnish Cultural Center, 35200 Eight Mile, had similarly high turnouts. Election chairman Harry Schwartz said good weather and ballot proposals seemed to be the primary reasons.

District Judge candidate and Hills city Councilman Barry Brickner was fairly accurate in his turnout predictions. He was doing 11th hour campaigning at First Presbyterian Church on Tuesday afternoon.

"I say the turnout will be between 15,000 and 17,000," Brickner said.

Campaigners handing out leaflets and brochures seemed pleased with the weather, which was in the high 70s Tuesday afternoon.

"We were just saying 'Thank God it's not raining and thank God it's not 120 (degrees),' said Beata Goutos, who was campaigning for district judge candidate Annette Raczkowski.

Goutos and other campaigners, like Gwen Lett, representing incumbent district judge Jim Brady, said they believed their efforts were important.

"There is a small percentage (of voters) that need a little bit of a push," Lett said.

Hills voter Curt Nielsen said that he believes judges should be appointed, not elected.

"Most people don't know enough about them to vote for



Brady Raczkowski them," said Nielsen, who said he bypassed the judges section of the ballot and voted only for governor.

Another Hills voter, Don McKechnie, also said that picking the judges was his most difficult task as a voter.

Staff writer Joni Hyrd also contributed to this story.

hreedham@oe.home.com.net | (248) 477-5450

ELECTION RESULTS

CONTESTED PRIMARY ELECTION RESULTS (UNOFFICIAL)

Farmington Hills Registered voters: 66,461 Ballots cast: 17,704 Republican ballots cast: 6,465 Democratic ballots cast: 10,761 Non-partisan ballots cast: 478 Voter turnout total: 31.36 percent

REPUBLICAN Governor Dick Posthumus: 4,822 John Joe Schwarz: 1,455

U.S. Senator Andrew Raczkowski: 5,662 Congress 9th District Bart Baron: 552 Joe Knollenberg: 5,609 State Senator 14th District Marc Wilkins: 793

House District 37 Valerie Knoll: 2,892 Terry Sever: 1,970 John Akouri: 1,192

DEMOCRATIC

Governor James J. Blanchard: 2,694 David Bonior: 1,910 Jennifer Granholm: 6,055

U.S. Senator Carl Levin: 9,474

Congress 9th District David Fink: 7,969

State Senator 14th District Gilda Jacobs: 8,017

House District 37 Aldo Vagnozzi: 7,497

Charisse Heath: 1,932

County Commissioner 14th District Ryan J. Gesund: 3,124

County Commissioner 15th District Jim Nash: 4,525

47th District Court Judge Jim Brady: 4,353

Annette Raczkowski: 2,913 Larry Leib: 1,237

Barry Brickner: 2,381 Alan Vosko: 1,354 Paul Blizman: 1,680 Sidney Kraizman: 253

what's happening at parisian

SATURDAY, AUGUST 10 11:00 AM TO 2:00 PM



JOIN US FOR KIDFEST AT PARISIAN

It's a day devoted to kids - they are the stars and the models. Find out how your child can become a model in our fashion show.



BE A PARISIAN MODEL

Register to win a chance for your child to become a Parisian model for a day. One model for boys' sizes 4-20 and one model for girls' sizes 4-16 will be selected.

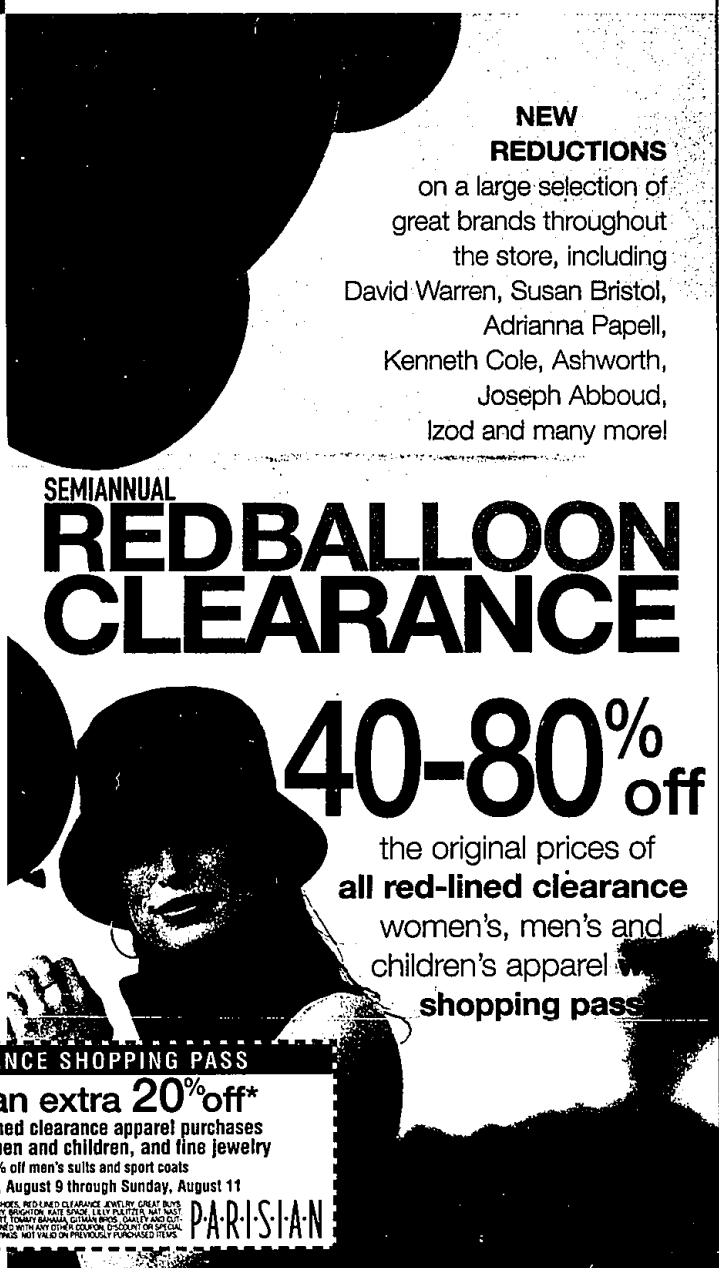
ENJOY FUN ACTIVITIES

Kidfest will be filled with exciting children's activities. Let your child design his or her own book cover. Girls can participate in a mini-makeover.

GOING ON NOW:

EUROCOMFORT SHOE CLEARANCE

Take advantage of great deals on the best of Eurocomfort footwear.



NEW REDUCTIONS on a large selection of great brands throughout the store, including David Warren, Susan Bristol, Adrianna Papell, Kenneth Cole, Ashworth, Joseph Abboud, Izod and many more!

SEMIANNUAL REDBALLOON CLEARANCE

40-80% off

the original prices of all red-lined clearance women's, men's and children's apparel with shopping pass

CLEARANCE SHOPPING PASS

Take an extra 20% off\* entire red-lined clearance apparel purchases for women, men and children, and fine jewelry

\*10% off men's suits and sport coats Valid Friday, August 9 through Sunday, August 11

PARISIAN

YOU'RE SOMEBODY SPECIAL

P·A·R·I·S·I·A·N

IT'S TIME FOR BACK-TO-SCHOOL Head to Parisian for the best names, the latest styles and back-to-school savings of 25-40%!

CALL 800-424-8185 TO ORDER ANYTIME. STORE HOURS: Laurel Park Place (953-7500) open Sun.12-6, Mon.-Sat. 10-9. FOR INFORMATION call 953-7500. CHARGE IT! Parisian Credit Card, MasterCard, Visa, the American Express® Card or Discover®. LOCATED AT LAUREL PARK PLACE IN LYNDIA, CORNER OF NEWBURGH ROAD AND SIX MILE ROAD (TAKE THE SIX MILE ROAD EXIT OFF INTERSTATE 275).