

Going Places

YOUR GUIDE TO SUBURBAN ENTERTAINMENT

PROFESSIONAL THEATER

Meadow Brook Theatre
A Christmas Carol, through Sunday, Dec. 22, Wilson Hall, Oakland University, Rochester Hills. Call (248) 377-3300 for times, dates and ticket prices. Children under 5 will not be allowed in the auditorium.

YOUTH PRODUCTIONS

Junior Actors of Ridgedale
Holiday Zoolite includes a musical play, snack, visit with

Dec. 6, at the college in Farmington Hills, 530, (248) 553-7200, Ext. 450.

Kirk In The Hills
Annual concert, Christmas Oratorio, Messiah, part 1 7:30 p.m. Sunday, Dec. 8 (Sanctuary) 1340 W. Long Lake Road, Bloomfield Hills, 515, \$10 seniors, \$8 students, (248) 626-2515, Ext. 109. A Festival of Music for Advent and Christmas, 6 p.m. Sunday, Dec. 15 (sanctuary) No charge. A Service of Nine

Mile at Middlebelt (use the G entrance), \$8 including lunch, \$5 show only, (248) 888-7685.

Rising Star Singers
In the Little Theatre at Plymouth-Canton High School, 7 p.m. Saturday, Dec. 14, Canton Center Road at Joy, freewill donation, (734) 354-9825

Plymouth Community Chorus
Holiday concert at 8 p.m. Friday, Saturday, Dec. 13-14, 4 p.m. Sunday, Dec. 15, Northville High School, 45700 Six Mile Road,

Saturday, Dec. 7, 2800 Drake, West Bloomfield, \$10 in advance, \$12.50 at the door, includes refreshments, (248) 788-0600.

WORLD MUSIC

Pat McDunn
Duke Humphries, 8-11 p.m. Friday, Rochester Hills, no cover, (248) 601-1100.

DANCE

Livonia Civic Ballet
The Nutcracker 7:30 p.m. Saturday, Dec. 14, 2 p.m. Sunday, Dec. 15, Clarenceville High School, 20155 Middlebelt, Livonia, \$14, \$11 seniors and students, \$9 children 5-9, no charge children under 4, (734) 427-9103.

Livonia Symphony Orchestra
Joins with Dearborn Ballet Theatre for The Nutcracker 7:30 p.m. Saturday, Dec. 7, Churchill High School, 8900 Newburgh, north of Joy, Livonia, \$16, \$10 students, (734) 425-4855.

Michigan Classic Ballet
The Nutcracker II a.m. and 3:30 p.m. Saturday, Dec. 14, 2 p.m. Sunday, Dec. 15, Mercy High School, 29300 W. 11 Mile Road, Farmington Hills, \$18, \$14 seniors and children, (248) 334-6964.

MoreDances Contemporary Dance Company

In concert, 8 p.m. Saturday, Dec. 7, at Azar's Gallery, 670 Old Woodward, Birmingham, \$15 adults, \$10 students & senior citizens, at the door, (248) 689-4054.

Oakland University
Oakland Dance Theatre and OU Repertory Dance Company, 8 p.m. Friday-Saturday, Dec. 6-7, Varner Recital Hall, Oakland University Campus, Rochester Hills, \$10, \$5 students.

Plymouth-Canton Ballet
Presents The Nutcracker with the Plymouth Symphony Orchestra II a.m. and 4:30 p.m. Saturday, Dec. 7, 2 p.m. Sunday, Dec. 8, Salem High School Auditorium, 46181 Joy at Canton Center Road, \$18, \$10 students



Bloomfield Township residents Stephanie Yashinsky (left), Ashley Gaum, Sally Savole and Andrea Kaptur, march for feminism in the play, The Heidi Chronicles. The Village Players stages the Wendy Wasserstein play at 8 p.m., Friday-Saturday, Dec. 6-7, 13-14 and at 2 p.m. Dec. 8 and 15, at the playhouse, 34660 Woodward, Birmingham. Tickets are \$15, (248) 644-2075.

grade 12 and younger, \$5 Sugar Plum Tea, (734) 451-2112.

SOCIAL DANCING

Dance Elite Ballroom Studio
Ballroom/Latin dance party 9 p.m. to midnight, DJ, open to the public, Friday-Saturday, Maple at Haggerty (inside Bloomfield Avenue Shoppe II), West Bloomfield, \$10, \$9 Michigan Swing Dance Association, sing-along welcome, (248) 926-8522.

Moon-Dusters
Ballroom dancing to live bands, featuring swing, fox trot, waltz, cha-cha and Latin, 8:30-11:30 p.m. Saturday, Livonia Civic Center, 15218 Farmington Road at Five Mile Road, \$5, (248) 967-1428.

Rhythm N' Shoes
Weekly ballroom/Latin dance

COMEDY

Joey's Comedy Club/Livonia
Every Tuesday night is open mic night. The club also offers a stand-up comedy class for those interested in performing and writing comedy, 36071 Plymouth Road, Livonia, (734) 261-0555

MUSEUMS AND TOURS

Plymouth Historical Museum
New permanent Abraham Lincoln exhibit. Images of Lincoln, acquired from Michigan collector Weldon Pelz, includes lock of Lincoln's hair cut from his wound the night of the assassination, a life mask and casts of Lincoln's hands sculpted in 1860 by Leonard Volk, life-size was figures of Abraham

and Mary Todd Lincoln in their second inaugural period clothing. 36-foot mural of the second inaugural ball from 1865, at the museum, 155 S. Main, \$3, \$1 students ages 5-17, \$7 a family. Hours are 1-4 p.m. Wednesday-Thursday and Saturday-Sunday, (734) 455-8940

Rochester Hills Museum at Van Hoesen Farm

The 16-acre museum complex tells the story of Oakland County's earliest pioneers. Admission includes tours of the 1840 Van Hoesen Farmhouse, 1850 Tenant Red House and 1927 Van Hoesen Dairy Barn. The museum's new permanent exhibit, A Lively Town, uses more than 200 images and 100 artifacts to show the development of the Rochester area. \$5, \$3 children, students and seniors. Hours are 1-4 p.m. Wednesday-Saturday, at the museum on Van Hoesen Road, one mile east of Rochester Road off Henken, (248) 645-4663 or visit the Web site at www.rochesterhills.org/museum.htm



Check out the "FolkRockoustic" sounds of Tangerine Trousers when it performs at 8 p.m. Saturday, Dec. 7 at Trinity House Theatre, 38840 West Six Mile, Livonia. The Trousers have developed a unique sound by combining the elements of folk, blues, country, jazz, pop, rock, gospel and even African music. Special guests, The Blue J's, also will perform their acoustic music. Tickets are \$10 general admission and \$7 for theatre members. Reserve tickets by calling the theater at (734) 464-6302.

Santa and a gift, 10 a.m. and 12:30 p.m. Saturday, Dec. 14 and 1 p.m. and 3 p.m. Sunday, Dec. 15, at the Ridgedale Players playhouse, 205 West Long Lake Road, between Crooks and Livernois, Troy, \$7.50, (248) 988-7049.

The Millennium Centre

Youtheatre presents Robinson Crusoe II a.m. and 2 p.m. Saturday, Dec. 7, 2 p.m. Sunday, Dec. 8, 15600 J.L. Hudson Drive, Southfield, \$8 in advance, \$10 at the door, (248) 557-7529. The show also features a Scholastic Book Fair and salute presentation for area Cub and Boy Scouts.

HOLIDAY PROGRAMS

A Classical Christmas

Rebekah Walker sings classical, sacred and popular holiday music 7:30 p.m. Thursday, Dec. 19, in the Basilica of St. Mary Antiochian Orthodox Church, 18200 Merriman, one half mile north of Six Mile Road, Livonia, \$8 advance, \$10 at door, (734) 422-0010, (248) 427-2122 or (248) 477-7720.

Avon Players, Rochester Hills Community Theater

Forever Christmas VI—Deck the Hall, Saturday-Sunday, Dec. 7-8 and 12-15, 1185 Washington Road, Rochester Hills, \$15, (248) 608-5077.

Birmingham Concert Band

Holiday concert 3 p.m. Sunday, Dec. 8, Lutheran Church of the Redeemer, 1800 West Maple, between Southfield and Cranbrook (Evergreen), Birmingham. No charge, but scholarship fund donations will be gratefully accepted, (248) 647-7586.

Deborah's Stage Door Center for the Performing Arts

10th Annual Christmas Spectacular, a performance for the whole family, 2 p.m. and 6 p.m. Saturday, Dec. 14, Warren Woods Middle School, \$12, (248) 852-8133.

Farmington Community Chorus

Yule Cheer, 8 p.m., Friday-Saturday, Dec. 20-21, Mercy High School Auditorium, corner of 11 Mile Road and Middlebelt, Farmington Hills, \$10, (810) 632-4067.

Holiday Doll Show

11 a.m. to 3 p.m. Sunday, Dec. 8, Plymouth VFW, 1426 S. Mill, \$5, no charge for children under 10, (734) 455-2110.

King's Feast

William Tyndale College hosts a musical performance and dinner presented in the style of the Renaissance with period costumes, trumpeters and old English fare 6 p.m. Saturday,

Lessons and Carols, 4 p.m. Sunday, Dec. 22 (sanctuary) no charge.

Livonia Civic Chorus

With St. Pete's jazz ensemble and this year's musical scholarship winner Mary Beth Rosencrantz, 7:30 p.m. Friday-Saturday, Dec. 13-14, 3 p.m. Sunday, Dec. 15, Livonia Civic Center Library Auditorium, 32777 Five Mile Road, east of Farmington Road, Livonia, \$10, \$8 seniors and students, \$5 children under 12, (734) 466-2410.

Livonia Youth Choir

Winter concert 3:30 p.m. Saturday, Dec. 7, Faith Lutheran Church, 30000 Five Mile Road, Livonia. No charge, reception after concert, (734) 425-1749.

Longacre House

Lunch with Santa, 11 a.m.-noon and 1-2 p.m. Saturday, Dec. 14 at the house, located on Farmington Road, south of 11 Mile, in Farmington Hills. Includes lunch, visit with Santa, a craft and storytelling. Tickets are \$12. Children must be accompanied by an adult, (248) 477-8404.

Lutheran Church of the Redeemer

A holiday concert, 3 p.m. Sunday, Dec. 8, 1800 W. Maple, Birmingham, (248) 363-3303.

Michigan Opera Theatre

Broadway music and holiday rhythms 7:30 p.m. Friday, Dec. 6, Orchard Ridge Campus, Smith Theatre, 27095 Orchard Lake Road, Farmington Hills, \$15 (senior/student discounts available), (248) 942-3241.

Michigan Star Clipper Dinner Train

Santa Train, noon and 2 p.m. Saturday, Dec. 14, \$10 adults, \$9 seniors & children. Reservations required, (248) 960-9440.

The Millennium Centre

Youtheatre presents The Christmas That Almost Wasn't and snack with Santa. Snack 1:30 p.m. performance 2:30 p.m. Sunday, Dec. 15, 15600 J.L. Hudson Drive, Southfield, \$8 in advance, \$10 at door, Holiday Musical Magic presented by The Boys Choir of Harlem 8 p.m. Dec. 14, (248) 557-7529.

Paper Bag Productions

A Charlie Brown Christmas, noon lunch, 1 p.m. show, Saturday-Sunday, Dec. 7-8, 14-15, and 21-22, Livonia Mall, Seven

Northville, \$12, (734) 254-9617.

Redford Civic Symphony

Seasonal music including White Christmas, The Christmas Suite, Rudolph the Red-Nosed Reindeer, selections from The Messiah and more, 3 p.m. Sunday, Dec. 8, B. St. Hilary, on Elmira off Plymouth Road, east of Telegraph, no charge.

Schoolcraft College Community Choir

Holiday concert 7 p.m. Saturday, Dec. 7, Cathedral Church of St. Paul, 4800 Woodward Ave., Detroit, 4 p.m. Sunday, Dec. 8, St. Matthew's United Methodist Church of Livonia, 30900 Six Mile Road. Donations will be accepted during intermission, (248) 349-0175.

Southfield Municipal Complex

Free holiday concert 3:30 p.m. Sunday, Dec. 8, room 115, Southfield Parks and Recreation building, 26000 Evergreen Road. Donations accepted, (248) 545-8743.

Troy Community Chorus

Holiday concert, 8 p.m. Friday, Dec. 6, Athens High School, west side of John R. north of Wattles, \$5-\$10, (248) 879-0138

Troy Historical Society & Troy Museum Guild

Hanging of the Greens: Stroll around, enjoy punch and cookies. Listen to carols, make holiday crafts and visit Santa, 1-5 p.m. Sunday, Dec. 8, at the Troy Museum, 60 W. Wattles, Troy, no charge, (248) 524-3570

JAZZ/BLUES

Larry Hozero Jazz Quintet

Performs 8 p.m. to midnight Monday, at Milch House's Food & Spirits, Livonia, (734) 425-5520 or visit www.larryhozero.com

Vince James Trio

Compart's, 8-11 p.m. Wednesday, 350 S. Main, Plymouth, (734) 416-0100.

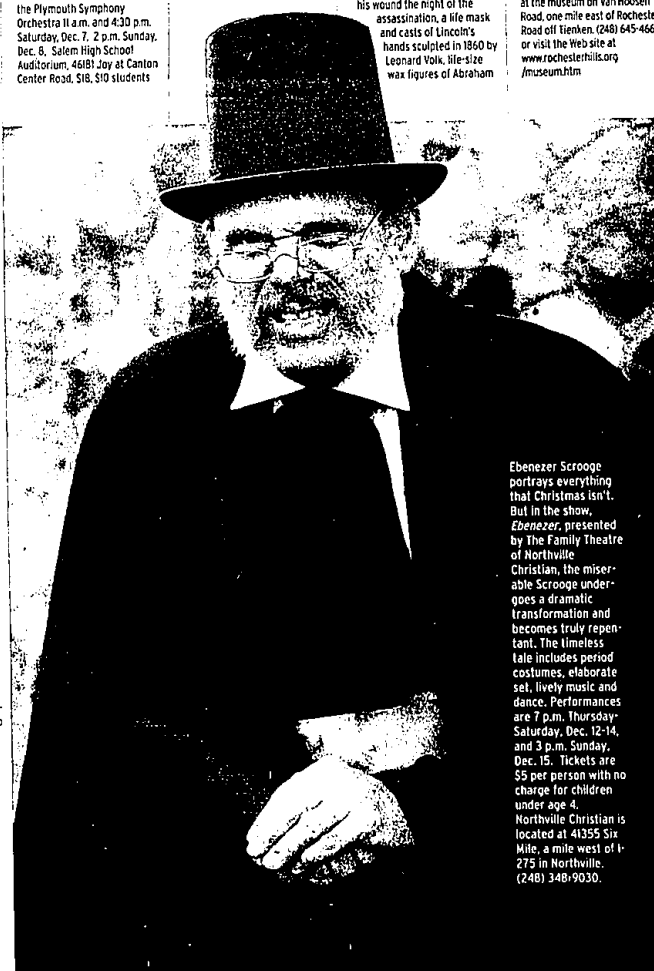
Schoolcraft College Jazz

Jazz Combos 7:30-8 p.m. and Big Band 8 p.m. Monday, Dec. 9, in the Waterman Center on campus, 18600 Haggerty, Livonia, No charge.

POPS/SWING/CABARET

Congregation B'nai Moshe

Third Annual Cabaret Night Music Schmilch 8 p.m.



Ebenezer Scrooge portrays everything that Christmas isn't. But in the show, Ebenezer, presented by The Family Theatre of Northville Christian, the miserable Scrooge undergoes a dramatic transformation and becomes truly repentant. The timeless tale includes period costumes, elaborate set, lively music and dance. Performances are 7 p.m. Thursday-Saturday, Dec. 12-14, and 3 p.m. Sunday, Dec. 15. Tickets are \$5 per person with no charge for children under age 4. Northville Christian is located at 41355 Six Mile, a mile west of I-275 in Northville, (248) 348-9030.

Been surfing lately?



Wait until you see what's on our website—grab your mouse and check it out! www.observerandeccentric.com