

BROOK

1895

lifestyle collection

MAX BROOCK

(248) 644-6700

(248) 646-1400

(248) 625-9300

(248) 656-6500

(248) 626-4000

(248) 647-7200



ORCHARD LAKE NEW CONSTRUCTION! Built in 2000. Unprecedented Westerly views with 135 ft of sandy beach. Situated on 1.25 acres with a private pond. Custom design and quality craftsmanship. 4 car garage. Gorgeous sandy beach! \$3,250,000 EDH-440AK Call 248-646-1400



TRULY AN EXCEPTIONAL IN TOWN ESTATE HOME. Lovely setting, quality materials & beautiful design throughout this 3 bdrm, 3 bath brick home. Must see to appreciate it's style. Formal LR, DR, library, FR, finished garden level. \$2,695,000 EDB-30BAT Call 248-644-6700



SPECTACULAR DOW RIDGE LAKEFRONT! 1.35 acres w/150 ft. of sandy frontage. Quality built with panoramic views from every window. Must see. \$1,850,000 EDH-00DOW Call 248-646-1400



AN AMAZING SETTING overlooking Lower Long Lake - 134 feet of shoreline. Lovely 5 bedroom brick colonial with quality throughout. Gourmet kitchen, custom family room, sunroom, master suite, pool, cabana house, dock, gated entry. \$2,200,000 EDB-30FRA Call 248-644-6700



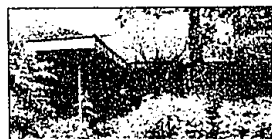
SPECTACULAR 1830 GREEK REVIVAL Registered historic 2.75 acre estate with 308 ft. on Minnow Pond. Features 3-story barn, carriage house w/studio, pool, 4 beds, 4 baths. Quality details. Private. \$1,250,000 EDB-30HAL Call 248-644-6700



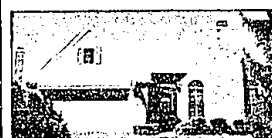
BLOOMFIELD COLONIAL w/dual staircase, library, 1st floor laundry, security system, central vacuum, partly finished basement, gourmet kitchen w/2 Subzero refig., 2 ovens, Corian countertops. 1st floor master w/huge jetted tub. 6 bedrooms \$1,250,000 EDB-60SUN Call 248-625-9300



BLOOMFIELD HILLS SCHOOLS! 7700 sq. ft. James Kahn home w/walkout lower level on just under 1 acre lot. 5 bedrooms, 4 full baths & 2 half baths. Prices extremely low \$103 per sq. ft. Exceptional value! \$800,000 EDH-75QUA Call 248-646-1400



HILLS OF LONE PINE. Dramatic warm contemporary ranch on private wooded cul de sac. 3 BR, 2 1/2 baths. Open neutral floor plan with soaring ceilings & walls of glass. Gated. \$699,900 EDB-81BAN Call 240-644-6700



FANTASTIC FREE STANDING CONDO on 4th hole of Heathers. 1st floor master, extensive moldings & custom work. Plantation shutters. Hardwood floors. Finished LL w/whet bar, full bath & bedroom. 3-4/5 FR w/fireplace. \$349,900 EDB-60SUD Call 248-644-6700



OVER 2500 SQ FT w/finished walk out on all sports Eagle Lake! Beautiful oak kitchen, hardwood floors and wall of windows overlooking the lake. Finished walk out has full bath and 2nd kitchen. \$349,000 EDH-87SHO Call 248-646-1400



CITY OF BLOOMFIELD HILLS! Exquisite home located in coveted Scenic Oaks! Finished to European standards. Finest of appointments & decor. Full commercial kitchen on main & lower level. Elegant master suites, 3 car garage, sauna & home theatre. 4/4.3 wooded grounds. \$2,950,000 EDH-35SCA Call 248-646-1400

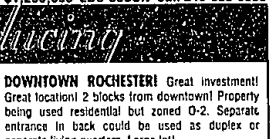
LOVELY GEORGIAN BRICK COLONIAL set on a private landscaped lot. 5 bdrms/3 1/2 1/2 baths, never kitchen with vaulted ceiling and cherry cabinets. Master suite, formal living room, sunroom, den, finished lower level. \$1,195,000 EDB-20HUP Call 248-644-6700

IMMEDIATE OCCUPANCY. Clarkston schools. 3000+ sq. ft. of open, convenient, family friendly, entertainment oriented living space. Great views of wooded, private paths from great room/breakfast nook. Hardwood flooring, oak kitchen. \$329,900 EDB-37WOO Call 248-625-9300

FABULOUS SANDALWOOD CONDO! End unit backs to wooded setting. Large cozy living room w/fireplace. Kitchen opens to private deck. 1st floor laundry. Master suite w/walk in closet. Jacuzzi tub. Finished lower level. 2/2.5 \$329,900 EDH-60ADA Call 248-646-1400



WEST BLOOMFIELD - Contemporary 4 BR, 3 BA ranch on a beautiful lot in a popular sub w/ Bloomfield Hills schools. New kitchen, HWDF floors, walk-out finished lower level, 3 car garage & inground pool. \$319,900 EDW-43QGD Call 248-626-4000



DOWNTOWN ROCHESTER! Great investment! Great location! 2 blocks from downtown! Property being used residential but zoned O-2. Separate entrance in back could be used as duplex or separate living quarters. Large lot! \$326,000 EDH-04UNI Call 248-646-1400

DARLING BRICK RANCH on a tree lined Birmingham street. Hardwood floors, never white kitchen with bay eating area. 2 car detached garage, fenced yard. Finished lower level with 2nd full bath. \$265,000 EDB-26HAZ Call 248-644-6700

GORGEOUS SPLIT LEVEL. Light, bright and open floor plan with two-story foyer entry, library and first floor master suite. Full basement and 3 car side-entry garage. Pilsone white kitchen, paver patio, sidewalks and more! Ulica schools. \$284,900 58LUZ Call 240-656-6500

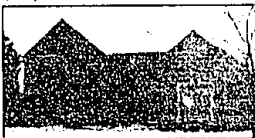
KEEGO HARBOR - WB Schools, Sylvan Lk privileges, beach & boat dock possible, loc. on dead end st. 3 BR, 2 BA, 1st flr master, fin. basement w/bat. HW flrs. Kitchen w/oak cabinets & eat in area. 1 car garage. Fenced back yard. 24 Hr. Info line 1-888-730-LIST, ID #530333. \$159,900 EDW-11BEE Call 248-626-4000



HUNTINGTON WOODS - 4 BR, 2.5 BA. Center entrance cape cod, charming & elegant. Partially finished basement. 2 car garage. Fireplace, bay window in LR. HWDF floors. Numerous updates. Excellent curb appeal. \$279,000 EDW-26HAR Call 248-626-4000



ACREAGE IN FRANKLIN - Magnificent estate size property in the heart of Franklin. Beautiful wooded ravine view from every room. Excellent condition, new kit, hardwood floors & bath. Open floor plan. \$650,000 EDB-51CAP Call 248-644-6700



CUSTOM ROCH. HILLS COLONIAL-Designed w/sophistication & class! Almost total renovation compl 5/02. 4 BD, 5 1/2 BA, 3400 sq. ft. + finished bsmt. Oak flring, neutral colors, gran cnters in kit, 3 car gar, paver patio & walk. Priv yard. \$499,900 EDR-56QL Call 248-656-6500



FARMINGTON HILLS - Outstanding value in this 2 BR, 3 BA condo in Chestnut Ridge. Large kit. w/White Bay cabinetry, MBR w/spacious MBA. Cathedral ceilings, crown moldings. 2 story foyer, 1st floor laundry. Great location. \$265,000 EDW-57AMB Call 248-626-4000



WEST BLOOMFIELD - Desirable Gretche & Scotch Elem. & Abbot Middle School in popular Willow Farm. 3,500 SF, 4 BR, 2.5 BA w/finished walkout LL. Deep back yard w/towering evergreens. Enormous master suite w/ig. walk-in closet, convenient 2nd flr. laundry. \$267,500 EDW-44WEA Call 248-626-4000



DELUXE PRIVATE ENTRY upper 2 bdrm-w/bath ranch in The Heathers. Open floor plan in cul-de-sac location. Volume ceilings, many windows, GR w/ig. lpl & doorwall to deck. Many updates within past yr. Club membership available. \$249,900 EDB-00NEW Call 248-644-6700



SOUTHFIELD - Absolutely stunning 3 BR, 3 BA ranch. New oak wood floors, new windows, new furnace, new kitchen, new bathrooms, new carpeting, wood burning fireplace. New landscaping. Don't miss this one it won't last. \$219,000 EDW-04PIE Call 248-626-4000



FULLY RENOVATED HISTORIC HOME boasts 3 bedrooms & 2 full bathrooms. Solid wood trim and hardwood floors abound in this beautiful home. Large kitchen overlooks lovely yard. Many updates. Minutes from downtown Clarkston & I-75. Home warranty. \$194,900 EDH-23AND Call 248-646-1400



BEAUTIFULLY MAINTAINED Private 1/5 acre treed lot! Many updates; roof, windows, ac, newer full master bath, newer kitchen & appliances, sec alarm, carpet & extra large deck! Crescent Lake privileges too! \$177,900 EDH-33HAN Call 248-646-1400



CHARMING CAPE COD located on a tree lined street w/1 acre lot. Two rental units. Hardwood floors, cove ceilings. Great investment opportunity or could be converted to single family. Location! Location! \$184,900 EDH-600AK Call 248-646-1400



KEEGO HARBOR - Cass Lake privileges. Great starter ranch with 3 bedrooms, 1 bath, updated kitchen with appliances, newer furnace & electrical. Full basement. West Bloomfield schools. \$194,900 EDW-06NOS Call 248-626-4000



BIRMINGHAM - Great location, just minutes from downtown Birmingham and close to Somerset Mall. This 2 BR condo is conveniently located near a park. Priced right, easy to show. Call Today! \$950 per mo. EDW-066RA Call 248-626-4000