



Accents

Red-hot interiors

Just in time for Valentine's Day, Studio Jewell presents Love is in the Air, an exploration of feng shui techniques that enhance romance and sensuality in the master bedroom. Scheduled 7-9 p.m. Monday, Feb. 10, at Studio Jewell, 501 S. Washington in downtown Royal Oak, with feng shui specialist Catherine Hiker, the class is priced at \$25. For more information or to register, call (248) 414-6114.

Cabin fever

Does that quintessentially American in-the-woods look give you fever in a good way? If you live in a log cabin, lodge-style home or "Big Sky Country" abode, maybe we could stop by for a visit and cup of cocoa. We'd like to share the beauty and warmth of these homes — and all their trimmings — with readers in an upcoming issue. Contact Nicole Stafford, At Home writer, by phone at (248) 901-2567 or e-mail at nstafford@oe.homecomm.net

Handy help

The Installers Inc., headquartered in Pontiac, helps install residential home improvement products. Its motto, "You Buy It, We Install It," means that the company does all the hard work. It offers installation professional-ais for



simple projects and focuses on working with homeowners and home improvement product retailers. "People are always interested in improving the quality of their homes but may not have the expertise or resources to complete a home improvement project on their own," said Eric Sherrill, president and co-founder. Call The Installers Inc. at (248) 253-7052.

Star designer

Nazk Morganroth, professional member of the American Society of Interior Designers and head designer and CEO of Sherwood Studios of West Bloomfield, designed NBA star Derrick Coleman's Detroit home.

The bedroom is featured in *Celebrity Bedroom Retreats: Professional Designer Secrets for 40 Star Bedrooms*, published in September.

Author Joanna Lee is an interior designer and writer living in New York City. She calls the book a picture showcase for some of the world's most prominent modern designers.

Eight-foot-high doors and lowered floors made Coleman's house more in proportion to the Philadelphia Tigers forward, who is nearly 7 feet tall. Coleman's contemporary bedroom features white wall units, white carpet and "framed" primary color high-lights.

A large entertainment center boasts a 70-inch television and surroundsound music system.

Sherwood Studios is at 6644 Orchard Lake Road, south of Maple. Call (248) 855-1600.



Downright decision

Finding the right down comforter depends on your needs

BY NICOLE STAFFORD
STAFF WRITER

If you don't have a down comforter but want one, it's probably obvious now is an ideal time.

Perhaps you've been putting off the purchase.

That's understandable because buying a down comforter is an investment both in terms of money and time.

Cost aside, there's a plethora of factors to weigh before making a purchase. And, you should consider such particulars as the type of goose down used and the comforter's outer shell, if you want to go home with a comforter that meets your needs.

Before delving into the technical side of down comforters, first assess your personal sleeping habits.

SLEEPY TIME

"When people come in looking for comforters, we ask them a series of questions about how they sleep," said Michelle Albrecht, store manager at Scandia Down at the Somerset Collection in Troy.

These questions are your starting point, and the answers will guide you to the right comforter, she said.

Most are aimed at determining your sleeping temperature.

Do you get cold or hot during sleep? Is your home cooler at night because you

lower the thermostat or like to sleep with open windows? Are you going through menopause? Do you plan to use your comforter only in the winter or all year long? If you don't sleep alone, what is your partner's body temperature during sleep and how does it affect yours?

"The problem with couples, you usually have one that's warm and one that's cold," said Albrecht.

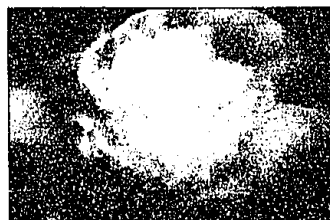
If that's the case, there's a solution. Yes, believe it or not, a single question has directed you to the appropriate product: a couple's comforter. Scandia Down's version has two side-by-side boxed compartments for custom filling with Hungarian white goose down of 600 to 700 fill power.

WAIT, WHAT'S THE FILL POWER?

If you've forayed into the world of down before, you've encountered the phrase "fill power," and, yes, we've stumbled into the technical side of down shopping.

Fill power, which is a standardized rating of the quality of down, and ultimately its ability to insulate and keep you warm, is what's important to understand when shopping for a comforter.

The difference between down of higher and lower fill powers is the density and size, maybe even fluff-



PHOTOS BY JERRY ZEINWEY | STAFF PHOTOGRAPHER

Above left, the loft of down products brings a cozy, plush feeling to the bedroom, as with this grouping of down pillows, comforter, sheets, shams and duvet cover by Scandia Down. Above, the type of goose down feathers in a down product affects quality. Sought-after Siberian goose down, for instance, is denser in the center.

ness, of individual down clusters.

But don't confuse fill power with weight. In fact, the relationship between fill power and weight are typically inverse.

"What can be very confusing in the marketplace is fill power versus fill weight," said Teresa Matz, quality manager for Eddie Bauer Home, which has retail locations at Briarwood Mall in Ann Arbor, the Village of Rochester Hills in Rochester Hills and the Somerset Collection in Troy.

With down, heavier isn't necessarily warmer.

Sought-after Siberian white goose down, for instance, is more dense at the core and, thus, keeps you warmer than goose down from China, which is less dense. In other words, you need less down from Siberian than Chinese goose to obtain a relative level of insulation from a product.

WHY DOWN, ANYWAY?

"It traps your own body heat, so that's why it keeps you at a more even temperature," said Albrecht at Scandia Down.

At the same time, it pulls

PLEASE SEE DOWN, C2



Among the many factors that affect the quality and price of a down comforter is the cover.

Home tour shows style, school spirit

BY MARY KLEMIC
STAFF WRITER

School spirit as well as beautiful houses and furnishings will be shown on the Groves High School Parent Senior Committee's first Heart of the Home House Tour.

The tour, featuring six attractive residences in the Groves attendance area of Franklin, Bingham Farms and Beverly Hills, will take place Sunday, Feb. 2 (see related article). It will raise money for the senior party for the class of 2003,

which gives students a safe place to celebrate the night of graduation.

Organizers describe the event as "a high-quality tour that will provide enjoyment to the most discerning home buff." Most of the houses have never been opened for a public tour before.

"We're very excited about it," said Deb Martin, who, with Toni Grinnan, chairs the committee.

"We have a wide variety of houses," Martin and Grinnan have been

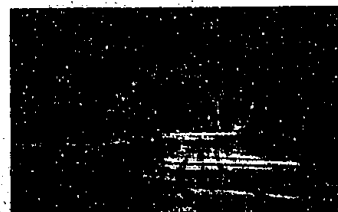
on the fund-raising committee for the graduation party. Grinnan has also organized garden tours for the Franklin Garden Club, of which she is a member.

"I kept thinking we could do a house tour," Grinnan said.

The tour promises a treat for the cars as well as the eyes, as Groves students will be playing musical instruments in some of the houses.

One of the featured residences is a Victorian farmhouse that was

PLEASE SEE TOUR, C4



This Franklin residence, with 17th century Tudor style design, will be featured on the Heart of the Home House Tour. The tour will benefit the safe graduation party for the class of 2003 at Groves High School.

**Love and marriage...
go together like a horse and carriage**

So the song goes. Weddings don't go together at all without a lot of intense planning. Look for our 2003 Wedding Guide on Sunday, February 16 and discover ideas, advice and interesting businesses to assist with your wedding.

Advertisements: There is still time to reserve your space in this popular edition. Call 734-233-6100 or 248-391-0810.