

At Home

INTERIOR DESIGN ■ DIY ■ GARDENING

Baby Studio
BOSshess caters
to families. C5

FARMINGTON COMMUNITY LIBRARY
FARMINGTON HILLS BRANCH
32737 West Twelve Mile Road
Farmington Hills, MI 48334-5302

Accents

Red-hot interiors

Just in time for Valentine's Day, Studio Jewell presents Love is in the Air, an exploration of feng shui techniques that enhance romance and sensuality in the master bedroom. Scheduled 7-9 p.m. Monday, Feb. 10, at Studio Jewell, 501 S. Washington in downtown Royal Oak, with feng shui specialist Catherine Hiker, the class is priced at \$25. For more information or to register, call (248) 414-6114.

Cabin fever

Does that quintessentially American in-the-woods look give you fever in a good way? If you live in a log cabin, lodge-style home or "Big Sky Country" abode, maybe we could stop by for a visit and cup of cocoa. We'd like to share the beauty and warmth of these homes - and all their trimmings - with readers in an upcoming issue. Contact Nicole Stafford, At Home writer, by phone at (248) 901-2567 or e-mail at nstafford@homecomm.net.

Honoree

The Michigan Green Industry Association has announced that Executive Director Diane Andrews has received the Emerging New Leader Award from the Michigan Society of Association Executives, the highest honor the MSAE bestows upon a new association staff leader. The MGIA, with offices in Bingham Farms, is a trade association with more than 750 members in the areas of landscape construction, lawn maintenance, irrigation, lawn spray, tree services, snow removal and landscape supplies. For a complete listing of its membership, call (248) 646-4992 or visit www.landscape.org. Andrews received the award because of her hard work and dedication to moving the association and its members forward since her appointment to the position in 2000, said Dan Banks, chairman of the board for the MGIA.

Custom maps

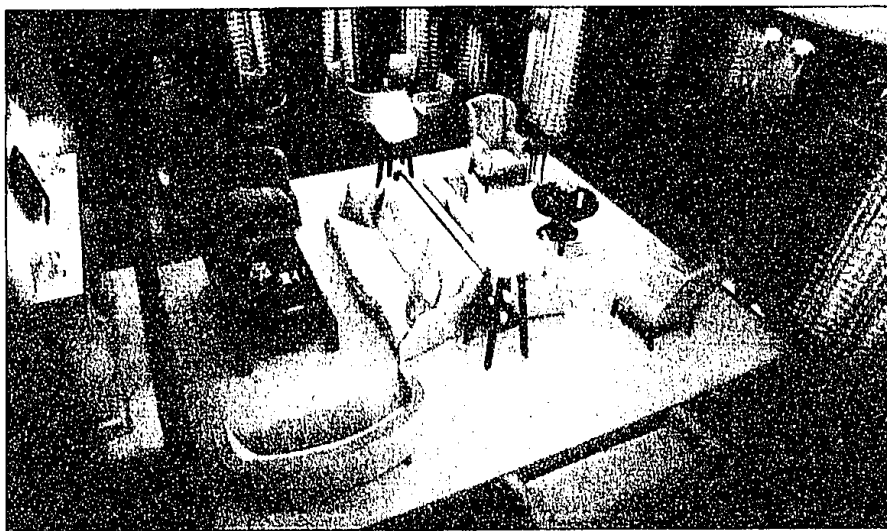
Hunters, property owners and outdoor enthusiasts can order aerial photo maps from mytopo.com and have a waterproof or glossy copy shipped to their doorstep within 48 hours.

Like mytopo.com's popular print-on-demand service for topographic maps, the aerial photos can be centered anywhere in the United States, personalized with a name, and customized with the customer's choice of title, navigational grids and scale. The photo maps measure 18 by 24 inches, and cost \$14.95 plus shipping. The maps are made from aerial photographs taken by the U.S. Geological Survey's National Aerial Photography program. Generally, they range in date from 1990 to present.

The company recently expanded its topographic map offering. New customers can choose from three sizes: 18 by 24 inches for \$19.95, 24 by 36 inches for \$14.95, and 36 by 44 inches for \$29.95. For more information, visit www.MapCard.com or www.mytopo.com, or call (866) 587-9004.



Bloomfield residence shows spectacular interior



PHOTOS BY TOM HOFFMEYER | STAFF PHOTOGRAPHER

Above, Michael and Janie Roth's spectacular Bloomfield home will be the site of the Preview Party for the Snow Ball charity event this year. Top left, the landing on the second floor is arranged in a sitting area. Top right, the master bedroom features a chandelier in a recessed part of the ceiling.

Each room with a view

BY MARY KLEMIC
STAFF WRITER

Talk about a "room with a view."

When Michael and Janie Roth built their house in Bloomfield, they wanted to keep the beautiful view offered by the wooded setting.

Not only was this accomplished, but each room of the residence - which is about 12,000 square feet - is a beautiful scene itself.

The house will be the site of the Preview Party for this year's Snow Ball for Variety, The Children's Charity. The party will take place 7 p.m. Thursday, Feb. 6 (see related story). Construction of the Roth residence was completed in fall 2002.

Jeffrey King of Jeffrey King Interiors of Birmingham and Richard Ross, vice president and designer of the firm, fashioned a smooth combination of charming elements of Old World and modernist styles.

"(The Roths) are very sophisticated... I wanted to feel that (in the decor)," Ross said.

Antiques, family heirlooms, and souvenirs from the Roths' world travels accent the various areas. Colors and fabrics throughout the house are light, which doesn't distract from the outdoor panorama presented by the windows.



The bed in a child's room looks like a large window seat. Leafy tree branches are painted on the surrounding walls.

PLEASE SEE VIEW, C4

Landscape architect helps beautify Southfield Civic Center, parks

BY MARTY FIGLEY
CORRESPONDENT

You may wonder who is responsible for all the beautiful flower beds - including the Community and Veterans gardens - at the Southfield Civic Center.

Not many cities have a landscape architect on their payroll, but Southfield has Merrie Carlock, who has been with the city in that capacity for 18 years.

Carlock has two degrees from the University of Michigan - a B.S. degree from the School of Natural Resources and Environment and a master's degree in landscape architecture. She is a registered landscape architect in the state of Michigan.

"I have seen lots of changes in those years," Carlock said. "I do park design, planning, design all the flower beds throughout the city - for instance the traffic islands on Telegraph between 1-696 and 12 1/2 Mile."

Carlock also writes grants for land acquisitions and for park development projects, such as play lots and new parks, which she designs. She then hires outside contractors to build them from the plan she provides.

Some maintenance is contracted out; city employees do some. Bob Murray, who has a horticulture degree from Michigan State University, is Carlock's right-hand helper. He is in charge of city beautification and has two full-time gardeners who work under him, Bruce



MARTY FIGLEY

Beds around the Southfield Civic Center are planted with colorful flowers.

Richards and Laurie Dillon. "All the annual flowers are purchased from different suppliers each year, and the soil is amended in the spring when

the annuals go in," Carlock said. "Bulb booster is used in the fall when the bulbs are planted. The perennials are divided when they grow large enough

and then are replanted in appropriate beds."

Last year, Carlock and

PLEASE SEE ARCHITECT, C2

Love and marriage...
go together like a horse and carriage



So the song goes. Weddings don't go together at all without a lot of intense planning. Look for our 2003 Wedding Guide on Sunday, February 16 and discover ideas, advice and interesting features to assist with your wedding.