

At Home

INTERIOR DESIGN • DIY • GARDENING

Camp

Fun abounds for the younger set.
Life, CS



Accents

Warmth of spring

Pierre Deux brought French Country style to the United States more than 30 years ago, but today brings the joyful, warm patterns of the Provencal spring to America. Their exclusive Provencal prints include



timeless toiles, floral and fruit prints and coordinating geometrics and fabric bag collection that provide perfect carryalls for summer weekends.

Pierre Deux has added Renaissance this spring, a tapestry fabric that features flowers and fruits, symbolizing the rebirth of nature after winter, alternated with stripes decorated with a pattern inspired by those of the Renaissance period.

For more information, visit www.pierredoux.com or call (888) 743-7732.

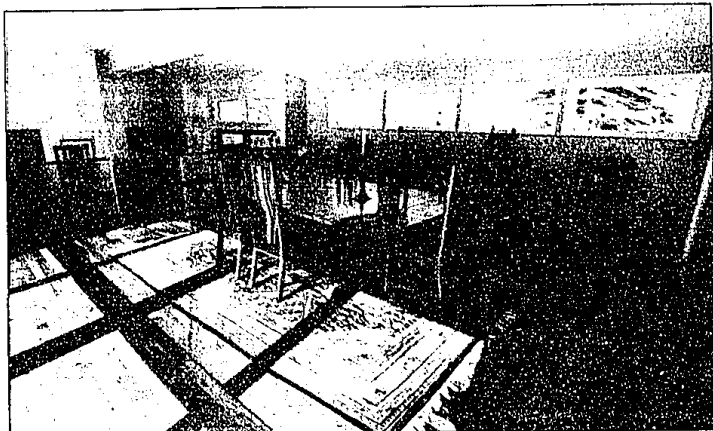
Raise the flags

Many Americans have flown U.S. flags in recent weeks to show support of our troops in Iraq, but it is critical for homeowners to remember some other flags for their own personal safety.

The state's utilities and the Michigan Damage Prevention Board promote the Raise the Flag campaign in the month of April to remind residents to call MISS DIG at (800) 482-7171 before digging that deck, fence, sprinkler system or landscaping project in the yard.

Every year, there are nearly 10,000 "dig-in" damages to underground utility lines in the state. Homeowners who didn't follow established safe digging practices are responsible for causing about one-third of these damages. The consequences can include service interruptions, fire, property damage, personal injuries, and even death. The MISS DIG system is Michigan's one-call source for locating underground utility lines, receiving more than 12 million requests since the one-call center opened in 1970. The vast majority of staking requests are filled within three business days without cost to the caller. The utilities will be marked with colored flags or spray paint to indicate the different service lines below. If homeowners happen to dig or excavate near these lines, they should hand-dig to expose the lines before using power equipment. It can be difficult to accurately estimate how deep the utility lines might be buried.

The best way to expose utility lines is to create a narrow trench perpendicular to the staked direction of the buried line by removing dirt a few inches at a time, rather than plunging a shovel into the soil. Remember that a shovel edge can cut a utility line just as easy as a backhoe blade. When you expose a short portion of the utility line, you know its exact location and depth and can begin to carefully use power equipment in its vicinity.



The addition put on the residence of John and Gail Aiken by the McGovern Building Group serves as the dining room, large enough for Gail's gourmet dinners. Among the furnishings are a cabinet designed and built by John Aiken.

modernmission

Addition maintains house style as it expands space

John and Gail Aiken, of Bloomfield Hills have special talents. John is a gifted woodworker, whose furnishings are beautiful and functional. Gail is a gourmet genius, who loves to entertain with her dinners for 14 or more guests.

But the 1,600-square-foot ranch house, where the Aikens have lived since 1978, was somewhat inhibiting these interests.

After he retired as an automotive designer from the Ford Motor Co. five years ago, John wanted to keep busy with his passion for woodworking. He built pieces in a storage room that was about 7 by 10 feet in size, with space for a pegboard and little else.

"I had always thought I might return to woodworking," John said. "That was one of my first jobs as a teenager, working at a cabinetmaker's woodwork shop."

The dining room area was too small for the type of dinners Gail liked to prepare.

"I said to my wife, 'We have two new needs: You need a master dining room and I need a woodworking shop,'" John Aiken said.

The couple decided that instead of moving, they would have an addition put on the house.

The McGovern Building Group was hired, and built a 1,200-square-foot addition onto the house last year. Now the Aikens can do woodworking projects, and serve large numbers of guests, in distinctive style.

"I love it. It makes such a big difference," Gail said.

"It just has opened up the whole thing. It was very cluttered and dark in there before."

"We have noticed a trend in the Detroit area where homeowners are adding rooms in their homes to enable them to enjoy their hobbies and interests," said Terry McGovern,

president of the Bloomfield Hills firm.

"Many of the basement remodeling projects and additions we have done included game rooms, home theaters and even home exercise rooms. When people invest a large amount in a remodeling project, they want to make sure the addition fits their lifestyle."

STYLE MATCH

The project involved giving a brick facelift to the original cinderblock of the house, which was built in 1965. Still, the addition matches the architectural style.

"If the architect were here we believe he would be very pleased," said John, who was trained and educated in industrial design. "It looks as

PLEASE SEE MODERN, C4



The living room is contemporary in tone.



PAUL HERSHMAN/STAFF PHOTOGRAPHER

Lisa Valentine, 11, welcomes a visitor to her jungle-themed room.

Room's facelift highlights animals and greenery

BY KEN ABRAMCZYK
STAFF WRITER

Lisa Valentine liked the room.

Lisa, 11, had the chance to choose between two upstairs bedrooms and wanted that one, painted a pale gray, because "it was bigger." Her mother and father, Marcia and John Valentine, had relocated the family from one home to another in Plymouth.

But Marcia did not like the room's color.

"I can't imagine anyone even liking (that color), so we'd thought we'd do something different," Marcia said. Enter a creative friend of Marcia's, and soon the three of them went to work.

Bamboo shoots sprouted on a lamp stand. Vines spread their way on a border along the ceiling. A monkey and an elephant stood on guard in the corners as table stands. Wooden paws stepped up the wall.

Soon, the pale gray room in the colonial home in Plymouth was transformed into a green jungle full of foliage and fauna.

THE MOVE

When John and Marcia Valentine moved to that home in November 2000, they loved their new digs.

The Valentines decided to spill up two upstairs bedrooms at the same time for Lisa, and 13-year-old Lauren. Lisa is a fifth-grader at Plymouth Christian Academy, while Lauren is an eighth-grader there.

Lisa wanted the jungle theme because "I like animals," she said, and Mom liked the idea, and off they went to the stores and garage sales.

They picked out a pear-colored paint, which resembles an olive green color, from a Sears store in Canton. Marcia's friend, Carol Krupa of Dearborn, picked out wallpaper resembling tropical grasses from a paint store in Dearborn. Lisa and her mother found animal handles for her drawers at Home Depot.

They bought chairs and a barrel at garage sales, animal lamp stands on clearance from Michael's. They sewed pillows. They painted three or four

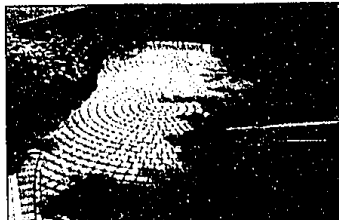
PLEASE SEE JUNGLE, C2

Story by Mary Klemic
Staff Writer

MARKET PLACE

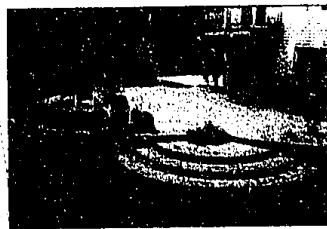
Submissions

Do you have a special item you'd like to showcase in Marketplace on the front of At Home? We'd like to feature it! Send a photo or slide of the piece, along with information, to: Ken Abramczyk, At Home editor, Observer & Eccentric Newspapers, 805 E. Maple, Birmingham 48009.



Rave over pavement

Enhance your yard with a well-designed patio or deck. The paving shown here from Michigan Brickscape Company in Rochester are examples of the wide variety of materials - as well as styles of patios - available. Fun! Vintage bricks give an Old World look to the at-grade patio (right), while Fun! Symmetry bricks dress the elevated patio (left). Call Michigan Brickscape at (248) 650-2900.



Find a home for your horse.

Rocking horse, household things, whatever...call today and sell them quickly with a classified ad—1-800-579-SELL