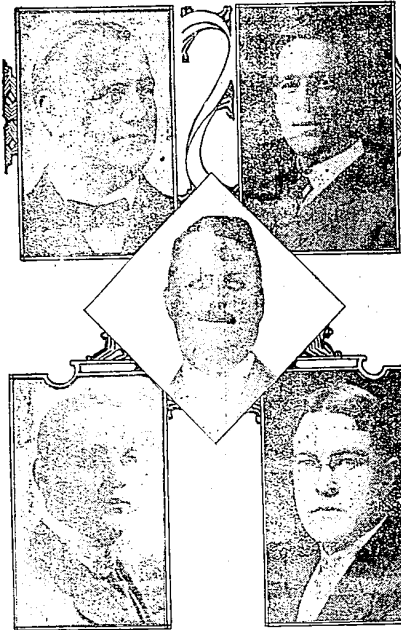


Michigan State Fair Grows Greater Every Year Because of Able Management by Its Officers

THOMAS M. SATTLER of Jackson, Mich., Superintendent of Education.

J. E. HANNON of Detroit, Secretary and Manager.



THOMAS E. NEWTON of Detroit, President.

W. C. MORGAN of Detroit, Superintendent of Night Horse Show.

V. W. COFFIN of Detroit, Superintendent of Farm Machinery.

President Thomas E. Newton of the Michigan State Fair and some of his able assistants.

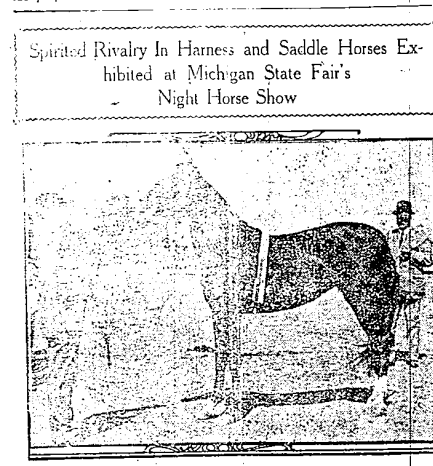
Michigan, died in the wool in the innovations have been introduced into the Michigan State Fair, Sept. 10 to 21, than ever brought forward in one year. The man most long ago decided that the Michigan State Fair should be "so different" from all other fairs that attention would be drawn to it as to this year, and President Thomas E. Newton, Secretary-Manager J. E. Hannon and others have worked for it.

In previous years many new and interesting attractions, such as the automobile show in its own specialty building, the removal of the Midway, the new "corner" of the grounds from the Michigan State Fair of 1912 is at very center of the Fair grounds and other features drew attention to Michigan.

This year the Boys State Fair School, the Michigan Model Farms, the new to the state.

There are many other features of the Michigan Model Farms, the new to the state.

Spurred Rivalry in Harness and Saddle Horses Exhibited at Michigan State Fair's Night Horse Show



At the Night Horse Show, Michigan State Fair, which brings together all the great show horses of the country.

In connection with horse races at the Michigan State Fair will be the night horse show, which is an annual feature of merit and very important. The efforts of the officers in charge have been rewarded every year with an attendance that has been considered wonderful, and the shows have steadily increased in interest.

The number of stables this year again exceeds the previous year. Precisely all classes for harness and saddle horses are included. It is invariably the rule that there is a big show in every class, from the brilliant four and tandems to the pony classes for

the children. The money goes to the night horse show, and the rivalry is intense. The spectators have a show provided every minute until the ribbons have been placed.

Every effort has been made this year to make the show better than former shows, and W. C. Morgan, the manager, has been successful in obtaining a splendid entry list.

This night horse show is the real picture article at the Michigan State Fair and no one called "Nancy" affair. Last year's competition was keen and interesting, every minute, and the splendid feats of horsemanship and magnificent animals shown created the utmost enthusiasm.

GRANGE FAVORS EQUAL RIGHTS

Working Vigorously to Secure Votes For Women.

FARMERS' WIVES WANT BALLOT

See Opportunities to Accomplish Much For the General Good of Society. Taking Interest in Affairs Outside the Home—Equality in the Grange Proves Princess of Women For Equality in Citizenship.

By IDA L. CHITTENDEN, Lansing, Manager of the Michigan State Grange Equal Suffrage Campaign Committee.

Nearly fifty years have elapsed since the Order of Patrons of Husbandry was first organized. The original idea of this nation wide organization came from Oliver H. Kelly, who will ever be known as the patron saint of the grange. Associated closely with him were William Ireland, John Trimble and Agnes Bartlett, also Mr. Kelly's niece, Miss Caroline A. Hall, to whom belongs the credit of women being received into membership in this order with the same rights as men.

So from the first within the ranks of the Patrons of Husbandry men and women have had equal rights and privileges. Always they have indulged in the suffrage, but it remained for the Michigan state grange to be the first of the state granges to make an aggressive campaign in behalf of this movement.

Endorsing a measure is one thing to finance it and work for its success



DR. ALFRED SCOTT WARTHIN.

Dr. Alfred S. Warthin of the University of Michigan is an eminent pathologist and biologist whose scientific achievements are widely known in Europe and throughout the world.

Dr. Warthin has long been an advocate of woman's suffrage and only recently gave utterance to the following: "I believe absolutely in woman's suffrage and believe that the two sexes represent a biological division of labor, and the race can never be adequately represented in matters pertaining to government without woman's aid in all that pertains to national housekeeping, which is all that government and politics should be. I believe fully in the partnership of the sexes and that the partnership should be an active one with equal rights for each partner and the opportunity for equal type of careers all that concerns life. I do not believe that the social evil will ever be controlled until woman has an active participation in municipal and federal lawmaking. I believe that when women have the right to vote the protection of women and children as far as labor conditions are concerned will be brought about, but never as long as men alone make the law."

PHOTOGRAPH BY J. E. HANNON

ROLLA WELLS IS EARLY ON THE JOB

Democratic National Treasurer Is After Small Contributor.

THE PEOPLE ARE TO HELP

There is to Be No "Tainted Money" Used in Bleeding Wilson and Marshall.

New York.—A small, smooth shaved, middle-aged man with a coat of tan that gave evidence of much outdoor life recently came into the Waldorf carrying a suit case early in the afternoon and registered as "Rolla Wells, St. Louis, Mo."

The smooth shaved little man, who is to be the watchdog of the Wilson campaign money from now on, was asked for vital statistics, whereupon it was learned at first hand that he is a banker and ex-mayor of St. Louis. He is fifty-six years old, was graduated at Princeton in 1876 or thereabouts before Governor Wilson was graduated; that he has two sons who are Princeton men and a grandson who some day will be a Princeton man; that he is a native of New York; that he is a member of the Wilson organization selected him as his treasurer and that just at present the one thing that sticks out in the appointment in his mind is that the new job is in essentially upon a most beautiful vacation which he and Mrs. Wells had been enjoying in a camp at Little Trowers bay, Michigan.

Mr. Wells believes in getting at his desk at 6 o'clock in the morning.

"We are going to raise our campaign fund through the small contributions," said Mr. Wells.

"I am sure that a large part of the money will be raised by popular subscription."

"The people have confidence in Woodrow Wilson, and they will give what they can of their means to elect such a man president."

"I am a great believer in publishing broadcast, before and after election, the various contributions made."

"There are men who can well afford to give the committee \$5,000, but I want to assure the public that we are not going to have any tainted money."

"We are appealing to the people, and we are relying on them to help elect Wilson and Marshall."

"I have two boys who have been graduated from Princeton, one five years ago and one seven. But it is not because ours is a Princeton family that I like Governor Wilson. He is a great big man and the type that we should have in public life."

Catarrh Can Be Cured

With Local Applications. As they cannot reach the seat of the disease, Catarrh is a blood poison that is not cured by local applications. It is a blood poison that is not cured by local applications. It is a blood poison that is not cured by local applications.

Representation is trinity.

To be interested in the things outside the home has proved of inestimable value to women on the farm and will have a still greater influence for good when the husband and wife are equal in the rights of citizenship as well as possessing equal rights in the grange.

NEW YORK CLIPPER
THE GREATEST THEATRICAL AND SHOW PAPER IN THE WORLD
PUBLISHED WEEKLY, \$4.00 PER YEAR.
BEST NEWS AND BEST ARTICLES ON AVIATION
BY WELL-KNOWN EXPERTS
SAMPLE COPY FREE
Address NEW YORK CLIPPER
New York, N. Y.

When in DETROIT Stop At

The New Hotel Hermitage

Congress and Bates Sta.
Opposite the New Colony Theatre

Rates Reasonable
Meals and Luncheon
Sea Foods in Season

Finest Bar East of Woodward Ave.
SMITH & JONES, Props.

Monuments of Quality

Skerritt-Lyon Granite Co.

PONTIAC, MICH.
Tel. Phone 1292 J

PLYMOUTH, MICH.
Bell Phone 23

Independent 215

THE ANNUAL TRAVEL MAGAZINE

"Water Way Tales" Published by D. & C. Line Sent to You Free.

The latest contribution to the literature of travel is the 250-page book issued by the D. & C. line. It contains interesting stories and is beautifully illustrated with fine halftones of scenes along the D. & C. Coast Line to Mackinac. Sent anywhere upon receipt of ten cents to "prepay postage. Address, D. & C. Navigation Co., Detroit, Mich.

OVER 65 YEARS' EXPERIENCE
PATENTS
TRADE MARKS
COPYRIGHTS &c.
Anyone sending a sketch and description of an invention or design to the undersigned will receive a free opinion as to its patentability. The undersigned also writes and secures patents for inventors. He is a member of the American Patent Law Association and is a resident of the United States. He is a member of the American Patent Law Association and is a resident of the United States. He is a member of the American Patent Law Association and is a resident of the United States.

FOLEY'S HONEY AND TAR
Foley's Kidney Pills
Foley's Kidney Pills

DETROIT PUT-IN-BAY SANDUSKY CEDAR POINT
Daylight Trips to Cleveland \$1.25
Steamer "Put-in-Bay" (New) Four thousand passenger capacity. Largest dining deck on the Lakes. Continuous music. Ocean steamer chairs. Private parlors. Commensal dining. Special rates. Free word-of-mouth service. "Put-in-Bay" (New) Four thousand passenger capacity. Largest dining deck on the Lakes. Continuous music. Ocean steamer chairs. Private parlors. Commensal dining. Special rates. Free word-of-mouth service. "Put-in-Bay" (New) Four thousand passenger capacity. Largest dining deck on the Lakes. Continuous music. Ocean steamer chairs. Private parlors. Commensal dining. Special rates. Free word-of-mouth service.

THE CHARM OF OUR SUMMER SEAS
Spend your vacation on the Great Lakes. The most economical and enjoyable way to enjoy the summer months. Spend your vacation on the Great Lakes. The most economical and enjoyable way to enjoy the summer months. Spend your vacation on the Great Lakes. The most economical and enjoyable way to enjoy the summer months.

CONGRESS CARDS
For Social Play—Artistic—Elegant—High Quality.
New Design—100 Cards—1000 Illustrations.
BICYCLE CARDS
Use throughout the world for general play.
Club—Indispensable—All-cushion or Ivory Finish.