

# At Home

INTERIOR DESIGN • DIY • GARDENING

**Garden variety**  
Plymouth garden  
walk features many  
different styles. C8



## Accents

### Adding on

Instead of leaving a familiar home, neighborhood and schools, many families are opting to add on to their existing homes

rather than picking up and moving. "The most important reason to remodel is that it makes a home more enjoyable to live in," said Adam Helfman, president of the Fairway Construction Co. in Southfield. "While this can't be measured in dollars and cents, it's worth considering along with the increased resale value."

When remodeling, homeowners can customize their homes to meet their needs and desires. Selling a home and moving costs about 8-10 percent of the value of the current home, most of which includes items that don't increase a home's value. Remodeling projects that bring homes up to the level of other homes in the neighborhood are a good investment, according to Fairway. Potential buyers will compare your home to new homes. Some of the design trends in new homes are great rooms, master bed and bath suites and larger kitchens.

Fairway Construction is a fourth-generation builder with remodeling projects under way in Wayne, Oakland and Macomb counties. Fairway completes nearly 400 remodeling projects each year. The company has been named one of the nation's top 50 remodeling firms by Remodeling Magazine.

### Gardening

During the past few years, the container gardening trend has grown and flourished. Busy people want gardens that are quick, easy to maintain and provide immediate decoration. Container gardening is the solution for everything from patios in high-rise apartment buildings to spacious decks surrounding suburban homes.

"Container gardening is like the plug-and-play version of gardening," said Josh Schneider, Proven Winners spokesperson and host of DIY network's *First Time Gardener*. "You don't have to worry about soil problems because the potting soil used in the containers is perfect. Once you plant your flowers, your garden decorations are ready for use."

Container gardening lets creativity blossom. While prefabricated gardening containers are available at garden centers, the fun lies in finding unique items that fit an outdoor decorating style. Anything that can be filled with soil and has a good drain makes an ideal container. Watering cans, wash tubs and antique cool-look items are examples.

Planting in odd numbers and using a combination of structure, form and color are important steps in designing containers.

The structure comes from plants with height and gives the container an airy, fresh look.

The form is in the trailing items that drape over the edge of the container and color is provided by flowers.

Learn more about container gardening at the Proven Winners Web site at [www.ProvenWinners.com](http://www.ProvenWinners.com)



Linda Chayka stands with one of the many planter boxes in her garden. She used four-colored lobelia with purple, blue, violet and white flowers.

MARTY FOLEY

## Made in the Shade

Artist's garden will be featured on Rochester walk

BY MARTY FOLEY  
CORRESPONDENT

Linda Chayka, an artist, owns a beautiful shade garden.

She has placed many pieces of artwork among the great varieties of superb plants and has used her artistic instincts to create her garden.

"I don't like to follow strict rules for color," Chayka said. "I run a test to see what works together. I'm not bogged down with rules. It's just fun if you can't break a few rules."

"A garden is just an evolution. If something doesn't work, I pop it out and change my mind."

Chayka's garden and four others will be at their best Thursday, June 19, when the Rochester Branch of

the Women's National Farm and Garden Association presents its annual Garden Walk.

### ALL SEASON LONG

Chayka ensures that there is something to enjoy throughout the season with her large variety of plants. Huge hostas such as Gold Standard, Francis Williams, Royal Splendor and Crossa Regal, with blue leaves, make a statement and add permanency to the flower beds. An interesting hosta, Elephant Ears, will produce big white flowers in August.

Many different ferns also love this site and add their graceful foliage,

PLEASE SEE GARDEN, C5



This birdhouse was purchased by Chayka at the Cincinnati Flower Show, where she learned about scented geraniums.

## MARKET PLACE

### Submissions

Do you have a special item you'd like to showcase in Marketplace on the front of At Home? We'd like to feature it!

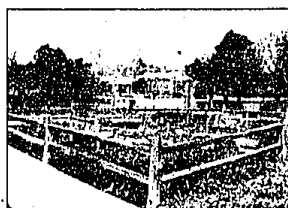
Send a photo or slide of the piece, along with information, to: Ken Abramczyk, At Home editor, Observer & Eccentric Newspapers, 805 E. Maple, Birmingham 48009.



### Old World Feel

Molly MacKay is expanding her business Mollycoddle into the decorative tile market. A variety of Molly's photo-graphic tiles from Italy and France are printed onto imported Italian tile and tumbled marble using a heat-transfer process. The tiles have a textured, distressed appearance, which make a beautiful backdrop for many of her European images. Some of the images are printed onto a glass ceramic tile with a smooth finish for individuals who want a more contemporary look. The results are timeless masterpieces that can be used as trivets, a decorative wall hanging or incorporated into custom tile work within your home.

Prices range from \$35-\$70. Tiles are available in either a matte or glossy finish in sizes of 4- by 6-inch, 12- by 12-



The Broughton House garden and three-estate type gardens will be featured in the Franklin Garden Walk on Wednesday, June 18.

## Franklin's walk celebrates club's 50 years

Walk features five-acre estates, Broughton House's 400-year-old tulips

BY KEN ABRAMCZYK  
STAFF WRITER

Gardening buffs and garden lovers who decide to attend this year's Franklin Garden Walk will see not only three estate-type gardens, each more than five acres, but will enjoy a spectacular show of tulips and other heirloom bulbs.

In recognition of the Franklin Garden Club's

50th anniversary year, the 2003 Franklin Garden Walk on Wednesday, June 18, will feature "A Retrospective of Tulips Throughout the Ages" at the Franklin Broughton House Garden with tulips dating from 1585-1975.

More than \$1,200 in heirloom bulbs have been planted, including wild tulips, early European, colonial, Victorian, cottage garden tulips and more than 31 varieties.

Heirloom plant materials are continually added at the Broughton House, according to Cindy Schiano, co-president and publicity chairperson.

Antique roses include Cardinal de Richelieu, Sade, Seven Sisters and Superb Tuscan and old-fashioned favorites

such as Kiss-Me-Over-The-Garden-Gate, black hollyhock, mullein and lavender.

Research shows that many of these were probably grown in the cottage-style gardens in Franklin Village in the mid-nineteenth century.

What: 2003 Franklin Garden Walk and Broughton House Garden

When: 10 a.m. to 3 p.m. and 6-9 p.m. Wednesday, June 18

Tickets: \$8 in advance and \$10 the day of the walk. Tickets can be purchased at The Apple Tree Room Boutique in Franklin. The Garden Club will serve a buffet salad lunch at the Franklin Community Church at two seatings: 11:30 a.m. and 12:30 p.m. Tickets are \$8 and seating is limited to 200. Garden walk and lunch tickets also can be ordered by mail by sending a check payable to "W.N.F. & G.A. Franklin Branch," P.O. Box 250194, Franklin, MI 48025-0194.

If ordering by mail, please be sure to specify lunch seating. On the day of the walk, tickets will be sold at the Franklin Village Gazebo located on the west side of Franklin Road between 13 and 14 Mile roads (next to Franklin Community Church). For additional information, call the Franklin Garden Walk hotline at (248) 851-2668. Look inside today's At Home section for a schedule of garden walks in Oakland and Wayne counties.

PLEASE SEE TOUR, C4