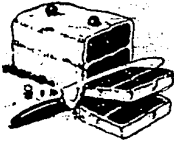


Slices of Delight!



Don't miss the enjoyment of eating slices of our delicious cakes. Drop in and take one home with you—then slice off a piece for dessert for each one at the table. They'll call for more! Many varieties baked fresh each day.

"BAKER BOY" BREAD
The Best—Made of the Best

Farmington Bakery

A. L. ROSS, Prop.
Phone 75

BIG CLASS OF SENIORS GRADUATE THIS WEEK

Baccalaureate services for the graduating class of the Walled Lake high school will be held at the Methodist Church on Sunday evening at 7:30 with Rev. A. K. MacBee delivering the address. He will take for his topic, "A Challenge."

The graduating class this year is the largest in the history of the school. Eighteen seniors will receive their diplomas at the graduating exercises at the school on Thursday, June 12th.

Finds 10,000 \$1 Bills
Chicago—Joe Dewory, ditchdigger, uncovered a tin box containing 10,000 \$1 bills. Joe immediately resigned his position and rushed to the bank to get bills of larger denominations. The bank pronounced his find "counterfeit"—and Joe went back to work.

A scientific society announces that death, theoretically, is not inevitable. Now it ought to get to work on taxes.—The Waterloo Tribune.

CHURCHES

Evangelical Church
Rev. A. A. Sauer, Pastor

Sunday School, 10 a. m.
English service, 11:15.
The Boy Scouts will worship with us.
If you are not connected with any church, make this your church home.

Our Lady of Sorrows Church
Rev. James A. Callahan, Pastor

Sunday masses at 7 a. m., 8:30 a. m. and 11 a. m.
Daily mass at 8:00.

Clarencville M. E. Church
Rev. Robert Richards, Pastor

10:30—Morning worship.
11:30—Sunday School.
7:30—Evening service.

Baptist Church
Rev. E. W. Palmer, Pastor

10:30—Morning worship.
"The Earnest of the Spirit."
11:45—Bible school. Classes for all ages.

7:30—Union service at Methodist Church.
Annual picnic at Island Lake Saturday of this week. We will leave from the church about 9:00 o'clock.

St. Paul's Evangelical Lutheran Church, Clarencville
(At Switzer Road)
Rev. Paul Graubner, Pastor

9:30—Sunday School.
10:15—Confessional service.
10:30—German service with Holy Communion.

St. Martin's Episcopal Mission
Lenore Ave., 3 blocks south of Grand River. Five Points

Morning service, 10:30.
Sunday School, 11:30.

Methodist Church
Dr. H. Addis Leeson, Pastor

The annual Children's Day celebration will be the order on Sunday morning. The hour is 11 o'clock for the combination service of church worship and Children's program. One of the features of the service will be the baptism of small children by the pastor. Any parent is invited to accept this privilege at about 11:30 o'clock. A plan of decoration which won such favorable admiration last year will be undertaken again. Small forest trees are placed throughout the auditorium and the whole church becomes of leafy bower.

In the evening at 7:45, the annual baccalaureate exercises in connection with the commencement program of the city schools. Dr. Leeson has been invited to preach the sermon and the music will be furnished by a joint choir of the three churches led by Mr. Applin. Dr. Leeson's subject will be "Knee Deep In June."

DIVINE PRAISES DEVOTION OF BELL MEN AND WOMEN

The spirit of devotion to duty shown by the men and women of the Bell System throughout the United States recently inspired Dr. B. R. Lacy, Jr., President of the Union Theological Seminary of Richmond, Va., to deliver a sermon at the Central Presbyterian Church in Atlanta, Ga., on the subject of devotion.

Dr. Lacy mentioned as a fine example of devotion the heroism of some of the young women who received Vail Medal awards for remaining at their posts of duty in times of great emergency, and he also referred to the linemen who were called out at Christmas time to repair the lines so that the avenues of communication would remain open.

"Such devotion to the company and to the great public which the company serves," said Dr. Lacy, "should inspire us who are Christians to new loyalty and devotion in the highest spheres of Christian living."

Coming Opportunity
In Illinois they are planting trees in front of billboards to beautify the landscapes. When the trees grow they will make good posts for hot dog signs and political advertisements.—The South Bend Tribune.

So, as to provide continuous voice communication, for pilots with ground headquarters, the Bering System has placed in operation fourteen radio-phon stations on a San Francisco-Chicago airmail and passenger airway.

In 1918, there were but 100,000 Bell system dial telephones in service in the United States. This number had increased to over 4,000,000 at the beginning of 1930.

FARMINGTON-WALLED LAKE BUS OPERATING

Bus service from Walled Lake to Pontiac and Farmington started this week on a definite schedule.

The busses being used are a fine type providing comfortable transportation. The seats are comfortable to ride in and fast service is maintained. Walled Lake has been without bus service for a considerable time.

Frank Capri is owner of the line and is anxious to give this section the best possible service. Every effort will be made by him to give prompt and satisfactory service and every effort is expected by the people of the section to boost the service and aid it in every way so that the patronage will make its continuance worthwhile.

The busses start at the Walled Lake park for both Farmington and Pontiac and stop anywhere to receive and discharge passengers on signal. They are painted a bright orange and are easily distinguishable.

Lull Before the Storm

Milds—Your wife seems to be very cheerful and smiling this evening.

Meeks—Yes, altogether too cheerful and smiling. She's got something on me.—New Bedford Standard.

Send in your news items.

The Finish Depends on the Starter

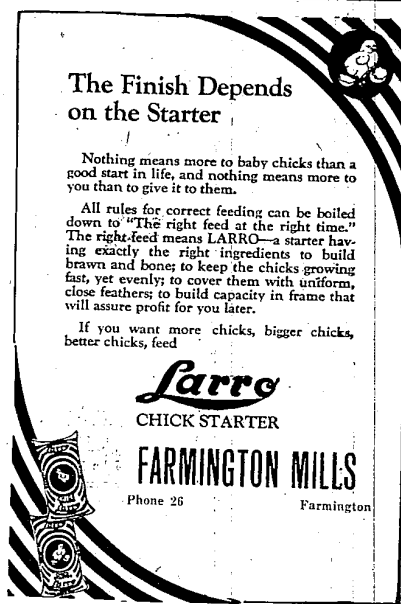
Nothing means more to baby chicks than a good start in life, and nothing means more to you than to give it to them.

All rules for correct feeding can be boiled down to "The right feed at the right time." The right feed means LARRO—a starter having exactly the right ingredients to build brawn and bone; to keep the chicks growing fast, yet evenly; to cover them with uniform close feathers; to build capacity in frame that will assure profit for you later.

If you want more chicks, bigger chicks, better chicks, feed

Larro
CHICK STARTER

FARMINGTON MILLS
Phone 26 Farmington



Fisherman's Supplies

You "old timers" going over your outfits, or beginners just assembling an outfit will find everything you need here at this store. Proven Qualities—Moderate Prices

Tackle Box, \$1.25—Baits, 25c to \$1.25
Casting Rods, \$1.45 to \$6.50
Bamboo Poles, 15c to 25c

Lee Hardware Co.

"THE WINCHESTER STORE" FARMINGTON
PHONE 62

PUBLIX-KUNSKY REDFORD
A PUBLIX GREATER TALKIE THEATRE

Friday-Saturday June 13-14
LUPE VELEZ
in
Hell Harbor
Jean Hersholt
Charley Grapewin "The Red Headed Hussey"

Sunday-Monday-Tuesday June 15-16-17
GEORGE BANCROFT
in
"Ladies Love Brutes"
with Mary Astor—Frederic March
Laurel & Hardy in "Brats"
Jimmy Barry in "The Rube"

Wednesday-Thursday June 18-19
Winnie Lightner—Chester Morris
in
"She Couldn't Say No"
The Gold Digger of Broadway in a new hit
Bert Roach in "Down With Hudson"

PROFESSIONAL SERVICES

Dental and General
X-Ray Service
DR. G. F. WEAVER
Dentist
Farmington State Savings
Bank Bldg.
Phone 170
Office Hours:
9 to 12; 1 to 5 p. m.
Evenings by Appointment.

DR. H. E. BOICE
Physician and Surgeon
Office Phone 307; Res. 132-W
OFFICE HOURS:
2 to 4 p. m.; 7:30 to 8:30 p. m.
Thurs. and Sun. by appointment
Farmington, Mich.

Z. R. ASCHENBRENNER, M. D.
Physician and Surgeon
Office Hours: 2:00 to 4:00 p. m.
Evenings Except Sun. and Wed.
7:30 to 9:00
Office Phone 160-J
Resident Phone 160-M
Farmington, Mich.

Paint the Practical Way
Spraying or Brushing:
Sunbrite Painting Co.
We appreciate small as well as large jobs
214 B Parker
Phone Farm. 320 C. Bates 824-p

Phone Garfield 0102-W or
Farmington Music Shop, Res. 1023
KENNETH F. FOLKINS
Teacher of Piano
(Formerly with Faust Music School)
Piano Lessons 11—olveas at pupil's
home if preferable
(Piano Tuning)
4899 Fernwood Ave. Detroit
Gar. 2398 Res. Hog. 5316
INTERIOR TILE CO.
Tile Walls, Floors, Fireplaces
Colored Tiles a Specialty
4911 Joy Road, near Grand River
Detroit, Mich.



SERVING MANY BUSINESSES
Experience of large fleet owners reveals
the unusual reliability and economy
of the new Ford

A SIGNIFICANT TRIBUTE to the value of the new Ford is found in its increasing use by Federal, state and city governments and by large industrial companies which keep careful day-by-day cost records. In most instances, the Ford has been chosen only after exhaustive tests of every factor that contributes to good performance—speed, power, safety, comfort, low cost of operation and up-keep, reliability and long life.

Prominent among the companies using the Ford are the Associated Companies of the Bell System, Armour and Company, The Borden Company, Continental Baking Corporation, Firestone Tire and Rubber Company, General Electric Company, Goodyear Tire and Rubber Company, Kellogg Company, Knickerbocker Ice Company, Morton Salt Company, Pillsbury Flour Mills Company, The Procter and Gamble Company, and Swift & Company.

Each of these companies uses a large number of Ford cars and trucks. The Associated Companies of the Bell System use more than eight thousand.

Modern business moves at a fast pace and it needs the Ford. Daily, in countless ways and places, it helps to speed the production and delivery of the world's goods and extend the useful service of men and companies.

Constant, steady operation over many thousands of miles emphasizes the advantages of the sound design of the Ford car, its high quality of materials, and

unusual acceptance in manufacturing. Beneath its graceful lines and beautiful colors there is a high degree of mechanical excellence.

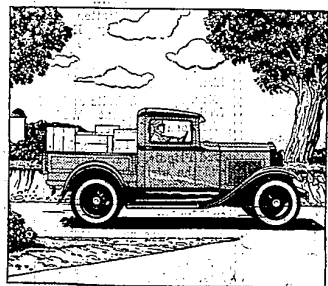
An example of the value built into the Ford is the use of more than twenty ball and roller bearings. They are hidden within the car and you may never see them. Yet they play an important part in satisfactory, economical performance. Their function is similar to the jewels of a fine watch.

Throughout the Ford chassis, a ball or roller bearing is used at every place where it is needed to reduce friction and wear and give smooth, reliable mechanical operation.

At many points, as on the transmission counter-shaft, clutch release, fan and pump shaft, and front drive shaft, these ball and roller bearings are used where less costly types of bearings might be considered adequate.

Additional instances of the high quality built into the Ford are the extensive use of steel forgings, fully enclosed four-wheel brakes, Rustless Steel, four Houdaille double-acting hydraulic shock absorbers, aluminum pistons, chrome silicon alloy valves, torque-tube drive, three-quarter floating rear axle, and the Triplex shatter-proof glass windshield.

The Ford policy has always been to use the best possible material for each part and then, through large production, give it to the public at low cost.



NEW LOW FORD PRICES

Standard Coupe	\$402
Sport Coupe	\$425
De Luxe Coupe	\$545
Tourer Sedan	\$405
Three-window Fordor Sedan	\$600
De Luxe Sedan	\$640
Town Sedan	\$660
Cabriolet	\$625
Runabout	\$435
Patrol	\$440
Pickup Closed Cab	\$425
Model A Coupe	\$345
Model AA Truck Chassis, 121 1/2-inch wheel base	\$510
Model AA Truck Chassis, 107-inch wheel base	\$525
Model AA Panel Delivery	\$780

All prices F. O. B. Detroit, plus freight and delivery. Dumpers and special rates on low cost.

FORD MOTOR COMPANY

