

CHURCHES

St. Paul's Evangelical Lutheran Church, Clarenceville
(At Switzer Road)
Rev. Paul Grainger, Pastor

10:30—English service.
2:00—Sunday School.
2:30—Lutheran Radio Hour over station WXYZ.

St. Martin's Episcopal Mission
Lenore Ave, 3 blocks south of Grand River, Five Points

Morning service, 10:30.
Sunday School, 11:30.

Clarenceville M. E. Church
Rev. Robert Richards, Pastor

Our Lady of Sorrows Church
Rev. James A. Callahan, Pastor

Sunday masses at 8:30 a. m. and 11 a. m.
Daily mass at 8:00.

Baptist Church
Rev. E. W. Palmer, Pastor

10:30—The Boy Scout troops of Farmington and Clarenceville will attend this service in a body. All the friends of the boys are invited to be present. The Pastor will give a junior message on "The Secrets of the Heart Revealed." The sermon subject will be "Four Courageous Young Men."

11:45—Bible School with classes for all.
6:30—Young Peoples Hour.
7:30—Evangelistic service.

Starting with this Sunday night the Pastor will preach a series of sermons on the Prophecies of Daniel. This week's message will be "God's Dealings With the Gentile Nations."

West Point Park Presbyterian Church

10:30—Sunday School. Lloyd Gullen, Supt.
11:30—Morning services. Rev. John Adams.
7:30—Midweek Prayer service.

Evangelical Church
Rev. A. A. Schoss, Pastor

Third Sunday in Advent.
German worship, 10:15.
Subject: "A New Testament Tragedy."

Evening worship, 7:30.
Subject: "The Inner Circle."
This is a communion service to which the entire church is invited.

Sunday School, 11:30.
Classes for all ages.
"Come thou with us and we will do thee good." — Numbers 10:23.

Methodist Church
Rev. F. C. Johnson, Pastor

"Will Your Tent Stand the Storm?" will be the theme of Rev. Johnson's sermon next Sunday morning at 10:30. This is a timely message on our present needs.

In the evening the message will be one looking towards Christmas, "Feeding a Hungry World." The hour is 7:30 p. m. Crowds are increasing every Sunday for both services which is inspiring to all. A Christmas gift class of 25 new members is expected the Sunday morning before Christmas. If you have no church home we invite you to join with us. Baptism will be offered to all who desire it.

Ring Lardner Comedy
Hit To Be In Detroit

Ring Lardner, of course, is known far and wide as a short story writer, and known at least near and narrow as a playwright. But the purpose of these few words is to present Mr. Lardner in still a third capacity—one which reveals him in a new light not only to the public, but to most of his acquaintances as well.

For Ring Lardner is a composer of music. His first tunes to reach the stage are contained in "June Moon," the play of which he is co-author, and which comes to the Cass Theatre, Detroit, Sunday evening, December 21. It is now, to be sure, a musical comedy, but, since it has to do mainly with song-writing folk, it calls for three complete songs and bits and fragments of still others. All of this music has been written by Mr. Lardner.

Not only that, but Mr. Lardner's interest in music seems to

be considerably greater than his pre-occupation with literary matters. He is possessed of a thorough technical knowledge, is a better than average piano player, and a first-class destructive critic of other people's tunes. There were early days, it seems, when the Lardnerian ambition had nothing to do with belles lettres at all, but was directed entirely along musical channels. Just what happened to divert this ambition is not possible to say here, because Mr. Lardner himself is the only person who knows, and it is his outstanding characteristic that he won't tell, no matter what you want to know.

Sam H. Harris is the producer of the play and has provided an able cast which includes Harry Rosenthal, Edith Van Cleve,

Frank Otto, Ruth Abbott, John Daly Murphy, Elaine Temple, Patricia Chapman, Milano Tilden, Ross Hertz, Fred Irving Lewis, Aedline Ogilvie and Thomas Gillen. "June Moon" comes direct from eight months in New York.

"FIRE HAZARD" TAGS ARE PLACED ON AUTOMOBILES

Lansing.—Th success of the "Fire Hazard" tags placed on all automobiles entering the upper peninsula by the Straits of Mackinac last summer and during the periods of intense forest fire danger has assured continuance of this practice next year, according to the Forest Fire Division of the Conservation Department.

Last summer, as an experiment, the Forest Fire Division with the

co-operation of the State Highway Department placed tags on automobiles entering the northern part of the state by way of the state ferries when weather conditions made fire hazards acute. The tags asked caution on the part of the motorist and his passengers and suggested ways of preventing fires.

A noticeable increase in carefulness on the part of motorists resulted from the use of the tags, it was said. The tags were so designed as to serve as souvenirs.

The average employe citizen is worth \$60,000.00" to the State—each year about 25 are killed during the hunting season. \$1,500,000.00 of the State's man-power destroyed annually in this manner alone.

TAKE ROAD "LAB" TESTS

Ann Arbor.—Guarding Michigan's paved highways by insisting upon high standards of material and by developing improved methods of construction for concrete asphalt and gravel roads, culverts, bridges, snow

fense and other structures connected with the highway system, is the valuable work carried on by the Michigan State Highway Laboratory at the University of Michigan, by which 14, 747 laboratory tests of road materials were made during 1929.

FOR
SINCLAIR
SERVICE

Phone 91

Farmington

AUCTION SALE

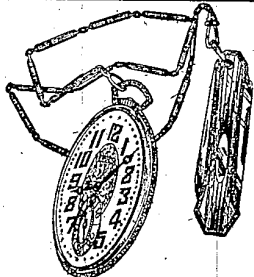
TWICE DAILY UNTIL CHRISTMAS - 2:00 AND 7 P. M.

Elmer Le Tourneau, Jeweler

Must Raise Cash Immediately!

(WE ARE NOT GOING OUT OF BUSINESS)

A wonderful Opportunity to buy CHRISTMAS GIFTS at Astounding Savings!



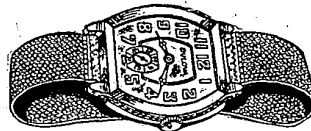
Elgin, Waltham, Hamilton, Illinois Watches



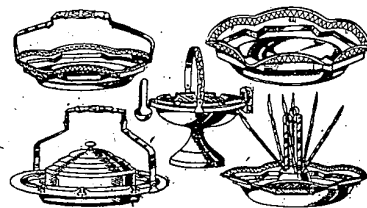
Diamonds, Lavaliers, Rings, Pearls



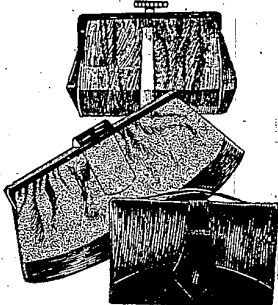
Popular Makes of Ladies' and Men's Wrist Watches



... Silverware ...
Percolator Sets
Fountain Pens ...
...and Pencils...



Silverware Platters, Sugar and Cream Sets, Glassware



Come to this sale and buy at your own price as we must raise money

SALE STARTS SATURDAY, DECEMBER 13, AT 2:00

ELMER Le TOURNEAU, Jeweler

Peoples State Bank Bldg.

Redford, Detroit