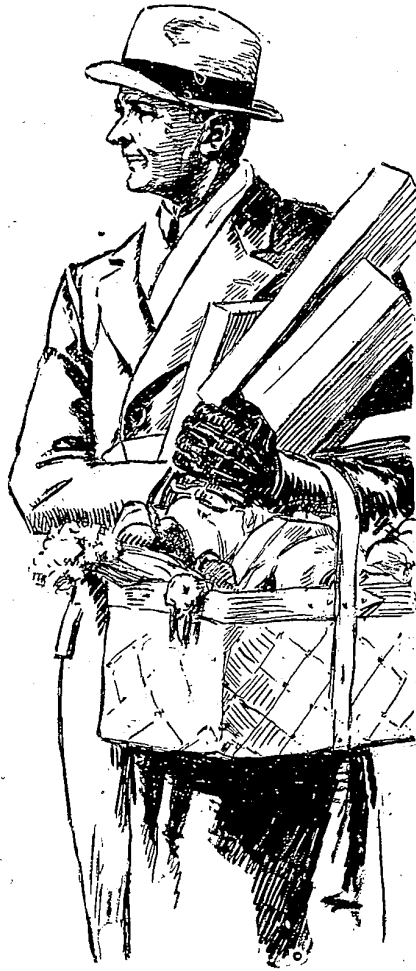


There Is A Santa Claus!

With unemployment figures running high this winter it appears as though the faith of many, many little girls and boys in the jolly Christmas saint will be shaken. Yet you can "pinch-hit" for Santa Claus . . . you can make it as jolly a Christmas of giving as though you carried personally, a basket of toys, clothing and food to the home of every child.

Members of the American Legion and Farmington Exchange Club are engaged in their annual collection of contributions to the Community Christmas Fund. Small and large donations are equally acceptable. All that is asked is that you do your bit to make Christmas a little happier for the other fellow.

Committeemen of the American Legion who are receiving donations are Norman Lee and Charles Lueke. Leo Gildemeister and Spencer Heeney are acting for the Exchange club. If you are not personally solicited by one of these men, get in touch with them yourself. They will be glad to call on you and receive your contribution.



"SPECIAL" TO FARMERS

If you feel that you wish to contribute produce it will be most acceptable to help make up the 50 baskets which must be filled to supply the needy families in this community.

Apples and potatoes are especially needed in the Christmas baskets. These contributions should be delivered to Arthur Lamb by Tuesday noon or if it is impossible for you to deliver them, call 25-J and a truck will call at your farm for them.

A "PRIVATE MESSAGE"

This message is for "private" citizens as distinguished from business men of Farmington.

The Christmas Fund Committee's solicitation each year is confined chiefly to the business section, because of the immense work that would be required to call at every home. But this is a community-wide call, not for business men alone. Particularly this year have demands on business men been heavy. They cannot do it all. Many citizens not in business are equally able to aid in this work. Do YOUR part whether the committee calls on you or not.

Farmington's Community Christmas Fund NEEDS YOU

(This advertisement prepared and published in aid of Farmington's Community Christmas Fund by the Farmington Enterprise)