

## Daily Cut Prices

35c BROMO	24c
QUININE	
25c EX-LAX	16c
FOR	
30c ALKA	24c
SELTZER	
65c BISADOL	39c
FOR	
100 HOBART'S	23c
ASPIRIN TABLETS	
60c SAL	39c
HEPATICA	
\$1.00 IRONIZED	71c
YEAST	

## Farmington Drug Co.

Stanley F. Smith  
PRESCRIPTION DRUGGIST

The first artillery shot was fired by the Navy on the S. S. Mongolia, when the naval armed guard fired on an enemy submarine and presumably sunk her.

## Around The County

Oakland County relief rolls are showing a steady decline in the number of applicants for public aid, according to the statistics compiled by S. S. Skelton, head of the County Emergency Administration. With the removal of 225 cases last week, there are 5,270 families receiving help. In November of last year there were over 10,000 Oakland County families supported wholly or in part by public funds.

Boy Scouts in Oakland County will meet for the Oakland Area Boy Scout Council to be presented at the Region Seven Scout's Seminar which will be conducted October 29 at the auditorium of General Motors Building, Detroit.

Arrangements have been made by Pontiac young people for the leasing of Castle Inn, a former restaurant and beer garden on Telegraph Road, south of Orchard Lake road, to make it a beerless beer garden patterned after a similar organization entitled Youth, Inc., at Ferndale. The movement has the support of luncheon clubs and the Junior Chamber of Commerce.

The fastest runner in the world recently got married. It's no use, boys—Olin Miller in Thomaston (Ga.) Times.

## BEAUTY OF TREES FADES AS CITY PLANS CLEAN-UP

Farmington, with its many trees, has been one of the most beautiful areas in this section of the State at this time of the year. The ideal weather of the past few weeks has made the city the subject of many compliments both from the citizens and from visitors who were attracted by the autumnal effects of the trees.

In contrast to the many hues of the foliage which precede the advent of winter, has been the verdant splendor of Town Hall Park whose late planting has created a scene of spring freshness against a background of faded summer leaves.

In the memory of the older residents, the beauty of the trees and the balminess of the weather has rivaled that of the past five seasons.

All of this beauty could not withstand the past few frosts. Most of the leaves have fallen and now it becomes the problem of Farmington residents to remove them. Realizing the situation which has been created by the decay of the foliage, the City Commission is sponsoring Clean up days Tuesday and Wednesday, November 5 and 6.

City officials urge the cooperation of all residents in the clean up campaign. To facilitate the removal of the rubbish and other waste material which will have been collected, those who participate in the campaign are asked to use containers which can be picked up by the city truck men during the campaign.

## DAMAGE TO DAM MAY PREVENT SKATING RINK

Whether Farmington will have a skating pond this year is doubtful owing to recent computations which have set in at the dam which has been used in the past to flood the area behind the school.

Last year as well as years before a 30-inch crack in the dam was blocked back up the water, causing the water to flood about an acre of land to a depth of two feet. However, this year something has gone wrong with the dam which will prevent the carrying out of the customary procedure when cold weather arrives. Commissioner Hatton who had charge of the skating pond last year states he cannot determine the extent of the damage and, consequently, does not know whether it can be repaired for the purpose of providing the people of Farmington with an ice skating rink again this year.

## FOOTBALL SCHEDULE

October 25—Milford, home  
November 1—Northville, there  
November 8—Walled Lake, there  
November 15—Redford Union\* home.

\*Not league game.

## WANT-AD COLUMN

**WELL HELP YOU FINANCE Your Home!** If you'd like a home of your own, we'll help you build it on a choice site. Plans priced low. All improvements. We'll write the investigation! Write to Box 179, The Farmington Enterprise. 35-1-p

**FOR SALE—Choice building lots in City of Farmington.** We will help you finance a home. For particulars write box 178, Enterprise. 34-1-p

**AUCTION SALE**  
527 Franklin Ave., Plymouth, Mich. Last Tuesday in each month, 12:30. Private Sales daily. Store always loaded. Good used furniture. Terms Cash. Harry C. Robinson, Auctioneer. 43-1-c

**CUSTOM CIDER GRINDING** at Tibbitts Mill at Twelve Mile and Inkster roads. Cider for sale by gallon or barrel. 47-1-c

**AMATEUR FLOOR SHOW** every Wednesday night at Novi Inn. Also Chop Suey, 30c. Come with any talent, cash prizes given. Lots of fun. 52-1-c

**FOR RENT OR SALE—Modern** roomy house with or without acreage, 23609 Gill road. 61-1-c

**WANTED—About five acres non-productive land, ravine or rolling ground. Lowest price and terms. Write to Box 183, Enterprise. 51-2-c**

**WANTED—Light driving harness and buggy. C. L. Reed, Ford Repaire, Farmington. 52-1-c**

**WALNUT GRAND PIANO** for sale cheap. Pay balance due company on easy terms. F. H. Laubach, Walled Lake, Michigan. 52-1-p

**LOST—Bird dog; setter, Detroit license tag. Finder return to sheriff's office. 52-1-p**

**FOR SALE—Ford or Chevrolet** panel body; 131 inch wheelbase; 8 feet 6 inches long; 6 feet 6 inches wide, 4 feet high. Ideal for potatoes or apples. West Point Greenhouse, Phone 128-W. 52-1-p

**MEALS AT ALL TIMES. Special** chicken dinners Saturdays and Sundays. May's Tavern; Inkster road and Eight Mile. 52-1-p

**FOR SALE — Fireplace screen.** Reasonable price, 22815 Brookdale, Phone 380. 52-1-p

## CLEAN-UP DAYS

The City Commission has named Tuesday and Wednesday, November 5 and 6, clean up days. Will residents having cans and rubbish or any waste material kindly place the same where they will be easily accessible to the city truck men. N. H. POWER, City Clerk. 52-2-c

The Bureau of Navigation, in checking the World War files of the Army, Navy, and Marine Corps, found that there were 50,328 Smith's in the Army and 6,819 in the Navy and Marine Corps.

## Calendar of Coming Events

**FRIDAY, October 25**—Meeting of the P. T. A. at West Point Park at the home of Mrs. Albert Owen for a card party.

**FRIDAY, October 25**—Pot luck supper sponsored by the Adult Bible Class of the Clarenceville Church.

**FRIDAY, October 25**—A. M. Wardlaw, secretary of the Central States Cooperative League, speaks at 8 p. m. at the home of R. N. Crozman, 2105 Grand River.

**WEDNESDAY, October 30**—O. E. S. card party, morning and afternoon at the home of Mrs. Henry West, on Oakland avenue.

**WEDNESDAY, October 30**—Exchange Club meets at the Farmington M. E. Church. Luncheon served at 12:15.

**WEDNESDAY, October 30**—Mothers Study Group meeting with Mrs. Mackay on Norborne avenue, Clarenceville.

**THURSDAY, October 31**—Trinity Shrine No. 41 meets at Forester Hall at 8 p. m.

**THURSDAY, October 31**—Oakland County O. E. S. annual session at Royal Oak Masonic Association. Morning session begins at 9:45. The afternoon session begins at 1:30.

The chickenade feeds on the eggs of insects during the winter months. It has been known to eat as many as 450 eggs in a single day.

## Pupils Must Leave Car Keys With Principal

Students in Farmington High School who drive automobiles to school are required to leave the keys to their cars with Principal Burns while school is in session. At dismissal time the keys are returned to the owners.

This arrangement arises from the situation complained of last year by many parents and residents in Farmington. They claimed there was no necessity for the students' driving their automobiles during the brief time allotted for lunch and that there were so many pupils who drove to school that when classes were dismissed at noon the cars created a traffic hazard which not only menaced occupants of the vehicles but pedestrians as well.

Both because of the enlarged enrollment in the school and the increased number of non-resident pupils, there are more automobiles being used by students this year than there were last year, it was pointed out.

## Dr. Joseph W. Norton

OSTEOPATHIC PHYSICIAN and

SURGEON

GENERAL PRACTICE

33200 Grand River Avenue  
Farmington

TELEPHONE 404

**FORD HOTELS**

CHOOSE  
RATES  
\$1.50  
to  
2.50  
SINGLE OR DOUBLE

**Montreal Toronto**  
ROCHESTER BUFFALO SALT LAKE

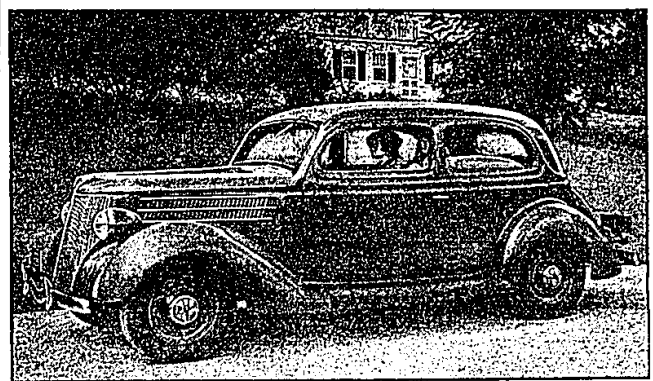
## Eyes Examined Glasses Fitted Dr. Thomas

Farmington, Michigan

Phone:  
Office: 150  
House 354-J.

Office hours:  
9:10 a. m.  
2:4—7:30 p. m.

## Longer Lines in Ford V-8 for 1936

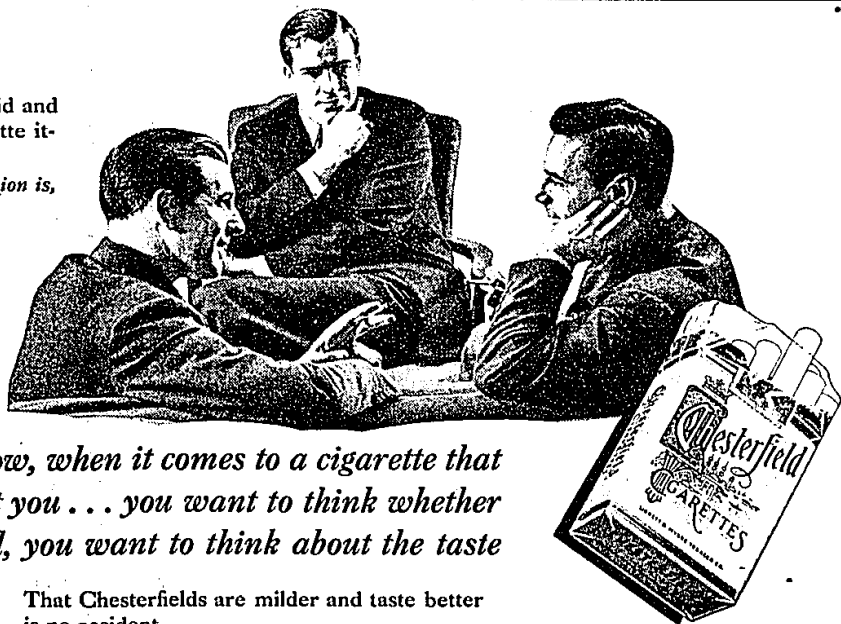


THE LONGER and more graceful lines of the Ford V-8 for 1936 are well illustrated in this view of the popular De Luxe Tudor Sedan. The new longer hood extends gracefully over the attractive new radiator grille. Wide streamlined front fenders, with an imposing flare, shield the tires and house the

horns behind chromium grilles. Now design steel wheels with 15½-inch hub caps are handsome and easy to clean. Bucket-type front seats are exceptionally comfortable. This body type, of welded steel like all Ford V-8 bodies, is also available without do luxe appointments at lower cost.

...but, after all is said and done, it's the cigarette it-self that counts

...the question is, does it suit you?



Now, when it comes to a cigarette that will suit you . . . you want to think whether it's mild, you want to think about the taste

That Chesterfields are milder and taste better is no accident . . .

The farmer who grows the tobacco, the warehouseman who sells it at auction to the highest bidder, every man who knows about leaf tobacco will tell you that it takes mild, ripe tobaccos to make a good cigarette.

In making Chesterfields we use mild ripe home-grown and Turkish tobaccos.

Outstanding  
.. for mildness  
.. for better taste

## CONTROLLED QUALITY BEEF

PROTECT YOUR TABLE

SELECTED! PROTECTED! INSPECTED! Which means the Beef that Kruger brings to you has passed rigid tests—assuring you the finest controlled quality.

Round, Sirloin, Rump  
**Steak Roast 1b. 27c**

6 - 8 lb. average  
**Pork Roast 1b. 23c**  
Picnic Style

**Smoked Hams 1b. 28c**  
Whole or Leg End

## EASY TASK

**SOAP CHIPS**  
5 lb. box **29c**

Beech-Nut Coffee . . .	lb.	27c
Velvet Flour . . .	5 sack	29c
Penn-Rad Motor Oil . .	8 qt.	95c
Good-Luck Oleo . . .	lb.	20c
Palmolive Soap . . .	3 cake	14c
Super Suds . . .	3 pqt.	25c

## SUNBRITE

**CEANSER**  
6 cans **25c**

## WESCO DAIRY FEEDS

16% 100 lb. bag	20% 100 lb. bag	24% 100 lb. bag
\$1.39	\$1.49	\$1.79

**MICHIGAN POTATOES, 100 lb bag \$1.09**  
60 lb. bushel 69c 2 pks. 35c

**CAULIFLOWER, large head . . . . 15c**

**Florida Grapefruit, large . . . 3 for 17c**

**BANANAS . . . . 3 lbs. 15c**

**Cooking and Eating Apples 10 lbs. 25c**

**KROGER STORES**