

3.97 4.97 5.47

**Sale . . . Long-sleeved shirts
perk-up school wardrobes**

2A. Assorted multi-color wallpaper stripes of no-iron polyester-rayon.
2B. Antron® nylon in white, blue, lilac, black, pink. Both in 32 to 38.

**Sale. "Skinny-rib" sweaters
industrial-zipped for school**

2C. Plum, grey, zinnia polyester-acrylic. S, M, L. (Sportswear, d. 900)

**Sale . . . Turtle-
neck sweaters**

4D. Easy-care acrylic rib-knit sweater with a turtle-neck that can be arranged in high or low fashion. Long-sleeved; white, navy, red, black, brown. Machine washable. Sizes S, M, L. (d. 900)

**Sale. Washable
crepe blouses**

Acetate-and-nylon in white, navy, brown, purple, red, gold. **2E.** Six-foot print scarf, long-sleeved style. **2F.** Zip-front long-sleeve tunic. Both in sizes from 32-38. (Sportswear, d. 900)

10.97

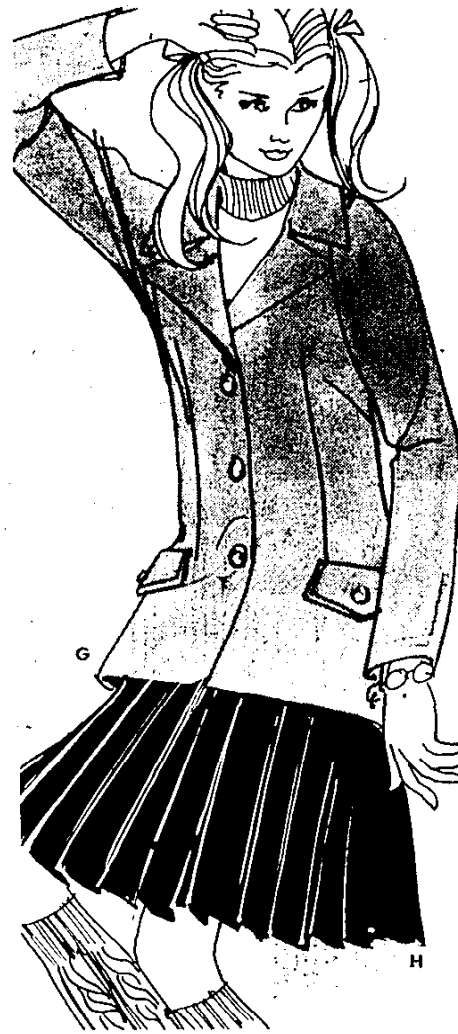
**Sale . . . Right-now styling
in a wool blazer jacket**

2G. The campus in-look is a wool flannel blazer in navy, grey, brown or cranberry; metal buttons. 10-18.

5.97

**Sale . . . Complete "the look"
with a coordinated skirt**

2H. Wool flannel with flirty pleats. Navy, grey, brown or cranberry. 10 to 18. (Active Sportswear, d. 902)



SPORTSWEAR FASHIONS,