

# The Farmington Enterprise

Established 1888 by Edgar R. Bloomer as "A Permanent Journal of Progress"

Published Thursday of each week and entered at the Post Office at Farmington, Oakland County, Michigan, as second-class matter under the Act of March 3, 1879.

Phone: Farmington 25 — Redford 1133

## EDITORIALS

### Safety Pays a Dividend

(Christian Science Monitor)

The extremely low accident rate in Providence, Rhode Island, since the inauguration of a safe-driving campaign on December 1, 1937, has proven amply the worth of such a program. This drive, the backbone of which was strict enforcement of a twenty-five mile-an-hour speed limit, saw the number of fatal automobile accidents in 1938 reduced to sixteen, as compared with forty-one in 1937, and has earned for Providence the highest award of the National Safety Council for a city of more than 250,000 population.

Providence motorists, who in spite of this splendid record have complained of what they term "small-p" driving, may feel happier about it now that the National Bureau of Casualty and Surety Underwriters has announced that this community's title of "safest city" has won for it a sharp reduction of 25 per cent in automobile insurance rates. This added reward, to be enjoyed by all Providence automobile owners who carry insurance, should be a further incentive for shouldering their police department and should encourage motorists in other cities which are attempting to emulate Providence to co-operate with their police departments in their campaigns equally successful.

### Painless Education

(Exchange)

Two letters received recently criticized the public schools, not for failing out on the children, but for giving them an over-abundance of education fodder to chew on during school hours and at home.

The one believes that pupils ought to get all their "learning" during school hours and home work is a sign of inefficiency in the system.

The other agrees with this conclusion and goes further to say that much of the curricula is useless, citing his own case where he "took" a number of subjects that were no use whatever to him in after life.

We have noted on numerous occasions that the public school system is not perfect. It has repeated also that educators are the first to admit it and in consequence are constantly alert to improvements.

This added reward, to be enjoyed by all Providence automobile owners who carry insurance, should be a further incentive for shouldering their police department and should encourage motorists in other cities which are attempting to emulate Providence to co-operate with their police departments in their campaigns equally successful.

## Governor "Opens" Fair



Officially opening the gates of the World's Fair of the West on Treasure Island, Governor Gilbert L. Olson of California uses a \$35,000 key of jewels in a ceremony the first day of the great Exposition on San Francisco Bay. The crowd was jammed against the gate, waiting to get through.

### SAMPLERS USED IN SCHOOLS IN EARLY DAYS

The sampler, a piece of needlework of letters, figures or verse embroidered on a background of heavy linen or canvas, helped teach children of Michigan pioneers arithmetic and developed character. It is reported by a WPA research worker of the Federal Writers' Project.

In early Michigan days few communities had public schools, and mothers taught their young; as best they could. Because sewing samplers requires an accurate count of the thread in the back-

ground material before taking a stitch, children in this way learned arithmetic.

More important, perhaps, was the character development value of the work. Most patterns were intricate. Days, and sometimes weeks were required to finish some samplers. In this way the child learned patience, accuracy and perseverance.

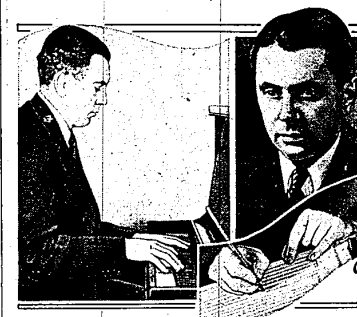
Today the sampler is an important collector's item: a memento of the days when Michigan was young, lusty and eager for growth.

Consciousness of the right-doing brings its own reward; but not amid the smoke of battle is merit seen and appreciated by lookers-on.

## PERSONALITIES IN MUSIC

VERNON DUKE, A.S.C.A.P.

A Dual Personality in Music



By Daniel I. McNamara

WHEN Vladimir Dukelsky, Russian-American composer of symphonies, ballets and other types of music, the larger drama, develops an appetite for caviar, his composita Vernon Duke, popular songwriter, composer of Broadway hits, and form archaeologist, for a while at least, from the nebulous strata of natural science to the broader level of popular conversation.

It was symbolic of this renowned Egyptianologist that he could not content himself to rest on the success he has crowned ten years later with the removal of the objects to the tomb intact to the Cairo Museum. Soon afterward he began laying plans to search for the tomb of Alexander the Great in Asia Minor. Like that same restless ruler, the explorer's work held over him an unquenchable quest for the worlds of the past that are yet unexcavated.

To keep in sight of perfection, and adore it, is the artist's best delight. His biographer, pang, that he can never do more. Then keep her long-for Lovelness in sight. —William Watkinson

Sound travels through the water at a speed of 4,700 feet per second. Through the air the rate is 1,087 feet per second.

## MEN TO EXPECT FURNITURE SHIFTS WITH SPRING

Is the house ready for spring? With the coming of spring almost every homemaker likes to make some changes in her house to herald its arrival.

It is possible with slip covers to change completely the most colorful scheme of a room, suggests Frances Reis, instructor in related arts at Michigan State College. The room can be changed from formal to informal, from dark to light or from severe to more attractive.

Materials should be selected with some definite plan in mind. One can work out attractive combinations of colors, of patterns and of textures in fabrics. If plain materials appear in draperies and a plain rug on the floor, floral patterns or stripes may add a suitable note of variety. Patterned materials must be kept appropriate to the size of a room. The bolder patterns will fit best in larger rooms and smaller patterns will seem to be in scale with small rooms.

"Plain areas" in a room are just as important as decorated areas. Nothing can be so confusing, says Miss Reis, as too many patterns in one room.

The modern slip cover, to look right must be smooth as smooth. And it can't be that way if there is an allowance for shrinkage. So every valuable slip cover should be made from material which has been pre-shrunk. All the rest should be dry cleaned, for if slip covers fit badly—if they bag, droop, wrinkle, ride or pucker, the house will certainly not have that desirable well-groomed appearance.

Another idea to bring the freshness of springtime indoors is to brighten up cupboards and shelves. With sealers, wall paper leftovers and similar things, these cupboards can be changed into gay corners by lining them with an all-over patterned paper. Worn books or worn wastebaskets also can be covered with wall paper scraps.

Group Hospital Plan Accepted by University

Hospital insurance at rates as low as 60 cents a month per person will be made available at the University of Michigan Hospital here under a group hospitalization plan recently announced by University officials.

Effective immediately after the hospitalization plan which has been operating successfully in Cleveland for the past four years, the University Hospital's plan will be a part of a State-wide program under the direction of the Michigan Society for Group Hospitalization and sponsored by the Michigan Hospital Association.

Under the new plan, subscribers will assure themselves of 21 days of ward care a year by the payment of 60 cents a month. Semi-private hospital care will be available to subscribers at a monthly premium of 75 cents. Assurance of ward care for an entire family, including all children between the ages of one and 19 years, will cost \$1.50 a month. Semi-private care for the family basis will cost \$1.90 a month.

The 21 days of care provided under the plan includes bed and board, general nursing service, operating room service, routine clinical laboratory service, and ordinary drugs and dressings. The insurance does not include doctors' or special nurses' services.

Not covered by the new service plan are mental diseases, maternity cases, except when the subscriber has participated in 12 months, diseases not admitted to the participating hospital under law, and injuries or diseases for which hospitalization is available to the subscriber without cost.

## WHY MICHIGAN MIGHT BE CALLED THE BEAVER STATE

The annual open season on beaver, March 15 to April 5 in the lower peninsula and April 1 to April 15 in the upper peninsula, is a testimony to careful conservation which has brought the beaver back in sufficient numbers to allow profitable trapping.

The fur trade, largely in beaver, was the basic industry in Michigan from 1835 when Nicolet first visited the Straits of Michilimackinac. It was a testimony to careful conservation which has brought the beaver back in sufficient numbers to allow profitable trapping.

The fur trade, largely in beaver, was the basic industry in Michigan from 1835 when Nicolet first visited the Straits of Michilimackinac. It was a testimony to careful conservation which has brought the beaver back in sufficient numbers to allow profitable trapping.

The fur trade, largely in beaver, was the basic industry in Michigan from 1835 when Nicolet first visited the Straits of Michilimackinac. It was a testimony to careful conservation which has brought the beaver back in sufficient numbers to allow profitable trapping.

The fur trade, largely in beaver, was the basic industry in Michigan from 1835 when Nicolet first visited the Straits of Michilimackinac. It was a testimony to careful conservation which has brought the beaver back in sufficient numbers to allow profitable trapping.

The fur trade, largely in beaver, was the basic industry in Michigan from 1835 when Nicolet first visited the Straits of Michilimackinac. It was a testimony to careful conservation which has brought the beaver back in sufficient numbers to allow profitable trapping.

The fur trade, largely in beaver, was the basic industry in Michigan from 1835 when Nicolet first visited the Straits of Michilimackinac. It was a testimony to careful conservation which has brought the beaver back in sufficient numbers to allow profitable trapping.

The fur trade, largely in beaver, was the basic industry in Michigan from 1835 when Nicolet first visited the Straits of Michilimackinac. It was a testimony to careful conservation which has brought the beaver back in sufficient numbers to allow profitable trapping.

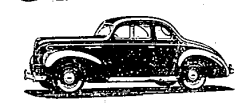
The fur trade, largely in beaver, was the basic industry in Michigan from 1835 when Nicolet first visited the Straits of Michilimackinac. It was a testimony to careful conservation which has brought the beaver back in sufficient numbers to allow profitable trapping.

The fur trade, largely in beaver, was the basic industry in Michigan from 1835 when Nicolet first visited the Straits of Michilimackinac. It was a testimony to careful conservation which has brought the beaver back in sufficient numbers to allow profitable trapping.

sparsely settled regions. In Michigan, the legislature established a closed season in 1911. The taking of all beaver was prohibited from 1925 until 1930. In 1931 the Conservation Commission established an open season. A beaver license today gives the right to take eight beaver in all counties north of town line 16 and west of Saginaw Bay and in Montcalm, Mecosta, Newaygo and Midland counties. All state game refuges, state parks and certain other areas are closed by the commission to trapping at any time.

Less than 10 percent of the total deer range in the upper peninsula is suitable as winter yarding area.

# The ONLY CAR near its price with these quality features FORD V-8

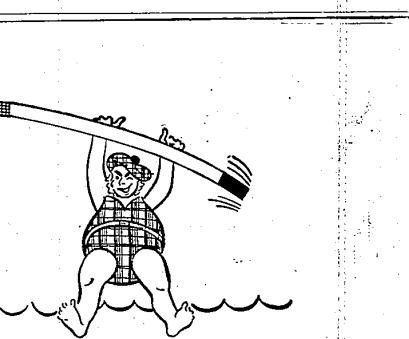


- ONLY CAR with eight cylinders selling for less than \$956.\*
- ONLY CAR with full torque-tube drive selling for less than \$956.\*
- ONLY CAR selling for less than \$889\* in which both front and rear springs are relieved of driving and braking strains.
- ONLY CAR with semi-centrifugal clutch selling for less than \$956.\*
- ONLY CAR with front radius rods selling for less than \$895.\*
- LARGEST hydraulic brake-lining area per pound of car weight in any car selling for less than \$840.\* Largest emergency brake-lining area of any car selling for less than \$840.\*
- LARGER diameter brake drums than in any car selling for less than \$956.\*
- MORE floor-to-roof height than in any other low-price car. WIDEST rear seat of any low-price car.
- HIGHEST horsepower-to-weight ratio of any car selling for less than \$806.\*
- GREATEST fuel economy in miles per gallon of any standard-drive car with more than four cylinders, proved by the Ford "85" in the recent Gilmore-Yosemite Economy Run, as reported in February Motor Age.

Lowest Delivered Price for any car with more than four cylinders FORD "60" V-8 Coupe \$584 Delivered in Detroit, taxes extra

# FORD V-8

Easy to Buy • Easy Terms • Generous Trade-in Allowance



ONE CENT makes a big splash when used to buy electricity! The price of electricity averages down rapidly as use goes up. For example: If you are now using 10 units per month at the regular residence rate, you can buy the second 10 for less than half the price paid for the first 10:

Units per month cost	Rate
10 units per month cost	81c
But the next 10 cost only	36c
If you are now using 30 units per month—	
30 units per month cost	\$2.23
But the next 30 cost only	1.15c
If you are now using 100 units per month—	
100 units per month cost	\$3.33
But the next 100 cost only	2.23

And so it goes. It's worth knowing that you can make free and unstinted use of lighting and appliances and not add much to your bill. Prove this yourself by using all the electricity you need.

THE DETROIT EDISON COMPANY