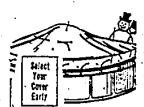


POOL COVERS



THE FULLY GUARANTEED COVER

SIZE	SALE	SIZE	SALE
12'	\$35.00	12'x16'	\$39.95
12'	\$39.95	12'x20'	\$44.95
12'	\$44.95	12'x24'	\$49.95
12'	\$49.95	12'x28'	\$54.95
12'	\$54.95	12'x32'	\$59.95
12'x12'	\$34.95	12'x14'	\$39.95

FREEZE PILLOWS IN STOCK

IN-GROUND COVERS!

ONE-TON WATER BODIES NOW! COVER COMPLETELY AIR-TIGHT

12x24	\$89.95	16'x22	\$119.95
12x28	\$99.95		
20x24	\$149.95		

DOMES



60" OUTSIDE - 50" INSIDE

- Keeps Water Warm!
- Keeps Pool Cleaner!
- No Chilly Breeze!
- See Our Display!

Low, Low Prices!

POOL TABLES



3 1/2" x 1" SLATE!

EQUIPPED AND INSTALLED!

\$349

POOL SALE!



5'x9' RAIL 3/4" UPRIGHT, YEAR ROUND WINTER LINER!

SIZE	WINTER PRICE
15'	\$149.95
18'	\$199.95
24'	\$249.95



7'x11' RAIL 3/4" UPRIGHT, YEAR ROUND WINTER LINER!

SIZE	WINTER PRICE
27'	\$399.95
24'	\$349.95
18'	\$249.95



Coupon

SUN LIQUID CHLORINE

ALWAYS FRESH

29¢

ONE 10.4 "NO LIMIT" 1/2" THICK

PING-PONG TABLES



PLAYBACK ROLLAWAY STYLE

WORLD FAMOUS, DETROITER BRAND! REGULATION FIVE'x9' AUTOMATIC FOLD! NO-CARE TOP! 1/2" THICK

\$29.95

FOLDS EASY STORAGE



VISCOUNT POOLS

LIVONIA: 3600 W. Warren Rd. (at E. Warren) TEL: 481-1111

ANN ARBOR: 2000 E. Grand Ave. (at E. Main) TEL: 965-3833

TRIPLE CROWN: 1000 E. Main St. (at E. Grand) TEL: 965-3833

DETROIT: 1000 E. Main St. (at E. Grand) TEL: 965-3833

Improved Falcons Crush Waterford, 28-6

Fundamentals are a vital part of sports and Coach Hal Beardsley worked his Farmington High football players on them last week.

"We needed to improve," said Beardsley, "after the way we played the week before."

Improve the Falcons did with the result they bumped Waterford, 28-6, to up their season's record of 2-1 and square their Inter-Lakes Conference record at 1-1.

Besides fundamentals, the Falcons also improved on defense.

"We played headup," said Beardsley, and the statistics proved his point.

THE FALCONS picked off four Waterford passes, two by Mike Evelev and one each by Jim Harte and Mark Walsh.

Obviously, it was difficult for Beardsley to single out one back over another. "We ran 15 out there," declared Beardsley, and they combined for 305 yards.

In addition, Tony Wenson, the Farmington quarterback, hit on four of seven passes for 60 yards, one for a touchdown.

Neither team scored in the first quarter. Farmington struck in the second on a Wenson to Dan Felten for 25 yards.

The pass capped a 70 yard drive in which Wenson and

Harte carried for the most part.

THE HALF ended 7-0 for Farmington. Jeff Krause broke away for a pair of touchdowns to fatten the Falcons' lead in the third period.

Farmington gained the ball early in the third stanza on the

Waterford 40 and Krause quickly broke away for 30 and a TD.

Passes from Wenson to Felten for 20 yards and to Harte for 10 set up Krause's second scoring run, this one a nine yard scamper.

Then in the final period, Lee

Rodgett picked up a fumble and raced 40 yards to score. Mark Timmons and Rick Ryan brought Farmington two more points by tackling a Waterford back in the end zone.

Clinton Jones ran six yards for the lone Waterford TD in the last period.

Stevenson No Match For Unbeaten Lathrup

By WYLIE GERDES

Livonia Stevenson's Spartans must have thought they were seeing double all day Saturday.

Bruce Ruhl, who played well enough for two, and Larry and Gary Weinberg led Southfield Lathrup to an easy 28-0 win over the Spartans on the Livonian field.

Ruhl, the tough junior halfback, scored two touchdowns, intercepted a pass, and led the Lathrup ground attack. Larry Weinberg scored the Southfield team's other two touchdowns while Gary led a defense which allowed Stevenson only total of 97 yards last offense.

WEINBERG and Ruhl tore

gapping holes in the Stevenson defensive line which allowed Lathrup to control the ball through most of the game.

Lathrup's first score came midway in the first quarter after Dave Schultz and Ruhl covered a Stevenson fumble at midfield. Ruhl ripped off 15 yards on a crossing run which

Lathrup used effectively all afternoon.

Quarterback Barry Brodsky kept Lathrup on the ground the remaining yards until Larry Weinberg scored with two minutes left in the first quarter.

Another Stevenson mistake, this time an interception, led to Lathrup's second score.

Scott Boyd tipped Stevenson Quarterback Dale Haberman's pass into the hands of Gary Weinberg at the Stevenson 43. A penalty for grabbing the face mask put the ball on the 27. Six plays later, Larry Weinberg walked across for a 14-0 Lathrup lead.

Ruhl got Lathrup's third touchdown after a 71 yard drive. Lathrup got the ball on a punt after Scott Boyd broke up a Haberman pass to Finn. Neil Bowley punted to the Southfield 29.

On the first play of the drive, Stevenson stopped Ruhl for one of the few times during the game. Chris Centers and Mark Warring broke through and dropped the 6'2", 185 pounder for a three yard loss.

Brodsky, however, came back with a six yard strike to Brian Courtney and Larry Weinberg gained 10 more yards.

taking a big loss, Haberman attempted another throw but overhauled his receiver.

After Ruhl's interception, Lathrup marched to the Stevenson 23 with an option to Weinberg the long gainer.

Bob Blatz, however, stopped that threat when he wrestled the ball away from Marty Kaufman after Brodsky threw a strike to the end zone.

Stevenson's biggest chance came just after the second half kickoff. Mike Taylor returned the kick to the 35. Haberman hit end Finn for 21 yards. After Taylor gained three yards, Haberman fired another aerial for Finn.

The Spartan end tipped the ball into the air in a knot of Lathrup defenders, gathered in the rebound and took it to the five yard line.

The Southfield defenders, however, stopped workhorse Blatz on two shots and Haberman's pass to Finn on fourth down failed.

From inside their own 10 Lathrup drove to midfield before losing possession. The running of Jeff Golibek, Larry Weinberg and Ruhl steadily moved the ball to the 47 before Lathrup ran into trouble.

Brodsky's option pitch to one of his trailing backs was

Lumber

AND BUILDING SUPPLIES AT SAVINGS!

WOOD WINDOWS - Double Hung or Sliders

We stock the following sizes to help you get started without delay.

Double Hung	SPEC. PRICE	Sliders
24x24	24x24	16x32
32x24	24x32	24x32
32x16	Reg. 29.65	24x28
36x24	\$25.95	20x32
GLASS	SAVE 10% ON OTHER SIZES	GLASS

INTERIOR FLUSH DOORS

Size	Mat.	Br.
1 1/8	6.19	8.09
1 3/8	6.19	8.09
2 0	6.19	8.79
2 4	6.59	9.59
2 6	6.59	9.59
2 8	7.19	10.25
3 0	7.49	10.95

BIRCH OR MAHOGANY all Doors 1 3/8" Thick 6'8" High

BI-FOLD DOORS

SIZE	LAUAN	BIRCH	LOUVE
2'0"	11.15	12.95	19.95
2'6"	11.95	13.95	20.65
3'0"	12.95	16.25	21.95
4'0"	20.25	23.95	35.55
5'0"	22.15	26.75	37.95
6'0"	22.95	29.95	40.25



BIRCH-LAUAN - 1 1/4" Thick LOUVE 1 1/4" - All 6'8" High

Interior Movable

White Pine Shutters	SAVE 10% on any size
Hardware to hang 4 shutters per set - \$8.00	

2'x4" 8' 69¢

PLYWOOD GOOD 1 SIDE

Colony		UNDER LAYMENT			SAVE 10%
The new Gold Bond ceiling tile design that brings a Spanish swirling elegance into your home...		Save on Quantity Price			
	Gold Bond	4x8	PIECE 25 up		
		1/4"	2.89 2.79		
		3/8"	2.99 2.89		

DRY-WALL

4x7	1 1/2"	1.79
4x8	1.69	1.89
4x10	2.69	2.89

PARTICLE BOARD UNDER LAYMENT

Save on Quantity Price

4x8	PIECE	25 up
1/4"	2.89	2.79
3/4"	2.99	2.89
1/2"	3.09	2.99
3/8"	3.49	3.39
3/4"	5.69	5.59

HARDBOARD

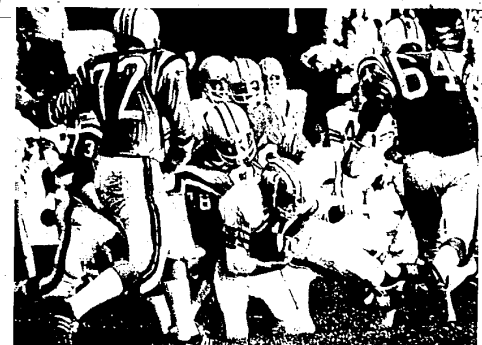
1/4" 4x8 Std.	1.89
1/4" 4x8 Temp.	2.89

PEGBOARD

1/4" 4x8 Std.	\$2.39
1/4" 4x8 Temp.	\$3.29

WHITE PINE SHELVING

1"x12"	19¢
--------	-----



FRUSTRATING AFTERNOON for Livonia Bentley when it tangled with Dearborn High in a Suburban Eight game. Livonia's Brian Gates is smothered by Dearborn linemen on a center thrust. That was the story all day as the teams fought to a scoreless tie. (Photo by Nick Merrick)

Bentley Defense Checks Dearborn

What does a coach say after his team plays a scoreless tie the way Bentley did against Dearborn?

On the one side—the defense—you sing the praises of your team's play.

Coach Glen Goode, of Bentley, did. Bentley held Dearborn to less than 100 yards rushing and seven in the air.

Ron Reardon, Pete Gade, Bob Couch, Tony Romano and sophomore Bob Wasiluk all sparked for Bentley when Dearborn had the ball.

THE CLOSEST Dearborn could come was the Bentley 20. Dearborn tried three field goals and missed each.

Bentley generated a more potent offense than its rival, but couldn't cash in—once four, and a second time Bentley reached the Dearborn Bentley got the Dearborn 15.

"We're just hurting on offense," said Goode. "I don't want this to sound as an alibi, but the facts are facts."

Junior Norm Stalzer led the Bentley attack which mustered 147 yards rushing and 47 in the air. Stalzer personally gained 55 yards in 11 carries.

Bentley now has lost and tied in Suburban Eight League play.

Prep Schedule

FRIDAY

Farmington Harrison at Alpena, 8 p.m.

Thurston at John Glenn, 8 p.m.

Clarencville at Milford, 8 p.m.

Trenton at Bentley, 7:30 p.m.

Churchill at Northville, 8 p.m.

Royal Oak Kimball at Southfield, 8 p.m.

Walled Lake Central at Southfield Lathrup, 8 p.m.

Warren at Garden City East, 8 p.m.

Garden City West at Southgate Schafer, 8 p.m.

Dearborn Edsel Ford at Redford Union, 8 p.m.

Plymouth at Belleville, 8 p.m.

Oak Park at Birmingham Groves, 8 p.m.

SATURDAY

DeLaSalle vs. Brother Rice at Birmingham Seaholm, 8 p.m.

Livonia Stevenson at Farmington, 2 p.m.

North Farmington at Franklin, 2 p.m.

St. Agatha vs. Mt. Carmel at Hilbert Junior High, 7:30 p.m.

Bentley High's girl swimmers dunked Plymouth, 60-37, in their opening dual meet of the fall season. The Bulldog lassies took six firsts, six seconds and four thirds.

Plymouth won both relays and two individual events, both by Jeannie LeClair. She took the 50 Butterfly and the 100 individual medley.

Bentley's lone double winner was Linda Gravila who captured the 50 and 100 backstroke events.

"Where LUMBER is STILL the BOSS!"

REDFORD CASHWAY LUMBER

SAME LOW PRICE

ROYAL OAK 548-2153 803 SOUTH MAIN Corner of Livonia

LIVONIA 261-3110 11970 FARMINGTON ROAD Between Spiceland & Plymouth

WARREN 775-7000 24620 SCHORNHECK ROAD 2nd South of 12th Ave.

CASH OR CARD

Master Charge