

...Exit Do's and Don'ts

bid for attention with the new chrome and crystal look in accessories. It continues to be transitional and it's not unusual for traditional accessories to be used to modify the severeness of the contemporary look, decorators say after viewing the Chicago exhibits.

MORE AND MORE graphic prints are being used as wall decor in contemporary settings and the reasonable price tag makes this colorful art form even more appealing, the designers point out.

The traditional or Early American look continues to dominate and has been invaded by the Oriental influence.

Probably the biggest news for traditionalists, however, is the fantastic job the furniture industry is doing with reproductions, one designer said.

"**YOU HAVE** to inspect them closely to tell them from the original," confessed one buyer after viewing several at the Chicago show. "And I'm an antique collector."

Mediterranean was barely seen at the giant exposition. Reasons for the decline seems to be that most

homes today can't accommodate the massive pieces.

Background colors will be considerably darker with no one color designated as "it." Dark wall colors are shown everywhere and --not too surprisingly-- fabrics for walls were previewed.

SOME OF THE most interesting groups are those where the wall coverings and one, possibly two, pieces of furniture plus the draperies all matched.

For some unknown reason, last year's popular cut velvet will be used less in upholstered pieces, designers learned. The switch is to chamois and velour.

Decorators will also be bidding a fond "adieu" to another time-honored fashion favorite--quilted chintz. It was so easy to work with, but it just wasn't durable enough, explained one decorator. In its place have come the tapestries and the excellent-wearing crewel patterns.

Overall, decorators say that "mix" is indeed the decorating message for 1972--or as the popular phrase of the day goes: "Do your own thing."



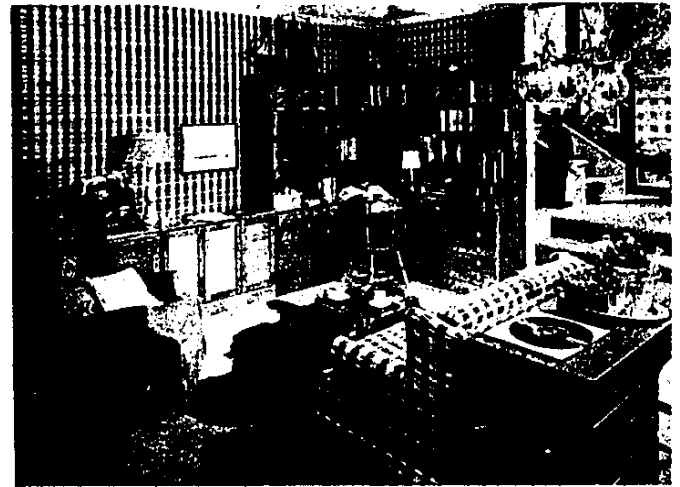
EXCELLENT EXAMPLE OF ORIENTAL influence on the home furnishing scene. Focal point--and conversation piece--is the attractive ginger jar while off at the right the Oriental touch can be seen in the chest and lamp. The crewel-type fabric on the chair is also used in draperies. This is a smart way to coordinate a room setting, Observerland decorators point out.

Now!

WINTER SALE SAVINGS

on Ethan Allen

CUSTOM ROOM PLAN FURNITURE



Handsome, versatile switch-about base units and tops create a great built-in look, working wonders for every room in the house! See our variety of pieces on sale in Antiqued Pine, Heirloom Nutmeg, and painted finishes. Pictured is a family entertainment center, featuring TV and Hi-Fi cabinets -- plus loads of shelf and storage space!

Base Units sale priced from \$89.50 Upper Units sale priced from \$62.95

52" Two-cushion Loveseat, reg. from \$234.50 SALE from \$199.50

Wing Recliner Rocker, reg. from \$209.50 SALE from \$179.50

Open Monday through Friday 10 a.m. to 9 p.m. Saturday to 5:30 p.m.
Sunday 1 p.m. to 5:30 p.m. -- For Browning Only



the Hearthside

Michigan's Largest Ethan Allen Dealer
with two great stores to serve you!

LIVONIA
15700 MIDDLEBELT
Just North of Five Mile Road
PHONE 422-8770

UTICA
50170 VAN DYKE
Between 22 and 23 Mile Roads
PHONE 739-6100