

## FLEET WING GASOLINE

FLEETOIL

KEROSENE OIL

IMMEDIATE DELIVERY

EBERLE and VAN EVERY SERVICE

Red Indian Oil Co. — DISTRIBUTORS — Fleet-Wing Products  
31233 GRAND RIVER at ORCHARD LAKETry Our  
Daily Specials

A WIDE VARIETY TO CHOOSE FROM

Full Course Dinners or Short Orders

## The Buffet Chop House

23621 Farmington Road



Is that Rain Coat,  
and Jacket Cleaned  
for Spring wear?  
Scientific Cleaning  
Methods

Pick-up — Delivery

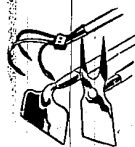
## Farmington Cleaners

33208 Grand River

Telephone 0329



Sickles, shovels and other  
tools all sturdily constructed.  
Forged from heat  
treated, high carbon steel  
and hardwood handles.



It's time for all America  
to put on its diggin' duds  
and start planting. All  
the seeds, tools, plants and  
other equipment you need  
are right here in our  
Garden Shop. Make us  
your first stop today.

**Jahn's LIVONIA HARDWARE  
and LUMBER COMPANY**

FARMINGTON ROAD at FIVE MILE

LIVONIA 3140

## GOVERNOR ENDORSES EASTER SEAL SALE

STATE OF MICHIGAN — EXECUTIVE OFFICE, LANSING

It is with much pleasure to endorse the thirteenth Annual Easter Seal Sale now under way, and conducted by the Michigan Society for Crippled Children and Disabled Adults, Inc. This splendid organization, together with the National Society with which it is affiliated, is this year celebrating its twenty-fifth anniversary, a quarter of a century of devotion and unstinting service to boys and girls with physical handicaps as well as to those privileged to serve them.

The Michigan Society has not only pioneered the work, but is largely responsible for state public programs of physical treatment, hospitalization, special education, and vocational training, which has meant the restoring of thousands of our less fortunate citizens to normal living.

The Michigan Society has demonstrated through past performances that it is indeed a mighty bulwark and champion of the cause, and it is always ready to engage in projects, as the need presents itself, that will alleviate physical want and suffering. Its slogan, "half off to the past and half off to the future", for the 1946 Easter Seal Sale is well taken.

During the past few weeks the Society has engaged itself in two new and important projects — one is providing occupational therapy and the craft work for cripples confined to their homes, the other, through financial assistance and otherwise, establishing nine rheumatic Fever Control Centers and Clinics to cover the entire state of Michigan. This disease is one of the major health problems of present times. It kills five times as many children as Infantile Paralysis and cripples many more.

I wish to commend the work of this Society in connection with the problems of the cerebral palsied child, for whom there are no adequate provisions, but, who through special training services and facilities can enjoy some of the blessings and privileges of their less fortunate brothers and sisters.

Easter is a particularly appropriate season in which to dedicate ourselves to those whose lives may be blighted if help fails to arrive in time. 'Tis the least of these is an ideal that still has significance for all of us and carries with it an admonition that the Michigan Society will not let us forget.

The lay interest and support represented in the Michigan Society is most important. All citizens of Michigan may well be proud that such a fine humanitarian program is being carried on so ably within our state.

As Governor of Michigan I share that pride and urge increased support through this 1946 Easter Seal Sale so that the good work may go forward.

Sincerely,  
(Signed)

HARRY F. KELLY, Governor.

Sincerely  
Yours

Letters submitted to the Editor  
for publication must be signed.  
Opinions expressed in this column  
are those of the writer and do  
not necessarily represent the  
policy of this newspaper.

To The Editor:

One of the issues that became evident in this school board and citizen controversy is the fact that citizens expect an accounting from the school board for any of its actions? Or, has the citizen a right to ask a question and expect an answer? According to the school board's attorney the school board is supreme in its actions. It is in fact that we elected the school board to perform certain duties, but they should conduct these duties in a fair and open manner. It is also clear that the school board is operating under the theory that, when they are elected the citizens turn over to them the title of ownership to the schools and school properties of the entire district.

Nothing of the kind. It is logical to believe that the school board is responsible and accountable to the citizens of the district at all times. The voice of the people is still and always will be the limiting factor in any case.

This is a personal challenge to every citizen in this school district. Do we sit back and watch

our school board perform in this manner?

Will we permit the three men who control the school board to undermine the very fundamentals of our democracy? Are we going to permit these three men to ruin the educational standards of our school district?

It is a fact that this changing of school personnel is taken as a very bad influence on the school children, and is looked upon with much disfavor by the heads of the educational system at Lansing.

Our educational ratings is reduced by these continual upheavals carried on by the school board members. It is up to every individual citizen to rise in protest to such actions. We must attend all the school board meetings which are held every second Monday of the month at 8:00 p.m. in the offices of the school superintendent, and learn for ourselves, first hand, what goes on in our school district. How is the school planning carried on? What steps are taken for the future?

I repeat, it is a challenge — indeed — to every freedom loving citizen.

Samuel H. Kosmetsky.

March 29 1946

To The Editor:

It is not too soon to begin thinking about our school election in July.

Our schools will be no better than the school board that governs it.

The school board members are important in deciding what kind of a school we have — whether or not we will have good educational practices, good environment and adequate housing for our children.

Let's find out about their views before they are elected. It is so much harder to get results when the wrong people have been elected.

It does not mean we are "for" or "against" an individual but it does mean that we will support or work for people who have the welfare of children and youth at heart and who believe that a public office is a public trust.

This is our "civic responsibility" as members of the Parent-Teacher Association.

Sincerely yours,  
Ora Joy.

Synthetic Cloth

One hundred per cent skim milk fiber looks and feels very much like wool. It can be made into cloth for draperies, dresses or even dish cloths.

A bag of peanuts can become a dress or a suit, too. If you know the process recently discovered by scientists in Great Britain and the United States. They are experimenting with peanut protein, which produces a synthetic fiber similar to wool, and can be mixed with other fibers to make fabrics. And British scientists have already produced from seaweed a cloth which has the appearance of nylon.

PATRONIZE THE ADVERTISERS

## WALT YOUNG'S

Original Ign. Replacement Parts for All G.M.

and Chrysler Built Cars.

GENERATOR and DISTRIBUTOR SERVICE

SUNOCO DYNA FUEL VEEDOL OIL

SEVEN MILE at DEERING ROAD

(Angling Road)

OPA Official Answers  
Lumber Dealers Charges

Answering charges made by the National Lumber Dealers' Association in advertisements in many Michigan newspapers, Lawrence L. Farrell, Acting District Director of the Michigan District Office of Price Administration, today asserted that none of the association's charges are backed by facts.

"Charge 1 made by the lumber dealers is that OPA price formulas make it more profitable to export lumber than to keep it for domestic use."

"The fact is that only 1.36 per cent of lumber production was exported during 1945, whereas IM-PORTS during the first nine months of 1945 were 3.57 percent of U. S. lumber production during that period. Export items are under price control which, in general allow only the additional costs incurred in exporting," he declared.

"Charge 2 of the lumber dealers is that OPA price formulas are keeping thousands of small mills out of production."

"The fact is, according to the quarterly reports of the Forest Service on 'Factors Affecting Lumber Production', that labor shortages comprise 65 percent of all obstacles, equipment shortages 10 percent, weather 20 percent and the cost-price relationship only 5 percent of all difficulties," he added.

"During the World War I period of 1917-1920, lumber production had the remarkable encouragement of a 231 percent price increase, but in spite of this, production dropped 13.6 percent. During the present period, under price control the production drop has been only 2.5 percent."

"Charge 3 is that OPA enforcement policies have allowed the creation of a large black market," he continued.

YOU CAN BE WORTH  
MONEY OVER NIGHT

The quickest way of building an estate is through Life Insurance. Why not give your family the benefit of this protection? Let us tell you of its many advantages.

## HUGH BRENNAN

23215 Power

FARMINGTON

RES.

0071-W

representing

BUS.

CH-4000

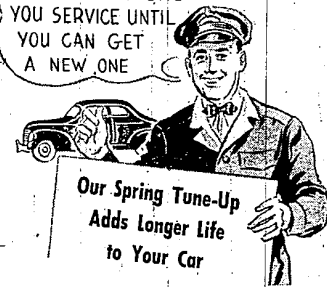
AETNA LIFE INSURANCE COMPANY  
Hartford, Conn.

"The fact is that OPA enforcement policies are stamping out the black market. Most of the sponsors of the advertisement know from recent actions taken against them that over-calling lumber prices result in effective action by the enforcement division of this supply pertinent data promptly."

OPA district.  
"Charge 4 is that OPA's slowness in adjusting prices has prevented mills from securing manpower."

"The fact is that delays occurred because of industry's failure to supply pertinent data promptly."

YOUR CAR MUST  
CONTINUE TO GIVE  
YOU SERVICE UNTIL  
YOU CAN GET  
A NEW ONE

MEMBERS  
UNITED MOTORS SERVICE  
DEALERS

## Fairley Auto Electric

Farmington Phone 2349  
GRAND RIVER Near MIDDLEBELT

## CIVIC theatre

FARMINGTON

Friday - Saturday, April 5 - 6

SATURDAY, MATINEE

NUTTY...as a... FRUIT CAKE!

Fred MacMURRAY

MURDER HE SAYS

The DALTONS Ride Again

Also Color Cartoon

Wednesday - Thursday, April 10 - 11

"DANGEROUS PARTNERS"

JAMES CRAIG and SIGNE HASSO

"BROADWAY RHYTHM"

GEORGE MURPHY and GINNY SIMMS

— CARTOON —

Free Dish Night

## VAN'S GARDENS

36075 SEVEN MILE

Between Farmington and Newburg Roads

Phone Northville 915W2

All Kinds Of

PERENNIALS - ANNUALS - POTTED PLANTS

Specialties

HYBRID DELPHINIUMS

PANSIES

GERANIUMS

Specialties

Russet Seed and Eating Potatoes

Premium Strawberry — Red Raspberry Plants

WHOLESALE - - - RETAIL

Open Daily Until 9 p. m.

