

## Farmers Attention!

### GROUND LIMESTONE FERTILIZER

GET YOUR ORDER IN NOW...  
For Present or Future Delivery

at  
Present Low Rates

**E. S. MATHER**

— PHONE FARMINGTON 1599 —

# MORE

## Farmers plant

# DeKalb

## than any

# other Hybrid

ORDER YOUR DEKALBS TODAY FROM

MELVIN FIEBELKORN, Oxford, Mich.  
FRED HILDEBRANT, Royal Oak, Mich.  
HOWARD MUSOLF, South Lyon, Mich.

## SEE - FOR - YOURSELF!

HERE ARE A COUPLE OF REAL  
MACHINERY BARGAINS!

SEE THEM TODAY

### "Pathfinder"

#### POWER LAWMOWERS

- \* Latest Model
- \* Knives Mounted in 20" Round Disc

Will Cut at Any Height

Suitable for . . .

Golf Link Greens or Rough Cut

### "Bob-Cat"

#### POWER CULTIVATORS

- \* 1½ H. P. Motor
- \* Adjustable Points

Suitable for . . .

Light or Heavy Work

## FARM SERVICE SUPPLIES

High-Performance Poultry and Live Stock Feeds

PHONE 0639

COR. ORCHARD LAKE AND 12 MILE ROADS  
FARMINGTON, MICHIGAN

## Deadline Set For Crop Insurance

Only three more weeks are left in which winter wheat growers may apply for Federal Crop Insurance on their 1947 crop, according to Walter H. Cook, chairman of the Oakland County AAA Committee.

September 14th will be the last day for purchasing this protection against the ruinous effects of crop losses. Hurricane, flood, hail, winter-kill, insects and plant diseases are among the hazards covered by a crop insurance contract.

Crop insurance on winter wheat is sold under a 3-year contract which will cover the 1947-49 crops. It may be purchased through the county AAA office or other authorized agents.

Operated by the Federal Government, the crop insurance program is on a strictly non-profit basis. All premiums paid in are used in paying indemnities to farmers. Administrative costs are paid by the Government.

"No matter how much winter wheat you plant or how good the price is, crop insurance is the only sure guarantee on your crop investment," said Mr. Cook. "It's good business to protect your investment against natural hazards that can destroy your crop in minutes."

## New Disease Forces Close Of Poultry Shows

Because of a new, fast spreading poultry disease found in Michigan, known as the "Newcastle Disease," Charles Pigy, director of the State Department of Agriculture, has issued a notice to fair secretaries and managers sponsoring poultry shows to cancel all poultry exhibits and shows for the balance of 1946. This action was approved by the Michigan Association of Poultry Shows, the President of the Michigan Association of Fairs, and the Veterinary Division of the State Department of Agriculture.

The disease was first specifically diagnosed in England in 1927 but has since been found in several other countries including the United States. Chickens of all ages and birds of some other species may be attacked. The incubation period varies from 3 to 11 days and in some cases longer. The average is generally placed at 5 days. The onset of the disease is usually sudden and its spread in the flock is generally rapid. In rare instances, death may occur without symptoms being observed. A very high death rate (50-100 percent) has been reported from foreign countries but in the United States the death rate has been low, 20 percent or less in most outbreaks.

The diagnosis of Newcastle Disease presents considerable difficulty owing to its clinical resemblance to other poultry diseases. Vaccination against the disease is still in the experimental stage of development but a limited commercial production of vaccine was begun in 1945.

Director Pigy believes that the cancellation of all poultry exhibits at fairs and all poultry shows will aid materially in helping to control the disease.

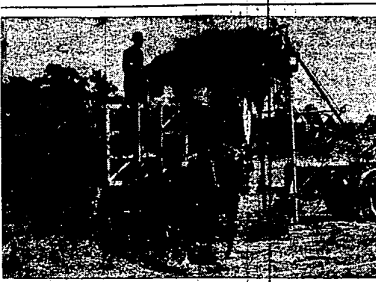
Saccharin sweetener has long been used as a sweetener for diabetics since their bodies have certain difficulties in using sugar. Its use by others has never been extensive in the United States. In fact, since it contains no caloric value, its use in commercial products is controlled by certain regulations set up by the U.S. Food and Drug Laws. In addition to this limitation, the use of saccharin has not been widespread because an unpleasant flavor so often develops.

## HELPS CONDITION!



**Larro DOG FOOD**  
MADE BY GENERAL MILLS

## Better Pastures Mean Bigger Yields Of High Quality Feed at Lower Cost



More and better hay per acre results from the use of plenty of plant food.

## COUNTY TO SEND DELEGATES TO STATE 4-H SHOW

Oakland County will send a large number of entries to the State 4-H Club Show at Michigan State College, East Lansing, on Tuesday and Wednesday, September 3 and 4. Lyn Lewis, district 4-H Club agent announced today.

The first post-war show has a premium list of more than \$18,000 in cash provided through the office of the state commissioner of agriculture, Charles L. Pigy, from legislative appropriations.

A. G. Kettunen, state club leader and manager of the show, reveals that more of the livestock will be exhibited under tents this year owing to the crowded facilities of the campus and the big construction program underway.

Judging and demonstration contests will take place both days. All exhibits must be in place on Monday, September 2, as judging will begin at 9 a.m. Tuesday. Exhibits will remain in place until 5 p.m. Wednesday.

The night program will be held in the college auditorium on Tuesday at 7:30 p.m. and will feature the dress review.

With Tuesday, September 3, scheduled as Farmers' Day a large number of parents and leaders of 4-H club youth from Michigan are expected to come to Lansing for the thirty-first holding of the state show.

## Supplement Pastures for High Milk Yields

Drying pastures during July and August caused "dossy" to make a smaller contribution to the greatly demanded milk supply, and such a decrease may continue until early winter, according to A. C. Baltzer, extension dairy specialist at Michigan State college.

Michigan's milk production during the first six months of the year will near last year's record production. With the demand still strong and the price holding high, Baltzer believes the dairy farmer can do a few things to keep his production up despite his loss of pasture.

The dairy specialist thinks the successful dairyman will supplement his dried-up pasture with roughages. He will feed silage of any type, preferably grass silage if available. Ten to 15 pounds of silage daily, supplemented with grain and an increase of protein concentrate, will maintain milk production, Baltzer proposes. A mixture of five pounds of oats, four pounds of ground corn and one pound of concentrate makes a good mixture of feed. He believes the animal should be sure plenty of water is easily accessible and also provide mineral supplements, especially salt and steamed bonemeal.

Removal of the poorest producing cows, especially those not in calf and long distance away from freshening, will tend to conserve feed and permit feed to be used for best producers, Baltzer declared.

## COUNTY AGENT RELEASES FRUIT SPRAY LETTER

GRAPES: Spray for 2nd brood Berry Moth by August 21. Use 3 lbs. of 14 percent Fixed Nicotine plus ½ lb. rosin fish oil soap or any good spreader (mfg. directions) per 100 gal. If Black Rot present (not likely in well sprayed vineyards) — add proprietary copper (mfg. directions) to either sprays.

PEACHES and PLUMS: Apply 4-6 lbs. Wettable Sulfur per 100 gal. each week, or with each rain for Brown Rot.

Cover crops should be seeded. Apply 200 - 300 lbs. of 3-12-12 or similar fertilizer, then seed 1½ bu. Rye, or 2 bu. Speltz, or 12 lbs. Domestic Ryegrass per acre in grapes, peaches, etc. You may prefer 2 bu. oats per acre for berries.

APPLES may need more Codling Moth sprays if wormy apples are frequent, or if hot weather returns. More scab is unlikely unless 2 days and nights of steady rain.

## John A. Lutz Elected To Dairy Association

The unanimous election of John A. Lutz of Farmington to membership in the Ayreshire Breeder's Association has been announced by National Secretary C. T. Conklin of Brandon, Vt. The ancestors of Mr. Lutz's herd of dairy cows trace back to the heather-covered hills of County Ayr, Scotland, from which the breed derives its name. There are now more than 20,000 herds of Ayreshires in the United States.

**FLEET WING GASOLINE**

FLEETOIL  
KEROSENE OIL  
IMMEDIATE DELIVERY

**EBERLE and VAN EVERY SERVICE**  
Red Indian Oil Co. — DISTRIBUTORS — Fleet-Wing Products  
3123 GRAND RIVER at ORCHARD LAKE

## CHECK THESE PAINT BARGAINS

Outside White  
Outside Cream  
Outside Ivory

**\$3.20 to \$3.45**  
gal.

FLAT WALL PAINT  
white and colors

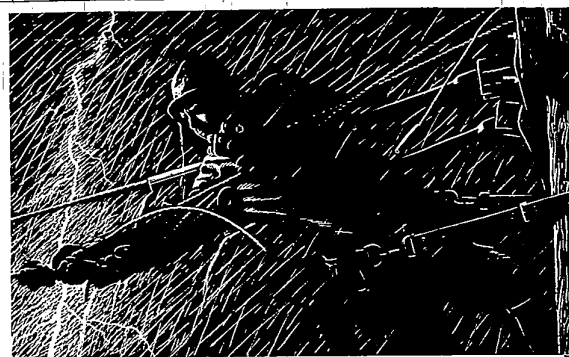
**\$2.50 gal.**  
FLAT WHITE  
STIPPLE

**\$2.95 gal.**  
SPECIAL

Red BARN PAINT

**\$2.00 gal.**  
BOYDELL and NU-ENAMEL

Store Hours — 9 a.m. to 8 p.m.  
**C. & H. Paint Store**  
33302 7 Mile at S. Farmington Road  
Phone Farmington 1284



## TAXI SERVICE

• Phone Farmington 1300 •

TIME CALLS TAKEN 48 HRS. IN ADVANCE

Courteous — Bonded

War II Veteran Drivers

**FARMINGTON LaSALLE CAB Co.**

33310 Grand River Ave.

## Get It Today!

AMAZING NEW

# WEED-NO-MORE

Magic Weed Killer

**ONLY \$1**

8-oz. Lawn size package treats 1500 sq. ft.  
Economy quart size \$2.98

**Everett Implement Co.**  
Grand River at Orchard Lake Rd. Phone 1515

## HOW'LL YOU HAVE YOUR EGGS?

This weather-beaten trouble-shooter isn't worrying about your eggs—or whether you want 'em soft boiled, fried, scrambled—or if you like eggs at all.

But he is worrying about keeping your electric service flowing along as usual. If that means eggs for your breakfast, okay then, that's why he's up on a storm-lashed power pole.

And, he'll stay there till he gets your line repaired—in spite of rain . . . lightning . . . thunder . . . and a high wind howling.

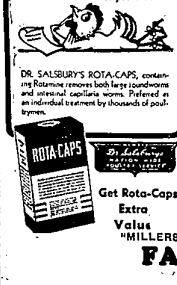
You don't have to send him a check for his trouble. You won't pay any more on your electric bill—to cover his hard, wet work and the materials he uses. Chances are you'll never even know a line went out.

Fortunately we don't have storms every day, but when we do, Detroit Edison line crews are ready—day or night.

**THE DETROIT EDISON COMPANY**

## SALSURY'S SAL

"Bard of the barnyard, that is, it is the ROYAL CAPS I still use. It's a product that needs no reference. It has the nation's vote of preference!"



How that Tattler Salsbury has been heartily discharged

**TAT ANT TRAPS**  
are again available to consumers with the most effective and efficient method of control. Each trap contains double bait to attract both sweet and greasy-eating ants. Will kill entire colony in few days. Sold on money-back guarantee, 25¢.

Order DELIGHT and LARRO Poultry Feed Now!

**FARMINGTON MILLS**  
Phone 0026