

We Are Headquarters For FLOUR - FEEDS - SEEDS

We are one of the largest millers and distributors of Flour, Feeds, Seeds and Poultry Supplies in this section of Michigan. Being Millers of many products we sell, we can sell them for less and save you money.

Our stocks of Farm Grass Seeds and Seed Grains are still complete but will not last long when seeding begins.

SPECIAL

Delight Chick Grower, \$4.80 - cwt.
Larro Chick Builder, \$5.40 - cwt.

HAY - STRAW - SERVALL - COB LITTER - SALTY
EGG CARTONS - FEEDERS - POULTRY & STOCK REMEDIES

We are Always in the Market for Grain

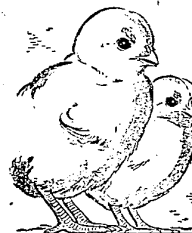
FARMINGTON MILLS

"Millers of Flour and Feed for Over 50 Years."

Phone 0026

for high
livability feed

Kellogg's
CHICK STARTER



Your baby chicks will have a lot better chance of living and growing into big, husky pullets if they get the right kind of feed. Start 'em on Kellogg's Chick Starter. Then you can be sure that they're getting the nutrients they need. For livability, for growth, for results, feed Kellogg's Chick Starter.



WE DELIVER

Phone Farmington 2273

DAVIS COUNTRY STORE

20330 South Farmington Road

**WEAR
SAVERS**



LENGTHEN THE LIFE AND USEFULNESS OF
YOUR FARM BUILDINGS WITH

**PONTIAC
PROTECTIVE
COATINGS**

FARM SERVICE SUPPLIES

High-Performance Poultry and Livestock Feeds

PHONE 0639

COR. ORCHARD LAKE AND 12 MILE ROADS
FARMINGTON, MICHIGAN

FARM FEATURES

Many See Rural Progress Caravan

Starting and finishing in blizzard-like snowstorms, the Michigan State college extension service Rural Progress Caravan has ended its 1947 tour.

J. G. Hays, manager of the caravan, said average attendance for the 54 shows was about 1,200. A total in excess of 64,000 visited the show.

The last four showings, scheduled in northeast Michigan, were cancelled because of the late March storm. Alpena, Lincoln, East Tawas and West Branch appearances were called off when road conditions prevented travel.

"We had fine attendance considering the weather," remarked Geo. Amundson, chairman of the caravan committee. "Last year our attendance ran a little higher, but we had almost perfect weather. Our 1947 attendance was outstanding when you consider that the state was covered with snow in all but about three weeks of the three months the show was out," he added.

Both Hays and Amundson remarked about the fine cooperation received from the county extension staffs and their local committees. Some outstanding examples of extension planning were demonstrated in many counties.

All specialists of the extension service who spent time with the Caravan this year agreed that farm people showed great interest in the lessons explained by the panels. Interest in remodeling and building by rural people was in evidence as they gathered about the models to learn new ideas.

GROWERS CO-OP TO HOLD ANNUAL MEETING APRIL 11

All members of the Southern Michigan Cooperative Growers Association are requested to attend the annual meeting, which will be held at the West Bloomfield Township Hall on Orchard Lake Road Friday, April 11, 1947 at 7:30 a.m. Business to be transacted will be election of three directors, annual reports, and whether the organization will join the Michigan Farm Labor Service.

CAP SMITH Auctioneer and Appraiser

SECURE YOUR DATES FOR
SPRING AUCTIONS
All Farm Sales Conducted On
A 3 Per Cent Basis

Res. New Hudson
Phone South Lyon 4365

Tractor-Mounted Brush Rake



Growers in the Grand Rapids area found that a tractor mounted brush rake will not only gather, transport and pack orchard brush for burning, but will do so in one-third the usual time.

Members of the Emergency Farm Labor program of the Michigan State college extension service report that successful brush rakes can be of three types: Front mounted non-lifting, or front or rear mounted with mechanical lifting device. Because of the teeth need to be much stronger and shorter than in the usual sweep rake. Eight-foot cedar posts of the usual three or four-inch size make cheap, replaceable teeth and allow the recommended six foot extension of tooth behind the cross member. A seven-foot total width and teeth spaced eighteen inches on centers seem to be standard measurements.

Highly important is the shape of the tooth at the pointed end. In order to get a buried tooth to run up out of the ground, a runner shape on the bottom and a slight tip at the extreme point end is desirable.

IMPROVE POTATO YIELD AND QUALITY WITH MORE SEED

Planting more seed to the acre is one way to improve quality and yield of potato crops, according to H. C. Moore, potato specialist at Michigan State college.

Twenty bushels or more of seed per acre is recommended to reduce over-size tubers and injuries from hollow heart and growth cracks. A majority of the growers in last year's 200 bushel club in Michigan planted 25 bushels or more seed per acre. They used large seed pieces weighing 1 1/2 to 2 ounces and spaced the hills 3 to 12 inches apart in the row.

Moore also recommends the use of certified seed. The seed should be planted in a deep, mellow soil that is well supplied with organic matter. A good alfalfa or clover sod, fitted to make a mellow seed bed, gives best results. A commercial 3-13-15 fertilizer applied at the rate of 750 pounds per acre was used last year by many of the record yield growers.

Certified seed which comes from vigorous, healthy fields, and is relatively free from disease, improves quality and increases yields. The varieties of certified seed that are available at this time include Russet Rural, Sebago, Monmonie, and Chippewa.

Growers should place their orders for certified seed as soon as possible since the supply is limited. The sources for certified seed can be obtained from the offices of county agricultural agents or from the Farm Crops department, Michigan State college, East Lansing.

County Extension Offices Move

Farmers and others desiring to call at the office of the Oakland County Extension Service will find this service in new quarters beginning this week, according to Karl D. Bailey, County Agricultural Agent. The office formerly located at 15 1/2 West Huron Street in one of the older county office buildings has now been transferred to the third floor of the Court House Annex No. 1, located at 1 Lafayette Street, 2 blocks north of the Court House. The Extension office is located on the 3rd floor of the building formerly known as the Masonic Temple where adequate office space has been arranged by the Oakland County Board of Auditors and the Building and Grounds Committee of the Board of Supervisors.

Mr. Bailey stated that he feels that the move is a good one since it will permit the office to give better service to farm people. Last year the office received 5,998 calls and 10,616 telephone calls concerned with farm and home improvement.

FRED GARLICK

GARAGE
General Auto
Repairing

26179 NOVI RD.
Novi, Michigan
Phone Northville 968-J4

Small Group Attends Farm Bureau Meeting

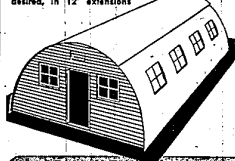
The Walled Lake Farm Bureau group held their last meeting at the home of Mrs. Della Matthews on Thirteen Mile Road. Owing to the bad roads and the prevalence of influenza, the meeting was the smallest since organization, only 17 members being present.

Discussion leader, Arthur Green was unable to attend, and the program was led by Mr. Lande, who led a most interesting discussion on the topic "What Benefits Do We Derive from our Farm Bureau?"

Jello, with several kinds of delicious home made cake, was served.

NEED A BUNKHOUSE OR WAREHOUSE?

20' wide...and as long as desired, in 12' extensions



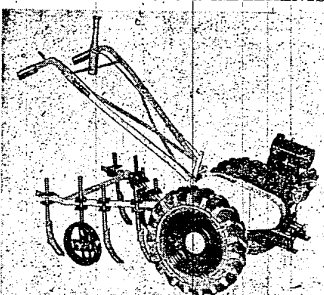
SEE THE QUONSET 20

BUILDER'S HEATING & SUPPLY CO.

(Formerly Wilson-Crisman Co.)
Local Representative...GORDON G. EVERETT
AT EVERETT IMPLEMENT CO., Phone 1515

"QUONSETS" ARE PRODUCTS OF GREAT LAKES STEEL CORPORATION

GARDENAID GARDEN TRACTORS & IMPLEMENTS



Plows - Harrows
Cultivators
Snow Plows
Graders
Available
For
Immediate
Delivery

Terms Available
RAU FEED CO.
33312 W. Seven Mile Rd.
at Farmington Rd.
Telephone Farm: 0671

Announces Details of \$20,000,000 Price Reductions

Details of the recently announced International Harvester policy of making price reductions to save users of our products approximately \$20,000,000 a year have now been worked out.

We have reduced prices on 163 models. These cover 12 basic models of farm tractors, 123 basic models of farm machines, 16 basic models of industrial tractors and engines, and 12 models of motor trucks, as well as certain motor truck attachments. The new lower prices are effective as of March 10, 1947.

These reductions were made not because of any decline in demand, but because we believe nothing is more important to this country than to lower the prices of the goods people buy.

While prices have not been changed on all products, we have made reductions wherever possible, in the amounts possible. Prices of many of our most popular products have been substantially lowered.

Altogether, more than half of the company's customers will be benefited by the reductions, which range from 1% to 38.8% and from \$2.50 to \$300 per item, based on list prices, F.O.B. Chicago.

Since the people have demanded that the government, withdraw from price control in peacetime, the responsibility to keep prices in check is back where it should be—in the hands of business and industry. The business outlook makes it possible for us to move toward the goal of lower prices, and we have felt a duty to act as promptly as possible.

Our ability to maintain these lower prices will depend on the supply and price of materials we buy from others and on uninterrupted production at reasonable wage levels.

The prices listed here carry out our announced policy that "Any price is too high if it can be reduced."

25 More Types of Products

Plows—52 models reduced from \$9.00 to \$20.00 (3% to 10.7%).
Cultivators—13 basic models reduced \$5.00 to \$10.00 (4.5% to 7.4%).
Listers and Molebreakers—7 models reduced \$5.00 in each case (2.8% to 4%).
Corn Planters—4 basic models reduced \$3.00 in each case (3% to 4.8%).
Grain Drills—11 models reduced \$14.25 to \$20.00 (4.4% to 6.9%).
Mowers—2 basic models reduced \$4.00 and \$11.50 (2.5% and 5%).
Sweep Rakes—1 model reduced \$5.00 (5.5%).
Pickup Hay Baler—1 model reduced \$75.00 (4.1%).
Self-Propelled Combines—1 basic model reduced \$122.50 (3.4%).

	FARM TRACTORS 12 Models Reduced \$10 to \$134 (up to 10.6%)
	MOTOR TRUCKS 12 Models Reduced \$50 to \$300 (1.9% to 3.6%)
	FARM MACHINES 123 Models Reduced \$2.50 to \$122.50 (1.9% to 23.8%)
	INDUSTRIAL TRACTORS (Crawler)—4 Models Reduced \$35 to \$50 (1.0% to 1.6%)

Endless Cutters—3 models reduced \$22.75 in each case (4.8% to 7.1%).
Endless Harvester—1 model reduced \$33.75 (3.9%).
Hammer Mills—2 models reduced \$5.00 in each case (1.9% and 3%).
Line Spreaders—1 basic model reduced \$2.50 (4.0%)
Power Lister—1 model reduced \$25.50 (3.9%).
Mower Spreaders—1 model reduced \$13.00 (3.5%).
Mixer Units—2 models reduced \$12.00 and \$17.00 (14.4% and 18.4%).
Mixer Vacuum Pumps—2 models reduced \$17.00 in each case (11.3% and 11.7%).
Portable Mixer Vacuum Pumps—2 models reduced \$17.00 in each case (11.3% and 11.7%).
Stainless Steel Milk Pails—2 models reduced \$5.00 and \$10.00 (18.5% and 23.8%).
Oyam Separators—4 models reduced \$18.25 in each case (3% to 10.4%).
Tractor Trailer—1 basic model reduced \$12.75 (5.5%).
Mix Cylinders—5 models reduced \$8.00 to \$18.00 (1.9% to 4.3%).
Industrial Tractors (Wheel)—4 basic models reduced \$19.00 to \$56.00 (1% to 3.4%).
Industrial Power Units—3 models reduced from \$10.00 to \$169.00 (3.3% to 11.4%).
Motor Truck Attachments—7 items reduced from \$6.25 to \$268.00, including a change in specifications on two items.

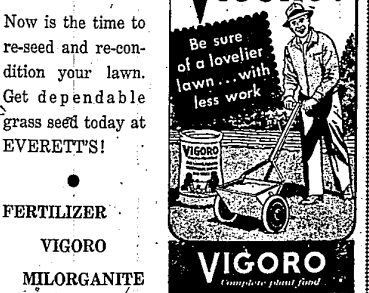
Any price is too high if it can be reduced

GARDEN NEEDS AND EQUIPMENT

Lawn Mowers
POWER AND HAND
Garden Tools

Grass Seed
Now is the time to re-seed and re-condition your lawn. Get dependable grass seed today at EVERETT'S!

FERTILIZER
VIGORO
MILORGANITE
Everett Implement Co.
Grand River at Orchard Lake Road Phone 1515



INTERNATIONAL HARVESTER